



### How do you provide 1,300 daily mosque visitors with a safe and comfortable surface in their ablation rooms?

Dubai's Easa Saleh Al Gurg mosque is one of the busiest in the city, with many of the 1,300 worshippers performing prayers five times a day. After bathing their hands and feet, worshippers walk barefoot to pray, often across a tiled floor, resulting in slippery and often uncomfortable surfaces.

#### The problem

In 2012, the Easa Saleh Al Gurg Mosque opened in Karama, a residential area in the centre of Dubai. The 1858 sq/m building is visited daily by 1,300 worshippers, many of whom perform the 'Wudu' five times a day. This ceremony involves washing the hands, face, head and feet in one of the mosque's three ablation rooms, before walking barefoot into the prayer area. This ritual often results in large amounts of water being spilled on the tiled floor, creating a slip hazard for worshippers and staff.

#### The checklist

- ✓ Quickly drains large volumes of water
- ✓ Provides both grip and comfort underfoot
- ✓ Light to handle for easy cleaning and maintenance
- ✓ Protects bare feet from bacterial contamination
- ✓ Can be loose laid over slippery surfaces

#### At a glance



##### Client

Easa Saleh Al Gurg Mosque

##### Brief

A comfortable, hygienic and slip resistant surface that can quickly drain large quantities of water in a busy mosque.

##### Location

Karama, Dubai

##### Environment

Barefoot

##### Industry

Leisure

##### Needs

Cushioning, drainage, slip resistance, spillage

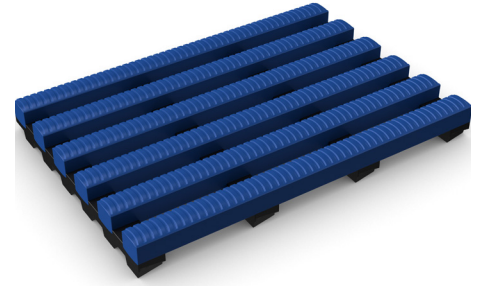
#### Plastex Matting Inc.

120 55th St NE  
Fort Payne, AL 35967  
+1 256 845 7725

USA + UK manufactured  
matting products:  
[plastexmatting.com](http://plastexmatting.com)

# Case Study

## Heronrib



### The solution

The mosque's large surface space called for a slip-resistant mat that could be quickly rolled out and relayed for easy maintenance and cleaning. A comfortable surface to stand and walk on was also imperative. With this in mind, the building material division at Intercare Ltd in Dubai recommended Heronrib to be laid in all wet areas of the mosque.

Specifically designed for wet areas with high barefoot traffic, Heronrib automatically self-drains – even when faced with the large amounts of water. The embossed surface delivers grip and comfort underfoot, while the antimicrobial and anti-fungal additives ensures excellent hygiene. Easy to handle, it can be cut to fit on site and quickly rolled up for cleaning and relaying.

“Due to the size and nature of the project, Heronrib matting, specified in three different colours, was the perfect solution to prevent slipping accidents in the ablution areas at one of the biggest mosques in Dubai.”

Biju Bhaskaran,  
Plastex's UAE distributor Intercare Ltd



### Product spotlight: Heronrib

Keep bathing and washing areas safe with Heronrib, the ultimate slip-resistant sports and leisure matting designed to withstand extensive barefoot traffic.

### Features:



Embossed surface



Two-layer construction and channelled underbars



Anti-microbial and anti-fungal additives



Made from flexible PVC



UV resistant

### Benefits:



Certified slip resistance  
(DIN 51097: C; ASTM 1677: 0.9/0.7)



Four-way drainage



Excellent hygiene, easy to clean



Easy to cut to fit; contours to uneven surfaces



Can be used indoor or outdoor