

Case Study

Crossgrip PVC



How do you help keep over 3000 shift workers on a fast moving production line safe from slips and free from fatigue?

When Jaguar Land Rover moved to a 24 hour production cycle, their foot traffic literally tripled overnight. It became clear that the car manufacturer needed a heavy duty matting solution that would ensure their workers' safety, as well as keep productivity levels high.

The problem

In 2012, Jaguar Land Rover experienced such a surge in popularity for their Evoque and Freelander models that it decided to move their Liverpool site to a 24 hour production cycle. This meant three shifts across the day instead of two, and a 30% increase in the site workforce. This rise in foot traffic on the production line meant Jaguar Land Rover quickly needed a slip-resistant and anti-fatigue mat that could be quickly installed along the entire length of a car production line.

The checklist

- ✓ Provides a slip-resistant surface
- ✓ Creates an anti-fatigue environment for the employees
- ✓ Quickly drains and dissipates production waste quickly and efficiently
- ✓ Easy to install, with minimal disruption to the 24-hour production cycle
- ✓ Lightweight and easily rolled up for cleaning and maintenance

At a glance

Client

Jaguar Land Rover

Brief

Heavy-duty, slip-resistant matting that could be quickly and seamlessly installed along the entire length of a car production line.

Location

Liverpool, UK

Environment

Workplace

Industry

Manufacturing

Needs

Anti-fatigue, heavy duty, slip resistance, surface protection



Plastic Extruders Ltd.

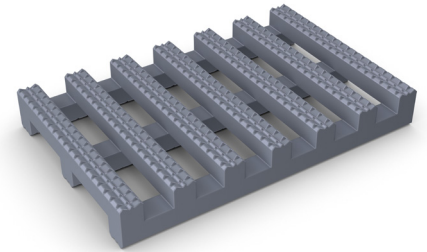
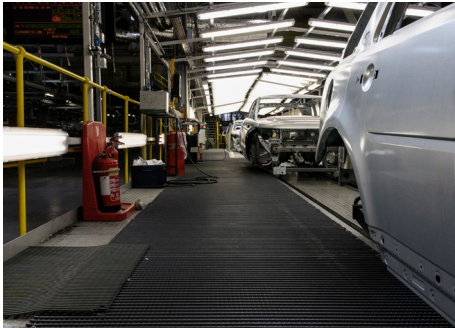
Russell Gardens, Wickford
Essex, SS11 8DN
+44 (0) 1268 571 116

UK + USA manufactured
matting products:
plastexmatting.com



Case Study

Crossgrip PVC



The solution

Minimal disruption to the 24 hour production cycle was of utmost importance, so it was vital that the matting be quick and easy to install. The obvious solution was Crossgrip PVC, our hardwearing walkway matting that's designed to be loose laid with no fixing required. Its one-piece construction means it can be quickly rolled out and to cut to fit on site, making it perfect for the plant's long production lines.

Made from flexible PVC, Crossgrip contours over uneven surfaces, including ramps and changes in level, while the diamond-cut pattern and cross-directional top ribs ensures a firm under foot grip. The matting's durable, two-layer construction also provides underfoot comfort for shift workers spending long hours on their feet.

"We knew we wanted Crossgrip as it's been more than successful in other areas around the site. It provides grip underfoot, is sturdy on the slopes and doesn't shift. The matting is also comfortable to stand on, which was an important consideration for our workers who can be standing for long periods of time."

Owen Doyle, managing director, Le Controls



Product spotlight: Crossgrip PVC

A highly specialised walkway matting perfect for heavy-duty industrial environments, Crossgrip PVC is certified slip resistant and delivers comfort underfoot.

Features:



Diamond cut pattern



Two-layer construction



Flexible, one-piece construction



Loose lay, no fixing required



Supplied in 10m rolls

Benefits:



Certified slip resistance
(DIN 51130: R10; ASTM 1677: 1.0/0.9)



Excellent drainage (DIN 51130: V10)



Contours to roof structure and protects the membrane



Stable in winds up to 60mph (96km/hr)



Quick to install