

April 2017

Multi-Purpose

FLOOR COVERINGS



www.plastexmatting.com

Plastic Extruders Ltd.



Our Mission *A Mat for All Reasons*

Our mission is to add to our distributors, and in turn their customers, profitability, safety, productivity and style by designing and manufacturing cutting edge matting for all work, education and leisure environments.

Our Values

Founded in 1962, Plastic Extruders Ltd (Plastex) are a second generation family run firm with long serving employees who take personal responsibility for maintaining the highest service standards and delivering the right solution on time and on budget.

Working with you to meet your needs

Through our design and innovation programme we work with our customers to constantly improve the form, function and cost effectiveness of our products.

So, though we have an extensive range suitable for most applications, we often fulfill individual customer needs by producing bespoke solutions. If you feel you may have one we would be pleased to hear from you. ☺



PETER O'SULLIVAN
Sales Director

DAVID O'SULLIVAN
Managing Director

Plastic Extruders Ltd UK & Plastex Matting Inc USA



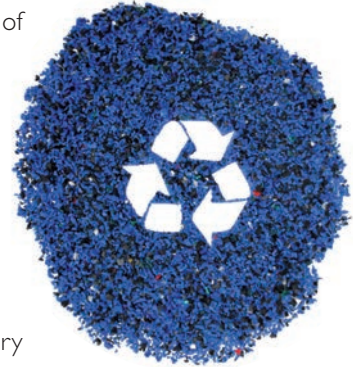
Follow Plastex Matting on:





Plastex *and the environment*

As a global supplier with manufacturing plants in the UK and the USA, we constantly seek to reduce the environmental impact of our manufacturing processes. For example, all our black matting is made with up to 100% post-industrial recycled material, but always with a minimum content of 30%.



To further minimise impact and avoid waste, we don't throw away any materials. All our factory trimmings and production process scrap are re-used in our own production. We do not re-sell any material to 3rd party reproprocessors.

In compliance with REACH regulation

The 2007 European Community REACH regulation (Registration, Evaluation, Authorisation and Restriction of Chemicals) gives manufacturers the responsibility of providing high level human and environmental protection from the use of chemicals in manufacturing.

Plastex does not use any substances currently included on the SVHC (Substances of Very High Concern) list under REACH, including "DEHP" Di(2-ethylhexyl) phthalate, also known as Di-octyl phthalate (DOP), plasticiser.

Further information can be found at www.plastexmatting.com.

Matting & flooring
manufactured in Europe
and the USA.

- Distributed worldwide



Ensure you have been supplied with a genuine Plastex product



To avoid plagiarism, today we emboss the trademarked names on the underside of our grid matting.

Testing and Measurement

In our constant pursuit of excellence, we subject our products to the rigors of scientific testing. This includes external testing through international bodies, but we don't stop there. If an external test doesn't exist, we will commission a University research project. Plastex continually strives to ensure we maintain the highest standards expected by our customers worldwide.

Plastex

Three levels of service

Once we've established your exact need, we'll recommend the product that is right for you, from our three levels of service.

General Purpose

We have an extensive range of general purpose matting designed for various environments. So whether you're looking for comfort, slip resistance, soil removal or increased hygiene, we will have the product for you.

Specialist

We have also built up a full range of products for demanding specialist environments such as light and heavy industrial, as well as food preparation both big and small.

Bespoke

If we can't exactly meet your needs from our current range, we will design and manufacture a mat specifically for you.

Whatever your requirements we will put all our knowledge and care into delivering exactly the mat you need, on time and on budget - 'A mat for all reasons'.

Why multi-purpose floor coverings?

When you need form and function for larger floor areas the Plastex Multi-Purpose range provides comfort, safety, style and cleanliness as well as protection for floor, bench and components.

2 formats - large one piece covering by standard rolls up to 1.5m (5') x 25m (82') or interlocking tiles.

How to choose your multi-purpose mat

Colour & Design

Often in larger areas colour is an important factor. After all floors usually make up the largest area of single colour in any interior design. Plastex has an extensive range of colours and patterns to choose from.

Surface pattern is important for several reasons...

Dot Pattern

As a rule of thumb the higher the dot the greater the grip, the smaller the dot the easier it is to clean and for small wheels and for small design perspective comes into play – big dots make rooms look smaller; small dots make rooms look bigger. We produce mats with three sizes from big to small - coin, button and dot.

DOT PATTERN						
PRODUCT	PAGE	DOT SIZE	COLOURS	THICKNESS	SPILLAGE	USAGE
Flexi Dot	6		2			Contemporary small dot pattern.
Flexi Dot Extra	6		2			Contemporary small dot pattern for heavier traffic areas.
Eco Dot	6		2			Contemporary small dot eco-friendly product.
Eco Dot Extra	6		2			Ecological pattern for heavier traffic areas.
Flexi Coin	7		1			Large stud vinyl alternative.
Eco Coin	7		2			Large stud vinyl eco-friendly product
Flexi Button	8		2			Heavy duty deep stud flooring.

Ridge Pattern

Striped surfaces provide a bit of extra comfort and can deal better with spillage. We have grooved stripe products for extra grip.

RIDGE PATTERN						
PRODUCT	PAGE	PATTERN SIZE	COLOURS	THICKNESS	SPILLAGE	USAGE
Flexi Tred	9		4			Heavy duty ribbed matting suitable for use where electrical safety is required.
Flexi Line	10		3			Fine ribbed matting designed for areas alongside or on top of benches.
Flexi Ridge	11		2			Hard wearing ribbed matting with high component and noise protection.

Open Grid Pattern

For areas with the likelihood of heavy spillage our Plastex Grid and Plastex Lok products provide comfort and support for both chemical and non-chemical environments.

GRID PATTERN						
PRODUCT	PAGE	GRID	COLOURS	THICKNESS	SPILLAGE	USAGE
Plastex Grid	14	Open	5	25mm (1")		Heavy duty rigid grid tiling for where large volumes of liquid require efficient dispersal.
Plastex Grid	14	Closed	2	25mm (1")		Heavy duty rigid grid solid surface tiling for coverage of large areas.
Plastex Lok	13	Open	1	16mm (5/8")		Heavy duty open grid 100% recycled PVC tiles.
Plastex Chex	12	Closed	1	14mm (4/9")		Heavy duty solid surface 100% recycled PVC tiles.

Durability

The thicker the mat the longer it wears - so take the amount of traffic into account. Of course the thicker mats also provide more protection for floors, benches and components.

Environment

All the above products are 100% recyclable and made from 100% DINP (REACH compliant) PVC, including recycled versions ("Eco" products, Plastex Lok and Plastex Chex).

DIVERSITY, FUNCTION



A N D P R O T E C T I O N



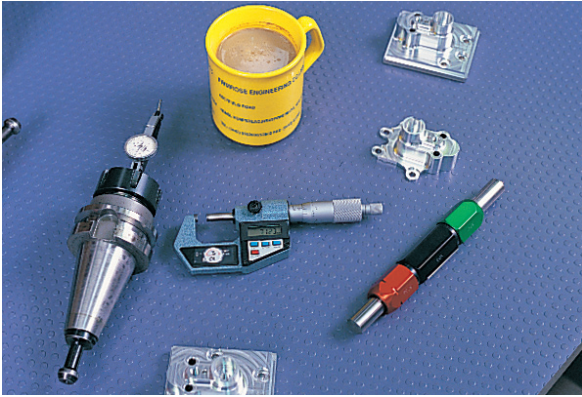
A L L R E A S O N S

FLEXI DOT

Contemporary small dot pattern

A light duty, attractive vinyl in a choice of colours with a dot pattern as a main feature.

More than just attractive, but also highly functional, Flexi Dot performs well and the roll format enables large area coverage with a minimum of seams/joints.



BENEFITS

- Good slip resistance
- Chemical, oil and acid resistant
- Easy to cut on site, contours to uneven surfaces
- Quick to install
- Environmentally-friendly
- Fire resistant

FEATURES

- Dot pattern surface
- Vinyl sheets in roll format
- Made from flexible PVC
- Supplied in convenient roll formats
- 'Eco' version manufactured from reprocessed factory waste
- EN 13501 - 1 : 2007- Bfl - S1

Eco Dot

Providing an eco-friendly and economical alternative, Eco Dot is manufactured to the same specification but using recycled factory materials only.

Flexi Dot Extra & Eco Dot Extra

Thicker 2.5mm (3/32") versions for heavier traffic areas.

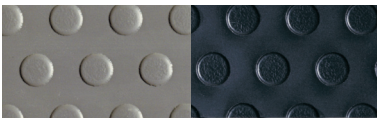
STANDARD COLOURS

FLEXI DOT



RED BLUE

ECO DOT



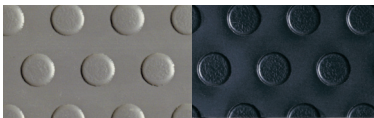
DARK GREY BLACK

FLEXI DOT EXTRA



RED BLUE

ECO DOT EXTRA



DARK GREY BLACK

STANDARD SIZES

PRODUCT	HEIGHT	STANDARD ROLL OPTION
Flexi Dot	1.6mm (1/16")	25 x 0.98m (82' x 3'2")
Eco Dot	1.6mm (1/16")	25 x 0.98m (82' x 3'2")

PRODUCT	HEIGHT	STANDARD ROLL OPTION
Flexi Dot Extra	2.5mm (3/32")	20 x 0.98m (65' 7" x 3'2")
Eco Dot Extra	2.5mm (3/32")	20 x 0.98m (65' 7" x 3'2")

FLEXI COIN

The large stud vinyl alternative

Attractive large stud vinyl floor covering also available in 'eco' version.

Large areas can be covered economically using just one piece of material in 98cm (3'2") or 150cm (5') widths. This multi-purpose product is a high quality alternative to conventional floorings in many light duty applications.



BENEFITS

- Good slip resistance
- Chemical, oil and acid resistant
- Easy to cut on site, contours to uneven surfaces
- Quick to install
- Environmentally-friendly
- Fire resistant

FEATURES

- Large stud design
- Vinyl sheets in roll format
- Made from flexible PVC
- Supplied in convenient roll formats
- 'Eco' version manufactured from reprocessed factory waste
- EN 13501 - 1 : 2007- Bfl - S1

Eco Coin

The eco-friendly and more economical version of Flexi Coin manufactured from 100% recyclable factory waste.

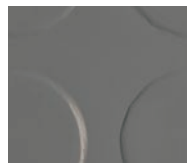
STANDARD COLOURS

FLEXI COIN

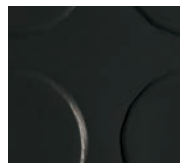


BLUE

ECO COIN



DARK GREY



BLACK

STANDARD SIZES

PRODUCT	HEIGHT	STANDARD ROLL OPTIONS	
Flexi Coin	1.6mm (1/16")	25 x 0.98m (82' x 3'2")	25 x 1.5m (82' x 5')
Eco Coin	1.6mm (1/16")	25 x 0.98m (82' x 3'2")	25 x 1.5m (82' x 5')

FLEXI BUTTON

Heavy duty deep stud floor covering

A multi-purpose, heavy duty sheet vinyl for commercial and medium duty industrial applications.

The distinctive deep stud design is not only an attractive feature but also a practical one. Flexi Button is easy to clean, slip resistant, chemical, oil and acid resistant and formulated to cope with light spillages.



BENEFITS

- Good slip resistance and hardwearing
- Chemical, oil and acid resistant
- Easy to cut on site, contours to uneven surfaces
- Quick to install
- Fire resistant

FEATURES

- Deep stud design
- Vinyl sheets in roll format
- Made from flexible PVC
- Supplied in convenient roll formats
- EN 13501 - 1 : 2007- Bfl - S1

STANDARD COLOURS



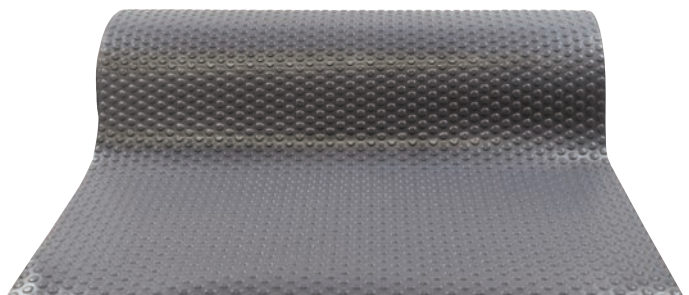
BLUE

DARK GREY

BLACK

STANDARD SIZES

PRODUCT	HEIGHT	STANDARD ROLL OPTION
Flexi Button	3.3mm (1/8")	20 x 0.98m (65' 7" x 3' 2")



FLEXI TRED

Heavy duty ribbed matting

Providing electrical resistance and enhanced safety for demanding applications.

A durable, chemical resistant sheet vinyl with a textured broad rib surface for enhanced safety. Flexi Tred insulates from the dangers of electric shock and meets DIN/EN 60243-1 with a breakdown voltage of 27kV.



BENEFITS

- Good slip and wear resistance
- Insulates from electric shock
- Chemical, oil and acid resistant
- Easy to cut on site, contours to uneven surfaces
- Quick to install
- Fire resistant

FEATURES

- Textured broad rib surface
- Breakdown voltage of 27kV
- Vinyl sheets in roll format
- Made from flexible PVC
- Supplied in convenient roll formats
- EN 13501 - 1 : 2007- Cfl - S1

STANDARD COLOURS



BLUE



BROWN



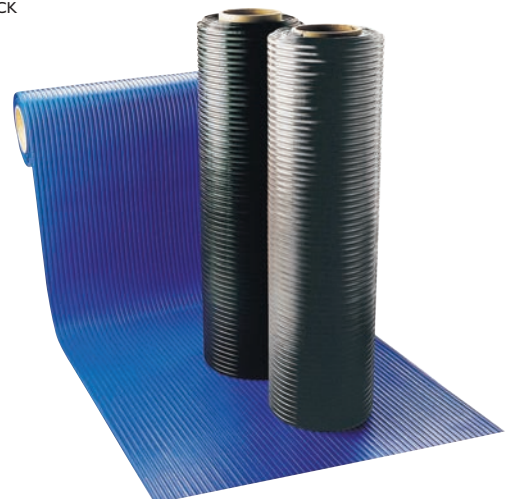
LIGHT GREY



BLACK

STANDARD SIZES

PRODUCT	HEIGHT	STANDARD ROLL OPTION
Flexi Tred	4.0 (5/32")	10 x 1 (33' x 3'3")



Fine ribbed matting

Fluted surface resists oils, chemicals and acids.

The practical alternative to conventional rubber runners, Flexi Line is a fine ribbed vinyl matting designed for areas alongside or on top of benches. Flexi Line has a slip resistant fluted surface and dense composition to reduce the impact of noise and/or vibration.



BENEFITS

- Good slip resistance
- Chemical, oil and acid resistant
- Easy to cut on site, contours to uneven surfaces
- Quick to install
- Fire resistant

FEATURES

- Fine ribbed surface
- Vinyl sheets in roll format
- Made from flexible PVC
- Supplied in convenient roll formats
- EN 13501 - 1 : 2007- Bfl - S1

STANDARD COLOURS



RED



LIGHT GREY



BLACK

STANDARD SIZES

PRODUCT	HEIGHT	STANDARD ROLL OPTION
Flexi Line	2mm (5/64")	25 x 1m (82' x 3'3")



FLEXI RIDGE

Hard wearing ribbed matting

For component protection and dispersion of light spillages.

Scuff resistant flooring or bench top matting with high component and noise protection featuring easy to clean ridges to enhance resilience and disperse light spillages, in a one piece homogenous roll.



BENEFITS

- Good slip and wear resistance
- Chemical, oil and acid resistant
- Easy to cut on site, contours to uneven surfaces
- Quick to install
- Fire resistant

FEATURES

- Ribbed surface
- Vinyl sheets in roll format
- Made from flexible PVC
- Supplied in convenient roll formats
- EN 13501 - 1 : 2007- Bfl - S1

STANDARD COLOURS



GREEN



DARK GREY



STANDARD SIZES

PRODUCT	HEIGHT	STANDARD ROLL OPTION
Flexi Ridge	2.8mm (7/16")	20 x 1m (65'7" x 3'3")

PLASTEX CHEX

100% recycled heavy duty checker plate PVC tiles

Plastex Chex is a hard wearing tiling system, delivering long life and value for money.

It can be used as a temporary or permanent flooring solution for coverage of large areas in the workplace, such as work stations, finishing/assembly areas, laboratories, localised workcells and machine shops.

Plastex Chex solid surface absorbs shock and noise as well as being resistant to chemicals and extreme temperatures.



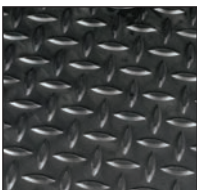
BENEFITS

- Slip resistant and hard wearing
- Insulating and chemical, oil and acid resistant
- Quick to install
- Environmentally-friendly
- REACH compliant
- Finished areas

FEATURES

- Checker plate surface
- Non-porous PVC (impermeable to fluids)
- Interlocking jigsaw tiles
- Made from 100% recycled material
- Made with certified recycled material
- PVC ramped edging

STANDARD COLOUR



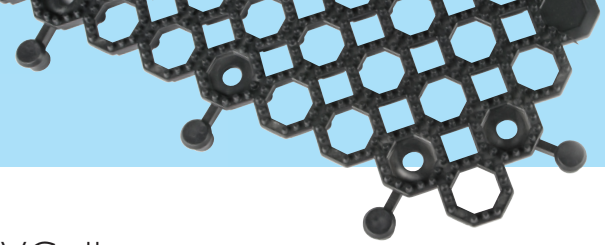
BLACK

STANDARD SIZES

PRODUCT	HEIGHT	STANDARD TILE SIZE
Plastex Chex	14mm (9/16")	0.5 x 0.5m (1'8" x 1'8")

Available in packs of 16 tiles





100% recycled heavy duty open grid PVC tiles

Plastex Lok is a hard wearing open grid tiling system, delivering long life and value for money.

It can be used as a temporary or permanent flooring solution for coverage of large areas in the workplace with the likelihood of heavy spillage, such as work stations, finishing/assembly areas, laboratories, localised work cells and machine shops.

Plastex Lok's pimpled open grid surface guarantees excellent slip resistance (DIN 51130 R12) and, at the same time, facilitates drainage (DIN 51130 V10) and soil removal.



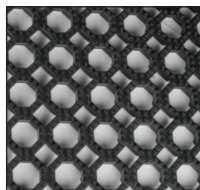
BENEFITS

- Certified slip resistance **DIN 51130:R12**
- Excellent drainage **DIN 51130:V10**
- Chemical, oil and acid resistant
- Quick to install
- Environmentally-friendly
- Easy to cut on site, contours to uneven surfaces
- Finished areas

FEATURES

- Pimpled surface
- Raised construction
- Non-porous PVC (impermeable to fluids)
- Interlocking tiles
- Made from 100% recycled material
- Made from flexible PVC
- PVC ramped edging

STANDARD COLOUR



BLACK



STANDARD SIZES

PRODUCT	HEIGHT	STANDARD TILE SIZE
Plastex Lok	16mm (5/8")	0.5 x 0.5m (1'8" x 1'8")

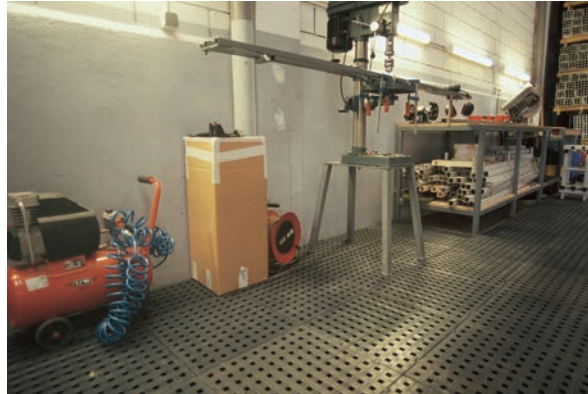
Available in packs of 16 tiles

PLASTEX GRID

Heavy duty rigid grid tiling

A versatile flooring solution in multiple industrial applications.

Rigid polyethylene grid tiles with a secure, quick and easy 'lock-fit' connection, Plastex Grid provides a raised floor surface standing 25mm (1") above ground.



BENEFITS

- Open grid or solid grid design
- Good slip resistance
- Resistant to detergents, industrial chemicals and acids
- 25mm (1") high surface
- Effective coverage of large areas

FEATURES

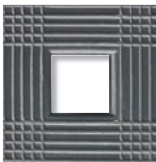
- Open grid for removal of large volumes of liquid
- Textured surface
- Made from rigid polyethylene
- Withstands weights of up to 50T/m²
- Secure 'lock fit' connection

STANDARD COLOURS

PLASTEX GRID OPEN



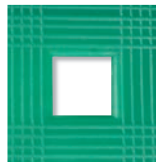
RED



DARK GREY



BLUE

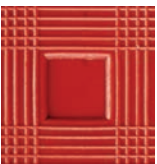


GREEN



WHITE

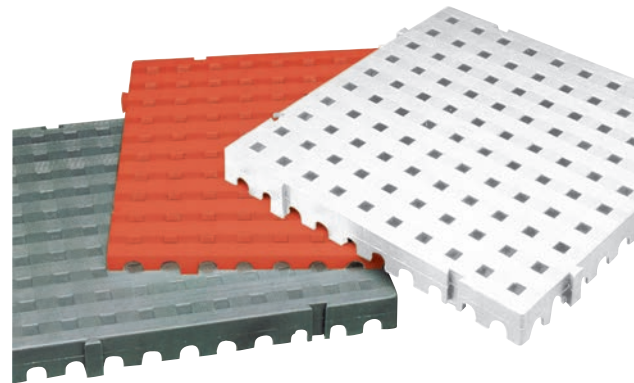
PLASTEX GRID CLOSED



RED

STANDARD SIZES

PRODUCT	HEIGHT	STANDARD TILE SIZE	WEIGHT
Plastex Grid Open	25mm (1")	50 x 50cm (1'8" x 1'8")	3.6 kg/m ² (0.66 lbs/sft)
Plastex Grid Closed	25mm (1")	50 x 50cm (1'8" x 1'8")	4.4 kg/m ² (0.80 lbs/sft)



Matting and tiling floor covering applications & ancillaries

One Piece Covering

If you have a large floor area and are looking for a one-piece covering or runner, look no further than our multi-purpose flooring range.

We can manufacture a standard width roll to any length you specify.

The only thing to bear in mind, when it comes to fitting for larger areas, is that weight may be an issue; for example a 30m (100') roll of FlexiTred weighs about 125kilos (275lbs).



Loose Lay or fixed

Plastex multi-purpose flooring also offers you the versatility of choosing between loose lay or permanent fixing. Loose lay is the perfect instant solution to dirty or unfinished floors.

For the longer-term, our range of colours and surface patterns allows you to include our multi-purpose matting as fixed design feature.

You'll find the matting can be easily cut and shaped on site, and once stuck down, is an elegant and long lasting design solution.



Plastex Grid



25mm x 66mm x 2m
(1" x 2 3/4" x 6'6")

66mm Aluminium strip

Supplied in sections of 2m (6'6") length with fixing screws and plugs

Colour: Anodised Aluminium

Plastex Lok



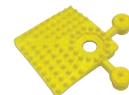
12mm x 50mm x 500mm
(1/2" x 2" x 1'8")

50mm PVC edging strip

Male and female strips available.

Supplied in 50cm lengths (1'8").

Colours: Black, Yellow

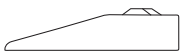


12mm x 50mm x 50mm
(1/2" x 2" x 2")

50mm PVC edge corner

Colours: Black, Yellow

Plastex Chex



12mm x 50mm x 500mm
(1/2" x 2" x 1'8")

50mm PVC edging strip

Supplied in 50cm (1'8") lengths.

Colours: Black, Yellow



Connector clips - end to end

For joining two ends of the edging together. One lug is supplied for every two pieces of edging in the relevant colour.

Colours: Black, Yellow

We make our matting, and that makes all the difference

When you buy Plastex matting you're also buying our extensive know-how that comes from over 45 years of designing, testing and manufacturing matting solutions for a diverse range of applications; knowledge we apply to make sure we find exactly the right solution for you.

This is important as an incorrectly specified product may actually increase risk. For example using a mat designed for bare feet in a workplace area could potentially increase slip accidents. That's why simply picking a product from a web page may not deliver the correct solution.

Talk to Us

To make sure you get the right mat for the right reasons, talk to us and our distributors.



The 45+ products within the Plastex range of matting and flooring offer **"a mat for all reasons"**.

To make it easier for you to choose the right mat for the right reason, we've divided our range into the sections below. Simply pick the section that best suits your need, and then use the segmentation chart you'll find at the front of each section to help you make your final choice.



Multi-Purpose FLOOR COVERINGS

Product Index	
Eco Coin	7
Eco Dot	6
Eco Dot Extra	6
Flexi Button	8
Flexi Coin	7
Flexi Dot	6
Flexi Dot Extra	6
Flexi Line	10
Flexi Ridge	11
Flexi Tred	9
Plastex Chex	12
Plastex Grid	14
Plastex Lok	13

Full Manufacturer
Warranty - Another good
reason to choose Plastex

All Plastex flooring and matting products will give excellent and long service. In the unlikely event that a Plastex product has a defect in workmanship, we offer a full refund or replacement warranty. The warranty periods vary depending on the product, you can find full terms and details at

www.plastexmatting.com/warranty.pdf



www.plastexmatting.com

Plastic Extruders Ltd.

Russell Gardens, Wickford,
Essex SS11 8DN, England

Tel: +44 (0) 1268 571116

Plastex Matting, Inc.

120 55th Street NE
Fort Payne, AL 35967 USA

Tel: +1 256 845 7725

