



Plastex

Matting for All Reasons

CI/SIB reference	
(43)	Tn6
(47)	Tn6
(71.3)	T
JULY	2017



Workplace Slip Resistant Matting



Workplace Anti-Fatigue Matting



Barefoot and Wetside Matting



Entrance Matting Systems



Multi-Purpose Floor Coverings



Specialist Application Matting



Plastic Extruders Ltd.



Our Mission *A Mat for All Reasons*

Our mission is to add to our distributors, and in turn their customers, profitability, safety, productivity and style by designing and manufacturing cutting edge matting for all work, education and leisure environments.

Our Values

Founded in 1962, Plastic Extruders Ltd (Plastex) are a second generation family run firm with long serving employees who take personal responsibility for maintaining the highest service standards and delivering the right solution on time and on budget.

Working with you to meet your needs

“ Through our design and innovation program we work with our customers to constantly improve the form, function and cost effectiveness of our products.

Even though we have an extensive range suitable for most applications, we often fulfill individual customer needs by producing custom solutions. If you feel you may have one we would be pleased to hear from you. ”



PETER O'SULLIVAN
Sales Director

DAVID O'SULLIVAN
Managing Director

Plastic Extruders Ltd UK & Plastex Matting Inc USA



Follow Plastex Matting on:

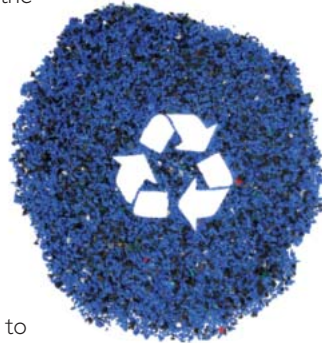




Plastex *and the environment*

As a global supplier with manufacturing plants in the UK and the USA, we constantly seek to reduce the environmental impact of our manufacturing processes. For example, all our black matting is made with up to 100% post-industrial recycled material, but always with a minimum content of 30%.

To further minimize impact and avoid waste, we don't throw away any materials. All our factory trimmings and production process scrap are re-used in our own production. We do not re-sell any material to 3rd party reprocessors.



In compliance with REACH regulation

The 2007 European Community REACH regulation (Registration, Evaluation, Authorization and Restriction of Chemicals) gives manufacturers the responsibility of providing high level human and environmental protection from the use of chemicals in manufacturing.

Plastex does not use any substances currently included on the SVHC (Substances of Very High Concern) list under REACH, including "DEHP" Di(2-ethylhexyl) phthalate, also known as Dioctyl phthalate (DOP), plasticizer.

In compliance with Proposition 65

Plastex conforms with The State of California Safe Drinking Water and Toxic Enforcement Act of 1986, also known as Proposition 65 (Prop 65).

Further information can be found at www.plastexmatting.com.

Matting & flooring manufactured
in Europe and the USA.
- Distributed worldwide



We make our matting, and that makes all the difference

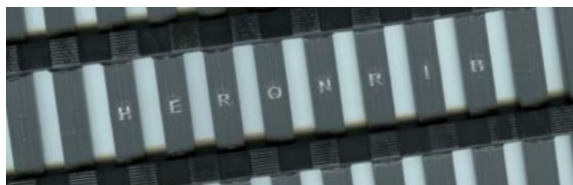
When you purchase Plastex matting you're also investing in our extensive know-how that comes from over 55 years of designing, testing and manufacturing matting solutions for a diverse range of applications; knowledge we apply to make sure we find exactly the right solution for you.

This is important as an incorrectly specified product may actually increase risk. For example using a mat designed for bare feet in a workplace area could potentially increase slip accidents.

Talk to Us

To make sure you get the right mat for the right reasons, talk to us and our distributors.

Ensure you have been supplied
with a genuine Plastex product



To avoid plagiarism, today we emboss the trademarked names on the underside of our grid matting.

Testing
and Measurement

In our constant pursuit of excellence, we subject our products to the rigors of scientific testing. This includes external testing through international bodies, but we don't stop there. If an external test doesn't exist, we will commission a University research project. Plastex continually strives to ensure we maintain the highest standards expected by our customers worldwide.

Plastex

Three levels of service

Once we've established your exact need, we'll recommend the product that is right for you, from our three levels of service.

General Purpose

We have an extensive range of general purpose matting designed for various environments. So whether you're looking for comfort, slip resistance, soil removal or increased hygiene, we will have the product for you.

Specialist

We have also built up a full range of products for demanding specialist environments such as light and heavy industrial, as well as food preparation both big and small.

Customization

If we can't exactly meet your needs from our current range, we will design and manufacture a mat specifically for you.

Whatever your requirements we will put all our knowledge and care into delivering exactly the mat you need, on time and on budget - "A mat for all reasons".

To make it easier for you to choose the right mat for the right reason, we have divided our range into the sections below.

The image displays seven overlapping product catalog covers, each representing a different category of matting. The covers are arranged in a fan-like pattern, showing their titles and key features. To the right of each cover is a corresponding colored box with the category name and page range.

- Workplace Slip Resistant Matting (4-19):** Green cover featuring a worker in a blue uniform.
- Workplace Anti-Fatigue Matting (20-31):** Orange cover featuring a worker in a white lab coat.
- Barefoot and Wetside Safety Matting (32-41):** Blue cover featuring a person sitting on a mat.
- Frontrunner Entrance Flooring Systems (42-61):** Grey cover featuring a person in a black dress.
- Multi-Purpose Floor Coverings (62-75):** Purple cover featuring a person in a white lab coat.
- Specialist Application Matting (76-84):** Olive green cover featuring a person in a white lab coat.

Simply pick the heading that best suits your need, and then use the segmentation chart found at the front of each section to help you make your final product choice.



Workplace

SLIP RESISTANT MATTING

◆ Introduction	5
◆ International Applications	6
◆ Vynagrip	8
◆ Vynagrip Plus	9
◆ Vynagrip Modules	10
◆ Heronair	11
◆ Floorline	12
◆ Herongripa	13
◆ Flexigrid	14
◆ Firmagrip	15
◆ Plastex Chex	16
◆ Plastex Lok	17
◆ Track Grip	18
◆ Ancillaries	19



www.plastexmatting.com

Why Slip Resistant Matting?

Professional Retail Store Maintenance reports that more than 1 million people suffer an injury from a slip, trip or fall in the U.S. each year and that slips, trips and falls account for 15 to 20% of all workers compensation costs. These statistics are consistent in most markets globally confirming slips, trips and falls being a major workplace hazard.

Our slip resistant matting products are specifically designed to:

- **Improve safety underfoot**
- **Reduce slip, trip and fall accidents**
- **Remove spillages and debris from the working area**
- **Thermal and acoustical enhancement**

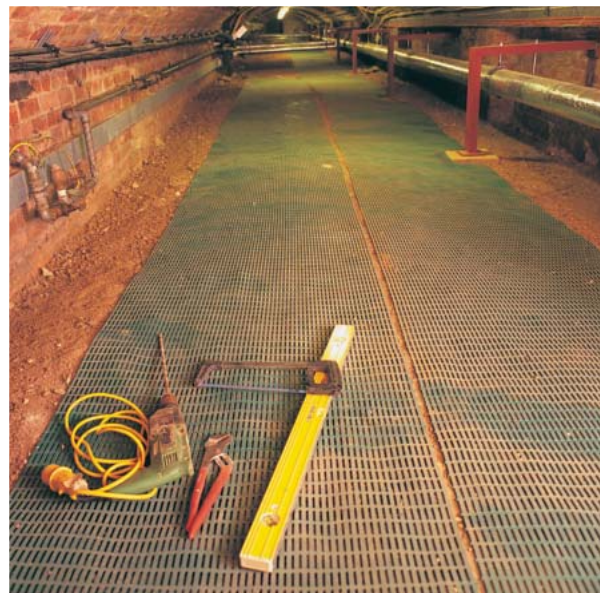
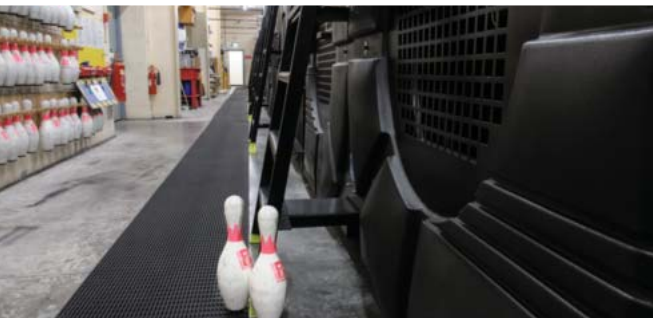
Plastex slip resistant matting range features a combination of PVC construction, etched or cut surfaces for improved slip resistance, animal fat and oil resistant properties, 100% recycled PVC products and many more...

Which Plastex product is right for you?

The chart below will help you choose the right mat for the right reasons, but if you have any questions contact us - we'll be delighted to help.

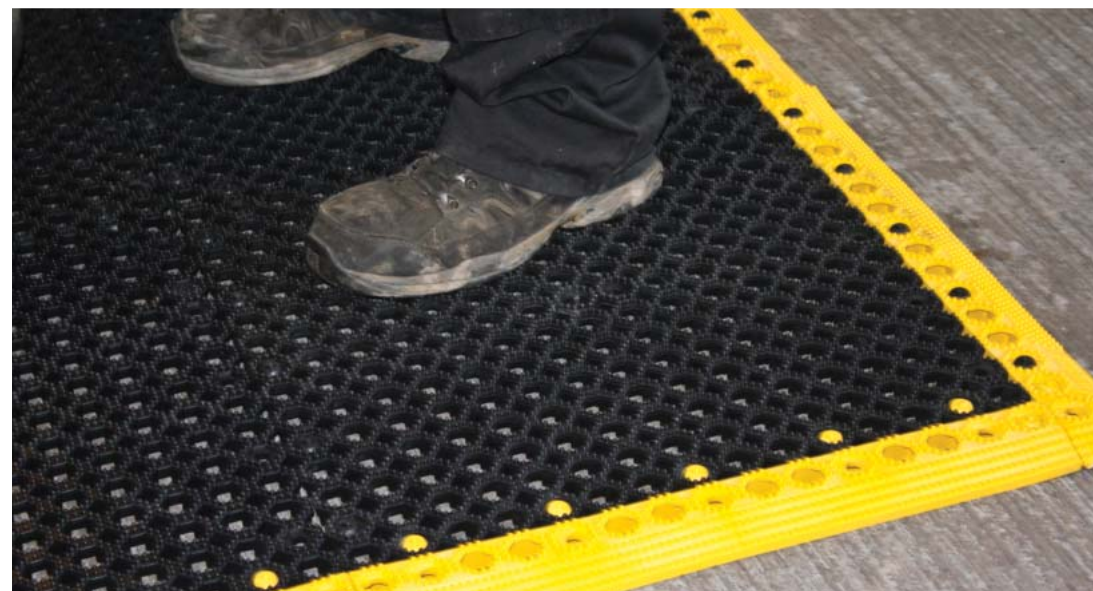
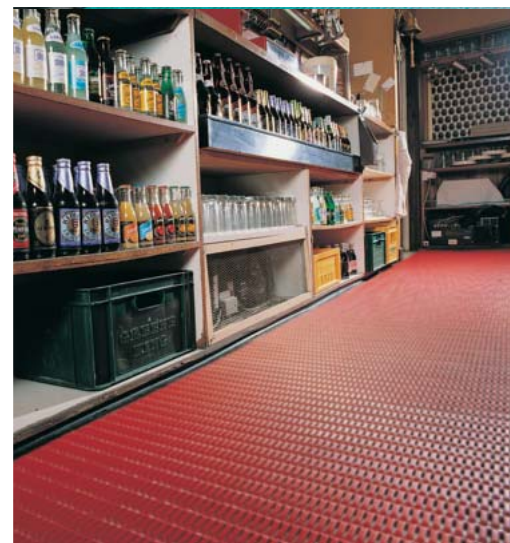
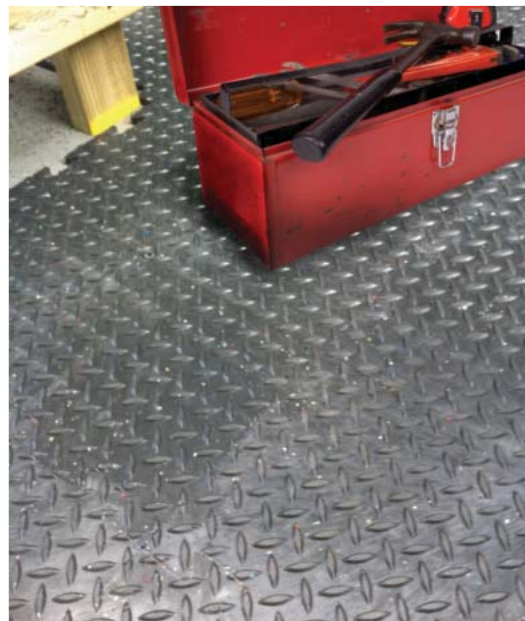
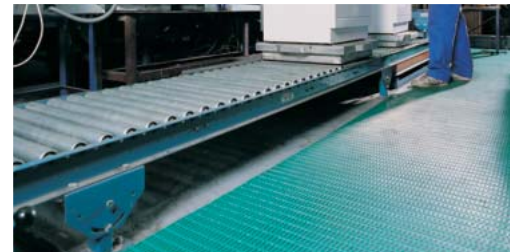
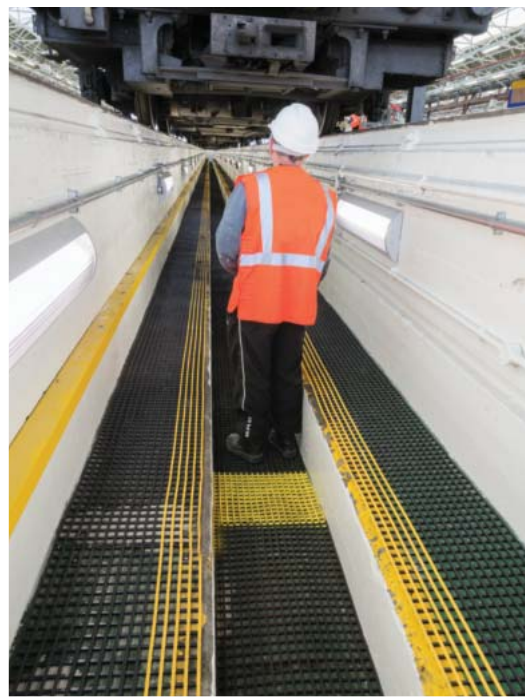
PRODUCT	SLIP RESISTANCE	WEAR	COMFORT	DRAINAGE/ SPILLAGE	SITUATION	USAGE
GENERAL PURPOSE						
Vynagrip Vynagrip Plus Vynagrip Modules p. 8-10						Hard wearing, heavy usage, long term.
Heronair p. 11						Cushions against breakages, good general purpose.
Floorline p. 12						Ideal for light usage and cushioning.
Plastex Chex p. 16						For coverage of large areas.
Plastex Lok p. 17						For coverage of large areas with likelihood of spillage.
Trackgrip p. 18						Hard wearing, large debris, long term.
WORKSHOP / TOOL ROOM						
Flexigrid p. 14						Larger components, debris, filings and heavy spillage.
Firmagrip p. 15						Close spaced grid, smaller components and wheeled traffic.
FOOD PROCESSING / KITCHENS						
Herongripa p. 13						Large format grid ideal for food processing environments.

INSIDE OR OUT,



A MAT FOR

CLEAN OR NOT



ALL REASONS

VYNAGRIP

The ultimate slip resistant matting solution

Automatic drainage combined with an extra aggressive diamond tread surface for increased slip resistance make Vynagrip especially effective wherever oil, water, liquid and debris spillages are likely.

Increase safety, comfort and productivity in the workplace with Vynagrip. Vynagrip offers a slip resistant, anti-fatigue matting solution which can be relied upon to perform in wide ranging heavy duty commercial and industrial applications.

Vynagrip is made from 2 layers of non-porous, flexible PVC welded together to create extra strong joints. It is available in rolls or modules with accessories to suit all needs (see page 19).



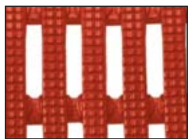
BENEFITS

- Certified slip resistance **DIN 51130:RII - ASTM 1677: 1.0/0.9**
- Excellent drainage **DIN 51130:V10**
- Chemical, oil and acid resistant
- Environmentally-friendly
- Easy to cut on site, contours to uneven surfaces
- Quick to install
- Boost productivity
- Fire resistant

FEATURES

- Diamond cut pattern
- Two layer construction
- Non-porous PVC (impermeable to fluids)
- Black Vynagrip: 100% recycled material
- Made from flexible PVC
- Supplied in 33' (10m) rolls or ramped modules
- Proven and tested anti-fatigue properties
- Certified **EN 13501: Cf - S1**

STANDARD COLORS



RED*



BLUE



BLACK

* Red color is not colorfast in direct sunlight.

BLACK VYNAGRIP

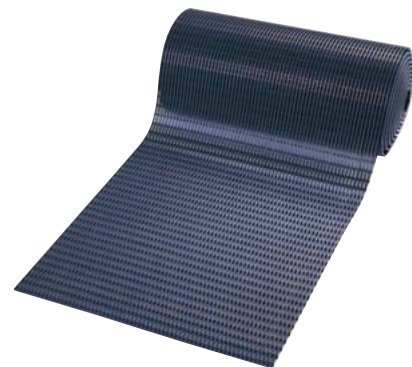
An environmentally-friendly product made from 100% recycled material.

Other Vynagrip colors available on request.

STANDARD SIZES

PRODUCT	HEIGHT	STANDARD ROLL OPTIONS**		
Vynagrip	5/8" (15mm)	2' x 33' (0.6 x 10m)	3' x 33' (0.91 x 10m)	4' x 33' (1.22 x 10m)

**Contact us for custom dimensions.



VYNAGRIP PLUS

A slip resistant matting with yellow edge

A hard wearing PVC grid matting to mark routes and delineate areas.

With the same specifications as Vynagrip, a slip resistant, anti-fatigue matting solution which can be relied upon to perform in wide ranging heavy duty commercial and industrial applications, Vynagrip Plus matting has yellow edges for extra safety and demarcation.

The matting is made from 2 layers of non-porous, flexible PVC welded together to create extra strong joints. It is available in rolls with accessories to suit all needs.



BENEFITS

- Certified slip resistance **DIN 51130:R11 - ASTM 1677: 1.0/0.9**
- Excellent drainage **DIN 51130:V10**
- Marks routes and delineates areas
- Chemical, oil and acid resistant
- Easy to cut on site, contours to uneven surfaces
- Quick to install
- Boost productivity
- Fire resistant

FEATURES

- Diamond cut pattern
- Two layer construction
- Yellow edge running length of mat
- Non-porous PVC (impermeable to fluids)
- Made from flexible PVC
- Supplied in 33' (10m) rolls
- Proven and tested anti-fatigue properties
- Certified **EN 13501: Cf - S1**

STANDARD COLOR

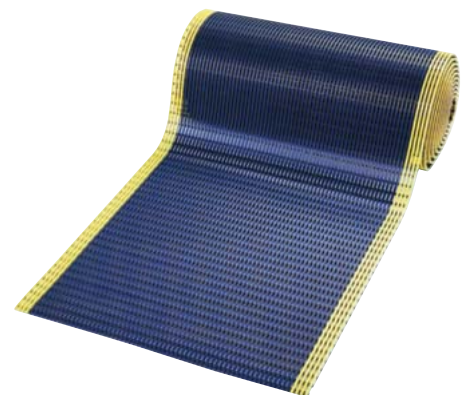


WITH YELLOW EDGE

STANDARD SIZES

PRODUCT	HEIGHT	STANDARD ROLL OPTIONS*		
Vynagrip Plus	5/8" (15mm)	2' x 33' (0.6 x 10m)	3' x 33' (0.91 x 10m)	4' x 33' (1.22 x 10m)

*Contact us for custom dimensions.



VYNAGRIP MODULES

Reducing slips and standing fatigue at work

Hard wearing PVC grid matting modules providing comfort and slip resistance.

Vynagrip matting is also available in standard size modules with fitted edging on 3 sides to identify work areas, prevent hazards and fit snugly against work stations.

Vynagrip is made from 2 layers of non-porous, flexible PVC that are welded together to create extra strong joints. Its diamond tread surface and proven anti-fatigue properties make it one of the most suited mats for reducing standing fatigue, while improving comfort in work environments.



BENEFITS

- Certified slip resistance **DIN 51130:R11 - ASTM 1677: 1.0/0.9**
- Excellent drainage **DIN 51130:V10**
- Chemical, oil and acid resistant
- Contours to uneven surfaces
- Fits snugly against work surfaces
- Boost productivity
- Fire resistant
- Quick to install

FEATURES

- Diamond cut pattern
- Two layer construction
- Non-porous PVC (impermeable to fluids)
- Made from flexible PVC
- Supplied with fitted edging on 3 sides
- Proven anti-fatigue properties
- Certified **EN 13501: Cf1 - S1**
- 2 standard sizes with factory fitted edging

STANDARD COLORS



BLACK with GRAY edging



BLACK with YELLOW edging

Other colors available on request.

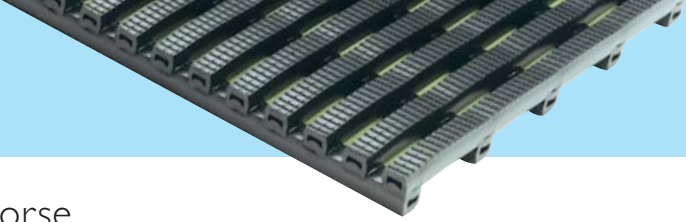
STANDARD MODULE SIZES

PRODUCT	HEIGHT	STANDARD MODULE OPTIONS*	
Vynagrip Modules	5/8" (15mm)	2'5" x 4" (0.8 x 1.2m)	3'3" x 5" (1 x 1.5m)

* Supplied with factory fitted edging on 3 sides.



HERONAIR



A hardwearing and versatile work horse

Heronair is an economical, tubular constructed matting for general purpose applications that provides excellent slip resistance and insulation.

Heronair's hollow construction uses less material, so it is also light to move and easy to lift for cleaning purposes.

It is especially effective wherever there is a risk of water and spillages underfoot as it is also highly slip resistant (R11 under DIN 51130 testing).



BENEFITS

Certified slip resistance **DIN 51130: R11 - ASTM 1677: 0.6/0.6**

Excellent drainage **DIN 51130: V10**

Fatigue-reducing and insulating

Chemical, oil and acid resistant

Easy to cut on site, contours to uneven surfaces

Quick to install

Fire resistant

Environmentally-friendly

FEATURES

Etched pattern

Two layer construction

Hollow construction

Non-porous PVC

Made from flexible PVC

Supplied in 33' (10m) rolls

Certified **EN 13501: Cfl - S1**

Made from 100% recycled material

STANDARD COLOR



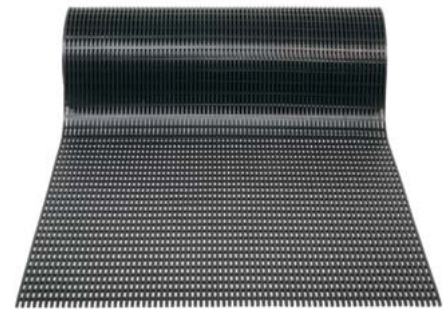
BLACK

Other colors available on request.

STANDARD SIZES

PRODUCT	HEIGHT	STANDARD ROLL OPTIONS*		
Heronair	3/8" (10mm)	2' x 33' (0.6 x 10m)	3' x 33' (0.91 x 10m)	4' x 33' (1.22 x 10m)

*Contact us for custom dimensions.



FLOORLINE

Light, economical and comfortable

Economical and multi-purpose, Floorline matting has wide ranging uses in light industrial and commercial applications where an attractive, slip resistant and cushioned matting is required.

The cushioning effect of Floorline reduces the risk of damage to items that are accidentally dropped while its open grid format dissipates spillages and permits easy drainage.

This effective combination makes Floorline a popular matting for clubs, restaurants, bars and hospitality areas where staff have to stand, spills are likely and breakages possible.



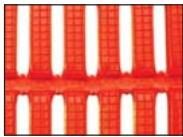
BENEFITS

- Certified slip resistance **DIN 51130: R11 & C** **ASTM 1677: 1.0/0.8**
- Excellent drainage **DIN 51130: V10**
- Easy to clean
- Easy to cut on site, contours to uneven surfaces
- Quick to install
- UV resistant
- Fire resistant
- Enhanced branding or styling

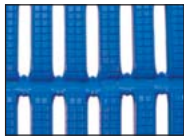
FEATURES

- Etched pattern
- Open grid construction
- Non-porous PVC (impermeable to fluids)
- Made from flexible PVC
- Supplied in 33' (10m) rolls
- Can be used indoor or outdoor*
- Certified **EN 13501: Cf1 - S1**
- 5 standard colors

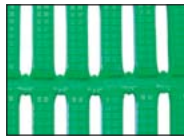
STANDARD COLORS



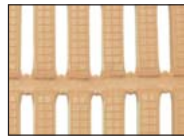
RED*



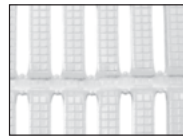
BLUE



GREEN



BEIGE



WHITE

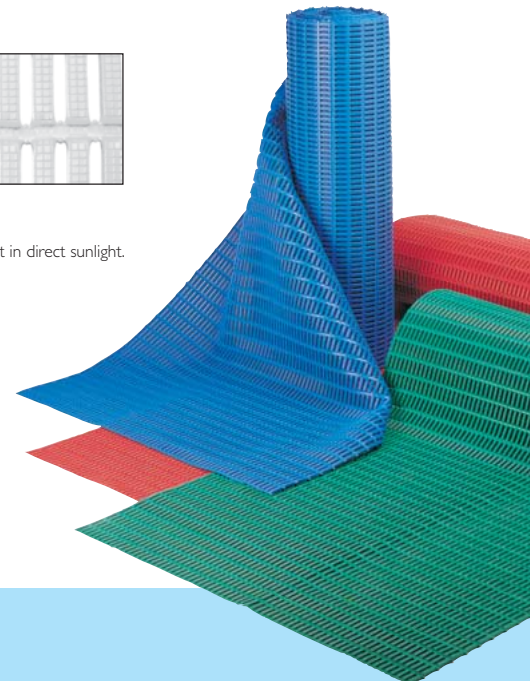
Other colors available on request.

* Red color is not colorfast in direct sunlight.

STANDARD SIZES

PRODUCT	HEIGHT	STANDARD ROLL OPTIONS**	
Floorline	1/4" (6mm)	2' x 33' (0.6 x 10m)	3' x 33' (0.91 x 10m)

**Contact us for custom dimensions.



HERONGRIPA

Vinyl matting resistant to animal fat and oils

Developed primarily for the food processing and preparation industries, Herongripa is a specialized matting system that is animal fat resistant.

The wide spaced open grid format allows waste and spillages to fall through, keeping the standing area free of slippery and potentially hazardous matter. The one piece hardwearing vinyl roll format allows for ease of rolling up during cleaning routines.



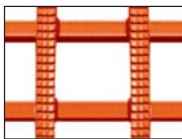
BENEFITS

- Certified slip resistance **DIN 51130: R11** **ASTM 1677: 0.8/0.7**
- Excellent drainage **DIN 51130: V10**
- Durable vinyl for food processing areas
- Chemical, oil and acid resistant
- One piece covering
- Continuous hygiene
- Efficiently removes spillages

FEATURES

- Diamond cut pattern
- Two layer construction
- Animal fat resistant DINP plasticized PVC
- Non-porous PVC (impermeable to fluids)
- Supplied in 33' (10m) rolls
- Anti-fungal and anti-bacterial additives
- Large open grid format

STANDARD COLOR

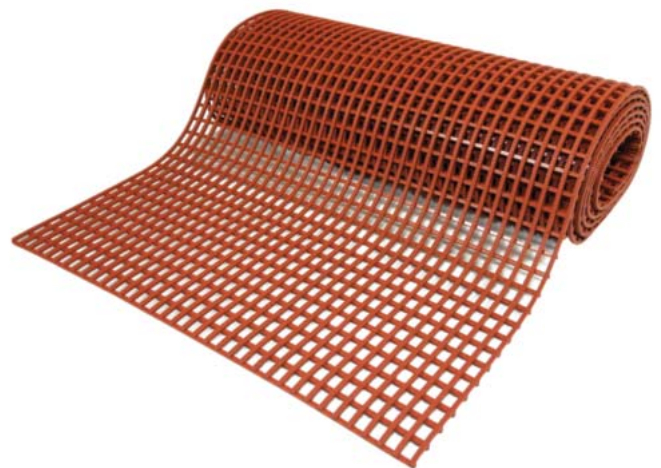


TERRACOTTA

STANDARD SIZES

PRODUCT	HEIGHT	STANDARD ROLL OPTIONS*		
Herongripa	5/8" (15mm)	2' x 33' (0.6 x 10m)	3' x 33' (0.91 x 10m)	4' x 33' (1.22 x 10m)

*Contact us for custom dimensions.



FLEXIGRID

Tough at work, gentle on the environment

For the toughest industrial applications where high levels of liquids and debris are generated by manufacturing and production processes.

Combining higher elevation with an open grid and an aggressive grip surface, Flexigrid delivers slip resistance and drainage where spillage, debris and standing water or liquids are an issue.



BENEFITS

- Certified slip resistance **DIN 51130: R11 - ASTM 1677: 0.6/0.5**
- Excellent drainage **DIN 51130: V10**
- Chemical, oil and acid resistant
- Easy to cut on site, contours to uneven surfaces
- Quick to install
- Boost productivity
- Environmentally friendly
- Fire resistant

FEATURES

- Diamond tread surface
- Two layer construction
- Non-porous PVC (impermeable to fluids)
- Made from flexible PVC
- Supplied in 33' (10m) rolls
- Proven anti-fatigue properties
- Made from 100% recycled material
- Certified **EN 13501: Cfl - S1**

STANDARD COLOR



BLACK

STANDARD SIZES

PRODUCT	HEIGHT	STANDARD ROLL OPTIONS*		STANDARD MODULE OPTIONS*	
Flexigrid	3/4" (20mm)	2' x 16'6" (0.6 x 5m)	3' x 16'6" (0.91 x 5m)	2' x 6' (0.6 x 1.8m)	3' x 6' (0.91 x 1.8m)
Flexigrid	3/4" (20mm)	2' x 33' (0.6 x 10m)	3' x 33' (0.91 x 10m)		

*Contact us for custom dimensions.

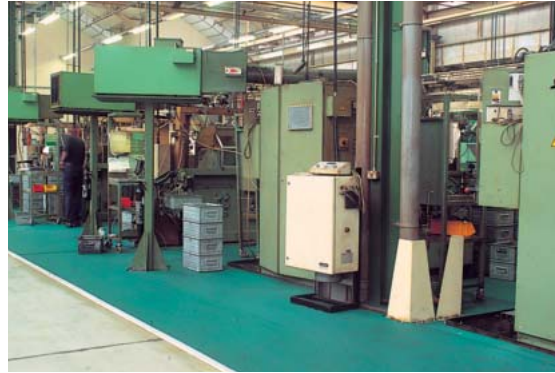


F I R M A G R I P

Close mesh matting for small wheeled traffic

For busy industrial areas where hand trucks and small-wheeled vehicles are in use and liquids may be liable to be spilled.

Firmagrip is a quality close mesh matting, dense enough to prevent smaller components falling through, yet effective at drainage, it carries the highest certification. Add to that excellent slip resistance and you've got a quality matting solution.



BENEFITS

- Certified slip resistance **DIN 51130:R11**
- Excellent drainage **DIN 51130:V10**
- Ideal for small wheeled traffic
- Chemical, oil and acid resistant
- Easy to cut on site, contours to uneven surfaces
- Quick to install
- Fire resistant
- Enhanced branding or styling

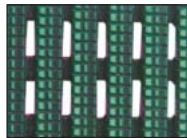
FEATURES

- Diamond cut pattern
- Two layer construction
- Close mesh construction
- Non-porous PVC (impermeable to fluids)
- Made from flexible PVC
- Supplied in 33' (10m) rolls
- Certified **EN 13501: Cfl - S1**
- 3 standard colors

STANDARD COLORS



RED*



GREEN



BLACK

Other colors available on request.

* Red color is not colorfast in direct sunlight.

STANDARD SIZES

PRODUCT	HEIGHT	STANDARD ROLL OPTIONS**		
Firmagrip	9/16" (14mm)	2' x 33' (0.6 x 10m)	3' x 33' (0.91 x 10m)	4' x 33' (1.22 x 10m)

**Contact us for custom dimensions.



PLASTEX CHEX

100% recycled heavy duty checker plate PVC tiles

Plastex Chex is a hard wearing tiling system, delivering long life and value for investment.

It can be used as a temporary or permanent flooring solution for coverage of large areas in the workplace, such as work stations, finishing/assembly areas, laboratories, localized workcells and storage areas.



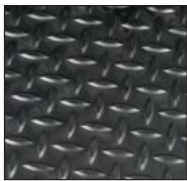
BENEFITS

- Slip resistant and hard wearing
- Insulating and chemical, oil and acid resistant
- Quick to install
- Environmentally-friendly
- REACH compliant
- Finished areas

FEATURES

- Checker plate surface
- Non-porous PVC (impermeable to fluids)
- Interlocking jigsaw tiles
- Made from 100% recycled material
- Made with certified recycled material
- PVC ramped edging

STANDARD COLOR



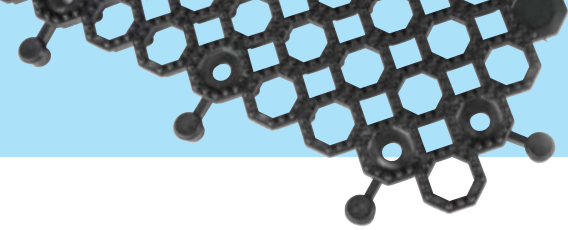
BLACK



STANDARD SIZES

PRODUCT	HEIGHT	STANDARD TILE SIZE
Plastex Chex	9/16" (14mm)	1'8" x 1'8" (0.5 x 0.5m)

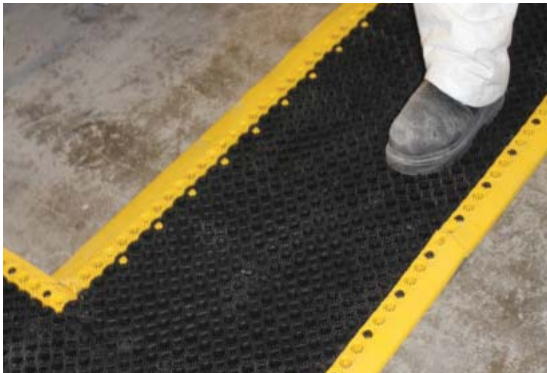
Available in packs of 16 tiles



100% recycled heavy duty open grid PVC tiles

Plastex Lok is a hard wearing open grid tiling system, delivering long life and value for investment.

It can be used as a temporary or permanent flooring solution for coverage of large areas in the workplace with the likelihood of heavy spillage, such as work stations, finishing/assembly areas, laboratories, localized work cells and machine shops.



BENEFITS

- Certified slip resistance **DIN 51130:R12**
- Excellent drainage **DIN 51130:V10**
- Chemical, oil and acid resistant
- Quick to install
- Environmentally-friendly
- Easy to cut on site, contours to uneven surfaces
- Finished areas

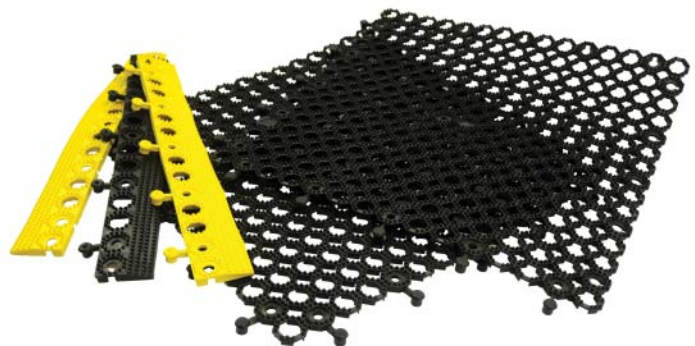
FEATURES

- Pimpled surface
- Raised construction
- Non-porous PVC (impermeable to fluids)
- Interlocking tiles
- Made from 100% recycled material
- Made from flexible PVC
- PVC ramped edging

STANDARD COLOR



BLACK



STANDARD SIZES

PRODUCT	HEIGHT	STANDARD TILE SIZE
Plastex Lok	5/8" (16mm)	1'8" x 1'8" (0.5 x 0.5m)

Available in packs of 16 tiles

TRACKGRIP

Wide space open grid slip resistant matting

For greasy and grimy environments.

This highly slip resistant matting is very effective wherever oils or greasy materials are spilled. A wide grid design allows for better drainage and fall through, keeping the surface free from potentially dangerous slip hazards. Trackgrip was developed for railway maintenance areas but is highly effective in most greasy and grimy environments.



BENEFITS

- Certified slip resistance **DIN 51130: R11** **ASTM 1677: 0.9/0.7**
- Excellent drainage
- Chemical, oil and acid resistant
- Easy to clean with a high pressure hose
- Quick to install
- Fire resistant

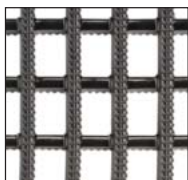
FEATURES

- Diamond cut pattern
- Two layer construction and extra wide spacing
- Non-porous PVC (impermeable to fluids)
- Made from flexible PVC
- Supplied in 33' (10m) rolls
- Certified **EN 13501: Cf1 - S1**

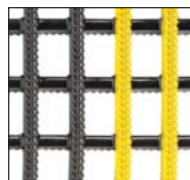
Trackgrip Plus

Trackgrip with the additional benefit of yellow edge to mark routes and delineate areas.

STANDARD COLOR



BLACK



BLACK with YELLOW EDGING



STANDARD SIZES

PRODUCT	HEIGHT	STANDARD ROLL OPTIONS*		
Trackgrip	5/8" (15mm)	2' x 33' (0.6 x 10m)	3' x 33' (0.91 x 10m)	4' x 33' (1.22 x 10m)
Trackgrip Plus	5/8" (15mm)	2' x 33' (0.6 x 10m)	3' x 33' (0.91 x 10m)	4' x 33' (1.22 x 10m)

*Contact us for custom dimensions.

Ancillaries for Workplace slip resistant products

Firmagrip



9/16" x 2 1/2" x 33'
(14mm x 60mm x 10.1m)

2 1/2" PVC edging strip

Supplied in rolls of 33' (10.1m) length with cold welding paste.

Colors: Black, Dark Gray



9/16" x 3 3/4" x 33'
(14mm x 100mm x 10.1m)

3 3/4" PVC edging strip

Supplied in rolls of 33' (10.1m) length with cold welding paste.

Colors: Black, Dark Gray, Yellow

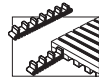


5/8" x 1 13/16" x 6'6"
(15mm x 45mm x 2m)

Aluminum edging strip

Supplied in sections of 6'6" (2m) length with fixing screws and plugs.

Color: Anodized Aluminum



Connector clips - side to side

For joining sections of matting together side to side. Supplied in packs of 10.



9/16" x 8'2"
(14mm x 2.5m)

Snap Track

2 part snap track can be welded to join rolls end to end or side to side for large area covering. Supplied with cold welding paste.

Color: Dark Gray

Herongrip & Trackgrip



9/16" x 2 1/2" x 33'
(14mm x 60mm x 10.1m)

2 1/2" PVC edging strip

Supplied in rolls of 33' (10.1m) length with cold welding paste.

Colors: Black, Dark Gray



9/16" x 3 3/4" x 33'
(14mm x 100mm x 10.1m)

3 3/4" PVC edging strip

Supplied in rolls of 33' (10.1m) length with cold welding paste.

Colors: Black, Dark Gray, Yellow

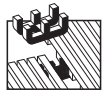


5/8" x 1 13/16" x 6'6"
(15mm x 45mm x 2m)

Aluminum edging strip

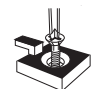
Supplied in sections of 6'6" (2m) length with fixing screws and plugs.

Color: Anodized Aluminum



Connector clips - dual purpose

For joining sections of matting together side to side or end to end. Supplied in packs of 10.



Small floor hook

For securing sections of matting to floor. Supplied in packs of 10 with screws and plugs.

Heronair

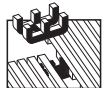


3/8" x 2" x 33'
(10mm x 50mm x 10.1m)

2" PVC edging strip

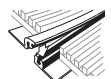
Supplied in rolls of 33' (10.1m) length with cold welding paste.

Colors: Black, Dark Gray



Connector clips - dual purpose

For joining sections of matting together side to side or end to end. Supplied in packs of 10.



13/32" x 5'11"
(10.5mm x 1.8m)

Snap Track - Low Profile

2 part snap track can be welded to join rolls end to end or side to side for large area covering.

Supplied with cold welding paste.

Color: Dark Gray

Flexigrid



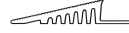
7/8" x 2 3/16" x 6'6"
(22mm x 50mm x 2m)

Aluminum edging strip

Supplied in sections of 6'6" (2m) length with fixing screws and plugs.

Color: Anodized Aluminum

Vynagrip & Vynagrip Plus



9/16" x 2 1/2" x 33'
(14mm x 60mm x 10.1m)

2 1/2" PVC edging strip

Supplied in rolls of 33' (10.1m) length with cold welding paste.

Colors: Black, Dark Gray



9/16" x 3 3/4" x 33'
(14mm x 100mm x 10.1m)

3 3/4" PVC edging strip

Supplied in rolls of 33' (10.1m) length with cold welding paste.

Colors: Black, Dark Gray, Yellow

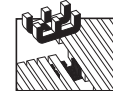


5/8" x 1 13/16" x 6'6"
(15mm x 45mm x 2m)

Aluminum edging strip

Supplied in sections of 6'6" (2m) length with fixing screws and plugs.

Color: Anodized Aluminum



Connector clips - dual purpose

For joining sections of matting together side to side or end to end. Supplied in packs of 10.



Connector clips - side to end

For joining sections of matting together side to end. Supplied in packs of 10.



9/16" x 8'2"
(14mm x 2.5m)

Snap Track

2 part snap track can be welded to join rolls end to end or side to side for large area covering.

Supplied with cold welding paste.

Color: Dark Gray



Small floor hook

For securing sections of matting to floor. Supplied in packs of 10 with screws and plugs.



Large floor hook

For securing sections of matting to floor. Supplied in packs of 10 with screws and plugs.

Plastex Chex



1/2" x 2" x 1'8"
(12mm x 50mm x 500mm)

2" PVC edging strip

Supplied in 1'8" (50cm) lengths.

Colors: Black, Yellow

Plastex Lok



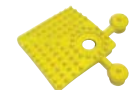
1/2" x 2" x 1'8"
(12mm x 50mm x 500mm)

2" PVC edging strip

Male and female strips available.

Supplied in 1'8" (50cm) lengths.

Colors: Black, Yellow



2" PVC edge corner

Colors: Black, Yellow

1/2" x 2" x 2"
(12mm x 50mm x 50mm)

Connector clips - end to end

For joining two ends of the edging together. One lug is supplied for every two pieces of edging in the relevant color.

Colors: Black, Yellow





Workplace

ANTI-FATIGUE MATTING

◆ Introduction	21
◆ Why is Anti-fatigue Important?	22
◆ Tuff Spun	23
◆ Tuff Spun Wear	24
◆ Tuff Spun Deck	25
◆ Zed Land	26
◆ Zed Tred	27
◆ Zed Chex	28
◆ Sparksafe	29
◆ Heronair	30
◆ Ancillaries	31



www.plastexmatting.com

Why anti-fatigue matting?

Prolonged standing at work is the most common cause for work-related discomfort. Statistics confirm fatigue and resultant productivity reductions are a major workplace problem. Employers who provide high quality underfoot comfort will:

- **Improve concentration**
- **Decrease risk of circulatory problems**
- **Improve productivity**
- **Decrease injury risk**

The patented foam used in Zed Land, Zed Tred and Zed Chex provides excellent standing fatigue reduction, hard wearing and continued resilience long after less expensive foam matting will have deadened.

Which Plastex product is right for you?

The chart below will help you choose the right mat for the right reasons, but if you have any questions contact us - we'll be delighted to help.

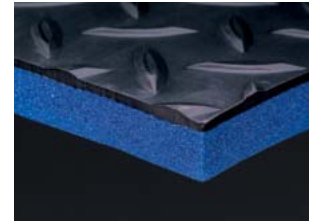
PRODUCT	SLIP RESISTANCE	WEAR	BOUNCE/FATIGUE REDUCTION	DRAINAGE/ SPILLAGE	SITUATION	USAGE
GENERAL PURPOSE - Suitable for most dry applications						
Tuff Spun p. 23				Dry only		The best budget anti-fatigue matting available with yellow edging for safety.
Tuff Spun Wear p. 24				Dry only		Added wear layer offers extra comfort and improved durability.
Tuff Spun Deck p. 25				Dry only		Checker plate foam for added traction and puncture resistance.
Zed Land p. 26				Dry only		The ultimate high bounce, long lasting general purpose anti-fatigue mat.
HEAVY DUTY - Strengthened with extra thermally bonded surface matting						
Zed Tred p. 27						Copes with light spillage and debris.
Zed Chex p. 28						Industry standard pattern - available in black.
FOR WHEN THE HEAT IS ON						
Sparksafe p. 29				Dry only		Industrial work and welding stations, repels sparks and hot metal shards.
GENERAL PURPOSE - Suitable for most wet applications						
Heronair p. 30						Cushions against breakages, good general purpose.

Why is anti-fatigue matting important?

Apart from the need for comfort and grip, standing relatively still at a work station can cause circulatory problems leading to increased fatigue, which may result in accidents and/or decreased productivity.

How Plastex anti-fatigue matting works

With its bonded combination of a durable surface and foam backing, Plastex anti-fatigue matting is the ideal mix of safety and comfort. The surface patterns provide varying degrees of grip and drainage to cover the full range of needs from light duty, to heavy industrial use. As well as insulating and softening cold hard floors, the foam backing encourages micro muscle movements that improve blood flow, preventing fatigue and potential long term health issues.



For large and small floor areas

Our matting is available in module and roll format enabling versatile usage:

- Large floor areas
- Runners alongside work stations
- Single modular mats for individual work stations.

For more complex areas, the matting is easy to cut to shape and install.



Runner alongside work station



Work station module mat

Edging Options

Standard length rolls and modules of foam or foam/wear layer combination are supplied with integral edging on all 4 sides.



Integral Edging



PVC Edging



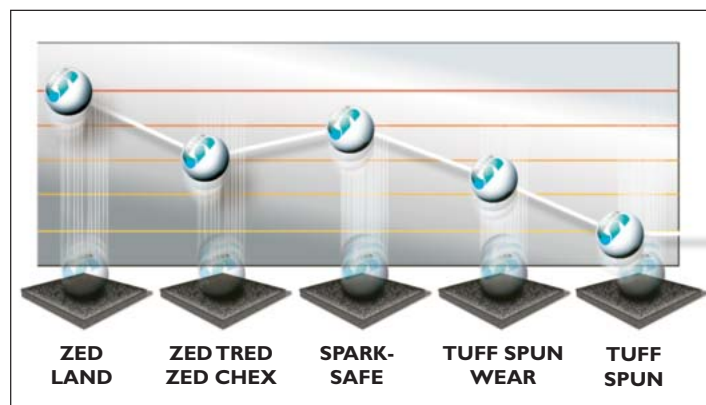
Field Edging

Foam only products (Tuff Spun, Tuff Spun Wear, Tuff Spun Deck and Zed Land) if cut on site and used as part rolls, require PVC edging strips (3/8" or 9/16" heights) to achieve an edging on cut ends.

Dual layer products (Sparksafe, Zed Tred and Zed Chex) if cut on site and used as part rolls, require a field edge to be fabricated. Simply cut back and remove the underside foam, so that the top wear layer creates a sloped finish.

The golf ball bounce test

For a low tech version of our bounce test simply hold a golf ball about 1' or so above one of our anti-fatigue mats and let go - the higher the bounce the more resilience and comfort the mat will provide.



TUFF SPUN

An economical anti-fatigue foam matting

REACH compliant closed cell matting in PVC foam composition for light duty use.

A good value, hard working, anti-fatigue matting with a ribbed slip resistant surface, Tuff Spun also reduces impact noise and protects items accidentally dropped.



BENEFITS

Certified wear resistance **ASTM 4060**: <1 gram loss

Good slip resistance

Reduces standing fatigue and underfoot noise and protects items accidentally dropped from damage

Quick to install

FEATURES

Minimal wear standing foam which will not deaden

Ribbed surface

Closed cell PVC foam construction

Supplied in 60' (18m) rolls or standard modules

STANDARD COLORS



BLACK



DARK GRAY



BLACK WITH
YELLOW EDGING



STANDARD SIZES

PRODUCT	HEIGHT	STANDARD ROLL OPTIONS*			STANDARD MODULE OPTIONS*		
Tuff Spun Gray	3/8" (9mm)	3' x 60' (0.91 x 18m)			2' x 3' (0.6 x 0.91m)	3' x 5' (0.91 x 1.5m)	3' x 10' (0.91 x 3m)
Tuff Spun Black	3/8" (9mm)	2' x 60' (0.6 x 18m)	3' x 60' (0.91 x 18m)	4' x 60' (1.22 x 18m)			
Tuff Spun Plus	3/8" (9mm)	3' x 60' (0.91 x 18m)			2' x 3' (0.6 x 0.91m)	3' x 5' (0.91 x 1.5m)	3' x 10' (0.91 x 3m)

*Supplied with integral edging to 4 sides.

TUFF SPUN WEAR

Heavy duty top layer for improved traction

Economical alternative for medium duty applications.

With an increased foam thickness of almost 50% on Tuff Spun, and incorporating a top surface wear layer, Tuff Spun Wear provides extra comfort and improved durability.

The anti-fatigue mat is suitable for most medium duty retail and commercial environments.



BENEFITS

Certified wear resistance **ASTM 4060:** <0.3 gram loss

Good slip resistance

Extra cushion comfort

Quick to install

FEATURES

Heavy duty top layer

Embossed pebble surface

Increased foam thickness

Supplied in 60' (18m) rolls or standard modules

STANDARD COLOR



DARK GRAY



STANDARD SIZES

PRODUCT	HEIGHT	STANDARD ROLL OPTION*	STANDARD MODULE OPTIONS*		
Tuff Spun Wear	9/16" (14mm)	3' x 60' (0.91 x 18m)	2' x 3' (0.6 x 0.91m)	3' x 5' (0.91 x 1.5m)	3' x 10' (0.91 x 3m)

*Supplied with integral edging to 4 sides.

TUFF SPUN DECK

Foam matting with heavy duty deck-top surface

For dry commercial and workplace environments.

Tuff Spun Deck has a wear foam layer for comfort with a checker plate embossed vinyl foam for added traction, abrasion and puncture resistance.



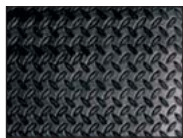
BENEFITS

- Certified wear resistance **ASTM 4060:** <0.2 gram loss
- Good slip resistance
- Extra cushion comfort
- Quick to install

FEATURES

- Heavy duty deck-top surface
- Embossed surface
- 9/16" thickness
- Supplied in 60' (18m) rolls or standard modules

STANDARD COLOR



BLACK



STANDARD SIZES

PRODUCT	HEIGHT	STANDARD ROLL OPTION*	STANDARD MODULE OPTIONS*		
Tuff Spun Deck	9/16" (14mm)	3' x 60' (0.91 x 18m)	2' x 3' (0.6 x 0.91m)	3' x 5' (0.91 x 1.5m)	3' x 10' (0.91 x 3m)

*Supplied with integral edging to 4 sides.

Patented foam construction with ESD properties

Made from high molecular density foam with 'bounce' properties up to 4 times as effective as standard foam matting for improved comfort and productivity.

Standing employees working on Zed Land will feel better and have improved productivity. Dropped components will also be protected from accidental damage. Zed Land will not deaden and shows minimal wear after 2000 taber abrator cycles in test conditions to ASTM D4060.



BENEFITS

Certified wear resistance **ASTM 4060: $\leq 1.5\%$ ****

Good slip resistance

Excellent standing fatigue reducing properties will boost productivity

Easy to cut to shape and quick to install

Provides underfoot comfort in static sensitive environments

FEATURES

Minimal wear standing foam which will not deaden

Embossed pebble surface

Patented vinyl foam construction with superior resilience

Supplied in 60' (18m) rolls or standard modules

Electrostatic dissipative (ESD) properties
Certified **ASTM D257: 10^9**

STANDARD COLORS



BLUE

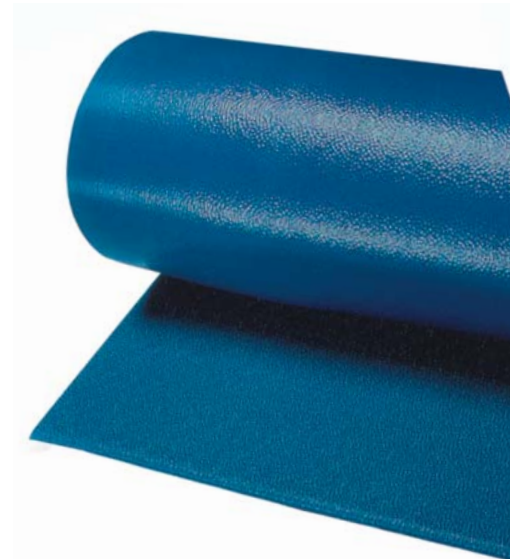


DARK GRAY

Other colors available on request.



**ASTM 4060 @ 2000 cycles



STANDARD SIZES

PRODUCT	HEIGHT	STANDARD ROLL OPTION*	STANDARD MODULE OPTIONS*		
Zed Land	3/8" (9mm)	3' x 60' (0.91 x 18m)	2' x 3' (0.6 x 0.91m)	3' x 5' (0.91 x 1.5m)	3' x 10' (0.91 x 3m)

*Supplied with integral edging to 4 sides.

Heavy duty ribbed surface on a high density foam

Outstanding slip resistance and wear with thermally laminated Zed Land foam that provides excellent anti-fatigue properties.

An exceptional combination of extremely durable Flexi Tred vinyl fused to patented Zed Land anti-fatigue blue foam. This product is manufactured with a very hard wearing slip resistant ribbed surface. Anti-fatigue matting at its most resilient.



BENEFITS

- High wear resistance and resilience
- Extra slip resistance
- Excellent standing fatigue reducing properties will boost productivity
- Easy to cut to shape and quick to install

FEATURES

- Minimal wear standing foam which will not deaden
- Ribbed vinyl surface
- Patented vinyl foam construction with superior resilience
- Supplied in 33' (10m) rolls or standard modules

STANDARD COLORS



BLUE



LIGHT GRAY



STANDARD SIZES

PRODUCT	HEIGHT	STANDARD ROLL OPTION*	STANDARD MODULE OPTIONS*		
Zed Tred	1/2" (13mm)	3'3" x 33' (1 x 10m)	3'3" x 5' (1 x 1.5m)	3'3" x 10'10" (1 x 3.3m)	3'3" x 16'6" (1 x 5m)

*Supplied with integral edging to 4 sides.

Versatile, multi-purpose matting for any workplace

Checker plate vinyl surface on a thermally laminated patented Zed Land high density foam.

Multi-purpose, anti-fatigue matting comprising Zed Land blue foam thermally fused with a robust, slip resistant wear surface in a checker plate design.

Chemical, oil and acid resistant.



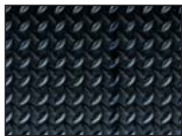
BENEFITS

- High wear resistance and resilience
- Extra slip resistance
- Excellent standing fatigue reducing properties will boost productivity
- Easy to cut to shape and quick to install

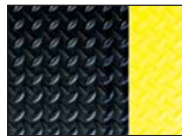
FEATURES

- Minimal wear standing foam which will not deaden
- Checker plate vinyl surface
- Patented vinyl foam construction with superior resilience
- Supplied in 60' (18m) rolls or standard modules

STANDARD COLORS



BLACK



BLACK WITH
YELLOW EDGING

Zed Chex Plus with yellow edging to increase visual safety in any area of the workplace.



STANDARD SIZES

PRODUCT	HEIGHT	STANDARD ROLL OPTIONS*		STANDARD MODULE OPTIONS*			
Zed Chex	1/2" (13mm)	3' x 60' (0.91 x 18m)	4' x 60' (1.22 x 18m)	2' x 3' (0.6 x 0.91m)	3' x 5' (0.91 x 1.5m)	3' x 10' (0.91 x 3m)	3' x 20' (0.91 x 6m)
Zed Chex Plus	1/2" (13mm)	3' x 60' (0.91 x 18m)		2' x 3' (0.6 x 0.91m)	3' x 5' (0.91 x 1.5m)	3' x 10' (0.91 x 3m)	3' x 20' (0.91 x 6m)

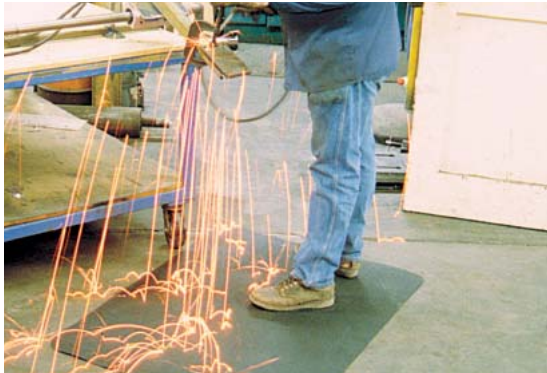
*Supplied with integral edging to 4 sides.

SPARKSAFE

Textured heat repellent rubber top surface on a foam base

Repels sparks and hot metal fragments in industrial workplaces, welding stations, assembly areas, machine shops and wherever heat generating equipment is in use.

For the toughest conditions, when the heat is on, Sparksafe is a two part, all rubber constructed anti-fatigue matting with special heat repellent properties to withstand sparks and hot metal fragments.



BENEFITS

- High wear resistance and resilience
- Repels sparks and hot metal shards
- Excellent anti-fatigue relief
- Quick to install

FEATURES

- Rubber top with rubber foam backing
- Heat resistant rubber wear layer
- Soft foam base
- Supplied in standard modules

STANDARD COLOR



BLACK

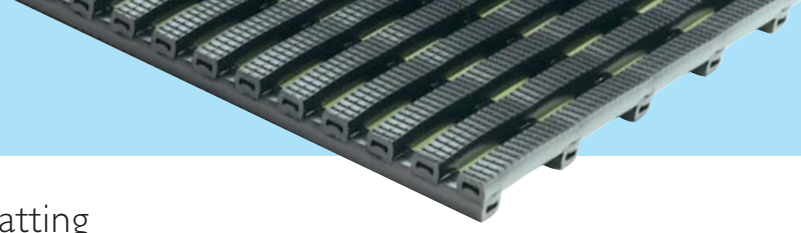


STANDARD SIZES

PRODUCT	HEIGHT	STANDARD MODULE OPTIONS*	
Sparksafe	9/16" (14mm)	2' x 3' (0.6 x 0.91m)	3' x 5' (0.91 x 1.5m)

*Supplied with integral edging to 4 sides.

HERONAIR



An economical anti-fatigue matting

A unique tubular construction matting providing effective anti-fatigue, slip resistance and drainage properties all at the same time.

A widely proven matting solution for light industrial applications where employees are standing in customer service positions, shop and canteen counters, packing lines, warehouses and the like.

Constructed with flexible PVC hollow ribs, hardwearing but lightweight, the matting has the added advantage of dissipating spillages and debris through its 3/8" open grid whilst providing a slip resistant surface.



BENEFITS

Certified slip resistance **DIN 51130: R11 - ASTM 1677: 0.6/0.6**

Excellent drainage **DIN 51130: V10**

Fatigue-reducing and insulating

Chemical, oil and acid resistant

Easy to cut on site, contours to uneven surfaces

Quick to install

Fire resistant

Environmentally-friendly

FEATURES

Etched pattern

Two layer construction

Hollow construction

Non-porous PVC

Made from flexible PVC

Supplied in 33' (10m) rolls

Certified **EN 13501: Cfl - S1**

Made from 100% recycled material

STANDARD COLOR



BLACK

Other colors available on request.



STANDARD SIZES

PRODUCT	HEIGHT	STANDARD ROLL OPTIONS*		
Heronair	3/8" (10mm)	2' x 33' (0.6 x 10m)	3' x 33' (0.91 x 10m)	4' x 33' (1.22 x 10m)

*Contact us for custom dimensions.

Anti-fatigue matting ancillaries

Heronair

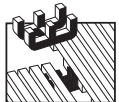


3/8" x 2" x 33'
(10mm x 50mm x 10.1m)

2" PVC edging strip

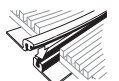
Supplied in rolls of 33' (10.1m) length with cold welding paste.

Colors: Black, Dark Gray



Connector clips - dual purpose

For joining sections of matting together side to side or end to end.



13/32" x 5'11"
(10.5mm x 1.8m)

Snap Track - Low Profile

2 part snap track can be welded to join rolls end to end or side to side for large area covering.

Supplied with cold welding paste.

Color: Dark Gray

Tuff Spun & Zed Land

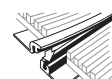


3/8" x 2" x 33'
(10mm x 50mm x 10.1m)

2" PVC edging strip

Supplied in rolls of 33' (10.1m) length with cold welding paste.

Colors: Black, Dark Gray



13/32" x 5'11"
(10.5mm x 1.8m)

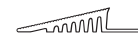
Snap Track - Low Profile

2 part low profile snap track can be welded to join rolls end to end or side to side for large area covering.

Supplied with cold welding paste.

Color: Dark Gray

Tuff Spun Wear & Tuff Spun Deck

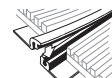


9/16" x 2 1/2" x 33'
(14mm x 60mm x 10.1m)

2 1/2" PVC edging strip

Supplied in rolls of 33' (10.1m) length with cold welding paste.

Colors: Black, Dark Gray



9/16" x 8'2"
(14mm x 2.5m)

Snap Track

2 part snap track can be welded to join rolls end to end or side to side for large area covering.

Supplied with cold welding paste.

Color: Dark Gray

For large and small floor areas

Our matting is available in module and roll format enabling versatile usage:

- Large floor areas
- Runners alongside work stations
- Single modular mats for individual work stations.

For more complex areas, the matting is easy to cut to shape and install.



Runner alongside work station



Work station module mat

Edging Options

Standard length rolls and modules of foam or foam/wear layer combination are supplied with integral edging on all 4 sides.

Foam only products (Tuff Spun, Tuff Spun Wear, Tuff Spun Deck and Zed Land) if cut on site and used as part rolls, require PVC edging strips (3/8" or 9/16" heights) to achieve an edging on cut ends.

Dual layer products (Sparksafe, ZedTred and Zed Chex) if cut on site and used as part rolls, require a field edge to be fabricated. Simply cut back and remove the underside foam, so that the top wear layer creates a sloped finish.



Integral Edging



PVC Edging



Field Edging

Barefoot and Wetside

SAFETY MATTING

- ◆ Introduction 33
- ◆ International Applications 34 - 35
- ◆ Heronrib 36
- ◆ Herontile 37
- ◆ Floorline 38
- ◆ Floorline Water Polo 39
- ◆ PillogriD 40
- ◆ Ancillaries 41



www.plastexmatting.com

Why Plastex barefoot & wetside matting?

All-round safety, comfort and hygienic performance.

The combination of bare feet and water provides potentially high risk areas for slips. Humid environments with direct skin contact mean continuous hygiene is crucial.

Our barefoot & wetside matting products are specifically designed to:

- Reduce slip and fall accidents
- Protect from fungal and bacterial contamination
- Provide underfoot comfort

Plastex barefoot & wetside matting features a non-porous construction, excellent drainage, high slip resistance and permanent anti-microbial and anti-fungal options.

Supplied in either loose laid rolls or interlocking tiles.

Rolls are 33' long and flexible in construction, allowing ease of installation, one piece large covering and cutting to shape and size on site.

Which Plastex product is right for you?

The chart below will help you choose the right mat for the right reasons, but if you have any questions contact us - we'll be delighted to help.

PRODUCT	SLIP RESISTANCE	WEAR	HYGIENE	DRAINAGE	COMFORT	USAGE
WET AREA SAFETY MATTING						
Heronrib p. 36						For comfortable barefoot traffic. Use inside or out.
Floorline p. 38						For drier walkways. Use inside or out.
Floorline Water Polo p. 39						For water polo field marking and slip resistance.
Herontile p. 37						For large wet areas. Indoor only.
WET AREA IMPACT MATTING						
PillogriD p. 40						Phenomenal drainage with a soft landing.

HYGIENE, SAFETY AND



COMFORT - INSIDE OR OUT



ALL REASONS

HERONRIB

Hygienic, comfortable, self-draining barefoot matting

The ultimate sports and leisure matting for use in wet areas where barefoot traffic is extensive.

Made from strong, non-porous PVC with channeled underbars, Heronrib will automatically self drain even the largest amounts of water. It is therefore perfect to dissipate a splash while creating one around swimming pools, saunas, jacuzzis and other wet areas with the many available attractive Heronrib colors.



BENEFITS

- Certified slip resistance **DIN 51097: C** **ASTM 1677: 0.9/0.7**
- 4 way drainage
- Excellent hygiene
- Easy to cut and clean, contours to uneven surfaces
- Quick to install
- UV resistant
- Fire resistant
- Enhanced branding or styling

FEATURES

- Embossed surface
- Two layer construction and channeled underbars
- Anti-microbial and anti-fungal additives
- Made from flexible PVC
- Supplied in 33' (10m) rolls
- Can be used indoor or outdoor
- Certified **EN 13501: Cfl - S1**
- 6 standard colors

STANDARD COLORS



OXFORD BLUE



OCEAN BLUE



CHARCOAL GRAY



FOREST GREEN



BUFF



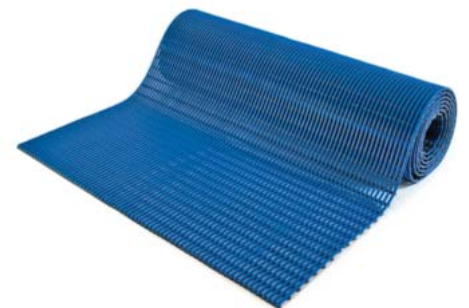
WHITE

Other colors available on request.

STANDARD SIZES

PRODUCT	HEIGHT	STANDARD ROLL OPTIONS*			
Heronrib	13/32" (10.5mm)	2' x 33' (0.6 x 10m)	3' x 33' (0.91 x 10m)	3'3" x 33' (1 x 10m)	4' x 33' (1.22 x 10m)

*Contact us for custom dimensions.



HERONTILE



Barefoot wet area tiling

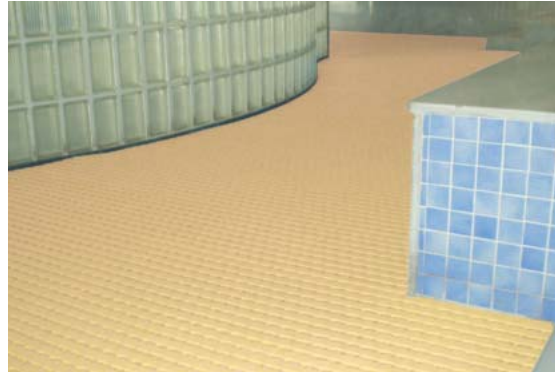
For coverage of large floor areas seamlessly and easily.

Herontile provides a hygienic, safe and attractive surface with permanent anti-fungal and antibacterial additives.

Herontile is made from an Ethylene Vinyl Acetate (EVA)* composition to guarantee softness and comfort. It also has a circular surface embossing for enhanced slip resistance and stands 5/8" (15mm) high on strong support legs so that water disperses well underneath.

*Note: EVA is only suitable for indoor applications.

Available in four bright, stable and appealing color options which are complimentary to interior designs.



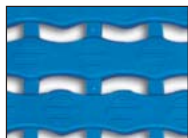
BENEFITS

- Certified slip resistance **DIN 51097: C**
- Excellent drainage
- Hygienic
- Barefoot comfort
- Easy and quick coverage of large floor areas
- Finished areas
- Can be rolled up for easy underneath cleaning & maintenance
- Enhanced branding or styling

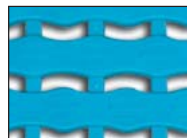
FEATURES

- Embossed surface
- 5/8" (15mm) height
- Anti-microbial and anti-fungal additives
- Soft Ethylene Vinyl Acetate (EVA) composition
- Simple, click together joining mechanism
- PVC ramped edging
- Flexible construction
- 4 standard colors

STANDARD COLORS



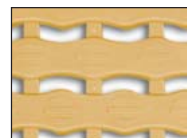
OCEAN BLUE



LIGHT BLUE



LIGHT GRAY

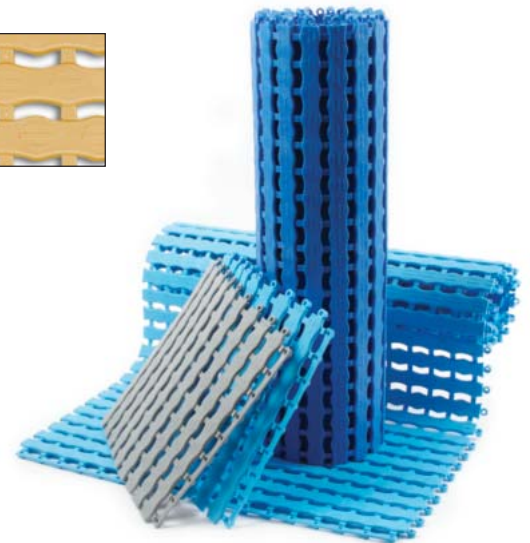


BEIGE

STANDARD SIZES

PRODUCT	HEIGHT	STANDARD TILE SIZE
Herontile	5/8" (15mm)	13" x 13" (33 x 33mm)

Available in packs of 27 tiles.



FLOORLINE

Light duty, self-draining safety

An economical and hygienic matting for light traffic changing areas and swimming pool surrounds.

Soft underfoot and decorative to look at, yet hardwearing in residential and lower traffic wetside areas, Floorline is an ideal matting solution which can be used where slip resistance is required both indoors and outdoors. Incorporates anti-microbial and anti-fungal additives for a continuous hygiene.



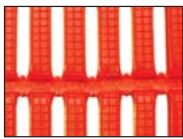
BENEFITS

- Certified slip resistance
DIN 51130: R11 DIN 51097: C ASTM 1677: 1.0/0.8
- Excellent drainage DIN 51130: V10
- Excellent hygiene
- Easy to cut on site, contours to uneven surfaces
- Quick to install
- UV resistant
- Fire resistant
- Adapt to your branding or styling

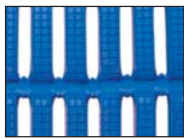
FEATURES

- Etched surface
- Open grid construction
- Infused anti-microbial and anti-fungal additives
- Made from flexible PVC
- Supplied in 33' (10m) rolls
- Can be used indoor or outdoor*
- Certified EN 13501: Cfl - S1
- 5 standard colors

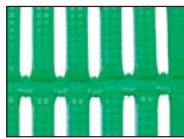
STANDARD COLORS



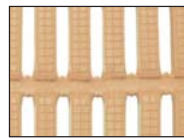
RED*



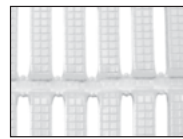
BLUE



GREEN



BEIGE



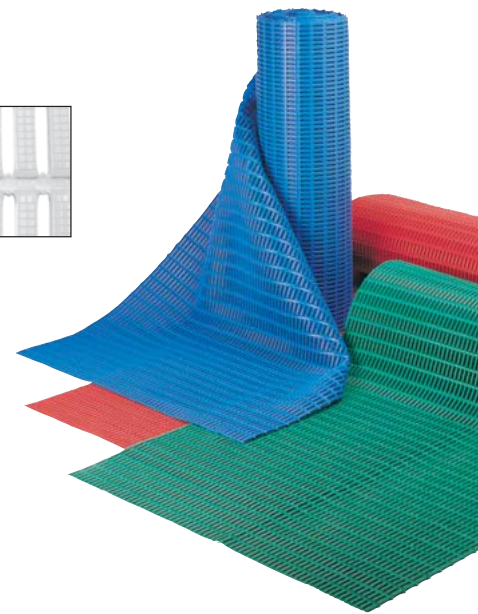
WHITE

Other colors available on request. * Red color is not colorfast in direct sunlight.

STANDARD SIZES

PRODUCT	HEIGHT	STANDARD ROLL OPTIONS**	
Floorline	1/4" (6mm)	2' x 33' (0.6 x 10m)	3' x 33' (0.91 x 10m)

**Contact us for custom dimensions.



FLOORLINE WATER POLO

The field marking matting

An efficient dual purpose field marking system easily applied and removed to increase visibility of the field lines while ensuring safe pool side traffic thanks to its slip resistant properties.

Floorline Water Polo matting is very convenient to use at water polo sessions, being light, quick and easy to install.

Floorline Water Polo matting is supplied as a one piece tri-colored 49' (15m) roll (green, yellow and red), acting as a field marking solution while ensuring continued safety underfoot for the referee even when the matting is wet.



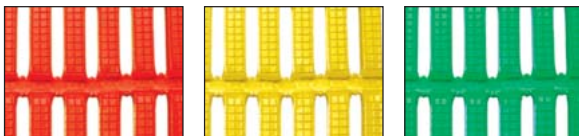
BENEFITS

- Certified slip resistance
DIN 51130: R11 DIN 51097: C ASTM 1677: 1.0/0.8
- Excellent drainage DIN 51130: V10
- Excellent hygiene
- Quick to lay down for field set-up
- Increase visibility of field marking lines
- Easy to store and carry
- UV resistant
- Fire resistant

FEATURES

- Etched surface
- Open grid construction
- Anti-microbial & anti-fungal additives
- Made from flexible PVC, supplied in one piece roll
- Tri-colored one piece roll:
Green (33'), yellow (10') and red (6'7")
- 15" diameter when rolled
- Can be used indoor or outdoor*
- Certified EN 13501: Cf1 - S1

STANDARD COLORS



RED*

YELLOW

GREEN

* Red color is not colorfast in continual direct sunlight.

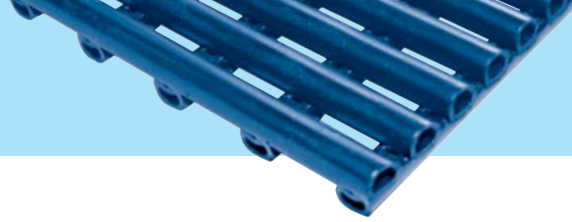
Floorline Water Polo is a Tri-Colored mat, making up the three colors of red, yellow and green.

STANDARD SIZES

PRODUCT	HEIGHT	STANDARD ROLL OPTIONS**	
Floorline Water Polo	1/4" (6mm)	2' x 49' (0.6 x 15m)	3' x 49' (0.91 x 15m)

**Contact us for custom dimensions.

P I L L O G R I D



Cushioning matting for aquatic applications

A large open grid and soft vinyl with hollow profile combining phenomenal drainage with a soft landing.

Placed over metal grates at the back and front of surfing machines, Pillogrid matting was specifically developed to provide excellent drainage and superior cushioning for aquatic safety.

Large roll format further adds to safety by removing the need for joints in action areas.

This matting can be supplied in factory welded panels for quick and easy installation on aquatic attractions.



BENEFITS

- Soft landing
- High volume drainage
- Highly resistant
- Easy to cut on site, contours to uneven surfaces
- Quick to install
- UV resistant
- Hard wearing
- Hygienic

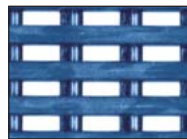
FEATURES

- Hollow tube construction
- Large open grid format
- "D" profile for maximum weld strength
- Made from flexible PVC
- Supplied in rolls or fabricated panels
- Can be used indoor or outdoor
- All welded construction
- All flexible PVC construction

STANDARD COLORS



BLACK



BLUE



STANDARD SIZES

PRODUCT	HEIGHT	STANDARD ROLL OPTIONS*			
		2' x 16'6"	3' x 16'6"	2' x 33'	3' x 33'
Pillogrid	3/4" (20mm)	(0.6 x 5m)	(0.91 x 5m)	(0.6 x 10m)	(0.91 x 10m)

*Contact us for custom dimensions.

Barefoot & wetside matting and tiling ancillaries

Heronrib

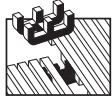


3/8" x 2" x 33'
(10mm x 50mm x 10.1m)

2" PVC edging strip

Supplied in rolls of 33' (10.1m) length with cold welding paste.

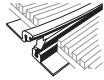
Colors: Black, Dark Gray



Connector clips - dual purpose

For joining sections of matting together side to side or end to end.

Supplied in packs of 10.



13/32" x 5'11"
(10.5mm x 1.8m)

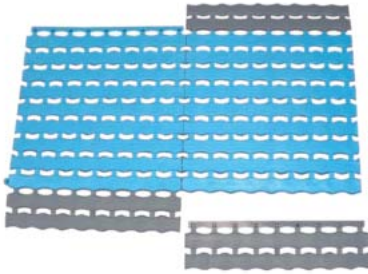
Snap Track - Low Profile

2 part low profile snap track can be welded to join rolls end to end or side to side for large area covering.

Supplied with cold welding paste.

Color: Dark Gray

Herontile



EVA ramped edging

Snap-on edging supplied in 13" (33cm) lengths

Colors: Dark Gray, Ocean Blue

5/8" x 2 3/4" x 13"
(15mm x 7cm x 33cm)

PillogriD



16'5" (5m) on the shorter of 2 dimensions x physical weight of panel @ 1.45 lb/sq.ft. (7.1 kg/sq.m)

Custom size panels

Plastex can supply aquatic attraction manufacturers with prefabricated robot welded panels. The maximum dimension of these panels is 16'5" (5m) on the shorter of the length or width. Consideration should also be given to handling and shipping of the overall weight of the fabricated panel. PillogriD weighs 1.45lb/sq.ft (7.1kg/sq.m).

Frontrunner Entrance Flooring Systems

- ◆ Why Entrance Matting **43**
- ◆ International Applications **44**
- ◆ Product Comparison **45**
- ◆ Frontrunner Entry **46**
- ◆ Frontrunner XT **47**
- ◆ Frontrunner Brush **48**
- ◆ Frontrunner Brush Wide **49**
- ◆ Frontrunner Plus **50**
- ◆ Frontrunner Plus
Custom Logos **51**
- ◆ Insert Colors **52 - 53**
- ◆ Frontrunner SB **54**
- ◆ Frontrunner SB+ **55**
- ◆ Surface Modules **56 - 57**
- ◆ Recessed Ancillaries &
Installation Instructions **58 - 59**
- ◆ Surface Mounted Ancillaries &
Installation Instructions **60 - 61**



www.plastexmatting.com

Why is Entrance Flooring important?

Choosing the right entrance flooring matters for three good reasons:

- Style
- Health and Safety
- Cleanliness and Durability

Style

Your entrance flooring is, by definition, one of the first things clients and visitors see; so it plays a vital role in creating first impressions. As you'll see from the location pictures in this brochure our range of colors, custom logos, styles and tread patterns will make sure you get it right.

Health and Safety

Unfortunately, we live in a litigious age which is why it's good to know the Frontrunner entrance matting products are tested under DIN 51130 and achieved ratings as high as R12. This means they have been tested to be slip resistant at an angle of 27°, even when wet. This translates to peace of mind that your entrance flooring system is independently tested giving a performance safe entrance flooring. Additionally, the Frontrunner Entrance Flooring System conforms to the requirements of the BS 8300:2009 Design of buildings and their approaches to meet the needs of disabled people.

Cleanliness and Durability

Up to 80% of dirt comes into your building on shoes or wheels. All Frontrunner entrance flooring is designed to remove, trap and hide this dirt from the traffic areas until it is easily removed during cleaning.

Our flooring deals with dirt so effectively that it will expand the life of your internal floor finishes and will help reduce your cleaning intervals. Frontrunner's one piece welded roll format ensures a durable and effective product. For further peace of mind, many of the installations shown in this brochure have been in place for ten years or more and still look as good as the day they were fitted.

Why Frontrunner Entrance Flooring System?

- All PVC grid products are 100% recyclable and REACH* compliant
- Excellent Fire rating - EN & ASTM
- Available in rolls for seamless, quick and easy installations on-site
- Loose lay open grid construction removes dirt from traffic area and eases cleaning
- R12 slip resistance rating under DIN 51130 on Frontrunner XT and R11 rating on Frontrunner Entry, Frontrunner SB and Frontrunner SB+
- Frontrunner Plus available in 16 different color combinations. May also be customized with the incorporation of a logo panel
- Qualifies for IEQ Credit 5: Indoor Chemical and Pollutant Source Control LEED 2009 for New Construction and Major Renovations Rating System



ISO 9001 accredited
(UK since 1993)
ensures quality entrance
flooring systems that
are fit for purpose.



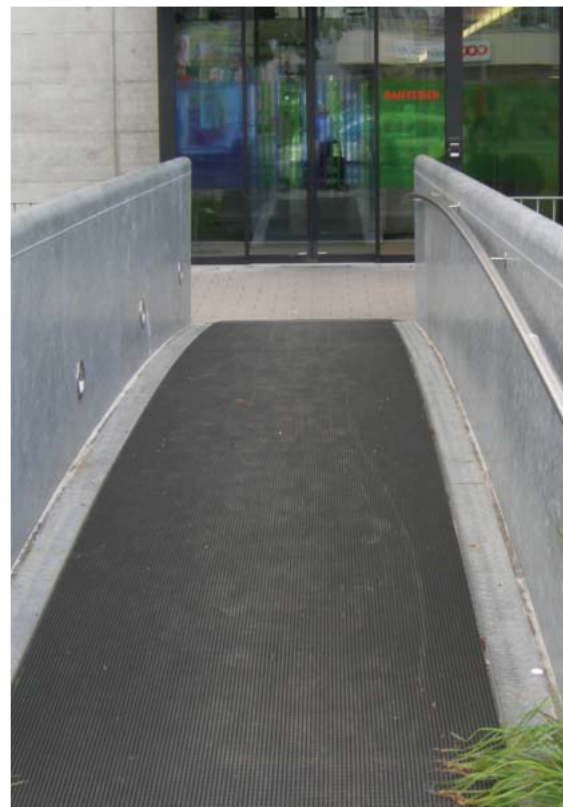
Founder Member

Directive EC 1907/2006 – Annex I



* Registration, Evaluation,
Authorization and Restriction
of Chemical substances.

FRONTRUNNER ENTRANCE FLOORING SYSTEM



Vinyl Entrance Flooring System for high traffic areas

Recommended and Installed Worldwide for:

- Hotels • Hospitals • Industrial sites • Leisure facilities
- Office/Banks • Public buildings • Restaurants
- Retail locations • Schools • Supermarkets



Which Frontrunner Entrance Flooring System is right for you?

Depending on the area you are looking to cover and amount of traffic, we recommend choosing a primary matting for effective removal of dirt and a secondary matting for removal of any residual dirt and drying of moisture.

PRODUCT	FRONT/ SIDE ELEVATION	SLIP RESISTANCE	SCRAPER	MOISTURE REMOVAL	LOCATION	USAGE
VINYL OPEN GRID CONSTRUCTION - PRIMARY MATTING						
Frontrunner Entry Frontrunner Entry Low Profile p. 46					B	High traffic internal areas.
Frontrunner XT p. 47					A <small>(also ideal for walkways, balconies and decking)</small>	High traffic internal or external areas.
VINYL OPEN GRID CONSTRUCTION WITH BRUSH INSERTS - PRIMARY MATTING						
Frontrunner Brush p. 48					A	Maximum dirt removal in internal/external areas.
Frontrunner Brush Wide p. 49					A	Larger debris removal in external areas.
VINYL OPEN GRID CONSTRUCTION WITH ABSORBENT INSERTS - SECONDARY MATTING						
Frontrunner Plus Frontrunner Plus Low Profile p. 50					B C	Maximum moisture removal in high traffic internal areas.
VINYL OPEN RIBBED CONSTRUCTION WITH A SOLID BACK - SECONDARY MATTING						
Frontrunner SB p. 54					B	Surface mounted in high traffic internal areas.
Frontrunner SB+ p. 55					B C	Surface mounted moisture removal in high traffic internal areas.



FRONTRUNNER ENTRY

Open grid, slip resistant and heel-proof matting

A uniquely effective matting to help prevent dirt from entering buildings in high traffic entryways.

The aggressive diamond tread pattern scrapes dirt off shoes, while the 9/16" (14mm) or 13/32" (10.5mm) open grid structure allows it to fall out of the way. This efficient, high quality, "scrape and clean" system also protects internal floor coverings and significantly reduces cleaning costs.

The special close space design of the open grid bars also allows the product to be spike heel proof and suitable for wheel chairs, shopping carts and other small wheeled traffic. Fronrunner Entry can be used in combination with other products from the Fronrunner Entrance Flooring System range for a complete interior and exterior entrance matting solution.



BENEFITS

Certified slip resistance **DIN 51130: R11** **ASTM I677: 0.6/0.6**

Excellent drainage **DIN 51130: V10**

Fire resistant

Easy to maintain

Seamless, quick and easy installations

Easy to cut on site, contours to uneven surfaces

Spike heel proof

Enhanced branding on styling

FEATURES

Diamond cut pattern

Two layer open grid construction

EN 13501 - I : 2007- Bfl - SI **ASTM E648: Class I**

Can be rolled up or lifted for cleaning

Supplied in 33' (10m) rolls - modules also available

Made from flexible PVC

Close mesh grid matting

5 standard grid colors

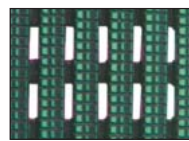
STANDARD COLORS



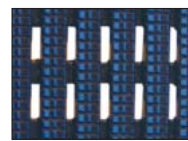
DARK GRAY



DARK BROWN



HOLLY GREEN



OXFORD BLUE



BLACK

Other colors available on request.

Fronrunner Entry Low Profile

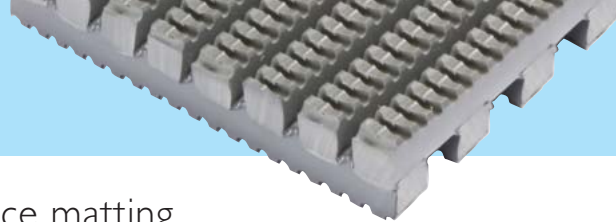
A low profile 13/32" (10.5mm) option that aligns with standard ceramic floor tiles and carpets in recessed applications. This can prevent the need for creating a deeper matwell in an existing subfloor in order to accommodate the entrance matting system.

STANDARD SIZES

PRODUCT	HEIGHT	STANDARD ROLL OPTIONS			STANDARD MODULE OPTIONS*		
Frontrunner Entry	9/16" (14mm)	2' x 33' (0.6 x 10m)	3' x 33' (0.91 x 10m)	4' x 33' (1.2 x 10m)	2' 7" x 3' 11" (0.8 x 1.2m)	3' 3" x 4' 11" (1 x 1.5m)	3' 7" x 6' 7" (1.1 x 2m)
Low Profile	13/32" (10.5mm)	2' x 33' (0.6 x 10m)	3' x 33' (0.91 x 10m)	4' x 33' (1.2 x 10m)			

*Surface modules are supplied with factory fitted PVC ramped edging to four sides.

FRONTRUNNER XT



Extra slip resistant and heel-proof entrance matting

An entrance matting with a deeper etched tread for interior and exterior high traffic applications.

With all the features of Frontrunner Entry, Frontrunner XT has an extra aggressive, deep etched tread to give additional underfoot traction in outdoor applications and to remove the heaviest amounts of undershoe dirt and debris.

Frontrunner XT has therefore been successfully used where walkways and entrances are prone to becoming slippery and hazardous in wet conditions, and in particular on hardwood decking, bridges and general outdoor pedestrian areas.



BENEFITS

- Certified slip resistance **DIN 51130: R12**
- Excellent drainage **DIN 51130: V10**
- Fire resistant
- Easy to maintain
- Seamless, quick and easy installations
- Easy to cut on site, contours to uneven surfaces
- Spike heel-proof
- Enhanced branding or styling

FEATURES

- Diamond cut pattern
- Two layer open grid construction
- EN 13501 - I : 2007- Bfl - S1**
- Can be rolled up or lifted for cleaning
- Supplied in 33' (10m) rolls
- Made from flexible PVC
- Close mesh grid matting
- 3 standard grid colors

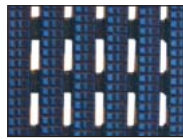
STANDARD COLORS



DARK GRAY



BLACK



OXFORD BLUE

STANDARD SIZES

PRODUCT	HEIGHT	STANDARD ROLL OPTIONS*		
Frontrunner XT	9/16" (14mm)	2' x 33' (0.6 x 10m)	3' x 33' (0.91 x 10m)	4' x 33' (1.2 x 10m)

*To ensure maximum flexibility and convenience, Frontrunner entrance matting system can be delivered in rolls or cut to size.



FRONTRUNNER BRUSH

Slip resistant entrance matting with brush inserts

For maximum moisture and dirt removal in external areas.

The brush strips with bristles will scour snow, mud and other heavy contaminants from the shoe, boot or wheel, helping to keep dirt from entering buildings, even under the most extreme weather conditions.

Frontrunner Brush works as a "stand alone" module or in combination with other Frontrunner Entrance Flooring Systems.



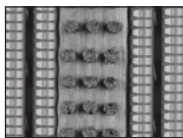
BENEFITS

- High soil removal and slip resistance
- Excellent drainage
- Excellent scraping
- Fire resistant
- Easy to maintain
- Seamless, quick and easy installations
- Easy to cut on site, contours to uneven surfaces

FEATURES

- Diamond cut pattern
- Two layer open grid construction
- Nylon brush inserts
- EN 13501 - 1 : 2007- Cl - S2
- Can be rolled up or lifted for cleaning
- Supplied in 33' (10m) rolls - modules also available
- Made from flexible PVC

STANDARD COLORS



DARK GRAY



BLACK



STANDARD SIZES

PRODUCT	HEIGHT	STANDARD ROLL OPTIONS*			STANDARD MODULE OPTIONS**		
Frontrunner Brush	9/16" - 3/4" (14-19mm)	2' x 33' (0.6 x 10m)	3' x 33' (0.91 x 10m)	4' x 16'6" (1.2 x 5m)	2' 7" x 3' 11" (0.8 x 1.2m)	3' 3" x 4' 11" (1 x 1.5m)	3' 7" x 6' 7" (1.1 x 2m)

*Contact us for custom dimensions.

**Surface modules are supplied with factory fitted PVC ramped edging to four sides.

FRONTRUNNER BRUSH WIDE

Extra wide grid matting with brush inserts

For large debris removal in external areas.

Icy and snowy winter months can be characterized by a lot of gravel, snow or stones.

With similar properties to Frontrunner Brush, but with a wider grid that allows larger debris such as small stones, snow and ice to fall through and be contained.

It works either as a stand alone or can be interchanged with another Frontrunner system in summer months to provide the complete entrance solution.



BENEFITS

- Ideal for removing salt, snow or gravel
- High soil removal and slip resistance
- Excellent drainage
- Excellent scraping
- Fire resistant
- Easy to maintain
- Seamless, quick and easy installations
- Easy to cut on site, contours to uneven surfaces

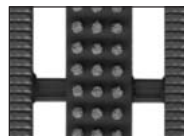
FEATURES

- Extra wide grid
- Diamond cut pattern
- Two layer open grid construction
- Nylon brush inserts
- EN 13501 - I : 2007- Cf1 - S1
- Can be rolled up or lifted for cleaning
- Supplied in 33' (10m) rolls - modules also available
- Made from flexible PVC

STANDARD COLORS



DARK GRAY



BLACK



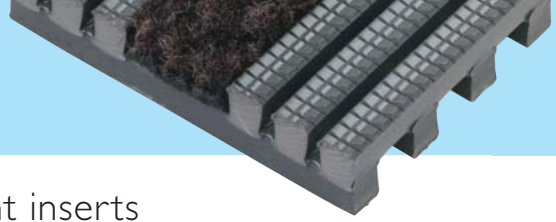
STANDARD SIZES

PRODUCT	HEIGHT	STANDARD ROLL OPTIONS*			STANDARD MODULE OPTIONS**		
Frontrunner Brush Wide	9/16" - 3/4" (14-19mm)	2' x 33' (0.6 x 10m)	3' x 33' (0.91 x 10m)	4' x 16'6" (1.2 x 5m)	2' 7" x 4' (0.8 x 1.2m)	3' 3" x 4'11" (1 x 1.5m)	3' 7" x 6'7" (1.1 x 2m)

*Contact us for custom dimensions.

**Surface modules are supplied with factory fitted PVC ramped edging to four sides.

FRONTRUNNER PLUS



Open grid entrance matting with absorbent inserts

Maximum removal of residual dirt and moisture in high traffic internal areas.

Protects your internal floorings and reduces cleaning costs.

Frontrunner Plus, available in two heights, is an open grid vinyl construction spike heel-proof and wheelchair friendly entry mat. It effectively removes, retains and dries soil and moisture from underfoot thanks to its slip-resistant surface and absorbent inserts. The positioning of the scraper bars on Frontrunner Entrance Flooring System can be varied to allow the incorporation of a logo panel. The system is of one-piece vinyl construction and is therefore both quiet underfoot and ideal for use in conjunction with under floor and upright loss prevention systems.



BENEFITS

- High soil removal & slip resistance
- Excellent drainage
- Maximum moisture removal
- Fire resistant
- Easy to maintain
- Seamless, quick and easy installations
- Easy to cut on site, contours to uneven surfaces
- Heel and wheel-proof
- Reduces the need of a deeper matwell
- Enhanced branding or styling

FEATURES

- Diamond cut pattern
- Two layer open grid construction
- Absorbent inserts
- Certified EN 13501 - 1 : 2007- Cfl - S2 ASTM E648 : Class I
- Can be rolled up or lifted for cleaning
- Supplied in 33' (10m) rolls - modules also available
- Made from flexible PVC
- Close mesh grid matting
- Available in a low profile 13/32" (10.5mm) option
- Up to 50 different color combinations available

STANDARD COLORS

For grid colors and carpet color combinations please see pages 52-53.

STANDARD SIZES

PRODUCT	HEIGHT	STANDARD ROLL OPTIONS*			STANDARD MODULE OPTIONS**		
Frontrunner Plus	9/16" - 5/8" (14 - 16mm)	2' x 33' (0.6 x 10m)	3' x 33' (0.91 x 10m)	4' x 33' (1.2 x 10m)	2' 7" x 3' 11" (0.8 x 1.2m)	3' 3" x 4' 11" (1 x 1.5m)	3' 7" x 6' 7" (1.1 x 2m)
Low Profile	13/32" - 1/2" (10.5 - 12mm)	2' x 33' (0.6 x 10m)	3' x 33' (0.91 x 10m)	4' x 33' (1.2 x 10m)			

*Contact us for custom dimensions.

**Surface modules are supplied with factory fitted PVC ramped edging to four sides.

Frontrunner Plus Low Profile

A low profile 13/32" (10.5mm) option that aligns with standard ceramic floor tiles and carpets in recessed applications without the need to create a deeper matwell in an existing subfloor.

CUSTOM LOGOS

The positioning of the scraper bars on Frontrunner Entrance Flooring Systems can be varied to allow the incorporation of a logo panel.

Logo panels are achieved by die cutting with another compatible high quality absorbent insert, giving a permanent and color-fast message.

Logo panels run the width of the matwell and are 18-20" tall, providing a highly visible message in the all important 'first impression' area.

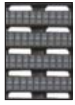
Frontrunner Entrance Systems incorporating logos can be supplied for recessed systems or surface mounted modular mats.



DESIGN COMBINATIONS

Frontrunner Plus is available in a choice of 5 grid colors and 10 coordinating absorbent insert colors. Shown below is each absorbent insert swatch with the most popular grid choice and the 5 alternative grid colors available.

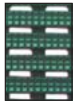
ALTERNATIVE
GRID COLORS:



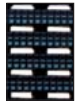
Dark Gray



Dark Brown



Holly Green



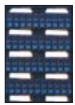
Black



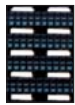
Dark Gray



Dark Brown



Oxford Blue



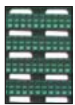
Black



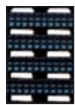
Oxford Blue



Dark Brown



Holly Green



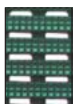
Black



Oxford Blue



Dark Brown



Holly Green



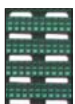
Black



Oxford Blue



Dark Brown

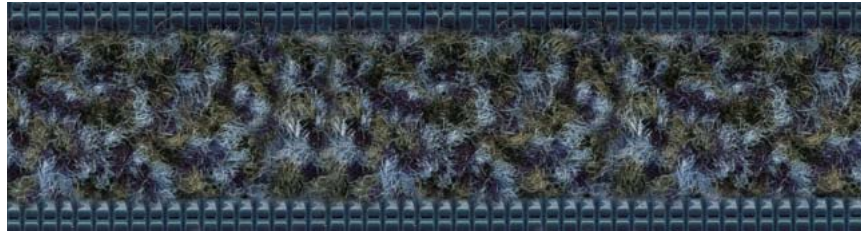


Holly Green



Dark Gray

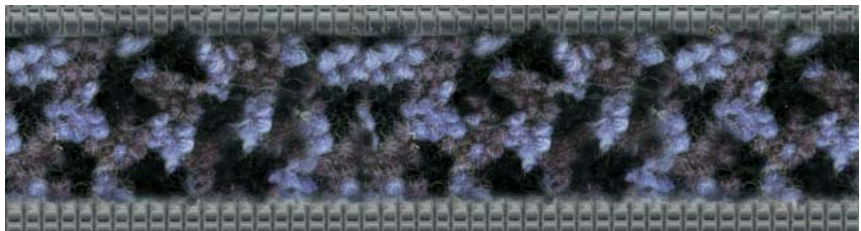
INSERT: **BASALT**
GRID SHOWN: **OXFORD BLUE**



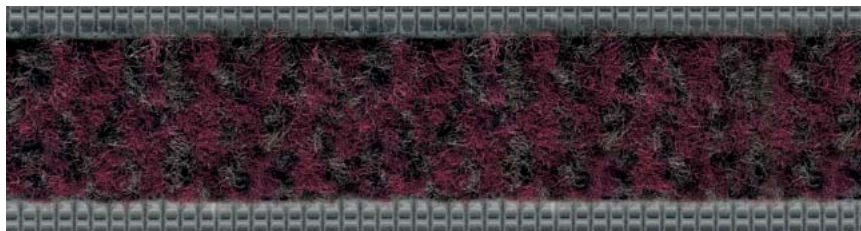
INSERT: **80/20+ GREEN***
GRID SHOWN: **HOLLY GREEN**



INSERT: **80/20+ GRAY***
GRID SHOWN: **DARK GRAY**



INSERT: **SANDSTONE**
GRID SHOWN: **DARK GRAY**



INSERT: **SLATE**
GRID SHOWN: **BLACK**



This provides a combination of 50 differing colorways designed to create the optimum choice for today's interior designer and specifier alike. (See www.plastexmatting.com/frontrunner-plus.html for full specifications).

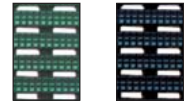
INSERT: 3025
 GRID SHOWN: OXFORD BLUE



ALTERNATIVE
 GRID COLORS:



Dark Gray Dark Brown

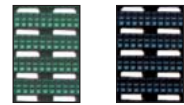


Holly Green Black

INSERT: 605
 GRID SHOWN: DARK BROWN

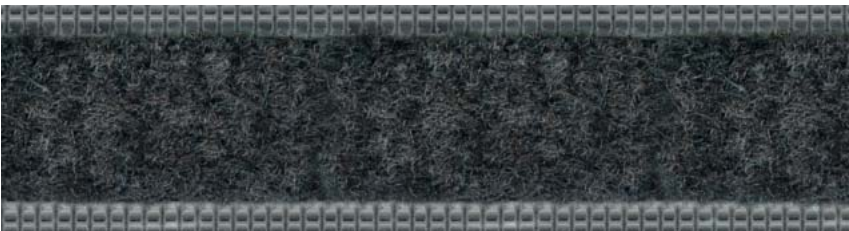


Dark Gray Oxford Blue

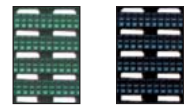


Holly Green Black

INSERT: 606
 GRID SHOWN: DARK GRAY



Oxford Blue Dark Brown

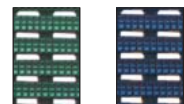


Holly Green Black

INSERT: 607
 GRID SHOWN: BLACK



Dark Gray Dark Brown

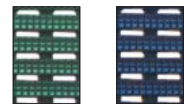


Holly Green Oxford Blue

INSERT: 608
 GRID SHOWN: BLACK



Dark Gray Dark Brown



Holly Green Oxford Blue

Color range shown above may therefore be subject to variation, please check selected carpet insert color(s) prior to ordering. Due to limitations of the printing process, actual colors shown may vary. All carpet insert colors are subject to manufacturing availability.

FRONTRUNNER SB

Vinyl ribbed, solid backed entrance matting

Laid directly on top of sub-floor, Frontrunner SB, being ¼” thick, removes the need for a matwell and fits easily within existing floor coverings or surrounded by carpet tiles.

Frontrunner SB's ribbed pattern scrapes dirt at the entrance area, which is effectively contained away from the traffic area. The solid backing and ribbed construction enable quick and effective vacuuming.

Frontrunner SB can also be used on top of current flooring with ramped edging to provide a slip resistant walkway.



BENEFITS

- Certified slip resistance **DIN 51130: R11** **ASTM C1028: 0.6/0.6**
- Fire resistant
- Surface mounted
- Can be adhered to sub-floor in high traffic areas
- Easy to cut on site, contours to uneven surfaces
- Seamless, quick and easy installations
- Lightweight
- Heel and wheel-proof
- Rolling resistance

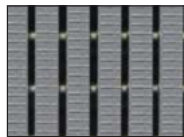
FEATURES

- Etched pattern
- Certified **EN 13501 - I : 2007- Cf1 - S1** **ASTM E648: Class 2**
- ¼” (6.5mm) grid height
- Solid backing
- Made from flexible PVC
- Supplied in 33’ (10m)
- One layer hollow construction
- Close mesh grid matting
- ASTM F2753:** No apparent damage to the vinyl portion of the system after 1,000 cycles at 500lbs

STANDARD COLORS



BLACK



GRAY



STANDARD SIZES

PRODUCT	HEIGHT	STANDARD ROLL OPTION
Frontrunner SB	1/4” (6.5mm)	3’3” x 33’ (1 x 10m)

FRONTRUNNER SB+

Vinyl ribbed, solid backed entrance matting with carpet inserts

Without the need of a recessed matwell, Frontrunner SB+ cleans, scrapes and dries dirt and moisture at the entrance.

In addition to Frontrunner SB's ribbed pattern that scrapes dirt off shoes and solid back for containment of dirt, Frontrunner SB+ has added absorbent inserts with monofilament scrapers to remove moisture at the entrance.

Featuring a grid of ¼" thickness, Frontrunner SB+ can either be laid directly on top of sub-floor or be used on top of current flooring with ramped edging.



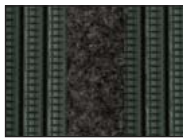
BENEFITS

- Certified slip resistance **DIN 51130: R11** **ASTM 1677: 0.6/0.6**
- Maximum moisture removal
- Fire resistant
- Surface mounted
- Can be adhered to sub-floor in high traffic areas
- Easy to cut on site, contours to uneven surfaces
- Seamless, quick and easy installations
- Lightweight
- Heel and wheel-proof
- Rolling resistance

FEATURES

- Etched pattern
- Absorbent inserts with monofilament scrapers
- EN 13501 - I : 2007- Cfl - S1** **ASTM E648: Class 2**
- ¼" grid height
- Solid backing
- Made from flexible PVC
- Supplied in 33' (10m)
- One layer hollow construction
- Close mesh grid matting
- ASTM F2753: 0.080** thickness loss after 1,000 cycles at 500lbs

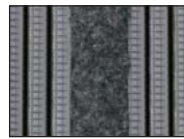
STANDARD COLORS



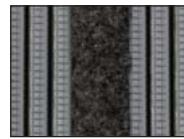
BLACK WITH 607 INSERT



BLACK WITH 608 INSERT



GRAY WITH 606 INSERT



GRAY WITH 607 INSERT



STANDARD SIZES

PRODUCT	HEIGHT	STANDARD ROLL OPTION	STANDARD MODULE OPTION*
Frontrunner SB+	1/4" - 5/16" (6.5/8mm)	3'3" x 33' (1 x 10m)	3'3" x 4'11" (1 x 1.5m)

*Surface modules are supplied with factory fitted PVC ramped edging to four sides.

FRONTRUNNER ENTRANCE

Fronrunner modules can be positioned in minutes and are available in three standard sizes as shown below, in a range of colors with factory fitted ramped edging to four sides.



Fronrunner Entry



Fronrunner Brush



Fronrunner Brush Wide



Fronrunner Plus



Fronrunner Plus

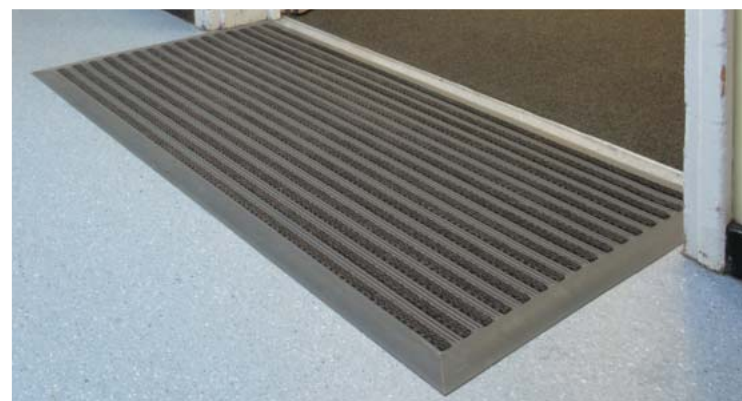
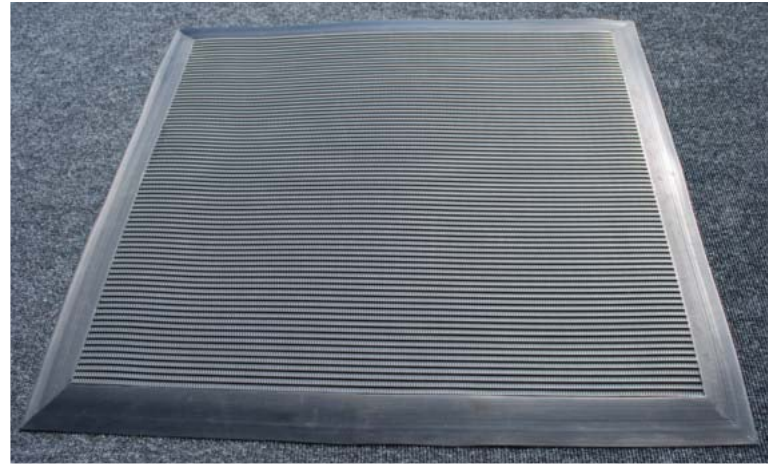


Fronrunner SB+

PRODUCT	HEIGHT	STANDARD MODULE OPTIONS		
Fronrunner Entry	9/16" (14mm)	2'7" x 4' (80 x 120cm)	3'3" x 4'11" (100 x 150cm)	3'7" x 6'7" (110 x 200cm)
Fronrunner Brush	3/4" (19mm)	2'7" x 4' (80 x 120cm)	3'3" x 4'11" (100 x 150cm)	3'7" x 6'7" (110 x 200cm)
Fronrunner Brush Wide	3/4" (19mm)	2'7" x 4' (80 x 120cm)	3'3" x 4'11" (100 x 150cm)	3'7" x 6'7" (110 x 200cm)
Fronrunner Plus	5/8" (16mm)	2'7" x 4' (80 x 120cm)	3'3" x 4'11" (100 x 150cm)	3'7" x 6'7" (110 x 200cm)
Fronrunner SB+	5/16" (8mm)		3'3" x 4'11" (100 x 150cm)	

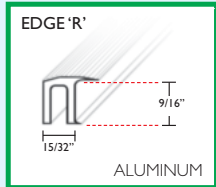


FLOORING SURFACE MODULES

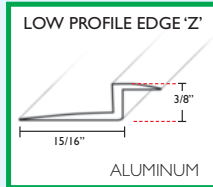
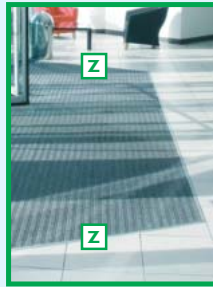


Recessed Ancillaries

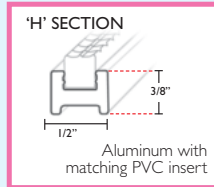
For recessed applications, a full range of frames and dividers are purposely designed to provide level and smooth transitions, and simple installations during actual entrance fit out. For full details visit www.plastexmatting.com/recessed-ancillaries.html



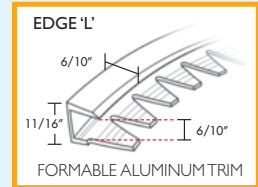
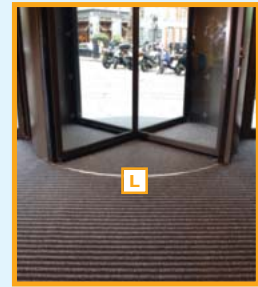
For left and right extremities of well to cap and secure ends of 9/16" - 3/8" matting.



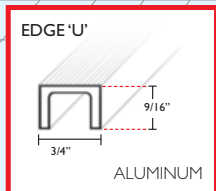
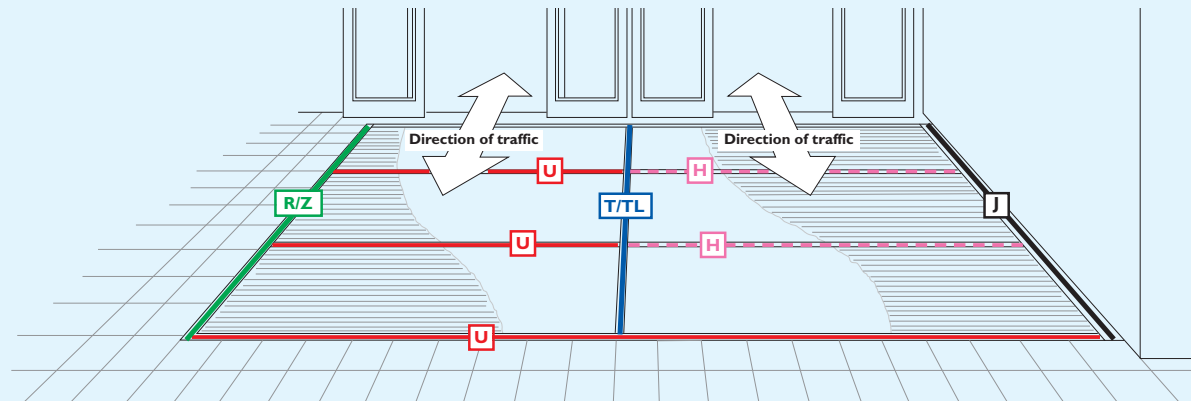
Used for left and right extremities of 3/8" matting in conjunction with ceramic tiles.



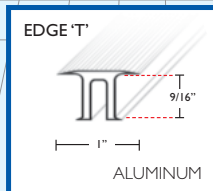
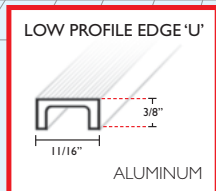
Used as "an invisible divider" for front to back installations of 9/16" - 3/8" matting.



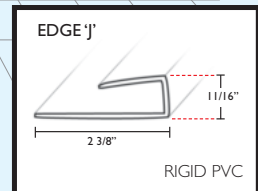
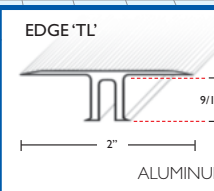
For circular door and non-rectangular installations of 9/16" - 3/8" matting.



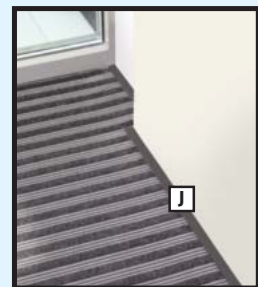
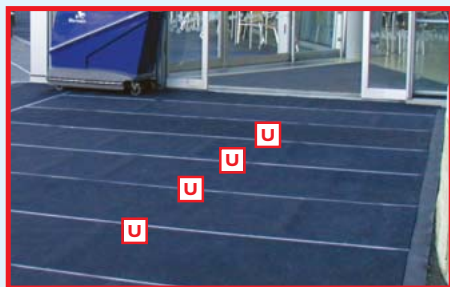
A front to back frame or divider used with 9/16" - 3/8" matting.



Frames of different widths used as dividers for large left to right installations of 9/16" matting.



For left and right extremities of well to cap and secure ends of 9/16" matting when against a wall.



Aluminium frames are available in natural anodized finish. For design elegance and color continuity, the U, R and T frames are also available in Dark Gray and Black. Edge J, in rigid PVC, is available in Dark Gray or Black.

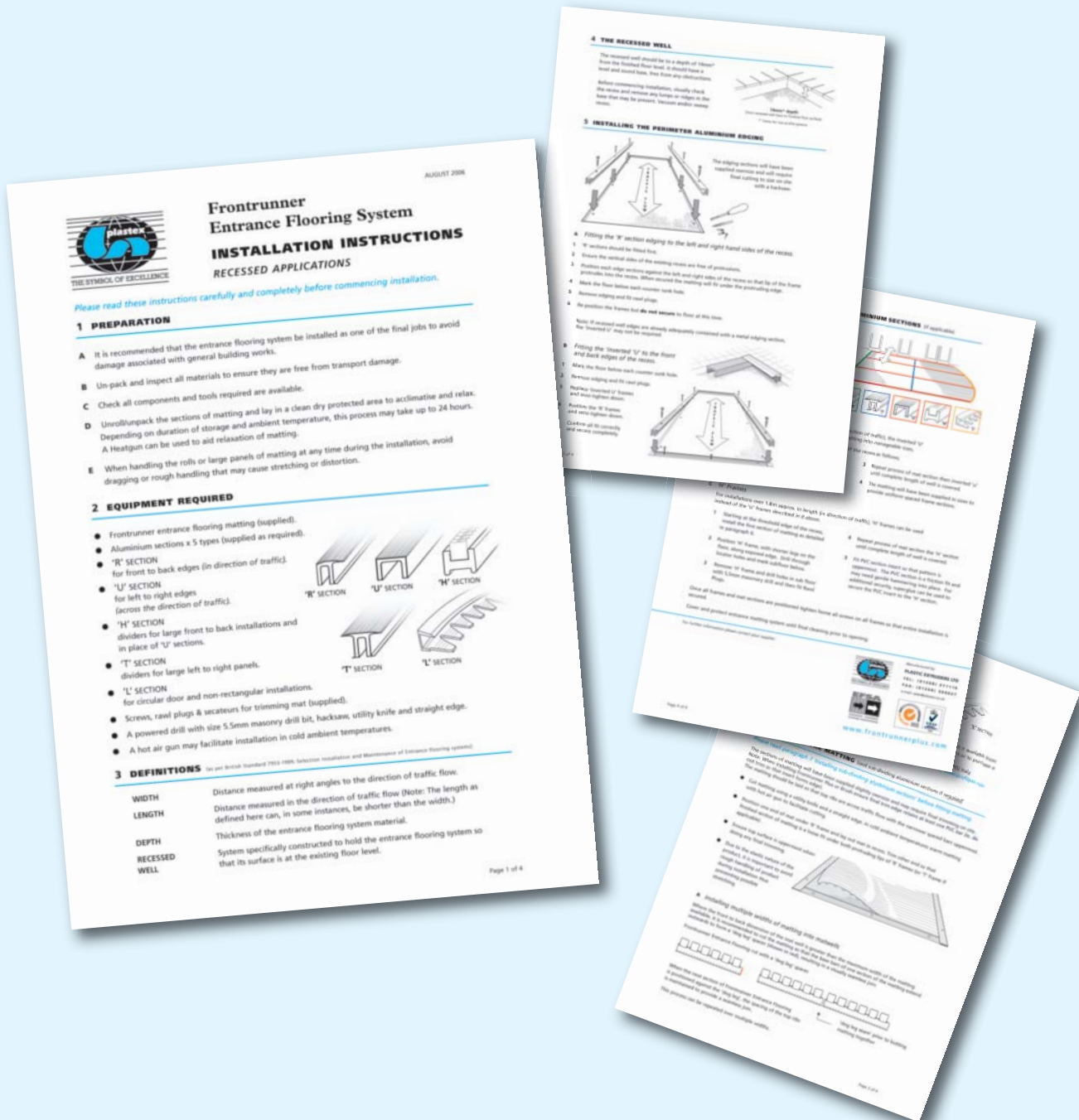
Recessed Installation Instructions

No advance templating is required - cut on site, save time and value

The Frontrunner Entrance Flooring System uses a simple but effective framing method, which is installed at the same time as the entrance flooring. As the system is supplied in rolls, the installation is quick and easy and does not require any advance templating. Additional visits to site for fitting the matwell frame when the floor slab is poured are also not required.

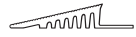
A range of frames are utilized where large areas of matting are to be installed. The frames are used to divide, cap and secure ends or form shaped edges where required (see page 58).

The simplicity of the Frontrunner Entrance Flooring Systems allow it to be installed by flooring professionals nationwide.



Entrance matting surface mounted ancillaries

Fronrunner Entry & Fronrunner Plus



9/16" x 2 1/2" x 33'
(14mm x 60mm x 10.1m)

2 1/2" PVC edging strip

Supplied in rolls of 33' (10.1m) length with cold welding paste.

Colors: Black, Dark Gray



9/16" x 3 3/4" x 33'
(14mm x 100mm x 10.1m)

3 3/4" PVC edging strip

Supplied in rolls of 33' (10.1m) length with cold welding paste.

Colors: Black, Dark Gray, Yellow

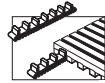


5/8" x 1 13/16" x 6'6"
(15mm x 45mm x 2m)

Aluminum edging strip

Supplied in sections of 6'6" (2m) length with fixing screws and plugs.

Colors: Anodized Aluminum, Powder Coated Yellow



Connector clips - side to side

For joining sections of matting side to side. Supplied in packs of 10.



9/16" x 8'2"
(14mm x 2.5m)

Snap Track

2 part snap track can be welded to join rolls end to end or side to side for large area covering.

Supplied with cold welding paste.

Color: Dark Gray

Fronrunner Entry Low Profile

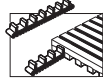


3/8" x 2" x 33'
(10mm x 50mm x 10.1m)

2" PVC edging strip

Supplied in rolls of 33' (10.1m) length with cold welding paste.

Colors: Black, Dark Gray



Connector clips - side to side

For joining sections of matting side to side. Supplied in packs of 10.



13/32" x 5'11"
(10.5mm x 1.8m)

Snap Track - Low Profile

2 part low profile snap track can be welded to join rolls end to end or side to side for large area covering.

Supplied with cold welding paste.

Fronrunner Plus Low Profile

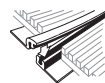


3/8" x 2" x 33'
(10mm x 50mm x 10.1m)

2" PVC edging strip

Supplied in rolls of 33' (10.1m) length with cold welding paste.

Colors: Black, Dark Gray



13/32" x 5'11"
(10.5mm x 1.8m)

Snap Track - Low Profile

2 part low profile snap track can be welded to join rolls end to end or side to side for large area covering.

Supplied with cold welding paste.

Color: Dark Gray

Fronrunner Brush & Fronrunner Brush Wide



9/16" x 2 1/2" x 33'
(14mm x 60mm x 10.1m)

2 1/2" PVC edging strip

Supplied in rolls of 33' (10.1m) length with cold welding paste.

Colors: Black, Dark Gray



9/16" x 3 3/4" x 33'
(14mm x 100mm x 10.1m)

3 3/4" PVC edging strip

Supplied in rolls of 33' (10.1m) length with cold welding paste.

Colors: Black, Dark Gray, Yellow



5/8" x 1 13/16" x 6'6"
(15mm x 45mm x 2m)

Aluminum edging strip

Supplied in sections of 6'6" (2m) length with fixing screws and plugs.

Colors: Anodized Aluminum, Powder Coated Yellow



9/16" x 8'2"
(14mm x 2.5m)

Snap Track

2 part snap track can be welded to join rolls end to end or side to side for large area covering.

Supplied with cold welding paste.

Color: Dark Gray

Fronrunner XT



9/16" x 2 1/2" x 33'
(14mm x 60mm x 10.1m)

2 1/2" PVC edging strip

Supplied in rolls of 33' (10.1m) length with cold welding paste.

Colors: Black, Dark Gray

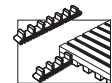


5/8" x 1 13/16" x 6'6"
(15mm x 45mm x 2m)

Aluminum edging strip

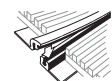
Supplied in sections of 6'6" (2m) length with fixing screws and plugs.

Colors: Anodized Aluminum, Powder Coated Yellow



Connector clips - side to side

For joining sections of matting side to side. Supplied in packs of 10.



9/16" x 8'2"
(14mm x 2.5m)

Snap Track

2 part snap track can be welded to join rolls end to end or side to side for large area covering.

Supplied with cold welding paste.

Color: Dark Gray

Fronrunner SB & Fronrunner SB+



1/4" x 1" x 197'
(6.5mm x 30mm x 60m)

1" PVC edging strip

Supplied in rolls of 197' (60m) length with cold welding paste.

Colors: Black, Dark Gray



1/8" x 11'9"
(3.5mm x 3.6m)

T Joining Strip

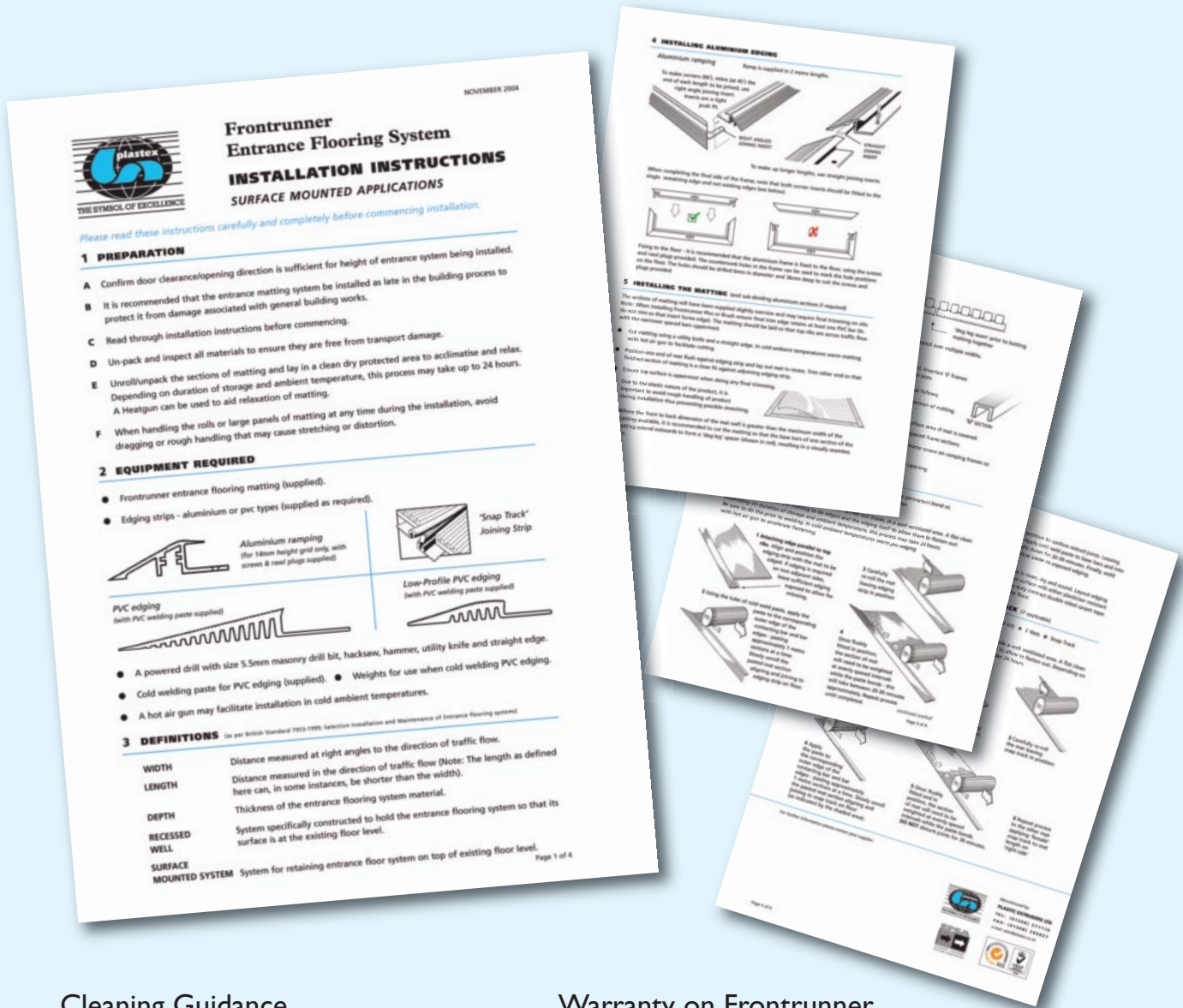
1 part strip can be welded to join rolls end to end or side to side for larger area covering.

Color: Black

Surface Mounted Installation Instructions

Easy to follow instructions

Fitting PVC or aluminium ramped ancillaries and connector clips is quick and simple.



Cleaning Guidance

Fronrunner is also very easy to clean within normal cleaning schedules and doesn't require any specialized cleaning products.

Full cleaning instructions are available at www.plastexmatting.com/fronrunner-cleaning.html

Warranty on Fronrunner Entrance Flooring Systems

Fronrunner entrance flooring systems are very durable and many of the installations shown in this brochure have been in place for over ten years and are still performing with admirable style and service. This applies to large retail centers with all the heavy consumer traffic, where we confidently offer a 2-4 year warranty on all of the Fronrunner range.

Full warranty statement:
www.plastexmatting.com/warranty-policy.html

Multi-Purpose

FLOOR COVERINGS

- ◆ Introduction 63
- ◆ International Applications 64 - 65

SHEET FLOORING

- ◆ Flexi Dot 66
 - Flexi Dot Extra 66
 - Eco Dot 66
 - Eco Dot Extra 66
- ◆ Flexi Coin 67
 - Eco Coin 67
- ◆ Flexi Button 68
- ◆ Flexi Tred 69
- ◆ Flexi Line 70
- ◆ Flexi Ridge 71

TILES

- ◆ Plastex Chex 72
- ◆ Plastex Lok 73
- ◆ Plastex Grid 74
- ◆ Ancillaries 75



www.plastexmatting.com

Why multi-purpose floor coverings?

When you need form and function for larger floor areas the Plastex Multi-Purpose range provides high quality, comfort, safety, style and cleanliness as well as protection for floor, bench and components.

2 formats - large one piece covering by standard rolls up to 5' (1.5m) x 82' (25m) or interlocking tiles.

How to choose your multi-purpose mat

Color & Design

Often in larger areas color is an important factor. After all floors usually make up the largest area of single color in any interior design. Plastex has an extensive range of colors and patterns to choose from.

Surface pattern is important for several reasons...

Dot Pattern

As a rule of thumb the higher the dot the greater the grip, the smaller the dot the easier it is to clean and for small wheels to cross. Also design perspective comes into play – big dots make rooms look smaller; small dots make rooms look bigger. We produce mats with three sizes from big to small - coin, button and dot.

DOT PATTERN						
PRODUCT	PAGE	DOT SIZE	COLORS	THICKNESS	SPILLAGE	USAGE
Flexi Dot	66		2			Contemporary small dot pattern.
Flexi Dot Extra	66		2			Contemporary small dot pattern for heavier traffic areas.
Eco Dot	66		2			Contemporary small dot eco-friendly product.
Eco Dot Extra	66		2			Ecological pattern for heavier traffic areas.
Flexi Coin	67		1			Large stud vinyl alternative.
Eco Coin	67		2			Large stud vinyl eco-friendly product.
Flexi Button	68		2			Heavy duty deep stud flooring.

Ridge Pattern

Striped surfaces provide a bit of extra comfort and can deal better with spillage. We have grooved stripe products for extra grip.

RIDGE PATTERN						
PRODUCT	PAGE	PATTERN SIZE	COLORS	THICKNESS	SPILLAGE	USAGE
Flexi Tred	69		4			Heavy duty ribbed matting suitable for use where electrical safety is required.
Flexi Line	70		3			Fine ribbed matting designed for areas alongside or on top of benches.
Flexi Ridge	71		2			Hard wearing ribbed matting with high component and noise protection.

Open Grid Pattern

For areas with the likelihood of heavy spillage our Plastex Grid and Plastex Lok products provide comfort and support for both chemical and non-chemical environments.

GRID PATTERN						
PRODUCT	PAGE	GRID	COLORS	THICKNESS	SPILLAGE	USAGE
Plastex Grid	74	Open	5	1" (25mm)		Heavy duty rigid grid tiling for where large volumes of liquid require efficient dispersal.
Plastex Grid	74	Closed	2	1" (25mm)		Heavy duty rigid grid solid surface tiling for coverage of large areas.
Plastex Lok	73	Open	1	5/8" (16mm)		Heavy duty open grid 100% recycled PVC tiles.
Plastex Chex	72	Closed	1	4/9" (14mm)		Heavy duty solid surface 100% recycled PVC tiles.

Durability

The thicker the mat the longer it wears - so take the amount of traffic into account. Of course the thicker mats also provide more protection for floors, benches and components.

Environment

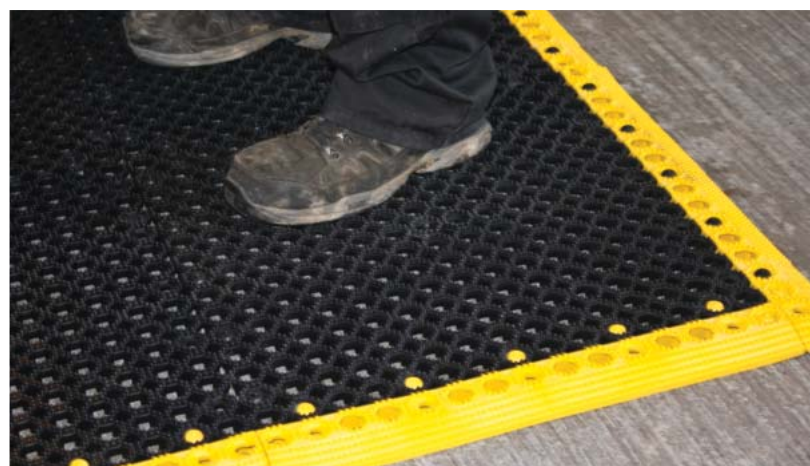
All the above products are 100% recyclable and made from 100% DINP (REACH compliant) PVC, including recycled versions ("Eco" products, Plastex Lok and Plastex Chex).

Proposition 65 - Plastex conforms with The State of California Safe Drinking Water and Toxic Enforcement Act of 1986, also known as Proposition 65 (Prop 65).

DIVERSITY, FUNCTION



A N D P R O T E C T I O N



A L L R E A S O N S

FLEXI DOT

Contemporary small dot pattern

A light duty, attractive vinyl in a choice of colors with a dot pattern as a main feature.

More than just attractive, but also highly functional, Flexi Dot performs well and the roll format enables large area coverage with a minimum of seams/joints.



BENEFITS

- Good slip resistance
- Chemical, oil and acid resistant
- Easy to cut on site, contours to uneven surfaces
- Quick to install
- Environmentally-friendly
- Fire resistant

FEATURES

- Dot pattern surface
- Vinyl sheets in roll format
- Made from flexible PVC
- Supplied in convenient roll formats
- 'Eco' version manufactured from reprocessed factory material
- EN 13501 - 1 : 2007- Bfl - S1

Eco Dot

Providing an eco-friendly and economical alternative, Eco Dot is manufactured to the same specification but using recycled factory materials only.

Flexi Dot Extra & Eco Dot Extra

Thicker 3/32" (2.5mm) versions for heavier traffic areas.

STANDARD COLORS

FLEXI DOT



RED BLUE

ECO DOT



DARK GRAY BLACK

FLEXI DOT EXTRA



RED BLUE

ECO DOT EXTRA



DARK GRAY BLACK

STANDARD SIZES

PRODUCT	HEIGHT	STANDARD ROLL OPTION
Flexi Dot	1/16" (1.6mm)	3'2" x 82' (0.98 x 25m)
Eco Dot	1/16" (1.6mm)	3'2" x 82' (0.98 x 25m)

PRODUCT	HEIGHT	STANDARD ROLL OPTION
Flexi Dot Extra	3/32" (2.5mm)	3'2" x 65' 7" (0.98 x 20m)
Eco Dot Extra	3/32" (2.5mm)	3'2" x 65' 7" (0.98 x 20m)

FLEXI COIN

The large stud vinyl alternative

Attractive large stud vinyl floor covering also available in 'eco' version.

Large areas can be covered economically using just one piece of material in 3'2" (98cm) or 5' (150cm) widths. This multi-purpose product is a high quality alternative to conventional floorings in many light duty applications.



BENEFITS

- Good slip resistance
- Chemical, oil and acid resistant
- Easy to cut on site, contours to uneven surfaces
- Quick to install
- Environmentally-friendly
- Fire resistant

FEATURES

- Large stud design
- Vinyl sheets in roll format
- Made from flexible PVC
- Supplied in convenient roll formats
- 'Eco' version manufactured from reprocessed recycled material
- EN 13501 - 1 : 2007- Bfl - S1

Eco Coin

The eco-friendly and economical version of Flexi Coin manufactured from 100% recycled material.

STANDARD COLORS

FLEXI COIN



BLUE

ECO COIN



DARK GRAY

BLACK

STANDARD SIZES

PRODUCT	HEIGHT	STANDARD ROLL OPTIONS	
Flexi Coin	1/16" (1.6mm)	3'2" x 82' (0.98 x 25m)	5' x 82' (1.5 x 25m)
Eco Coin	1/16" (1.6mm)	3'2" x 82' (0.98 x 25m)	5' x 82' (1.5 x 25m)

FLEXI BUTTON

Heavy duty deep stud floor covering

A multi-purpose, heavy duty sheet vinyl for commercial and medium duty industrial applications.

The distinctive deep stud design is not only an attractive feature but a practical one. Flexi Button is easy to clean, slip resistant, chemical, oil and acid resistant and formulated to cope with light spillages.



BENEFITS

- Good slip resistance and hardwearing
- Chemical, oil and acid resistant
- Easy to cut on site, contours to uneven surfaces
- Quick to install
- Fire resistant

FEATURES

- Deep stud design
- Vinyl sheets in roll format
- Made from flexible PVC
- Supplied in convenient roll formats
- EN 13501 - I : 2007- Bfl - S1

STANDARD COLORS



BLUE



DARK GRAY



BLACK

STANDARD SIZES

PRODUCT	HEIGHT	STANDARD ROLL OPTION
Flexi Button	1/8" (3.3mm)	3'2" x 65'7" (0.98 x 20m)



FLEXI TRED

Heavy duty ribbed matting

Providing electrical resistance and enhanced safety for demanding applications.

A durable, chemical resistant sheet vinyl with a textured broad rib surface for enhanced safety. Flexi Tred insulates from the dangers of electric shock and meets DIN/EN 60243-1 with a breakdown voltage of 27kV.



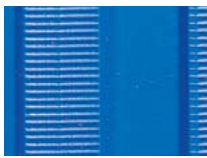
BENEFITS

- Good slip and wear resistance
- Insulates from electric shock
- Chemical, oil and acid resistant
- Easy to cut on site, contours to uneven surfaces
- Quick to install
- Fire resistant

FEATURES

- Textured broad rib surface
- Breakdown voltage of 27kV
- Vinyl sheets in roll format
- Made from flexible PVC
- Supplied in convenient roll formats
- EN 13501 - I : 2007- Cl - SI

STANDARD COLORS



BLUE



BROWN



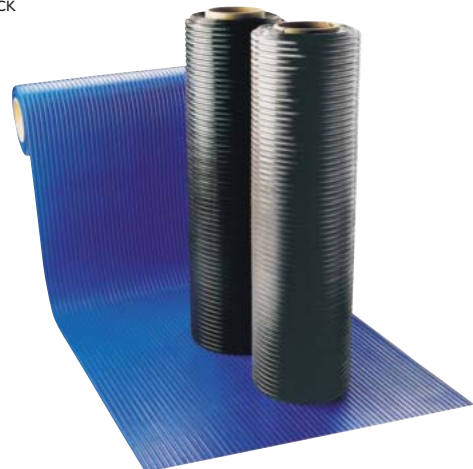
LIGHT GRAY



BLACK

STANDARD SIZES

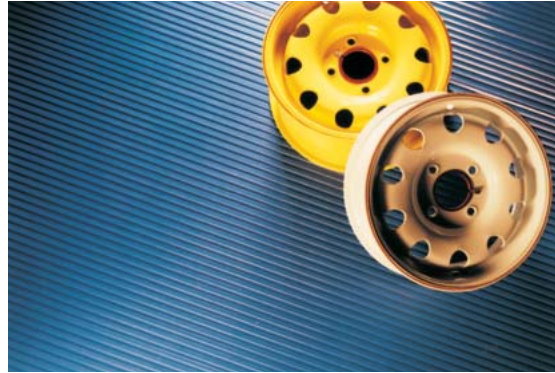
PRODUCT	HEIGHT	STANDARD ROLL OPTION
Flexi Tred	5/32" (4.0)	3'3" x 33' (1 x 10m)



Fine ribbed matting

Fluted surface resists oils, chemicals and acids.

The practical alternative to conventional rubber runners, Flexi Line is a fine ribbed vinyl matting designed for areas alongside or on top of benches. Flexi Line has a slip resistant fluted surface and dense composition to reduce the impact of noise and/or vibration.



BENEFITS

- Good slip resistance
- Chemical, oil and acid resistant
- Easy to cut on site, contours to uneven surfaces
- Quick to install
- Fire resistant

FEATURES

- Fine ribbed surface
- Vinyl sheets in roll format
- Made from flexible PVC
- Supplied in convenient roll formats
- EN 13501 - I : 2007- Bfl - S1

STANDARD COLORS



RED



LIGHT GRAY



BLACK

STANDARD SIZES

PRODUCT	HEIGHT	STANDARD ROLL OPTION
Flexi Line	5/64" (2mm)	3'3" x 82' (1 x 25m)



FLEXI RIDGE

Hard wearing ribbed matting

For component protection and dispersion of light spillages.

Scuff resistant flooring or bench top matting with high component and noise protection featuring easy to clean ridges to enhance resilience and disperse light spillages, in a one piece continuous roll.



BENEFITS

- Good slip and wear resistance
- Chemical, oil and acid resistant
- Easy to cut on site, contours to uneven surfaces
- Quick to install
- Fire resistant

FEATURES

- Ribbed surface
- Vinyl sheets in roll format
- Made from flexible PVC
- Supplied in convenient roll formats
- EN 13501 - I : 2007- Bfl - S1

STANDARD COLORS



GREEN



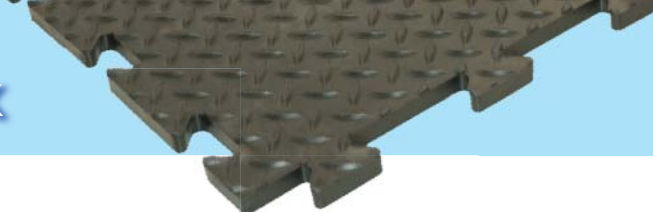
DARK GRAY



STANDARD SIZES

PRODUCT	HEIGHT	STANDARD ROLL OPTION
Flexi Ridge	7/16" (2.8mm)	3'3" x 65'7" (1 x 20m)

PLASTEX CHEX



100% recycled heavy duty checker plate PVC tiles

Plastex Chex is a hard wearing tiling system, delivering long life and value for investment.

It can be used as a temporary or permanent flooring solution for coverage of large areas in the workplace, such as work stations, finishing/assembly areas, laboratories, localized workcells and machine shops.

Plastex Chex solid surface absorbs shock and noise as well as being resistant to chemicals and extreme temperatures.



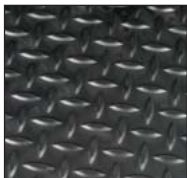
BENEFITS

- Slip resistant and hard wearing
- Insulating and chemical, oil and acid resistant
- Quick to install
- Environmentally-friendly
- REACH compliant
- Finished areas

FEATURES

- Checker plate surface
- Non-porous PVC (impermeable to fluids)
- Interlocking jigsaw tiles
- Made from 100% recycled material
- Made with certified recycled material
- PVC ramped edging

STANDARD COLOR



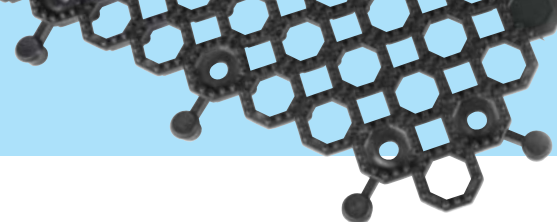
BLACK



STANDARD SIZES

PRODUCT	HEIGHT	STANDARD TILE SIZE
Plastex Chex	9/16" (14mm)	1'8" x 1'8" (0.5 x 0.5m)

Available in packs of 16 tiles



100% recycled heavy duty open grid PVC tiles

Plastex Lok is a hard wearing open grid tiling system, delivering long life and value for investment.

It can be used as a temporary or permanent flooring solution for coverage of large areas in the workplace with the likelihood of heavy spillage, such as work stations, finishing/assembly areas, laboratories, localized work cells and machine shops.

Plastex Lok's pimpled open grid surface guarantees excellent slip resistance (DIN 51130 R12) and, at the same time, facilitates drainage (DIN 51130 V10) and soil removal.



BENEFITS

- Certified slip resistance **DIN 51130:R12**
- Excellent drainage **DIN 51130:V10**
- Chemical, oil and acid resistant
- Quick to install
- Environmentally-friendly
- Easy to cut on site, contours to uneven surfaces
- Finished areas

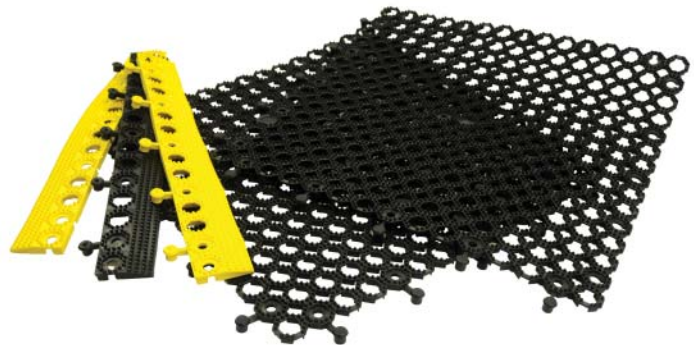
FEATURES

- Pimpled surface
- Raised construction
- Non-porous PVC (impermeable to fluids)
- Interlocking tiles
- Made from 100% recycled material
- Made from flexible PVC
- PVC ramped edging

STANDARD COLOR



BLACK



STANDARD SIZES

PRODUCT	HEIGHT	STANDARD TILE SIZE
Plastex Lok	5/8" (16mm)	1'8" x 1'8" (0.5 x 0.5m)

Available in packs of 16 tiles

PLASTEX GRID

Heavy duty rigid grid tiling

A versatile flooring solution in multiple industrial applications.

Rigid polyethylene grid tiles with a secure, quick and easy "lock-fit" connection, Plastex Grid provides a raised floor surface standing 1" (25mm) above ground.



BENEFITS

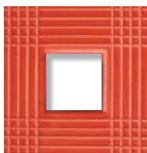
- Open grid or solid grid design
- Good slip resistance
- Resistant to detergents, industrial chemicals and acids
- 1" (25mm) high surface
- Effective coverage of large areas

FEATURES

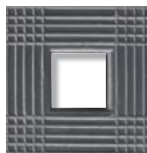
- Open grid for removal of large volumes of liquid
- Textured surface
- Made from rigid polyethylene
- Withstands weights of up to 10,240 lbs/ft²
- Secure 'lock fit' connection

STANDARD COLORS

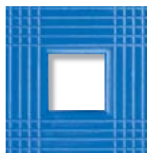
PLASTEX GRID OPEN



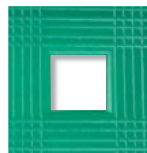
RED



DARK GRAY



BLUE



GREEN



WHITE

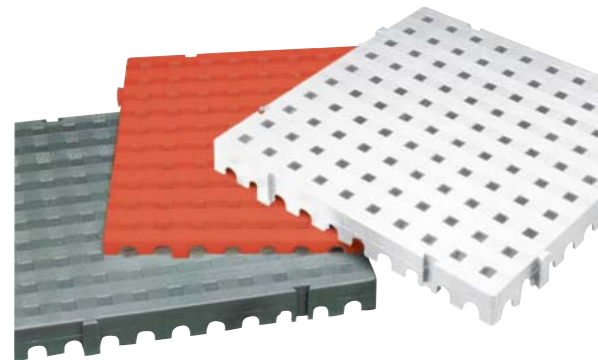
PLASTEX GRID CLOSED



RED

STANDARD SIZES

PRODUCT	HEIGHT	STANDARD TILE SIZE	WEIGHT
Plastex Grid Open	1" (25mm)	1' 8" x 1' 8" (50 x 50cm)	0.66 lbs/sft (3.6 kg/m ²)
Plastex Grid Closed	1" (25mm)	1' 8" x 1' 8" (50 x 50cm)	0.80 lbs/sft (4.4 kg/m ²)



Matting and tiling floor covering applications & ancillaries

One Piece Covering

If you have a large floor area and are looking for a one-piece covering or runner, look no further than our multi-purpose flooring range.

We can manufacture a standard width roll to any length you specify.

The only thing to bear in mind, when it comes to fitting for larger areas, is that weight may be an issue; for example a 100' (30m) roll of Flexi Tred weighs about 275lbs (125kg).



Loose Lay or fixed

Plastex multi-purpose flooring also offers you the versatility of choosing between loose lay or permanent fixing. Loose lay is the perfect instant solution to dirty or unfinished floors.

For the longer-term, our range of colors and surface patterns allows you to include our multi-purpose matting as fixed design feature.

You'll find the matting can be easily cut and shaped on site, and once stuck down, is an elegant and long lasting design solution.



Plastex Grid



1" x 2 3/4" x 6'6"
(25mm x 66mm x 2m)

2 3/4" Aluminum strip

Supplied in sections of 6'6" (2m) length with fixing screws and plugs

Color: Anodized Aluminum

Plastex Chex



1/2" x 2" x 1'8"
(12mm x 50mm x 500mm)

2" PVC edging strip

Supplied in 1'8" (50cm) lengths.

Colors: Black, Yellow

Plastex Lok



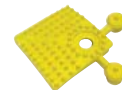
1/2" x 2" x 1'8"
(12mm x 50mm x 500mm)

2" PVC edging strip

Male and female strips available.

Supplied in 1'8" lengths (50cm).

Colors: Black, Yellow



1/2" x 2" x 2"
(12mm x 50mm x 50mm)

2" PVC edge corner

Colors: Black, Yellow

Connector clips - end to end



For joining two ends of the edging together. One lug is supplied for every two pieces of edging in the relevant color.

Colors: Black, Yellow

Specialist

APPLICATION MATTING

Why specialist matting?

With over 50 years of experience, customers have often requested our knowledge to research and develop matting products to meet specific needs. This section showcases a few of the most common "special" matting solutions we have developed to meet specialized market and application specifications.

Aquatic Attraction Matting - p77



PillogriD - large space hollow tube for maximum cushioning and drainage.

Animal Cage Matting - p81



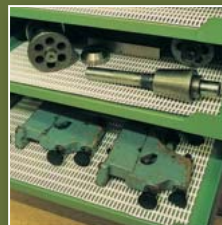
Heron Vinyl Duckboard - smooth yet hardwearing with good cushioning & drainage properties. Ideal in veterinary applications.

Roof Walkway Matting - p78-79



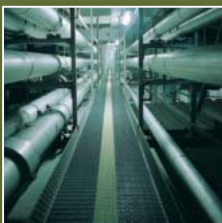
Crossgrip PVC and Crossgrip TPO - slip resistant and self draining high level mats for safe access in all weathers and roof membrane protection.

Cushion Matting - p82



Pillomat - lightweight, hygienic cushioned matting suitable for bench tops, working surfaces and shelving. Impact, chemical, oil and acid resistant.

Escape Route Matting - p80



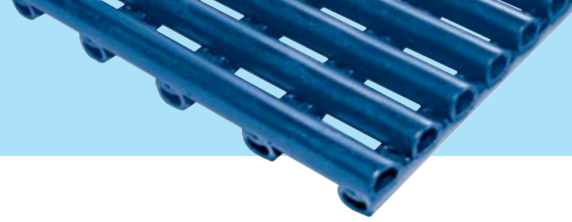
Heronair Photoluminescent - escape route matting with a light emitting strip to mark escape routes if lighting fails.

ESD Matting - p83



Zed Land ESD - superior quality, patented foam matting for standing areas in static sensitive environments.

P I L L O G R I D



Cushioning matting for aquatic applications

A large open grid and soft vinyl with hollow profile combining phenomenal drainage with a soft landing.

Designed to be placed over metal grates at the back and front of surfing machines, PillogriD matting was specifically developed to provide excellent drainage and superior cushioning for aquatic safety.

Large roll format further adds to safety by removing the need for joints in action areas.

This matting can be supplied in factory welded panels for quick and easy installation.



BENEFITS

- Soft landing
- High volume drainage
- Highly resistant
- Easy to cut on site, contours to uneven surfaces
- Quick to install
- UV resistant
- Hard wearing
- Hygienic

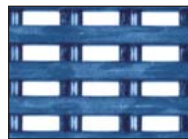
FEATURES

- Hollow tube construction
- Large open grid format
- "D" profile for maximum weld strength
- Made from flexible PVC
- Supplied in rolls or fabricated panels
- Can be used indoor or outdoor
- All welded construction
- All flexible PVC construction

STANDARD COLORS



BLACK



BLUE



STANDARD SIZES

PRODUCT	HEIGHT	STANDARD ROLL OPTIONS*			
PillogriD	3/4" (20mm)	2' x 16'6" (0.6 x 5m)	3' x 16'6" (0.91 x 5m)	2' x 33' (0.6 x 10m)	3' x 33' (0.91 x 10m)

*Contact us for custom dimensions.

CROSSGRIP PVC

Roof walkway matting in PVC

A two layer roof walkway matting that protects the roof membrane and provides safe access for general maintenance works. Compatible with various roof surfaces.

Made from non-porous PVC with cross directional top ribs and a "diamond cut" surface for a firm underfoot grip, Crossgrip PVC carries a 0.6/0.5 slip resistant rating under ASTM 1677.

Impermeable in all weathers, Crossgrip is highly specialized matting system for flat roofs, gantries and high level walkways. When laid flat, it will remain stable in winds up to 60 mph-96 km/h*.



BENEFITS

Certified slip resistance **DIN 51130:R10** **ASTM 1677: 1.0/0.9**

Excellent drainage **DIN 51130:V10**

Roof membrane protection

Compatible with PVC roof membranes

Quick to install

Contours to the roof structure

Loose lay, no fixing required

Long life

FEATURES

Diamond cut pattern

Two layer construction

Durable one piece construction

PVC construction

Supplied in 33' (10m) rolls

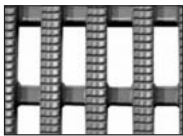
Made from flexible PVC

Stable in winds up to 60mph (96km/h)*

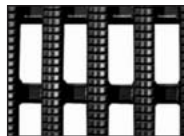
UV resistant

* Tests at the University of Hertfordshire, School of Aerospace, Automotive & Design Engineering showed Crossgrip PVC when laid flat on a stable platform remained in position for wind speeds of 94mph (150km/h).

STANDARD COLORS



LIGHT GRAY



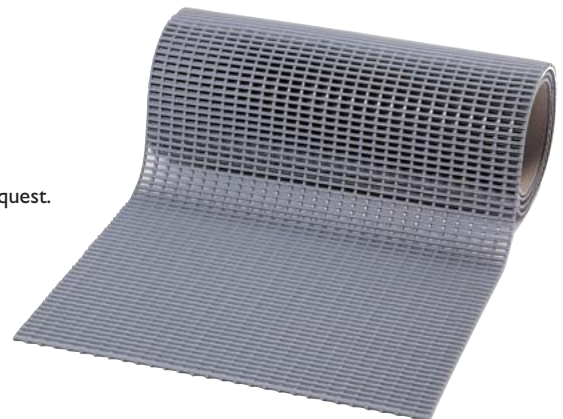
BLACK

Other colors available on request.

STANDARD SIZES

PRODUCT	HEIGHT	STANDARD ROLL OPTIONS**		
Crossgrip PVC	9/16" (14mm)	2' x 33' (0.6 x 10m)	2' x 33' (0.91 x 10m)	4' x 33' (1.22 x 10m)

**Contact us for custom dimensions.



CROSSGRIP TPO

Roof walkway matting in TPO

A roof walkway matting compatible with TPO and EPDM roofs.

Crossgrip TPO gives continuous all weather protection to roof membranes from dropped tools, heavy foot traffic and maintenance equipment.

Designed for use on flat roofs, Crossgrip TPO's 1/2" (12mm) one piece welded open grid design offers permanent slip resistance, even in areas where water may pool.



BENEFITS

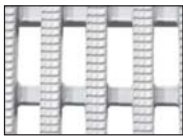
- Certified slip resistance **DIN 51130: R9**
- Excellent drainage **DIN 51130: V10**
- Fire resistant
- Roof membrane protection
- Compatible with TPO and EPDM roof membranes
- Quick to install
- Contours to the roof structure
- Loose lay, no fixing required
- Long life

FEATURES

- Embossed surface
- Two layer construction
- EN 13501-1 : 2007- Dfl-S1**
- Durable welded construction
- TPO construction
- Supplied in 33' (10m) rolls
- Made from flexible TPO
- Stable in winds up to 55mph (89km/h)*
- UV resistant

* Tests at the University of Hertfordshire, School of Aerospace, Automotive & Design Engineering showed Crossgrip TPO when laid flat on a stable platform remained in position for wind speeds of 88mph (142km/h).

STANDARD COLOR



WHITE

STANDARD SIZES

PRODUCT	HEIGHT	STANDARD ROLL OPTIONS**
Crossgrip TPO	1/2" (12mm)	2'6" x 33' (0.75 x 10m)

**Contact us for custom dimensions.



HERONAIR PHOTOLUMINESCENT

Escape route matting with glow in the dark properties

Photoluminescent center strip marks escape routes after ambient light failure.

Manufactured to the same specification as Heronair and incorporating a 10cm photoluminescent strip, this light emitting band marks escape routes if lighting fails.

Heronair Photoluminescent is tested to DIN 67510 Part 1 after glow properties (33.9/4.4-588/w-k).

Especially suitable for bar grating or similar type surfaces.



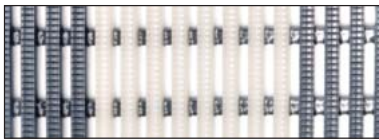
BENEFITS

- Certified slip resistance **DIN 51130: R11 - ASTM 1677: 0.6/0.6**
- Excellent drainage **DIN 51130: V10**
- Light to carry
- Indicates escape route after ambient light failure
- Loose lay, contours to uneven surfaces
- Quick to install

FEATURES

- Etched pattern
- Two layer construction
- Tubular construction
- Photoluminescent light emitting band
- Made from flexible PVC
- Supplied in 33' (10m) rolls

STANDARD COLOR



BLACK WITH PHOTOLUMINESCENT CENTRE STRIP

Other colors available on request.



STANDARD SIZES

PRODUCT	HEIGHT	STANDARD ROLL OPTIONS*	
Heronair	3/8" (10mm)	2' x 33' (0.6 x 10m)	3' x 33' (0.9 x 10m)

*Contact us for custom dimensions.

HERON VINYL DUCKBOARD



Animal cage matting

A top performer where comfort and cleanliness count.

Heron Vinyl Duckboard (HVD) is a simple to cut and fit vinyl matting with a particularly smooth upper surface, which provides an extremely high level of cushioning and drainage, while also being hygienic, comfortable and easy to clean.

As a result of this special combination of benefits, Heron Vinyl Duckboard is ideal for lining kennel cages and is widely used in veterinary clinics and kennels, research facilities, and zoos.



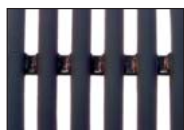
BENEFITS

- Warm and comfortable
- High drainage
- Easy to clean
- Easy to cut on site, contours to uneven surfaces
- Quick to install

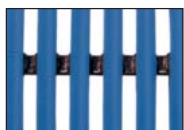
FEATURES

- Extra smooth surface
- Two layer construction
- Non-toxic and inert
- Made from flexible PVC
- Supplied in 33' (10m) rolls

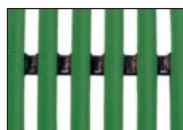
STANDARD COLORS



BLACK



BLUE



GREEN

Other colors available on request.

STANDARD SIZES

PRODUCT	HEIGHT	STANDARD ROLL OPTIONS*		
HVD	17/32" (13.5mm)	2' x 33' (0.6 x 10m)	3' x 33' (0.91 x 10m)	4' x 33' (1.22 x 10m)

*Contact us for custom dimensions.



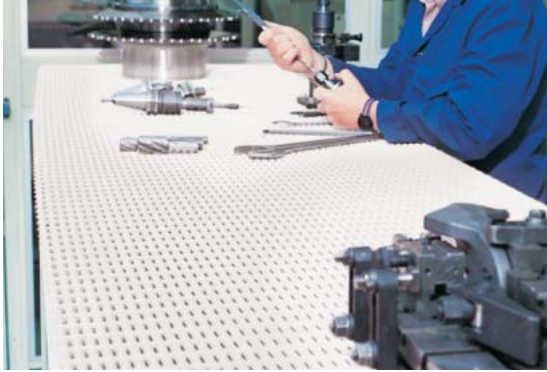
P I L L O M A T

Cushion matting

Designed for the covering of work and storage surfaces. A bonus wherever delicate components and tools are stored or handled.

Pillomat is an all-purpose cushioned matting of tubular construction with air-filled bubble sections providing a lightweight working surface matting solution, which is ideal for a wide variety of industries - from marine compartments to general manufacturing where it is widely used on bench tops.

It is also extremely effective as a lining for shelving and compartments.



BENEFITS

- Component protection
- Good drainage and fall through
- Hygienic and easy to clean
- Easy to cut on site, contours to uneven surfaces
- Quick to install
- Fire resistant

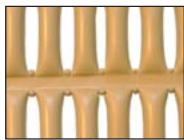
FEATURES

- Extra smooth surface and tubular construction
- Open grid
- Non-porous PVC (impermeable to fluids)
- Made from flexible PVC
- Supplied in 33' (10m) rolls
- Certified EN 13501 - 1 : 2007- Bfl - S1

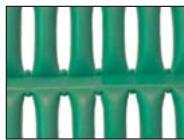
STANDARD COLOR



MAHOGANY



BEIGE



GREEN



WHITE

STANDARD SIZES

PRODUCT	HEIGHT	STANDARD ROLL OPTIONS*	
Pillomat	5/16" (8mm)	2' x 33' (0.6 x 10m)	3' x 33' (0.91 x 10m)

*Contact us for custom dimensions.



Patented foam construction with ESD properties

Made from high molecular density foam with 'bounce' properties up to 4 times as effective as standard foam matting for improved comfort and productivity.

Zed Land will lend comfort and improve productivity. Dropped components will also be protected from accidental damage. Zed Land will not deaden and shows minimal wear after 2000 taber abrador cycles in test conditions to ASTM D4060.



BENEFITS

Certified wear resistance **ASTM 4060: $\leq 1.5\%$ ***

Good slip resistance

Excellent standing fatigue reducing properties will boost productivity

Easy to cut to shape and quick to install

Provides underfoot comfort in static sensitive environments

FEATURES

Minimal wear standing foam which will not deaden

Embossed pebble surface

Patented vinyl foam construction with superior resilience

Supplied in 60' (18m) rolls or standard modules

Electrostatic dissipative (ESD) properties
Certified **ASTM D257: 10^9**

STANDARD COLORS

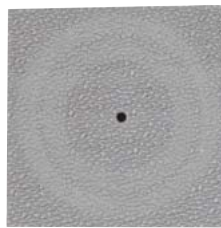


BLUE



DARK GRAY

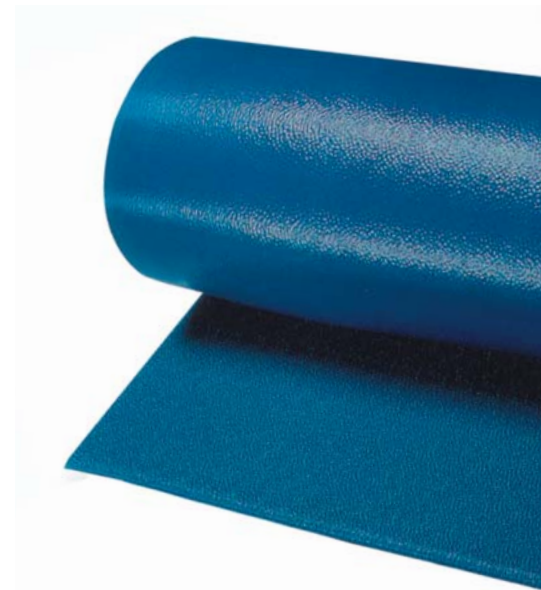
Other colors available on request.



*ASTM 4060 @ 2000 cycles

STANDARD SIZES

PRODUCT	HEIGHT	STANDARD ROLL OPTION	STANDARD MODULE OPTIONS		
Zed Land	3/8" (9mm)	3' x 60' (0.91 x 18m)	2' x 3' (0.6 x 0.91m)	3' x 5' (0.91 x 1.5m)	3' x 10' (0.91 x 3m)



Ancillaries for specialist application matting

Crossgrip PVC



9/16" x 2 1/2" x 33'
(14mm x 60mm x 10.1m)

2 1/2" PVC edging strip

Supplied in rolls of 33' (10.1m) length with cold welding paste.

Colors: Black, Dark Gray



9/16" x 3 3/4" x 33'
(14mm x 100mm x 10.1m)

3 3/4" PVC edging strip

Supplied in rolls of 33' (10.1m) length with cold welding paste.

Colors: Black, Dark Gray, Yellow

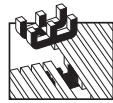


5/8" x 1 13/16" x 6'6"
(15mm x 45mm x 2m)

Aluminum edging strip

Supplied in sections of 6'6" (2m) length with fixing screws and plugs.

Colors: Anodized Aluminum, Powder Coated Yellow



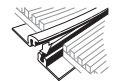
Connector clips - dual purpose

For joining sections of matting together side to side or end to end.
Supplied in packs of 10.



Connector clips - side to end

For joining sections of matting together side to end.
Supplied in packs of 10.



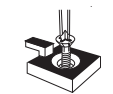
9/16" x 8'2"
(14mm x 2.5m)

Snap Track

2 part snap track can be welded to join rolls end to end or side to side for large area covering.

Supplied with cold welding paste.

Color: Dark Gray



Small floor hook

For securing sections of matting to floor.
Supplied in packs of 10 with screws and plugs.

HVD



9/16" x 2 1/2" x 33'
(14mm x 60mm x 10.1m)

2 1/2" PVC edging strip

Supplied in rolls of 33' (10.1m) length with cold welding paste.

Colors: Black, Dark Gray



9/16" x 3 3/4" x 33'
(14mm x 100mm x 10.1m)

3 3/4" PVC edging strip

Supplied in rolls of 33' (10.1m) length with cold welding paste.

Colors: Black, Dark Gray, Yellow

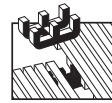


5/8" x 1 13/16" x 6'6"
(15mm x 45mm x 2m)

Aluminum edging strip

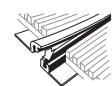
Supplied in sections of 6'6" (2m) length with fixing screws and plugs.

Colors: Anodized Aluminum, Powder Coated Yellow



Connector clips - dual purpose

For joining sections of matting together side to side or end to end.
Supplied in packs of 10.



9/16" x 8'2"
(14mm x 2.5m)

Snap Track

2 part snap track can be welded to join rolls end to end or side to side for large area covering.

Supplied with cold welding paste.

Color: Dark Gray



Small floor hook

For securing sections of matting to floor.
Supplied in packs of 10 with screws and plugs.



Large floor hook

For securing sections of matting to floor.
Supplied in packs of 10 with screws and plugs.

PillogriD



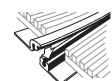
16' (5m) on the shorter of 2 dimensions x physical weight of panel @ 1.45 lb/sq.ft (7.1 kg/sq.m)

Custom size panels

Plastex can supply aquatic attraction manufacturers with prefabricated robot welded panels. The maximum dimension of these panels is 16' (5m) on the shorter of the length or width.

Consideration should also be given to handling and shipping of the overall weight of the fabricated panel. PillogriD weighs 7.1kg/sq.m (1.45lb/sq.ft).

Zed Land ESD



13/32" x 5'11"
(10.5mm x 1.8m)

Snap Track - Low Profile

2 part low profile snap track can be welded to join rolls end to end or side to side for large area covering.

Supplied with cold welding paste.

Color: Dark Gray



ESD Screw Fit Earthing Lead

Supplied in 14'9" (4.5m) lengths

Extensive know-how

When you purchase from Plastex, you can do so with the confidence of knowing we have been designing and manufacturing matting for a diverse range of uses for over 55 years.

We design and build our proprietary equipment used to manufacture our quality products.



**“tell us what you need
...and we'll make it”**

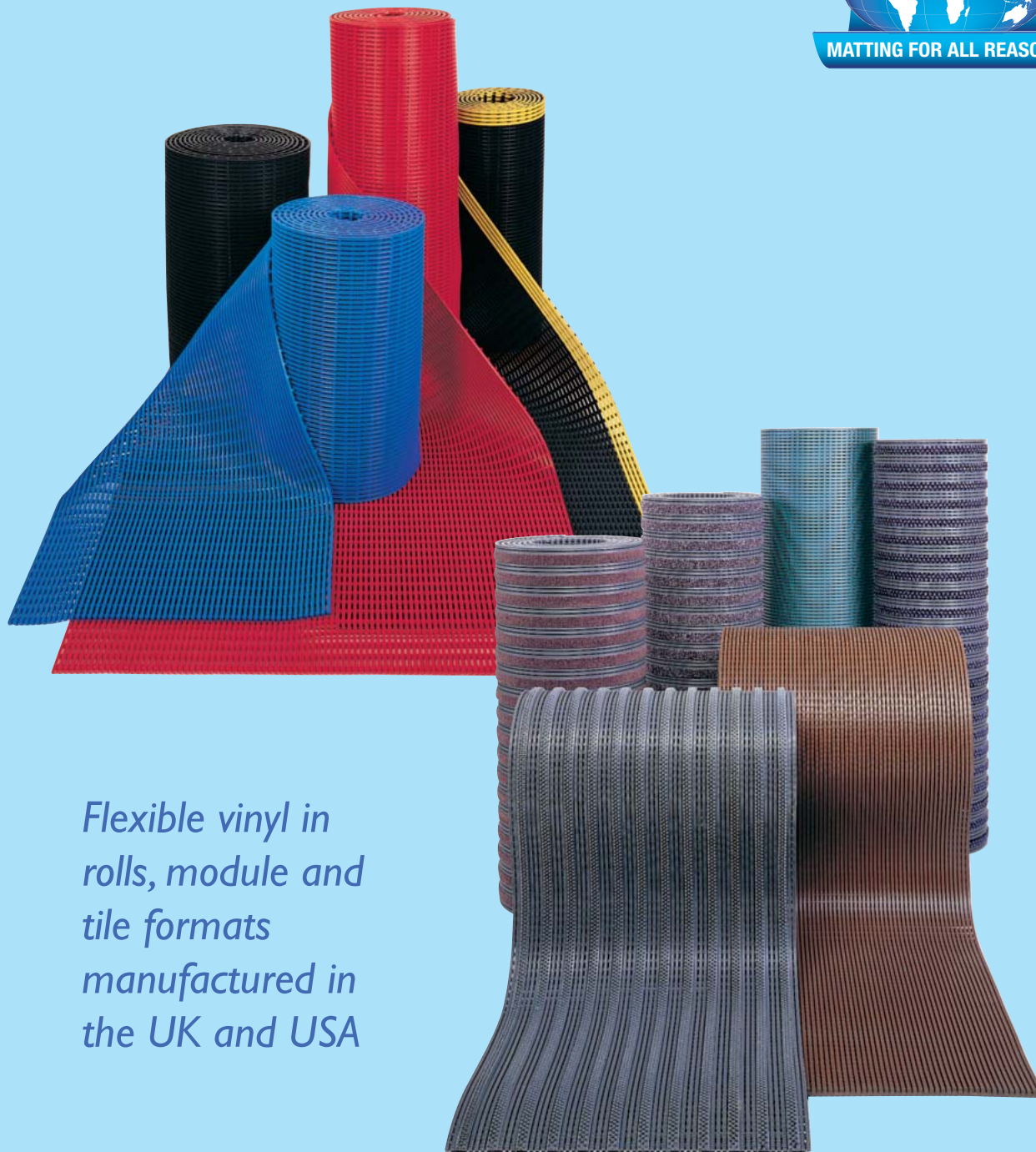
At Plastex, we realize not every matting need can be solved by an "off the rack" solution. As EU & USA manufacturers, we are here to help, by designing and manufacturing a product to your custom specification.

Full Manufacturer Warranty - Another good reason to choose Plastex

All Plastex flooring and matting products will give excellent and long service. In the unlikely event a Plastex product has a defect in workmanship, we offer a full refund or replacement warranty. The warranty periods vary depending on the product, please view full terms and details at www.plastexmatting.com/warranty-policy.html

Product Index

Crossgrip PVC	78
Crossgrip TPO	79
Eco Coin	67
Eco Dot	66
Eco Dot Extra	66
Firmagrip	15
Flexi Button	68
Flexi Coin	67
Flexi Dot	66
Flexi Dot Extra	66
Flexigrid	14
Flexi Line	70
Flexi Ridge	71
Flexi Tred	69
Floorline Water Polo	39
Floorline - Workplace	12
Floorline - Wetside	38
Fronrunner Brush	48
Fronrunner Brush Wide	49
Fronrunner Entry	46
Fronrunner Modules	56
Fronrunner Plus	50
Fronrunner Plus Insert Colours	52
Fronrunner Plus Logos	51
Fronrunner SB	54
Fronrunner SB+	55
Fronrunner XT	47
Heronair - Anti-fatigue	30
Heronair - Workplace	11
Heronair Photoluminescent	80
Herongripa	13
Heronrib	36
Herontile	37
HVD	81
PillogriD - Wetside	40
PillogriD - Specialist	77
Pillomat	82
Plastex Grid	74
Plastex Chex - Specialist	72
Plastex Chex - Workplace	16
Plastex Lok - Specialist	73
Plastex Lok - Workplace	17
Sparksafe	29
Trackgrip	18
Tuff Spun	23
Tuff Spun Deck	25
Tuff Spun Wear	24
Vynagrip	8
Vynagrip Modules	10
Vynagrip Plus	9
Zed Chex	28
Zed Land	26
Zed Land ESD	83
Zed Tred	27



*Flexible vinyl in
rolls, module and
tile formats
manufactured in
the UK and USA*



www.plastexmatting.com

Plastic Extruders Ltd.

Russell Gardens, Wickford,
Essex SS11 8DN, England

Tel: +44 (0) 1268 571116

Plastex Matting, Inc.

120 55th Street NE
Fort Payne, AL 35967 USA

Tel: +1 256 845 7725

