

Plastex

Matting for All Reasons

CI/SIB reference		
(43)	Tn6	
(47)	Tn6	
(71.3)	T	
JULY		2017



Workplace Slip Resistant Matting



Workplace Anti-fatigue Matting



Barefoot and Wetside Matting

Entrance Matting Systems



Multi-Purpose Floor Coverings



Specialist Application Matting



Plastic Extruders Ltd.



Our Mission *A Mat for All Reasons*

Our mission is to add to our distributors, and in turn their customers, profitability, safety, productivity and style by designing and manufacturing cutting edge matting for all work, education and leisure environments.

Our Values

Founded in 1962, Plastic Extruders Ltd (Plastex) are a second generation family run firm with long serving employees who take personal responsibility for maintaining the highest service standards and delivering the right solution on time and on budget.

Working with you to meet your needs

Through our design and innovation programme we work with our customers to constantly improve the form, function and cost effectiveness of our products.

So, though we have an extensive range suitable for most applications, we often fulfill individual customer needs by producing bespoke solutions. If you feel you may have one we would be pleased to hear from you. ☺



PETER O'SULLIVAN
Sales Director

DAVID O'SULLIVAN
Managing Director

Plastic Extruders Ltd UK & Plastex Matting Inc USA



Follow Plastex Matting on:

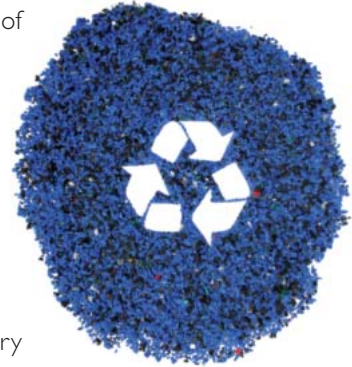




Plastex *and the environment*

As a global supplier with manufacturing plants in the UK and the USA, we constantly seek to reduce the environmental impact of our manufacturing processes.

For example, all our black matting is made with up to 100% post-industrial recycled material, but always with a minimum content of 30%.



To further minimise impact and avoid waste, we don't throw away any materials. All our factory trimmings and production process scrap are re-used in our own production. We do not re-sell any material to 3rd party reproprocessors.

In compliance with REACH regulation

The 2007 European Community REACH regulation (Registration, Evaluation, Authorisation and Restriction of Chemicals) gives manufacturers the responsibility of providing high level human and environmental protection from the use of chemicals in manufacturing.

Plastex does not use any substances currently included on the SVHC (Substances of Very High Concern) list under REACH, including "DEHP" Di(2-ethylhexyl) phthalate, also known as Di-octyl phthalate (DOP), plasticiser.

Further information can be found at www.plastexmatting.com.

Matting & flooring
manufactured in Europe
and the USA.

- Distributed worldwide



We make our matting, and that makes all the difference

When you purchase Plastex matting you're also investing in our extensive know-how that comes from over 55 years of designing, testing and manufacturing matting solutions for a diverse range of applications; knowledge we apply to make sure we find exactly the right solution for you.

This is important as an incorrectly specified product may actually increase risk. For example using a mat designed for bare feet in a workplace area could potentially increase slip accidents.

Talk to Us

To make sure you get the right mat for the right reasons, talk to us and our distributors.

Ensure you have been supplied
with a genuine Plastex product



To avoid plagiarism, today we emboss the trademarked names on the underside of our grid matting.

Testing
and Measurement

In our constant pursuit of excellence, we subject our products to the rigors of scientific testing. This includes external testing through international bodies, but we don't stop there. If an external test doesn't exist, we will commission a University research project. Plastex continually strives to ensure we maintain the highest standards expected by our customers worldwide.

Plastex

Three levels of service

Once we've established your exact need, we'll recommend the product that is right for you, from our three levels of service.

General Purpose

We have an extensive range of general purpose matting designed for various environments. So whether you're looking for comfort, slip resistance, soil removal or increased hygiene, we will have the product for you.

Specialist

We have also built up a full range of products for demanding specialist environments such as light and heavy industrial, as well as food preparation both big and small.

Bespoke

If we can't exactly meet your needs from our current range, we will design and manufacture a mat specifically for you.

Whatever your requirements we will put all our knowledge and care into delivering exactly the mat you need, on time and on budget - 'A mat for all reasons'.

To make it easier for you to choose the right mat for the right reason, we have divided our range into the sections below.

WORKPLACE
SLIP RESISTANT
4-19

WORKPLACE
ANTI-FATIGUE
20-31

BAREFOOT AND WETSID
SAFETY & COMFORT
32-41

ENTRANCE FLOORING SYSTEMS
42-61

MULTI PURPOSE FLOOR COVERINGS
62-75

SPECIALIST APPLICATION MATTING
76-84

Simply pick the heading that best suits your need, and then use the segmentation chart found at the front of each section to help you make your final product choice.



Workplace

SLIP RESISTANT MATTING

- ◆ Introduction 5
- ◆ International Applications 6
- ◆ Vynagrip 8
- ◆ Vynagrip Plus 9
- ◆ Vynagrip Modules 10
- ◆ Heronair 11
- ◆ Floorline 12
- ◆ Herongripa 13
- ◆ Flexigrid 14
- ◆ Firmagrip 15
- ◆ Plastex Chex 16
- ◆ Plastex Lok 17
- ◆ Track Grip 18
- ◆ Ancillaries 19



www.plastexmatting.com

Why Slip Resistant Matting?

Statistics issued by the UK's HSE (Health & Safety Executive) show slipping and tripping to be the single most common cause of injuries in the UK workplace. These statistics are consistent in most markets globally confirming slips, trips and falls being a major workplace hazard.

Our slip resistant matting products are specifically designed to:

- **Improve safety underfoot**
- **Reduce slip, trip and fall accidents**
- **Remove spillages and debris from the working area**
- **Thermal and acoustical enhancement**

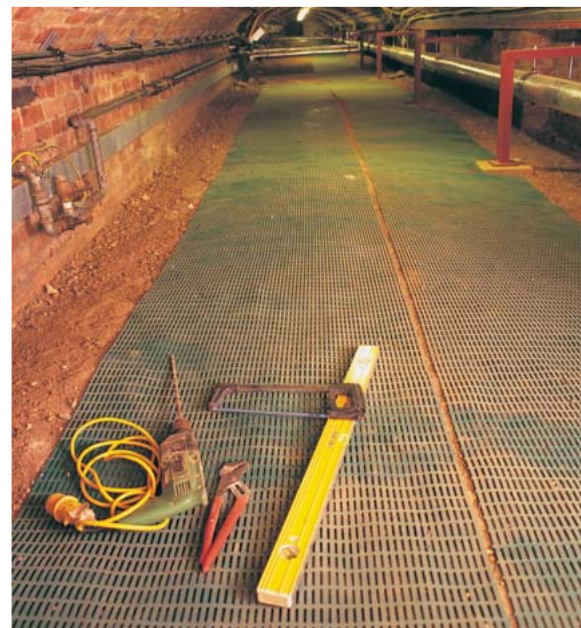
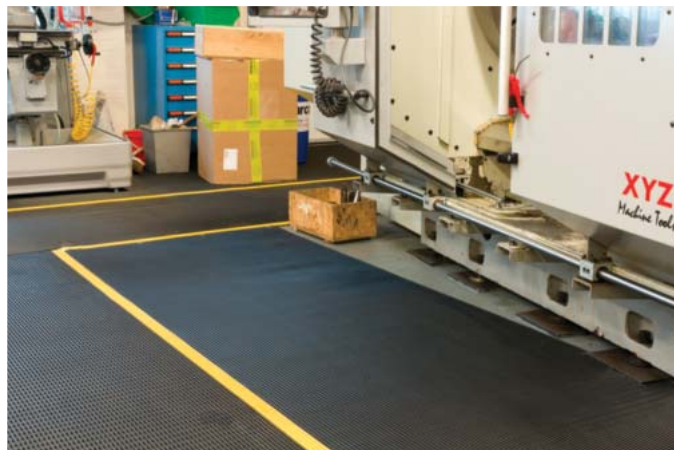
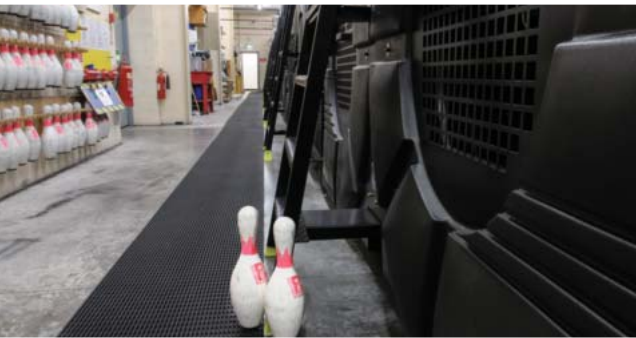
Plastex slip resistant matting range features a combination of PVC construction etched or cut surfaces for improved slip resistance, animal fat and oil resistant properties, 100% recycled PVC products and many more...

Which Plastex product is right for you?

The chart below will help you choose the right mat for the right reasons, but if you have any questions contact us - we'll be delighted to help.

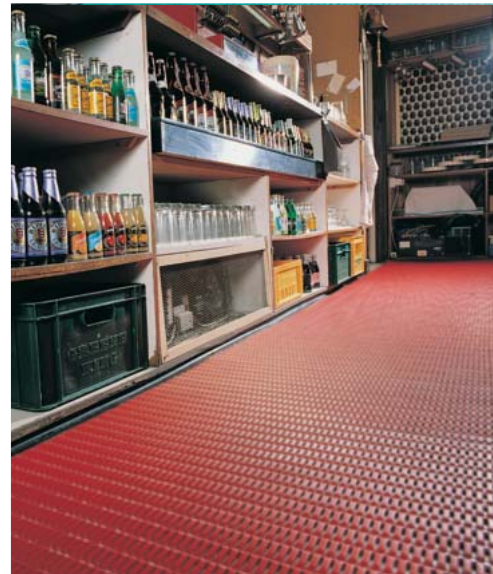
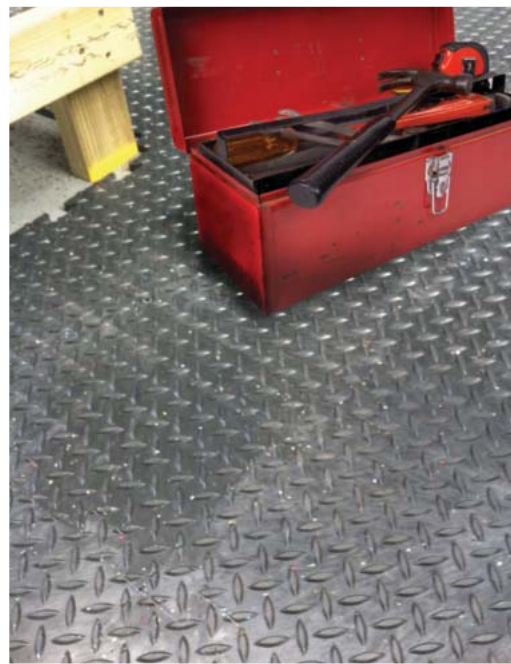
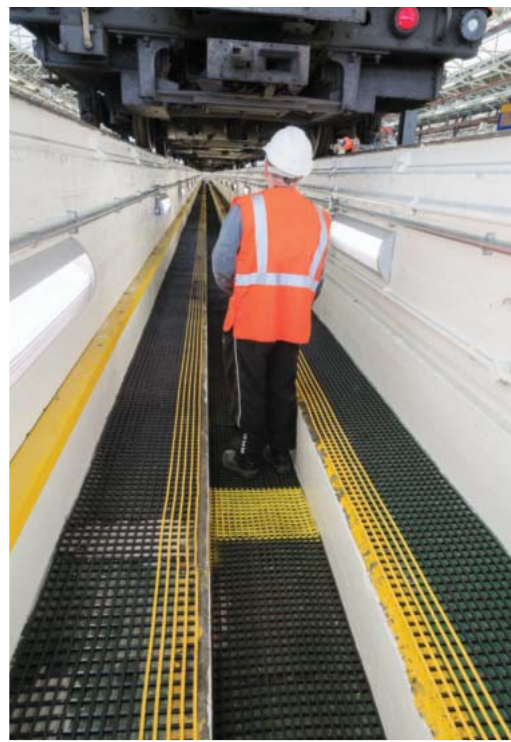
PRODUCT	SLIP RESISTANCE	WEAR	COMFORT	DRAINAGE/ SPILLAGE	SITUATION	USAGE
GENERAL PURPOSE						
Vynagrip Vynagrip Plus Vynagrip Modules p. 8-10						Hard wearing, heavy usage, long term.
Heronair p. 11						Cushions against breakages, good general purpose.
Floorline p. 12						Ideal for light usage and cushioning.
Plastex Chex p. 16						For coverage of large areas.
Plastex Lok p. 17						For coverage of large areas with likelihood of spillage.
Trackgrip p. 18						Hard wearing, large debris, long term.
WORKSHOP / TOOL ROOM						
Flexigrid p. 14						Larger components, debris, swarf and heavy spillage.
Firmagrip p. 15						Close spaced grid, smaller components and wheeled traffic.
FOOD PROCESSING / KITCHENS						
Herongripa p. 13						Large format grid ideal for food processing environments

INSIDE OR OUT,



A MAT FOR

CLEAN OR NOT



ALL REASONS

VYNAGRIP

The ultimate slip resistant matting solution

Automatic drainage combined with an extra aggressive diamond tread surface for increased slip resistance make Vynagrip especially effective wherever oil, water, liquid and debris spillages are likely.

Increase safety, comfort and productivity in the workplace with Vynagrip. Vynagrip offers a slip resistant, anti-fatigue matting solution which can be relied upon to perform in wide ranging heavy duty commercial and industrial applications.

Vynagrip is made from 2 layers of non-porous, flexible PVC welded together to create extra strong joints. It is available in rolls or modules with accessories to suit all needs (see page 19).



BENEFITS

Certified slip resistance **DIN 51130:R11 - ASTM 1677: 1.0/0.9**

Excellent drainage **DIN 51130:V10**

Chemical, oil and acid resistant

Environmentally-friendly

Easy to cut on site, contours to uneven surfaces

Quick to install

Boost productivity

Fire resistant

FEATURES

Diamond cut pattern

Two layer construction

Non-porous PVC (impermeable to fluids)

Black Vynagrip: 100% recycled material

Made from flexible PVC

Supplied in 10m rolls or ramped modules

Proven and tested anti-fatigue properties

Certified **EN 13501: Cl - S1**

STANDARD COLOURS



RED*



BLUE



BLACK

* Red colour is not colourfast in direct sunlight.

BLACK VYNAGRIP

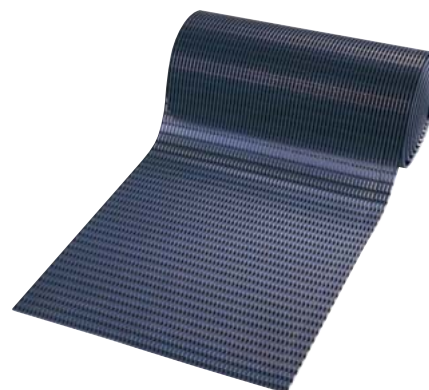
An environmentally-friendly product made from 100% recycled material, giving a 10% lower purchase price.

Other Vynagrip colours available on request.

STANDARD SIZES

PRODUCT	HEIGHT	STANDARD ROLL OPTIONS**		
Vynagrip	15mm (5/8")	5 x 0.6m (16'6" x 2)	5 x 0.91m (16'6" x 3)	5 x 1.22m (16'6" x 4)
Vynagrip	15mm (5/8")	10 x 0.6m (33' x 2)	10 x 0.91m (33' x 3)	10 x 1.22m (33' x 4)

**Contact us for bespoke dimensions.



VYNAGRIP PLUS

A slip resistant matting with yellow bands

A hard wearing PVC grid matting to mark routes and delineate areas.

With the same specifications as Vynagrip, a slip resistant, anti-fatigue matting solution which can be relied upon to perform in wide ranging heavy duty commercial and industrial applications, Vynagrip Plus matting has yellow bands for extra safety and demarcation.

The matting is made from 2 layers of non-porous, flexible PVC welded together to create extra strong joints. It is available in rolls with accessories to suit all needs.



BENEFITS

- Certified slip resistance **DIN 51130:RII - ASTM 1677: 1.0/0.9**
- Excellent drainage **DIN 51130:V10**
- Marks routes and delineates areas
- Chemical, oil and acid resistant
- Easy to cut on site, contours to uneven surfaces
- Quick to install
- Boost productivity
- Fire resistant

FEATURES

- Diamond cut pattern
- Two layer construction
- Yellow bands running length of mat
- Non-porous PVC (impermeable to fluids)
- Made from flexible PVC
- Supplied in 10m rolls
- Proven and tested anti-fatigue properties
- Certified **EN 13501:Cfl - S1**

STANDARD COLOUR

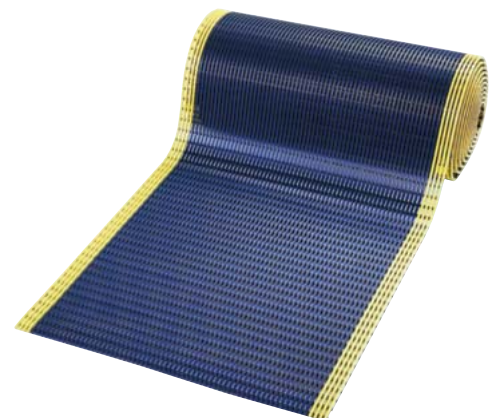


WITH YELLOW BANDS

STANDARD SIZES

PRODUCT	HEIGHT	STANDARD ROLL OPTIONS*		
Vynagrip Plus	15mm (5/8")	10 x 0.6m (33' x 2)	10 x 0.91m (33' x 3)	10 x 1.22m (33' x 4)

*Contact us for bespoke dimensions.



VYNAGRIP MODULES

Reducing slips and standing fatigue at work

Hard wearing PVC grid matting modules providing comfort and slip resistance.

Vynagrip matting is also available in standard size modules with fitted edging on 3 sides to identify work areas, prevent hazards and fit snugly against work stations.

Vynagrip is made from 2 layers of non-porous, flexible PVC that are welded together to create extra strong joints. Its diamond tread surface and proven anti-fatigue properties make it one of the most suited mats for reducing standing fatigue, whilst improving comfort in work environments.



BENEFITS

Certified slip resistance **DIN 51130: R11 - ASTM 1677: 1.0/0.9**

Excellent drainage **DIN 51130: V10**

Chemical, oil and acid resistant

Contours to uneven surfaces

Fits snugly against work surfaces

Boost productivity

Fire resistant

Quick to install

FEATURES

Diamond cut pattern

Two layer construction

Non-porous PVC (impermeable to fluids)

Made from flexible PVC

Supplied with fitted edging on 3 sides

Proven anti-fatigue properties

Certified **EN 13501: Cf1 - S1**

2 standard sizes with factory fitted edging

STANDARD COLOURS



BLACK with GREY edging



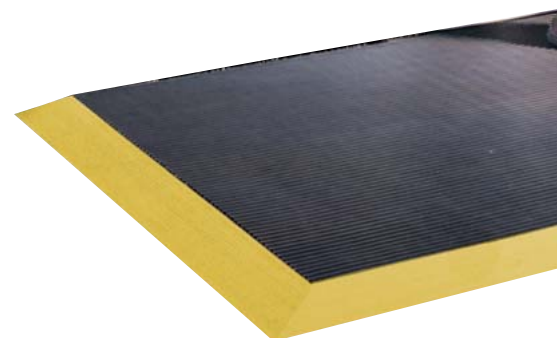
BLACK with YELLOW edging

Other colours available on request.

STANDARD MODULE SIZES

PRODUCT	HEIGHT	STANDARD MODULE OPTIONS*	
Vynagrip Modules	15mm (5/8")	1.2 x 0.8m (4' x 2'5")	1.5 x 1.m (5' x 3'3")

* Supplied with factory fitted edging on 3 sides.



HERONAIR

A hardwearing and versatile work horse

Heronair is an economical, tubular constructed matting for general purpose applications that provides excellent slip resistance and insulation.

Heronair's hollow construction uses less material, so it is also light to move and easy to lift for cleaning purposes.

It is especially effective wherever there is a risk of water and spillages underfoot as it is also highly slip resistant (RI I under DIN 51130 testing).



BENEFITS

Certified slip resistance **DIN 51130:RI I - ASTM 1677: 0.6/0.6**

Excellent drainage **DIN 51130:V10**

Fatigue-reducing and insulating

Chemical, oil and acid resistant

Easy to cut on site, contours to uneven surfaces

Quick to install

Fire resistant

Environmentally-friendly

FEATURES

Etched pattern

Two layer construction

Hollow construction

Non-porous PVC

Made from flexible PVC

Supplied in 10m rolls

Certified **EN 13501: Cfl - S1**

Made from 100% recycled material

STANDARD COLOUR



BLACK

Other colours available on request.

STANDARD SIZES

PRODUCT	HEIGHT	STANDARD ROLL OPTIONS*		
Heronair	10mm (3/8")	10 x 0.5m (33' x 1'8")	10 x 0.75m (33' x 2'5")	10 x 1m (33' x 3'3")

*Contact us for bespoke dimensions.



FLOORLINE

Light, economical and comfortable

Economical and multi-purpose, Floorline matting has wide ranging uses in light industrial and commercial applications where an attractive, slip resistant and cushioned matting is required.

The cushioning effect of Floorline reduces the risk of damage to items that are accidentally dropped whilst its open grid format dissipates spillages and permits easy drainage.

This effective combination makes Floorline a popular matting for clubs, restaurants, bars and hospitality areas where staff have to stand, spills are likely and breakages possible.



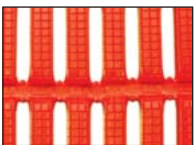
BENEFITS

- Certified slip resistance **DIN 51130: R11 & C** **ASTM 1677: 1.0/0.8**
- Excellent drainage **DIN 51130: V10**
- Easy to clean
- Easy to cut on site, contours to uneven surfaces
- Quick to install
- UV resistant
- Fire resistant
- Enhanced branding or styling

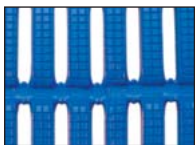
FEATURES

- Etched pattern
- Open grid construction
- Non-porous PVC (impermeable to fluids)
- Made from flexible PVC
- Supplied in 10m rolls
- Can be used indoor or outdoor*
- Certified **EN 13501: Cfl - S1**
- 5 standard colours

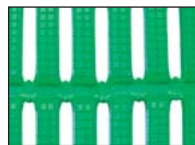
STANDARD COLOURS



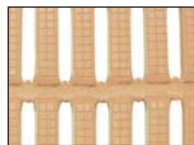
RED*



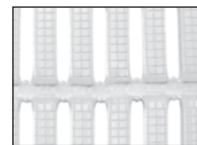
BLUE



GREEN



BEIGE



WHITE

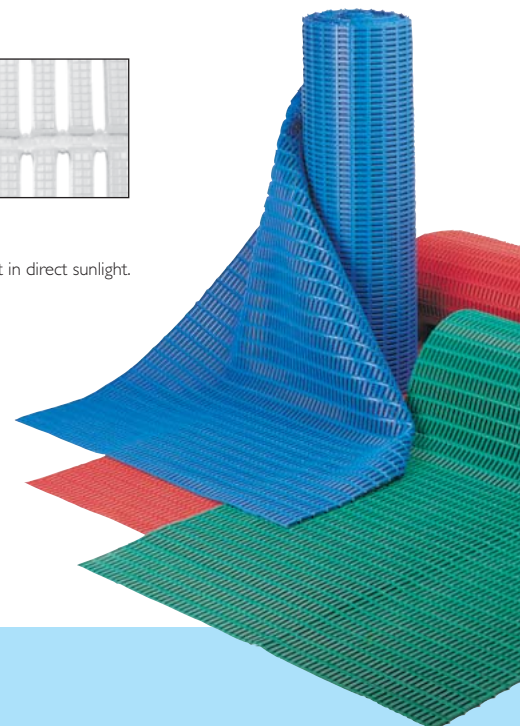
Other colours available on request.

* Red colour is not colourfast in direct sunlight.

STANDARD SIZES

PRODUCT	HEIGHT	STANDARD ROLL OPTIONS**	
Floorline	6mm (1/4")	10 x 0.6m (33' x 2)	10 x 0.91m (33' x 3)

**Contact us for bespoke dimensions.



HERONGRIPA

Vinyl matting resistant to animal fat and oils

Developed primarily for the food processing and preparation industries, Herongripa is a specialised vinyl matting solution, which is hygienic and animal fat resistant.

The wide spaced open grid format allows waste and spillages to fall through, keeping the standing area free of slippery and potentially hazardous matter. The one piece hardwearing vinyl roll format allows for ease of rolling up during cleaning routines.



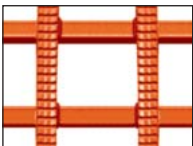
BENEFITS

- Certified slip resistance **DIN 51130: R11** **ASTM 1677: 0.8/0.7**
- Excellent drainage **DIN 51130: V10**
- Tough vinyl for food processing areas
- Chemical, oil and acid resistant
- One piece covering
- Continuous hygiene
- Efficiently removes spillages

FEATURES

- Diamond cut pattern
- Two layer construction
- Animal fat resistant DINP plasticised PVC
- Non-porous PVC (impermeable to fluids)
- Supplied in 10m rolls
- Anti-fungal and anti-bacterial additives
- Large open grid format

STANDARD COLOUR

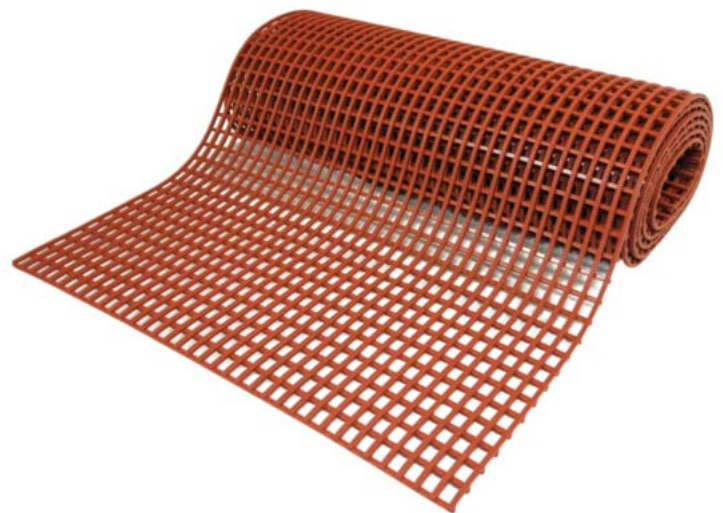


TERRACOTTA

STANDARD SIZES

PRODUCT	HEIGHT	STANDARD ROLL OPTIONS*		
Herongripa	15mm (5/8")	5 x 0.6m (16'6" x 2')	5 x 0.91m (16'6" x 3')	5 x 1.22m (16'6" x 4')
Herongripa	15mm (5/8")	10 x 0.6m (33' x 2')	10 x 0.91m (33' x 3')	10 x 1.22m (33' x 4')

*Contact us for bespoke dimensions.



FLEXIGRID

Tough at work, gentle on the environment

For the toughest industrial applications where high levels of liquids and debris are generated by manufacturing and production processes.

Combining higher elevation with an open grid and an aggressive grip surface, Flexigrid delivers slip resistance and drainage where spillage, debris and metal shards are an issue.



BENEFITS

- Certified slip resistance **DIN 51130: R11 - ASTM 1677: 0.6/0.5**
- Excellent drainage **DIN 51130: V10**
- Chemical, oil and acid resistant
- Easy to cut on site, contours to uneven surfaces
- Quick to install
- Boost productivity
- Environmentally friendly
- Fire resistant

FEATURES

- Diamond tread surface
- Two layer construction
- Non-porous PVC (impermeable to fluids)
- Made from flexible PVC
- Supplied in 10m rolls
- Proven anti-fatigue properties
- Made from 100% recycled material
- Certified **EN 13501: Cfl - S1**

STANDARD COLOUR



BLACK

STANDARD SIZES

PRODUCT	HEIGHT	STANDARD ROLL OPTIONS*		STANDARD MODULE OPTIONS*	
Flexigrid	20mm (3/4")	5 x 0.6m (16'6" x 2')	5 x 0.91m (16'6" x 3')	1.8 x 0.6m (6' x 2')	1.8 x 0.91m (6' x 3')
Flexigrid	20mm (3/4")	10 x 0.6m (33' x 2')	10 x 0.91m (33' x 3')		

*Contact us for bespoke dimensions.

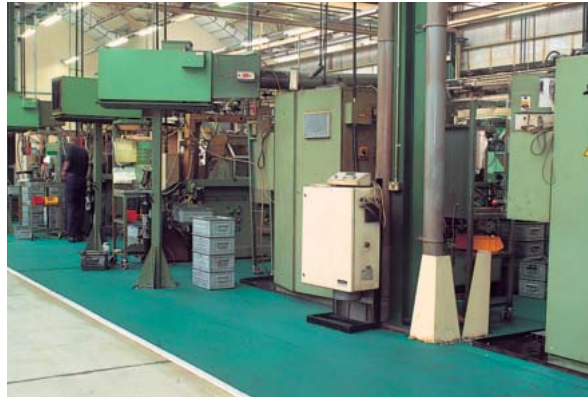


F I R M A G R I P

Close mesh matting for small wheeled traffic

For busy industrial areas where trolleys and small-wheeled vehicles are in use and liquids may be liable to be spilled.

Firmagrip is a quality close mesh matting, dense enough to prevent smaller components falling through, yet effective at drainage, it carries the highest certification. Add to that excellent slip resistance and you've got a quality matting solution.



BENEFITS

- Certified slip resistance **DIN 51130: R11**
- Excellent drainage **DIN 51130: V10**
- Ideal for small wheeled traffic
- Chemical, oil and acid resistant
- Easy to cut on site, contours to uneven surfaces
- Quick to install
- Fire resistant
- Enhanced branding or styling

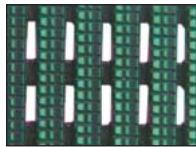
FEATURES

- Diamond cut pattern
- Two layer construction
- Close mesh construction
- Non-porous PVC (impermeable to fluids)
- Made from flexible PVC
- Supplied in 10m rolls
- Certified **EN 13501: Cf1 - S1**
- 3 standard colours

STANDARD COLOURS



RED*



GREEN



BLACK

Other colours available on request. * Red colour is not colourfast in direct sunlight.

STANDARD SIZES

PRODUCT	HEIGHT	STANDARD ROLL OPTIONS**		
Firmagrip	14mm (9/16")	10 x 0.6m (33' x 2')	10 x 0.91m (33' x 3')	10 x 1.22m (33' x 4')

**Contact us for bespoke dimensions.



PLASTEX CHEX

100% recycled heavy duty checker plate PVC tiles

Plastex Chex is a hard wearing tiling system, delivering long life and value for money.

It can be used as a temporary or permanent flooring solution for coverage of large areas in the workplace, such as work stations, finishing/assembly areas, laboratories, localised workcells and storage areas.



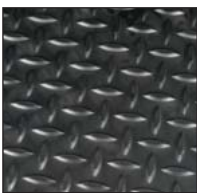
BENEFITS

- Slip resistant and hard wearing
- Insulating and chemical, oil and acid resistant
- Quick to install
- Environmentally-friendly
- REACH compliant
- Finished areas

FEATURES

- Checker plate surface
- Non-porous PVC (impermeable to fluids)
- Interlocking jigsaw tiles
- Made from 100% recycled material
- Made with certified recycled material
- PVC ramped edging

STANDARD COLOUR

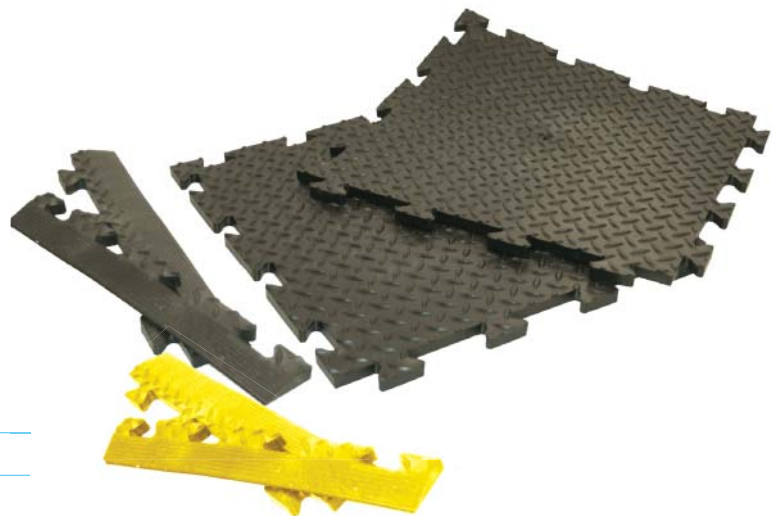


BLACK

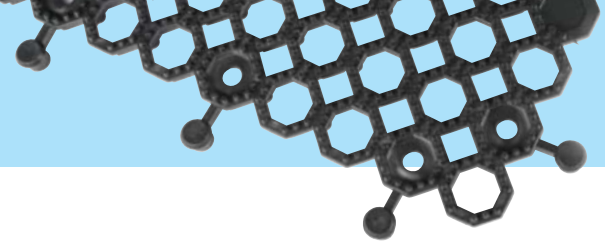
STANDARD SIZES

PRODUCT	HEIGHT	STANDARD TILE SIZE
Plastex Chex	14mm (9/16")	0.5 x 0.5m (1'8" x 1'8")

Available in packs of 16 tiles



PLASTEX LOK



100% recycled heavy duty open grid PVC tiles

Plastex Lok is a hard wearing open grid tiling system, delivering long life and value for money.

It can be used as a temporary or permanent flooring solution for coverage of large areas in the workplace with the likelihood of heavy spillage, such as work stations, finishing/assembly areas, laboratories, localised work cells and machine shops.



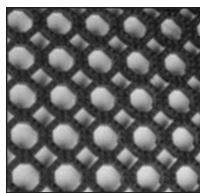
BENEFITS

- Certified slip resistance **DIN 51130: R12**
- Excellent drainage **DIN 51130: V10**
- Chemical, oil and acid resistant
- Quick to install
- Environmentally-friendly
- Easy to cut on site, contours to uneven surfaces
- Finished areas

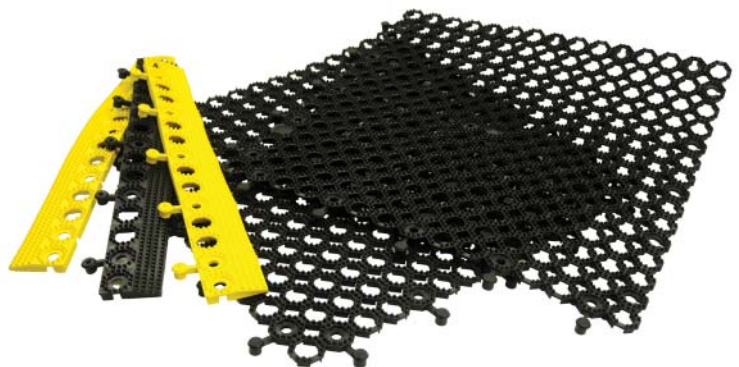
FEATURES

- Pimpled surface
- Raised construction
- Non-porous PVC (impermeable to fluids)
- Interlocking tiles
- Made from 100% recycled material
- Made from flexible PVC
- PVC ramped edging

STANDARD COLOUR



BLACK



STANDARD SIZES

PRODUCT	HEIGHT	STANDARD TILE SIZE
Plastex Lok	16mm (5/8")	0.5 x 0.5m (1'8" x 1'8")

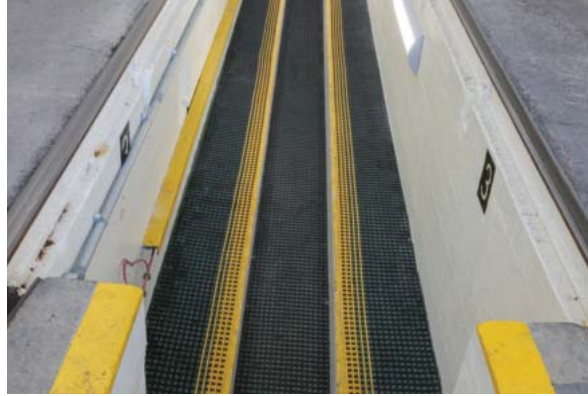
Available in packs of 16 tiles

T R A C K G R I P

Wide space open grid slip resistant matting

For greasy and grimy environments.

This highly slip resistant matting is very effective wherever oils or greasy materials are spilled. A wide grid design allows for better drainage and fall through, keeping the surface free from potentially dangerous slip hazards. Trackgrip was developed for railway maintenance areas but is highly effective in most greasy and grimy environments.



BENEFITS

- Certified slip resistance **DIN 51130: R11** **ASTM 1677: 0.9/0.7**
- Excellent drainage
- Chemical, oil and acid resistant
- Easy to clean with a high pressure hose
- Quick to install
- Fire resistant

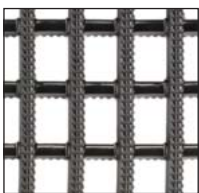
FEATURES

- Diamond cut pattern
- Two layer construction and extra wide spacing
- Non-porous PVC (impermeable to fluids)
- Made from flexible PVC
- Supplied in 10m rolls
- Certified **EN 13501: Cfl - S1**

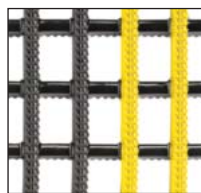
Trackgrip Plus

Trackgrip with the additional benefit of yellow bands to mark routes and delineate areas.

STANDARD COLOUR



BLACK



BLACK with YELLOW EDGING



STANDARD SIZES

PRODUCT	HEIGHT	STANDARD ROLL OPTIONS*		
Trackgrip	15mm (5/8")	10 x 0.6m (33' x 2')	10 x 0.91m (33' x 3')	10 x 1.22m (33' x 4')
Trackgrip Plus	15mm (5/8")	10 x 0.6m (33' x 2')	10 x 0.91m (33' x 3')	10 x 1.22m (33' x 4')

*Contact us for bespoke dimensions.

Ancillaries for Workplace slip resistant products

Firmagrip

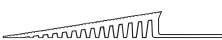


14mm x 60mm x 10.1m
(9/16" x 2 1/2" x 33')

60mm PVC edging strip

Supplied in rolls of 10.1m (33') length with cold welding paste.

Colours: Black, Dark Grey, Dark Brown, Holly Green, Oxford Blue, Yellow



14mm x 100mm x 10.1m
(9/16" x 3 3/4" x 33')

100mm PVC edging strip

Supplied in rolls of 10.1m (33') length with cold welding paste.

Colours: Black, Dark Grey, Yellow

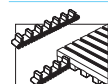


15mm x 45mm x 2m
(5/8" x 1 13/16" x 6'6")

45mm Aluminium edging strip

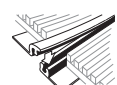
Supplied in sections of 2m (6'6") length with fixing screws and plugs.

Colours: Anodised Aluminium, Powder Coated Yellow



Connector clips - side to side

For joining sections of matting together side to side. Supplied in packs of 10.



14mm x 2.5m
(9/16" x 8'2")

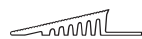
Snap Track

2 part snap track can be welded to join rolls end to end or side to side for large area covering.

Supplied with cold welding paste.

Colour: Dark Grey

Herongripa & Trackgrip



14mm x 60mm x 10.1m
(9/16" x 2 1/2" x 33')

60mm PVC edging strip

Supplied in rolls of 10.1m (33') length with cold welding paste.

Colours: Black, Dark Grey, Dark Brown, Holly Green, Oxford Blue, Yellow



14mm x 100mm x 10.1m
(9/16" x 3 3/4" x 33')

100mm PVC edging strip

Supplied in rolls of 10.1m (33') length with cold welding paste.

Colours: Black, Dark Grey, Yellow

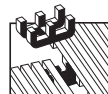


15mm x 45mm x 2m
(5/8" x 1 13/16" x 6'6")

45mm Aluminium edging strip

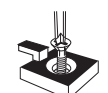
Supplied in sections of 2m (6'6") length with fixing screws and plugs.

Colours: Anodised Aluminium, Powder Coated Yellow



Connector clips - dual purpose

For joining sections of matting together side to side or end to end. Supplied in packs of 10.



Small floor hook

For securing sections of matting to floor. Supplied in packs of 10 with screws and plugs.

Heronair

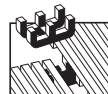


10mm x 50mm x 10.1m
(3/8" x 2" x 33')

50mm PVC edging strip

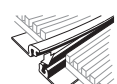
Supplied in rolls of 10.1m (33') length with cold welding paste.

Colours: Black, Dark Grey



Connector clips - dual purpose

For joining sections of matting together side to side or end to end. Supplied in packs of 10.



10.5mm x 1.8m
(1/32" x 5'11")

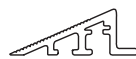
Snap Track - Low Profile

2 part snap track can be welded to join rolls end to end or side to side for large area covering.

Supplied with cold welding paste.

Colour: Dark Grey

Flexigrid



22mm x 50mm x 2m
(7/8" x 2 3/16" x 6'6")

50mm Aluminium edging strip

Supplied in sections of 2m (6'6") length with fixing screws and plugs.

Colours: Anodised Aluminium

Vynagrip & Vynagrip Plus

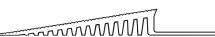


14mm x 60mm x 10.1m
(9/16" x 2 1/2" x 33')

60mm PVC edging strip

Supplied in rolls of 10.1m (33') length with cold welding paste.

Colours: Black, Dark Grey, Dark Brown, Holly Green, Oxford Blue, Yellow



14mm x 100mm x 10.1m
(9/16" x 3 3/4" x 33')

100mm PVC edging strip

Supplied in rolls of 10.1m (33') length with cold welding paste.

Colours: Black, Dark Grey, Yellow

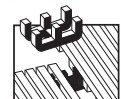


15mm x 45mm x 2m
(5/8" x 1 13/16" x 6'6")

45mm Aluminium edging strip

Supplied in sections of 2m (6'6") length with fixing screws and plugs.

Colours: Anodised Aluminium, Powder Coated Yellow



Connector clips - dual purpose

For joining sections of matting together side to side or end to end. Supplied in packs of 10.



Connector clips - side to end

For joining sections of matting together side to end. Supplied in packs of 10.



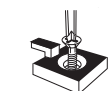
14mm x 2.5m
(9/16" x 8'2")

Snap Track

2 part snap track can be welded to join rolls end to end or side to side for large area covering.

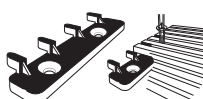
Supplied with cold welding paste.

Colour: Dark Grey



Small floor hook

For securing sections of matting to floor. Supplied in packs of 10 with screws and plugs.



Large floor hook

For securing sections of matting to floor. Supplied in packs of 10 with screws and plugs.

Plastex Chex



12mm x 50mm x 500mm
(1/2" x 2" x 1'8")

50mm PVC edging strip

Supplied in 50cm (1'8") lengths.

Colours: Black, Yellow

Plastex Lok



12mm x 50mm x 500mm
(1/2" x 2" x 1'8")

50mm PVC edging strip

Male and female strips available. Supplied in 500mm lengths (1'8").

Colours: Black, Yellow



50mm PVC edge corner

Colours: Black, Yellow

12mm x 50mm x 50mm
(1/2" x 2" x 2")

Connector clips - end to end

For joining two ends of the edging together. One lug is supplied for every two pieces of edging in the relevant colour.

Colours: Black, Yellow



Workplace

ANTI-FATIGUE MATTING

◆ Introduction	21
◆ Why is Anti-fatigue Important?	22
◆ Tuff Spun	23
◆ Tuff Spun Wear	24
◆ Tuff Spun Deck	25
◆ Zed Land	26
◆ Zed Tred	27
◆ Zed Chex	28
◆ Sparksafe	29
◆ Heronair	30
◆ Ancillaries	31



www.plastexmatting.com

Why anti-fatigue matting?

Half the UK workforce stand or walk for more than 4 hours per day using 20% more energy than their seated colleagues. Statistics are consistent in most markets globally, confirming fatigue and resultant productivity reductions are a major workplace problem. Employers who provide high quality underfoot comfort will:

- **Improve concentration**
- **Decrease risk of circulatory problems**
- **Improve productivity**
- **Decrease injury risk**

The patented foam used in Zed Land, Zed Tred and Zed Chex provides excellent standing fatigue reduction, hard wearing and continued resilience long after less expensive foam matting will have deadened.

Which Plastex product is right for you?

The chart below will help you choose the right mat for the right reasons, but if you have any questions contact us - we'll be delighted to help.

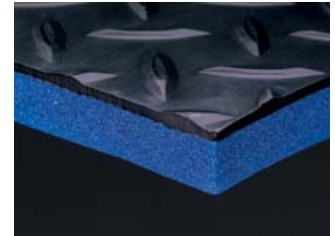
PRODUCT	SLIP RESISTANCE	WEAR	BOUNCE/FATIGUE REDUCTION	DRAINAGE/ SPILLAGE	SITUATION	USAGE
GENERAL PURPOSE - Suitable for most dry applications						
Tuff Spun p. 23				Dry only		The best budget anti-fatigue matting available with yellow edging for safety.
Tuff Spun Wear p. 24				Dry only		Added wear layer offers extra comfort and improved durability.
Tuff Spun Deck p. 25				Dry only		Checker plate foam for added traction and puncture resistance.
Zed Land p. 26				Dry only		The ultimate high bounce, long lasting general purpose anti-fatigue mat.
HEAVY DUTY - Strengthened with extra thermally bonded surface matting						
Zed Tred p. 27						Copes with light spillage and debris.
Zed Chex p. 28						Industry standard pattern - available in black.
FOR WHEN THE HEAT IS ON						
Sparksafe p. 29				Dry only		Industrial work and welding stations, repels sparks and hot metal shards.
GENERAL PURPOSE - Suitable for most wet applications						
Heronair p. 30						Cushions against breakages, good general purpose.

Why is anti-fatigue matting important?

Apart from the need for comfort and grip, standing relatively still at a work station can cause circulatory problems leading to increased fatigue, which may result in accidents and/or decreased productivity.

How Plastex anti-fatigue matting works

With its bonded combination of a durable surface and foam backing, Plastex anti-fatigue matting is the ideal mix of safety and comfort. The surface patterns provide varying degrees of grip and drainage to cover the full range of needs from light duty, to heavy industrial use. As well as insulating and softening cold hard floors, the foam backing encourages micro muscle movements that improve blood flow, preventing fatigue and potential long term health issues.



For large and small floor areas

Our matting is available in module and roll format enabling versatile usage:

- Large floor areas
- Runners alongside work stations
- Single modular mats for individual work stations.

For more complex areas, the matting is easy to cut to shape and install.



Runner alongside work station



Work station module mat

Edging Options

Standard length rolls and modules of foam or foam/wear layer combination are supplied with integral edging on all 4 sides.



Integral Edging



PVC Edging



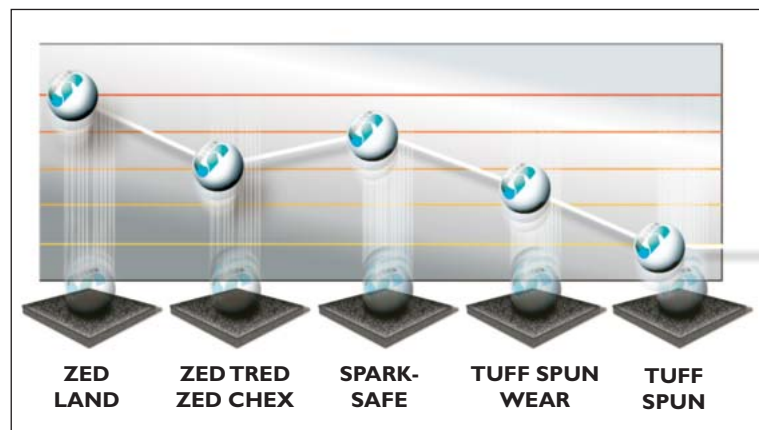
Field Edging

Foam only products (Tuff Spun, Tuff Spun Wear, Tuff Spun Deck and Zed Land) if cut on site and used as part rolls, require PVC edging strips (10mm or 14mm heights) to achieve an edging on cut ends.

Dual layer products (Sparksafe, Zed Tred and Zed Chex) if cut on site and used as part rolls, require a field edge to be fabricated. Simply cut back and remove the underside foam, so that the top wear layer creates a sloped finish.

The golf ball bounce test

For a low tech version of our bounce test simply hold a golf ball about 30cm (1') or so above one of our anti-fatigue mats and let go - the higher the bounce the more resilience and comfort the mat will provide.



TUFF SPUN

An economical anti-fatigue foam matting

REACH compliant closed cell matting in PVC foam composition for light duty use.

A good value, hard working, anti-fatigue matting with a ribbed slip resistant surface, Tuff Spun also reduces impact noise and protects items accidentally dropped.



BENEFITS

Certified wear resistance **ASTM 4060**: <1 gram loss

Good slip resistance

Reduces standing fatigue and underfoot noise and protects items accidentally dropped from damage

Quick to install

FEATURES

Minimal wear standing foam which will not deaden

Ribbed surface

Closed cell PVC foam construction

Supplied in 18m rolls or standard modules

STANDARD COLOURS



BLACK



DARK GREY



BLACK WITH
YELLOW EDGING



STANDARD SIZES

PRODUCT	HEIGHT	STANDARD ROLL OPTIONS*		STANDARD MODULE OPTIONS*		
Tuff Spun Grey	9mm (3/8")	18 x 0.91m (60' x 3')		0.6 x 0.91m (2' x 3')	0.91 x 1.5m (3' x 5')	0.91 x 3m (3' x 10')
Tuff Spun Black	9mm (3/8")	18.0 x 0.6m (60' x 2')	18 x 0.91m (60' x 3')	18 x 1.22m (60' x 4')		
Tuff Spun Plus	9mm (3/8")		18 x 0.91m (60' x 3')	0.6 x 0.91m (2' x 3')	0.91 x 1.5m (3' x 5')	0.91 x 3m (3' x 10')

*Supplied with integral edging to 4 sides.

TUFF SPUN WEAR

Heavy duty top layer for improved abrasion

Economical alternative for medium duty applications.

With an increased foam thickness of almost 50% on Tuff Spun, and incorporating a top surface wear layer, Tuff Spun Wear provides extra comfort and improved durability.

The anti-fatigue mat is suitable for most medium duty retail and commercial environments.



BENEFITS

Certified wear resistance **ASTM 4060:** <0.3 gram loss

Good slip resistance

Extra cushion comfort

Quick to install

FEATURES

Heavy duty top layer

Embossed pebble surface

Increased foam thickness

Supplied in 18m rolls or standard modules

STANDARD COLOUR



DARK GREY



STANDARD SIZES

PRODUCT	HEIGHT	STANDARD ROLL OPTION*	STANDARD MODULE OPTIONS*		
Tuff Spun Wear	14mm (9/16")	18 x 0.91m (60' x 3')	0.6 x 0.91m (2' x 3')	0.91 x 1.5m (3' x 5')	0.91 x 3m (3' x 10')

*Supplied with integral edging to 4 sides.

TUFF SPUN DECK

Foam matting with heavy duty deck-top surface

For dry commercial and workplace environments.

Tuff Spun Deck has a wear foam layer for comfort with a checker plate embossed vinyl foam for added traction, abrasion and puncture resistance.



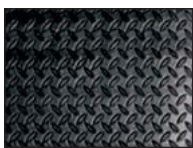
BENEFITS

- Certified wear resistance **ASTM 4060: <0.2 gram loss**
- Good slip resistance
- Extra cushion comfort
- Quick to install

FEATURES

- Heavy duty deck-top surface
- Embossed surface
- 14mm (9/16") thickness
- Supplied in 18m rolls or standard modules

STANDARD COLOUR



BLACK



STANDARD SIZES

PRODUCT	HEIGHT	STANDARD ROLL OPTION*	STANDARD MODULE OPTIONS*		
Tuff Spun Deck	14mm (9/16")	18 x 0.91m (60' x 3')	0.6 x 0.91m (2' x 3')	0.91 x 1.5m (3' x 5')	0.91 x 3m (3' x 10')

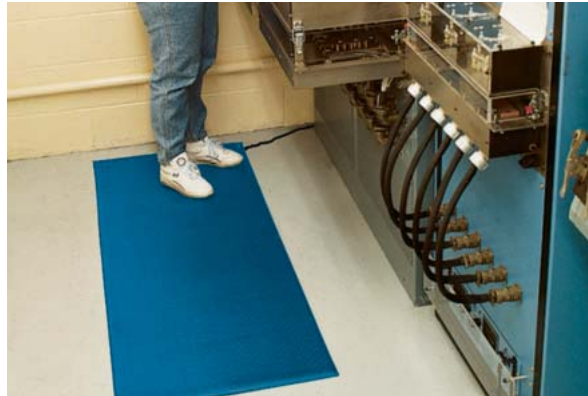
*Supplied with integral edging to 4 sides.

Z E D L A N D

Patented foam construction with ESD properties

Made from high molecular density foam with 'bounce' properties up to 4 times as effective as standard foam matting for improved comfort and productivity.

Standing employees working on Zed Land will feel better and have improved productivity. Dropped components will also be protected from accidental damage. Zed Land will not deaden and shows minimal wear after 2000 taber abrasor cycles in test conditions to ASTM D4060.



BENEFITS

- Certified wear resistance **ASTM 4060: $\leq 1.5\%^{**}$**
- Good slip resistance
- Excellent standing fatigue reducing properties will boost productivity
- Easy to cut to shape and quick to install
- Provides underfoot comfort in static sensitive environments

FEATURES

- Minimal wear standing foam which will not deaden
- Embossed pebble surface
- Patented vinyl foam construction with superior resilience
- Supplied in 18m rolls or standard modules
- Electrostatic dissipative (ESD) properties
Certified **ASTM D257: 10^9**

STANDARD COLOURS

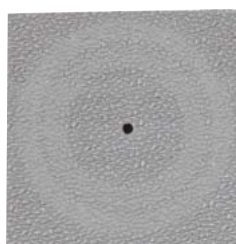


BLUE

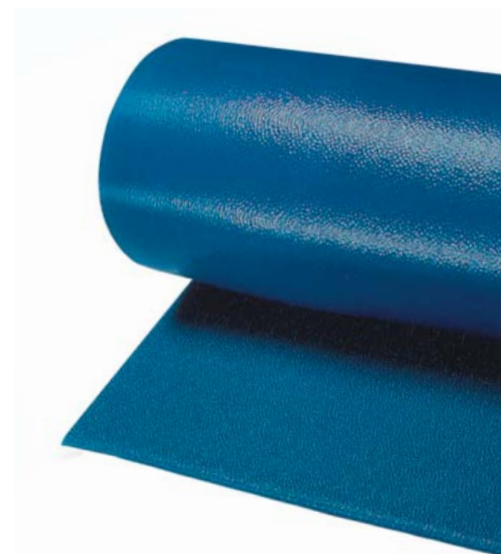


DARK GREY

Other colours available on request.



**ASTM 4060 @ 2000 cycles



STANDARD SIZES

PRODUCT	HEIGHT	STANDARD ROLL OPTION*	STANDARD MODULE OPTIONS*		
Zed Land	9mm (3/8")	18 x 0.91m (60' x 3')	0.6 x 0.91m (2' x 3')	0.91 x 1.5m (3' x 5')	0.91 x 3m (3' x 10')

*Supplied with integral edging to 4 sides.

Z E D T R E D

Heavy duty ribbed surface on a high density foam

Outstanding slip resistance and wear with thermally laminated Zed Land foam that provides excellent anti-fatigue properties.

An exceptional combination of extremely durable Flexi Tred vinyl fused to patented Zed Land anti-fatigue blue foam. This product is manufactured with a very hard wearing slip resistant ribbed surface. Anti-fatigue matting at its most resilient.



BENEFITS

- High wear resistance and resilience
- Extra slip resistance
- Excellent standing fatigue reducing properties will boost productivity
- Easy to cut to shape and quick to install

FEATURES

- Minimal wear standing foam which will not deaden
- Ribbed vinyl surface
- Patented vinyl foam construction with superior resilience
- Supplied in 10m rolls or standard modules

STANDARD COLOURS



BLUE



LIGHT GREY



STANDARD SIZES

PRODUCT	HEIGHT	STANDARD ROLL OPTION*	STANDARD MODULE OPTIONS*		
Zed Tred	13mm (1/2")	10 x 1m (33' x 3'3")	1 x 1.5m (3'3" x 5')	1 x 3.3m (3'3" x 10'10")	1 x 5m (3'3" x 16'6")

*Supplied with integral edging to 4 sides.

Versatile, multi-purpose matting for any workplace

Checker plate vinyl surface on a thermally laminated patented Zed Land high density foam.

Multi-purpose, anti-fatigue matting comprising Zed Land blue foam thermally fused with a robust, slip resistant wear surface in a checker plate design.

Chemical, oil and acid resistant.



BENEFITS

High wear resistance and resilience

Extra slip resistance

Excellent standing fatigue reducing properties will boost productivity

Easy to cut to shape and quick to install

FEATURES

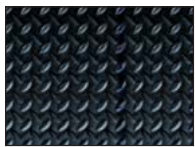
Minimal wear standing foam which will not deaden

Checker plate vinyl surface

Patented vinyl foam construction with superior resilience

Supplied in 18m rolls or standard modules

STANDARD COLOURS



BLACK



BLACK WITH YELLOW EDGING

Zed Chex Plus with yellow edging to increase visual safety in any area of the workplace.



STANDARD SIZES

PRODUCT	HEIGHT	STANDARD ROLL OPTIONS*		STANDARD MODULE OPTIONS*			
		18 x 0.91m (60' x 3')	18 x 1.22m (60' x 4')	0.6 x 0.91m (2' x 3')	0.91 x 1.5m (3' x 5')	0.91 x 3m (3' x 10')	0.91 x 6m (3' x 20')
Zed Chex	13mm (1/2")	18 x 0.91m (60' x 3')	18 x 1.22m (60' x 4')	0.6 x 0.91m (2' x 3')	0.91 x 1.5m (3' x 5')	0.91 x 3m (3' x 10')	0.91 x 6m (3' x 20')
Zed Chex Plus	13mm (1/2")	18 x 0.91m (60' x 3')		0.6 x 0.91m (2' x 3')	0.91 x 1.5m (3' x 5')	0.91 x 3m (3' x 10')	0.91 x 6m (3' x 20')

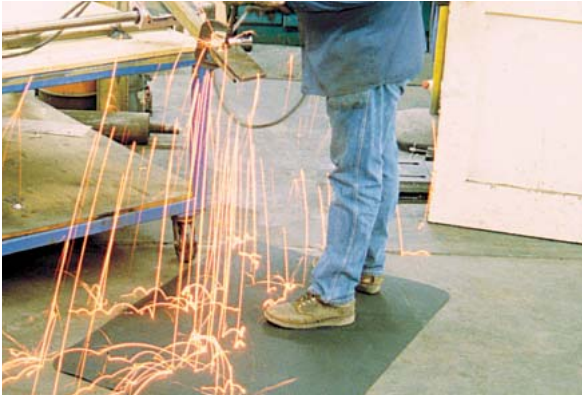
*Supplied with integral edging to 4 sides.

SPARKSAFE

Textured heat repellent rubber top surface on a foam base

Repels sparks and hot metal fragments in industrial workplaces, welding stations, assembly areas, machine shops and wherever heat generating equipment is in use.

For the toughest conditions, when the heat is on, Sparksafe is a two part, all rubber constructed anti-fatigue matting with special heat repellent properties to withstand sparks and hot metal fragments.



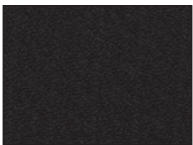
BENEFITS

- High wear resistance and resilience
- Repels sparks and hot metal shards
- Excellent anti-fatigue relief
- Quick to install

FEATURES

- Rubber top with rubber foam backing
- Heat resistant rubber wear layer
- Soft foam base
- Supplied in standard modules

STANDARD COLOUR



BLACK

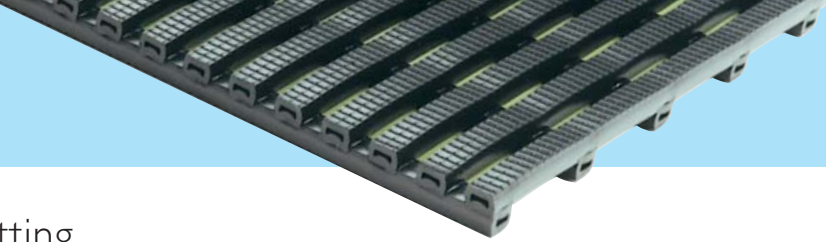


STANDARD SIZES

PRODUCT	HEIGHT	STANDARD MODULE OPTIONS*	
Sparksafe	14mm (9/16")	0.6 x 0.91m (2' x 3')	0.91 x 1.5m (3' x 5')

*Supplied with integral edging to 4 sides.

HERONAIR



An economical anti-fatigue matting

A unique tubular construction matting providing effective anti-fatigue, slip resistance and drainage properties all at the same time.

A widely proven matting solution for light industrial applications where employees are standing in customer service positions, shop and canteen counters, packing lines, warehouses and the like.

Constructed with flexible PVC hollow ribs, hardwearing but lightweight, the matting has the added advantage of dissipating spillages and debris through its 10mm open grid whilst providing a slip resistant surface.



BENEFITS

Certified slip resistance **DIN 51130: R11 - ASTM 1677: 0.6/0.6**

Excellent drainage **DIN 51130: V10**

Fatigue-reducing and insulating

Chemical, oil and acid resistant

Easy to cut on site, contours to uneven surfaces

Quick to install

Fire resistant

Environmentally-friendly

FEATURES

Etched pattern

Two layer construction

Hollow construction

Non-porous PVC

Made from flexible PVC

Supplied in 10m rolls

Certified **EN 13501: Cfl - S1**

Made from 100% recycled material

STANDARD COLOUR



BLACK

Other colours available on request.



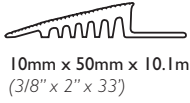
STANDARD SIZES

PRODUCT	HEIGHT	STANDARD ROLL OPTIONS*		
Heronair	10mm (3/8")	10 x 0.5m (33' x 1'8")	10 x 0.75m (33' x 2'5")	10 x 1m (33' x 3'3")

*Contact us for bespoke dimensions.

Anti-fatigue matting ancillaries

Heronair

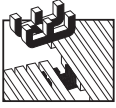


10mm x 50mm x 10.1m
(3/8" x 2" x 33')

50mm PVC edging strip

Supplied in rolls of 10.1m (33') length with cold welding paste.

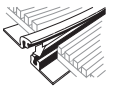
Colours: Black, Dark Grey



Connector clips - dual purpose

For joining sections of matting together side to side or end to end.

Supplied in packs of 10.



10.5mm x 1.8m
(13/32" x 5'11")

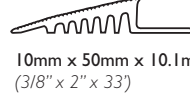
Snap Track - Low Profile

2 part snap track can be welded to join rolls end to end or side to side for large area covering.

Supplied with cold welding paste.

Colour: Dark Grey

Tuff Spun and Zed Land

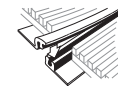


10mm x 50mm x 10.1m
(3/8" x 2" x 33')

50mm PVC edging strip

Supplied in rolls of 10.1m (33') length with cold welding paste.

Colours: Black, Dark Grey



10.5mm x 1.8m
(13/32" x 5'11")

Snap Track - Low Profile

2 part low profile snap track can be welded to join rolls end to end or side to side for large area covering.

Supplied with cold welding paste.

Colour: Dark Grey

Tuff Spun Wear and Tuff Spun Deck

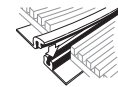


14mm x 60mm x 10.1m
(9/16" x 2 1/2" x 33')

60mm PVC edging strip

Supplied in rolls of 10.1m (33') length with cold welding paste.

Colours: Black, Dark Grey, Dark Brown, Holly Green, Oxford Blue, Yellow



14mm x 2.5m
(9/16" x 8'2")

Snap Track

2 part snap track can be welded to join rolls end to end or side to side for large area covering.

Supplied with welding paste.

Colour: Dark Grey

For large and small floor areas

Our matting is available in module and roll format enabling versatile usage:

- Large floor areas
- Runners alongside work stations
- Single modular mats for individual work stations.

For more complex areas, the matting is easy to cut to shape and install.



Runner alongside work station



Work station module mat

Edging Options

Standard length rolls and modules of foam or foam/wear layer combination are supplied with integral edging on all 4 sides.



Integral Edging



PVC Edging



Field Edging

Foam only products (Tuff Spun, Tuff Spun Wear, Tuff Spun Deck and Zed Land) if cut on site and used as part rolls, require PVC edging strips (10mm or 14mm heights) to achieve an edging on cut ends.

Dual layer products (Sparksafe, ZedTred and Zed Chex) if cut on site and used as part rolls, require a field edge to be fabricated. Simply cut back and remove the underside foam, so that the top wear layer creates a sloped finish.

Barefoot and Wetside

SAFETY MATTING

- ◆ Introduction **33**
- ◆ International Applications **34 - 35**
- ◆ Heronrib **36**
- ◆ Herontile **37**
- ◆ Floorline **38**
- ◆ Floorline Water Polo **39**
- ◆ PillogriD **40**
- ◆ Ancillaries **41**



www.plastexmatting.com

Why Plastex barefoot & wetside matting?

All-round safety, comfort and hygienic performance.

The combination of bare feet and water provides potentially high risk areas for slips. Humid environments with direct skin contact mean continuous hygiene is crucial.

Our barefoot & wetside matting products are specifically designed to:

- **Reduce slip and fall accidents**
- **Protect from fungal and bacterial contamination**
- **Provide underfoot comfort**

Plastex barefoot & wetside matting features a non-porous construction, excellent drainage, high slip resistance and permanent anti-microbial and anti-fungal options.

Supplied in either loose laid rolls or interlocking tiles.

Rolls are 10m long and flexible in construction, allowing ease of installation, one piece large covering and cutting to shape and size on site.

Which Plastex product is right for you?

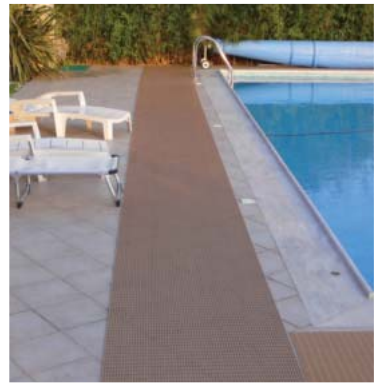
The chart below will help you choose the right mat for the right reasons, but if you have any questions contact us - we'll be delighted to help.

PRODUCT	SLIP RESISTANCE	WEAR	HYGIENE	DRAINAGE	COMFORT	USAGE
WET AREA SAFETY MATTING						
Heronrib p. 36						For extensive barefoot traffic. Use inside or out.
Floorline p. 38						For drier walkways. Use inside or out.
Floorline Water Polo p. 39						For water polo field marking and slip resistance.
Herontile p. 37						For large wet areas. Use inside only.
WET AREA IMPACT MATTING						
PillogriD p. 40						Phenomenal drainage with a soft landing.

HYGIENE, SAFETY AND



COMFORT - INSIDE OR OUT



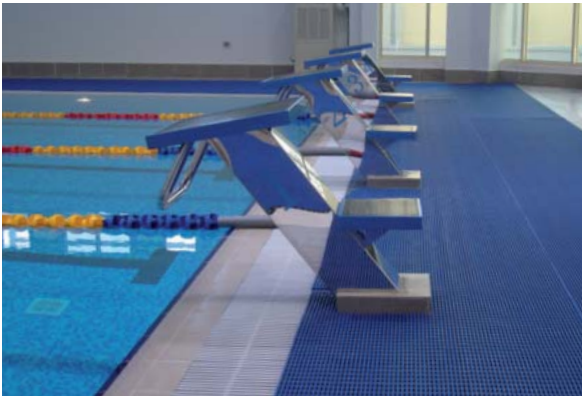
ALL REASONS

HERONRIB

Hygienic, comfortable, self-draining barefoot matting

The ultimate sports and leisure matting for use in wet areas where barefoot traffic is extensive.

Made from strong, non-porous PVC with channelled underbars, Heronrib will automatically self drain even the largest amounts of water. It is therefore perfect to dissipate a splash while creating one around swimming pools, saunas, jacuzzis and other wet areas with the many available attractive Heronrib colours.



BENEFITS

- Certified slip resistance **DIN 51097: C** **ASTM I677: 0.9/0.7**
- 4 way drainage
- Excellent hygiene
- Easy to cut and clean, contours to uneven surfaces
- Quick to install
- UV resistant
- Fire resistant
- Enhanced branding or styling

FEATURES

- Embossed surface
- Two layer construction and channelled underbars
- Anti-microbial and anti-fungal additives
- Made from flexible PVC
- Supplied in 10m rolls
- Can be used indoor or outdoor*
- Certified **EN 13501: Cfl - S1**
- 6 standard colours

STANDARD COLOURS



OXFORD BLUE



OCEAN BLUE



CHARCOAL GREY



FOREST GREEN



MULBERRY RED*



WHITE

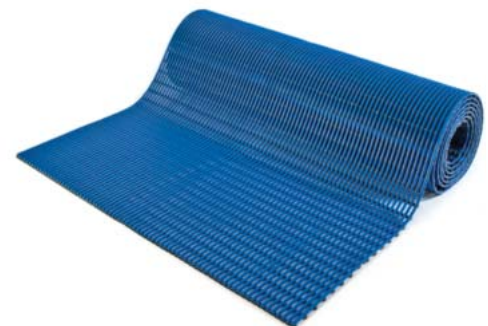
Other colours available on request.

* Mulberry Red colour is not colourfast in direct sunlight.

STANDARD SIZES

PRODUCT	HEIGHT	STANDARD ROLL OPTIONS**		
Heronrib	10.5mm (13/32")	10 x 0.5m (33' x 1'8")	10 x 1m (33' x 3'3")	10 x 1.22m (33' x 4')

**Contact us for bespoke dimensions.



HERONTILE



Barefoot wet area tiling

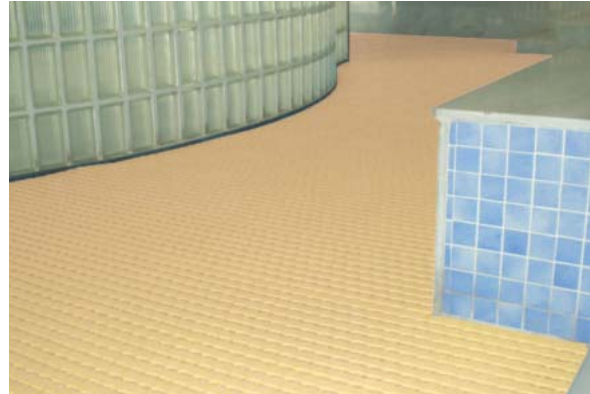
For coverage of large floor areas seamlessly and easily.

Herontile provides a hygienic, safe and attractive surface with permanent anti-fungal and antibacterial additives.

Herontile is made from an Ethylene Vinyl Acetate (EVA)* composition to guarantee softness and comfort. It also has a circular surface embossing for enhanced slip resistance and stands 15mm (5/8") high on strong support legs so that water disperses well underneath.

*Note: EVA is only suitable for indoor applications.

Available in four bright, stable and appealing colour options which are complementary to interior schemes.



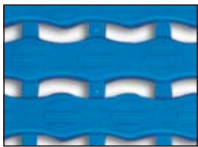
BENEFITS

- Certified slip resistance **DIN 51097: C**
- Excellent drainage
- Hygienic
- Barefoot comfort
- Easy and quick coverage of large floor areas
- Finished areas
- Can be rolled up for easy underneath cleaning & maintenance
- Enhanced branding or styling

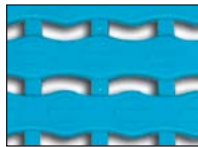
FEATURES

- Embossed surface
- 15mm (5/8") height
- Anti-microbial and anti-fungal additives
- Soft Ethylene Vinyl Acetate (EVA) composition
- Simple, click together joining mechanism
- PVC ramped edging
- Flexible construction
- 4 standard colors

STANDARD COLOURS



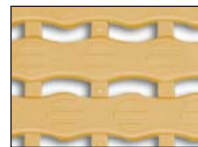
OCEAN BLUE



LIGHT BLUE



LIGHT GREY

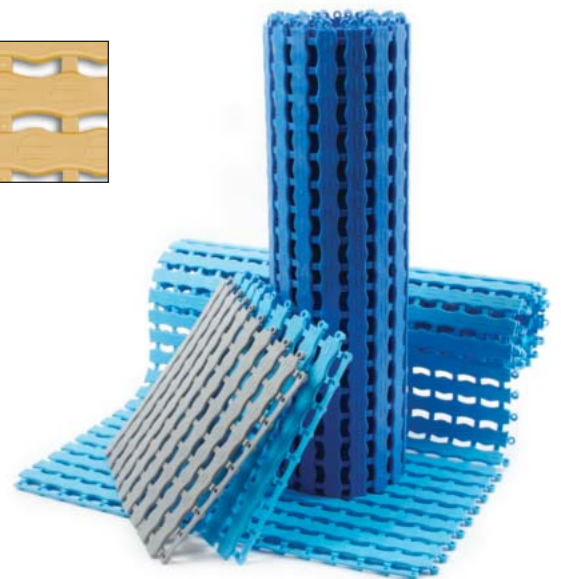


BEIGE

STANDARD SIZES

PRODUCT	HEIGHT	STANDARD TILE SIZE
Herontile	15mm (5/8")	33 x 33mm (13" x 13")

Available in packs of 27 tiles.



FLOORLINE

Light duty, self-draining safety

An economical and hygienic matting for light traffic changing areas and swimming pool surrounds.

Soft underfoot and decorative to look at, yet hardwearing in residential and lower traffic wetside areas, Floorline is an ideal matting solution which can be used where slip resistance is required both indoors and outdoors. Incorporates anti-microbial and anti-fungal additives for a continuous hygiene.



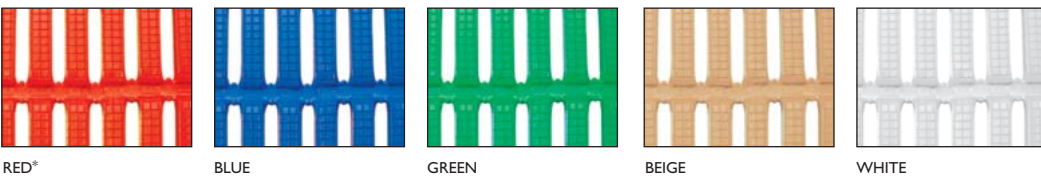
BENEFITS

- Certified slip resistance
DIN 51130: R11 DIN 51097: C ASTM 1677: 1.0/0.8
- Excellent drainage DIN 51130: V10
- Excellent hygiene
- Easy to cut on site, contours to uneven surfaces
- Quick to install
- UV resistant
- Fire resistant
- Adapt to your branding or styling

FEATURES

- Etched surface
- Open grid construction
- Anti-microbial & anti-fungal additives
- Made from flexible PVC
- Supplied in 10m rolls
- Can be used indoor or outdoor*
- Certified EN 13501: Cf1 - S1
- 5 standard colours

STANDARD COLOURS

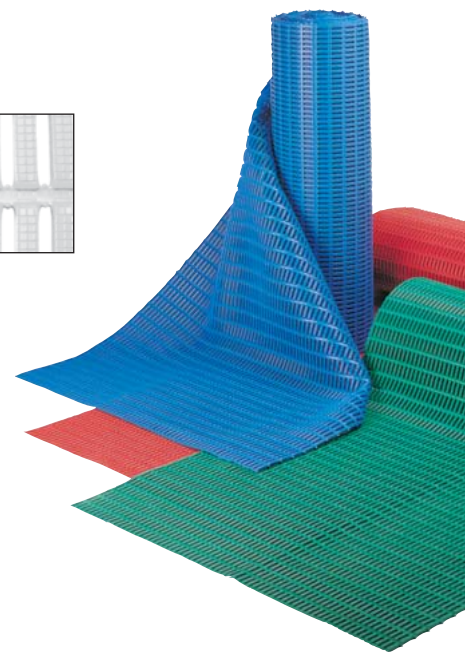


Other colours available on request. * Red colour is not colourfast in direct sunlight.

STANDARD SIZES

PRODUCT	HEIGHT	STANDARD ROLL OPTIONS**	
Floorline	6mm (1/4")	10 x 0.6m (33' x 2')	10 x 0.91m (33' x 3')

**Contact us for bespoke dimensions.



FLOORLINE WATER POLO

The field marking matting

An efficient dual purpose field marking system easily applied and removed to increase visibility of the field lines while ensuring safe pool side traffic thanks to its slip resistant properties.

Floorline Water Polo matting is very convenient to use at public polo sessions, being light, quick, easy to install and remove for subsequent storage.

Floorline Water Polo matting is supplied as a one piece tri-coloured 15m roll (green, yellow and red), acting as a field marking solution whilst ensuring continued safety underfoot for the referee even when the matting is wet.



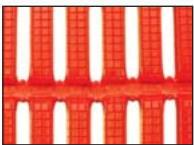
BENEFITS

- Certified slip resistance
DIN 51130: R11 DIN 51097: C ASTM 1677: 1.0/0.8
- Excellent drainage DIN 51130: V10
- Excellent hygiene
- Quick to lay down for field set-up
- Increase visibility of field marking lines
- Easy to store and carry
- UV resistant
- Fire resistant

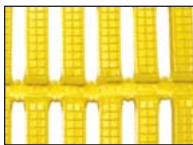
FEATURES

- Etched surface
- Open grid construction
- Anti-microbial & anti-fungal additives
- Made from flexible PVC, supplied in one piece roll
- Tri-coloured one piece roll:
Green (10m), yellow (3m) and red (2m)
- 38cm diameter when rolled
- Can be used indoor or outdoor*
- Certified EN 13501: Cfl - S1

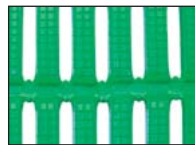
STANDARD COLOURS



RED*



YELLOW



GREEN

* Red colour is not colourfast in continual direct sunlight.

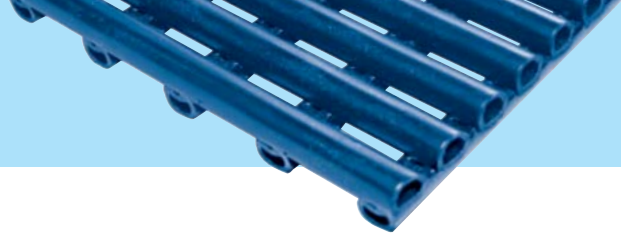
Floorline Water Polo is a Tri-Coloured mat, making up the three colours of red, yellow and green.

STANDARD SIZES

PRODUCT	HEIGHT	STANDARD ROLL OPTIONS**	
Floorline Water Polo	6mm (1/4")	15 x 0.6m (49' x 2')	15 x 0.91m (49' x 3')

**Contact us for bespoke dimensions.

PILLOGRID



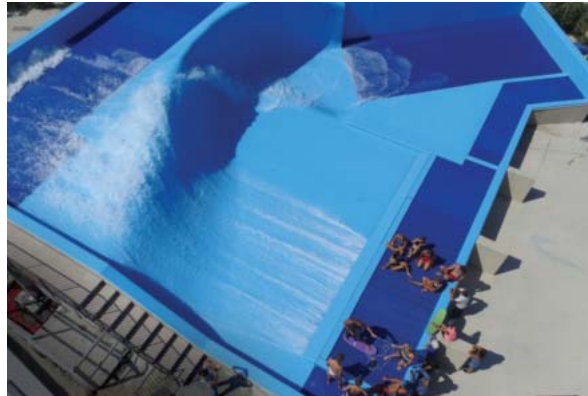
Cushioning matting for wave simulators

A large open grid and soft vinyl with hollow profile combining phenomenal drainage with a soft landing.

Placed over metal grates at the back and front of surfing machines, PillogriD matting was specifically developed to provide excellent drainage and superior cushioning for aquatic safety.

Large roll format further adds to safety by removing the need for joints in action areas.

This matting can be supplied in factory welded panels for quick and easy installation on aquatic attractions.



BENEFITS

- Soft landing
- High volume drainage
- Highly resistant
- Easy to cut on site, contours to uneven surfaces
- Quick to install
- UV resistant
- Hard wearing
- Hygienic

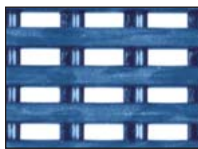
FEATURES

- Hollow tube construction
- Large open grid format
- "D" profile for maximum weld strength
- Made from flexible PVC
- Supplied in rolls or fabricated panels
- Can be used indoor or outdoor
- All welded construction
- All flexible PVC construction

STANDARD COLOURS



BLACK



BLUE



STANDARD SIZES

PRODUCT	HEIGHT	STANDARD ROLL OPTIONS*			
PillogriD	20mm (3/4")	5 x 0.6m (16'6" x 2)	5 x 0.91m (16'6" x 3)	10 x 0.6m (33' x 2)	10 x 0.91m (33' x 3)

*Contact us for bespoke dimensions.

Barefoot & wetside matting and tiling ancillaries

Heronrib

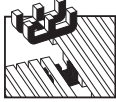


10mm x 50mm x 10.1m
(3/8" x 2" x 33')

50mm PVC edging strip

Supplied in rolls of 10.1m (33') length with cold welding paste.

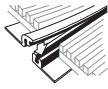
Colours: Black, Dark Grey



Connector clips - dual purpose

For joining sections of matting together side to side or end to end.

Supplied in packs of 10.



10.5mm x 1.8m
(13/32" x 5'11")

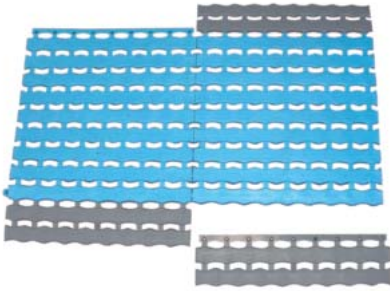
Snap Track - Low Profile

2 part low profile snap track can be welded to join rolls end to end or side to side for large area covering.

Supplied with cold welding paste.

Colour: Dark Grey

Herontile



EVA ramped edging

Snap-on edging supplied in 33cm lengths (13")

Colours: Dark Grey, Ocean Blue

15mm x 7cm x 33cm
(5/8" x 2 3/4" x 13")

PillogriD



5m (16') on the shorter of 2 dimensions x physical weight of panel @ 7.1 kg/sq.m (1.45 lb/sq.ft)

Bespoke size panels

Plastex can supply aquatic attraction manufacturers with prefabricated robot welded panels. The maximum dimension of these panels is 5m (16') on the shorter of the length or width. Consideration should also be given to handling and shipping of the overall weight of the fabricated panel. PillogriD weighs 7.1kg/sq.m (1.45lb/sq.ft).

Frontrunner Entrance Flooring Systems

- ◆ Why Entrance Matting 43
- ◆ International Applications 44
- ◆ Product Comparison 45
- ◆ Frontrunner Entry 46
- ◆ Frontrunner XT 47
- ◆ Frontrunner Brush 48
- ◆ Frontrunner Brush Wide 49
- ◆ Frontrunner Plus 50
- ◆ Frontrunner Plus Custom Logos 51
- ◆ Insert Colours 52 - 53
- ◆ Frontrunner SB 54
- ◆ Frontrunner SB+ 55
- ◆ Surface Modules 56 - 57
- ◆ Recessed Ancillaries & Installation Instructions 58 - 59
- ◆ Surface Mounted Ancillaries & Installation Instructions 60 - 61



www.plastexmatting.com

Why is Entrance Flooring important?

Choosing the right entrance flooring matters for three good reasons:

- Style
- Health and Safety
- Cleanliness and Durability

Style

Your entrance flooring is, by definition, one of the first things clients and visitors see; so it plays a vital role in creating first impressions. As you'll see from the location pictures in this brochure our range of colours, custom logos, styles and tread patterns will make sure you get it right.

Health and Safety

Unfortunately, we live in a litigious age which is why it's good to know the Frontrunner entrance matting products are tested under DIN 51130 and achieved ratings as high as R12. This means they have been tested to be slip resistant at an angle of 27°, even when wet. This translates to peace of mind that your entrance flooring system is independently tested giving a performance safe entrance flooring. Additionally, the Frontrunner Entrance Flooring System conforms to the requirements of the BS 8300:2009 Design of buildings and their approaches to meet the needs of disabled people.

Cleanliness and Durability

Up to 80% of dirt comes into your building on shoes or wheels. All Frontrunner entrance flooring is designed to remove, trap and hide this dirt from the traffic areas until it is easily removed during cleaning.

Our flooring deals with dirt so effectively that it will expand the life of your internal floor finishes and will help reduce your cleaning intervals. Frontrunner's one piece welded roll format ensures a durable and effective product. For further peace of mind, many of the installations shown in this brochure have been in place for ten years or more and still look as good as the day they were fitted.

Why Frontrunner Entrance Flooring System?

- 100% recyclable and REACH* compliant vinyl grid
- Meets the requirements of the UK Disability Discrimination Act - BS 8300:2009
- Excellent Fire rating - EN & ASTM
- Available in rolls for seamless, quick and easy installations on-site
- Loose lay open grid construction removes dirt from traffic area and eases cleaning
- R12 slip resistance rating under DIN 51130 on Frontrunner XT and R11 rating on Frontrunner Entry, Frontrunner SB and Frontrunner SB+
- Frontrunner Plus available in 50 different colour combinations. May also be customised with the incorporation of a logo panel
- It qualifies for IEQ Credit 5: Indoor Chemical and Pollutant Source Control LEED 2009 for New Construction and Major Renovations Rating System



ISO 9001 accredited (since 1993) ensures quality entrance flooring systems that are fit for purpose.



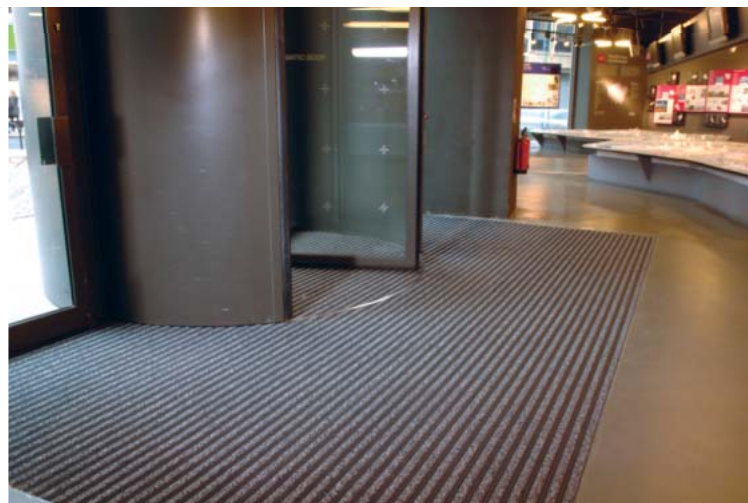
Founder Member

Directive EC 1907/2006 – Annex I



* Registration, Evaluation, Authorisation and Restriction of Chemical substances.

FRONTRUNNER ENTRANCE FLOORING SYSTEM



Vinyl Entrance Flooring System for high traffic areas

Recommended and Installed Worldwide for:

- Hotels • Hospitals • Industrial sites • Leisure facilities
- Office/Banks • Public buildings • Restaurants
- Retail locations • Schools • Supermarkets



Which Frontrunner Entrance Flooring System is right for you?

Depending on the surface you are looking to cover and amount of traffic, we recommend choosing a primary matting for effective removal of dirt and a secondary matting for removal of any residual dirt and drying of moisture.

PRODUCT	FRONT/ SIDE ELEVATION	SLIP RESISTANCE	SCRAPER	MOISTURE REMOVAL	LOCATION	USAGE
VINYL OPEN GRID CONSTRUCTION - PRIMARY MATTING						
Frontrunner Entry Frontrunner Entry Low Profile p. 46					B	High traffic internal areas.
Frontrunner XT p. 47					A <small>(also ideal for walkways, balconies and decking)</small>	High traffic internal or external areas.
VINYL OPEN GRID CONSTRUCTION WITH BRUSH INSERTS - PRIMARY MATTING						
Frontrunner Brush p. 48					A	Maximum dirt removal in internal/external areas.
Frontrunner Brush Wide p. 49					A	Larger debris removal in external areas.
VINYL OPEN GRID CONSTRUCTION WITH ABSORBENT INSERTS - SECONDARY MATTING						
Frontrunner Plus Frontrunner Plus Low Profile p. 50					B C	Maximum moisture removal in high traffic internal areas.
VINYL OPEN RIBBED CONSTRUCTION WITH A SOLID BACK - SECONDARY MATTING						
Frontrunner SB p. 54					B	Surface mounted in high traffic internal areas.
Frontrunner SB+ p. 55					B C	Surface mounted moisture removal in high traffic internal areas.



FRONTRUNNER ENTRY

Open grid, slip resistant and heel-proof matting

A uniquely effective matting to help prevent dirt from entering buildings in high traffic internal areas.

The aggressive diamond tread pattern scrapes dirt off shoes, whilst the 14mm (9/16") open grid structure allows it to fall out of the way. This efficient, high quality, 'scrape and clean' system also protects internal floor coverings and significantly reduces cleaning costs.

The special close space design of the open grid bars also allows the product to be heel proof and suitable for wheel chairs, shopping trolleys and other small wheeled traffic. Frontrunner Entry can be used in combination with other products from the Frontrunner Entrance Flooring System range for a complete interior and exterior entrance matting solution.



BENEFITS

- Certified slip resistance **DIN 51130: R11** **ASTM 1677: 0.6/0.6**
- Excellent drainage **DIN 51130: V10**
- Fire resistant
- Easy to maintain
- Seamless, quick and easy installations
- Easy to cut on site, contours to uneven surfaces
- Heel and wheel-proof
- Enhanced branding on styling

FEATURES

- Diamond cut pattern
- Two layer open grid construction
- EN 13501 - 1 : 2007- Bfl - S1** **ASTM E648: Class I**
- Can be rolled up or lifted for cleaning
- Supplied in 10m (33') rolls - modules also available
- Made from flexible PVC
- Close mesh grid matting
- 5 standard grid colours

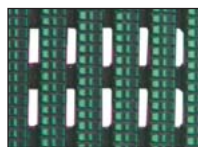
STANDARD COLOURS



DARK GREY



DARK BROWN



HOLLY GREEN



OXFORD BLUE



BLACK

Other colours available on request.

Frontrunner Entry Low Profile

A low profile 10.5mm (13/32") option that aligns with standard ceramic floor tiles and carpets in recessed applications. This can prevent the need for creating a deeper matwell in an existing subfloor in order to accommodate the entrance matting system.

STANDARD SIZES

PRODUCT	HEIGHT	STANDARD ROLL OPTIONS			STANDARD MODULE OPTIONS*		
Frontrunner Entry	14mm (9/16")	10 x 0.6m (33' x 2')	10 x 0.91m (33' x 3')	5 x 1.2m (16' 6" x 4')	0.8 x 1.2m (2' 7" x 3' 11")	1 x 1.5m (3' 3" x 4' 11")	1.1 x 2m (3' 7" x 6' 7")
Low Profile	10.5mm (13/32")	10 x 0.6m (33' x 2')	10 x 0.91m (33' x 3')	5 x 1.2m (16' 6" x 4')			

*Surface modules are supplied with factory fitted PVC ramped edging to four sides.

FRONTRUNNER XT

Extra slip resistant and heel-proof entrance matting

An entrance matting with a deeper etched tread for interior and exterior high traffic applications.

With all the features of Frontrunner Entry, Frontrunner XT has an extra aggressive, deep etched tread to give additional underfoot traction in outdoor applications and to remove the heaviest amounts of undershoe dirt and debris.

Frontrunner XT has therefore been successfully used where walkways and entrances are prone to becoming slippery and hazardous in wet conditions, and in particular on hardwood decking, bridges and general outdoor pedestrian areas.



BENEFITS

Certified slip resistance **DIN 51130: R12**

Excellent drainage **DIN 51130: V10**

Fire resistant

Easy to maintain

Seamless, quick and easy installations

Easy to cut on site, contours to uneven surfaces

Heel and wheel-proof

Enhanced branding or styling

FEATURES

Diamond cut pattern

Two layer open grid construction

EN 13501 - 1 : 2007- Bfl - S1

Can be rolled up or lifted for cleaning

Supplied in 10m (33') rolls

Made from flexible PVC

Close mesh grid matting

3 standard grid colours

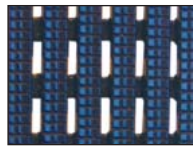
STANDARD COLOURS



DARK GREY



BLACK



OXFORD BLUE

STANDARD SIZES

PRODUCT	HEIGHT	STANDARD ROLL OPTIONS*		
Frontrunner XT	14mm (9/16")	10 x 0.6m (33' x 2')	10 x 0.91m (33' x 3')	5 x 1.2m (16'6" x 4')

*To ensure maximum flexibility and convenience, Frontrunner entrance matting system can be delivered in rolls or cut to size.



FRONTRUNNER BRUSH

Slip resistant entrance matting with brush inserts

For maximum moisture and dirt removal in external areas.

The brush strips with bristles will scour snow, mud and other heavy contaminants from the shoe, boot or wheel, helping to keep dirt from entering buildings, even under the most extreme weather conditions.

Frontrunner Brush works as a 'stand alone' module or in combination with other Frontrunner Entrance Flooring Systems.



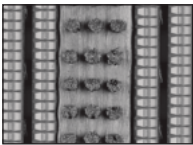
BENEFITS

- High soil removal and slip resistance
- Excellent drainage
- Excellent scraping
- Fire resistant
- Easy to maintain
- Seamless, quick and easy installations
- Easy to cut on site, contours to uneven surfaces

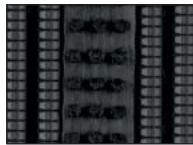
FEATURES

- Diamond cut pattern
- Two layer open grid construction
- Nylon brush inserts
- EN 13501 - 1 : 2007- Cfl - S2
- Can be rolled up or lifted for cleaning
- Supplied in 10m (33') rolls - modules also available
- Made from flexible PVC

STANDARD COLOURS



DARK GREY



BLACK



STANDARD SIZES

PRODUCT	HEIGHT	STANDARD ROLL OPTIONS*			STANDARD MODULE OPTIONS**		
Frontrunner Brush	14-19mm (9/16" - 3/4")	10 x 0.6m (33' x 2')	10 x 0.91m (33' x 3')	5 x 1.2m (16' 6" x 4')	0.8 x 1.2m (2'7" x 3'11")	1 x 1.5m (3'3" x 4'11")	1.1 x 2m (3'7" x 6'7")

*Contact us for bespoke dimensions.

**Surface modules are supplied with factory fitted PVC ramped edging to four sides.

FRONTRUNNER BRUSH WIDE

Extra wide grid matting with brush inserts

For large debris removal in external areas.

Icy and snowy winter months can be characterised by a lot of gravel, shingle or stones.

With similar properties to Frontrunner Brush, but with a wider grid that allows larger debris such as small stones, snow and ice to fall through and be contained.

It works either as a stand alone or can be interchanged with another Frontrunner system in summer months to provide the complete entrance solution.



BENEFITS

Ideal for removing salt, shingle or gravel

High soil removal and slip resistance

Excellent drainage

Excellent scraping

Fire resistant

Easy to maintain

Seamless, quick and easy installations

Easy to cut on site, contours to uneven surfaces

FEATURES

Extra wide grid

Diamond cut pattern

Two layer open grid construction

Nylon brush inserts

EN 13501 - 1 : 2007- Cl1 - S1

Can be rolled up or lifted for cleaning

Supplied in 10m (33') rolls - modules also available

Made from flexible PVC

STANDARD COLOURS



DARK GREY



BLACK



STANDARD SIZES

PRODUCT	HEIGHT	STANDARD ROLL OPTIONS*			STANDARD MODULE OPTIONS**		
Frontrunner Brush Wide	14-19mm (9/16" - 3/4")	10 x 0.6m (33' x 2)	10 x 0.91m (33' x 3)	5 x 1.2m (16'6" x 4)	0.8 x 1.2m (2'7" x 4)	1 x 1.5m (3'3" x 4'11")	1.1 x 2m (3'7" x 6'7")

*Contact us for bespoke dimensions.

**Surface modules are supplied with factory fitted PVC ramped edging to four sides.

FRONTRUNNER PLUS



Open grid entrance matting with absorbent inserts

Maximum removal of residual dirt and moisture in high traffic internal areas.

Protects your internal floorings and reduces cleaning costs.

Frontrunner Plus, available in two heights, is an open grid vinyl construction is not only heel-proof and wheelchair friendly, but also effectively removes, retains and dries soil and moisture from underfoot thanks to its slip resistant surface and absorbent inserts. The positioning of the scraper bars on Frontrunner Entrance Flooring System can be varied to allow the incorporation of a logo panel. The system is of one-piece vinyl construction and is therefore both quiet underfoot and ideal for use in conjunction with under floor and upright loss prevention systems.



BENEFITS

- High soil removal & slip resistance
- Excellent drainage
- Maximum moisture removal
- Fire resistant
- Easy to maintain
- Seamless, quick and easy installations
- Easy to cut on site, contours to uneven surfaces
- Heel and wheel-proof
- Reduces the need of a deeper matwell
- Enhanced branding or styling

FEATURES

- Diamond cut pattern
- Two layer open grid construction
- Absorbent inserts
- Certified EN 13501 - 1 : 2007- Cl1 - S2 ASTM E648 : Class I
- Can be rolled up or lifted for cleaning
- Supplied in 10m (33') rolls - modules also available
- Made from flexible PVC
- Close mesh grid matting
- Available in a low profile 10.5mm (13/32") option
- Up to 50 different colour combinations available

STANDARD COLOURS

For grid colours and carpet colour combinations please see pages 52-53.

STANDARD SIZES

PRODUCT	HEIGHT	STANDARD ROLL OPTIONS*			STANDARD MODULE OPTIONS**		
Frontrunner Plus	14 - 16mm (9/16" - 5/8")	10 x 0.6m (33' x 2')	10 x 0.91m (33' x 3')	5 x 1.2m (16'6" x 4')	0.8 x 1.2m (2'7" x 3'11")	1 x 1.5m (3'3" x 4'11")	1.1 x 2m (3'7" x 6'7")
Low Profile	10.5 - 12mm (13/32" - 1/2")	10 x 0.6m (33' x 2')	10 x 0.91m (33' x 3')	5 x 1.2m (16'6" x 4')			

*Contact us for bespoke dimensions.
**Surface modules are supplied with factory fitted PVC ramped edging to four sides.

Frontrunner Plus Low Profile

A low profile 10mm (13/32") option that aligns with standard ceramic floor tiles and carpets in recessed applications without the need to create a deeper matwell in an existing subfloor.

CUSTOM LOGOS

The positioning of the scraper bars on Fronrunner Entrance Flooring Systems can be varied to allow the incorporation of a logo panel.

Logo panels are achieved by die cutting with another compatible high quality absorbent insert, giving a permanent and colourfast message.

Logo panels run the width of the matwell and are either 30 or 45cm tall, providing a highly visible message in the all important 'first impression' area.

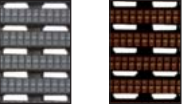
Fronrunner Entrance Systems incorporating logos can be supplied for recessed systems or surface mounted modular mats.



DESIGN COMBINATIONS

Frontrunner Plus is available in a choice of 5 grid colours and 10 coordinating absorbent insert colours. Shown below is each absorbent insert swatch with the most popular grid choice and the 5 alternative grid colours available.

ALTERNATIVE
GRID COLOURS:



Dark Grey Dark Brown



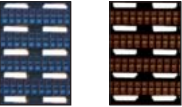
Holly Green Black



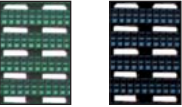
Dark Grey Dark Brown



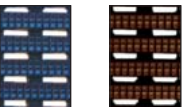
Oxford Blue Black



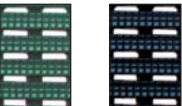
Oxford Blue Dark Brown



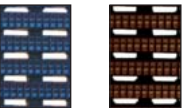
Holly Green Black



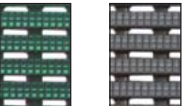
Oxford Blue Dark Brown



Holly Green Black

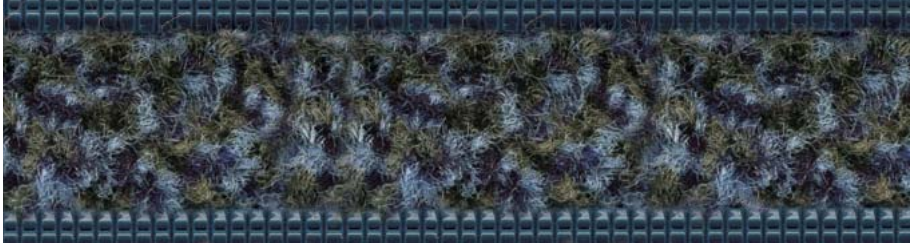


Oxford Blue Dark Brown



Holly Green Dark Grey

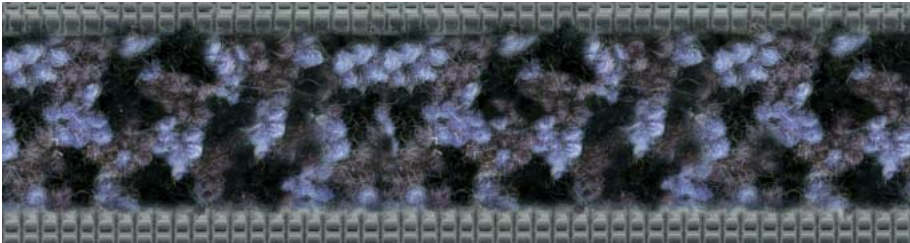
INSERT: **BASALT**
GRID SHOWN: **OXFORD BLUE**



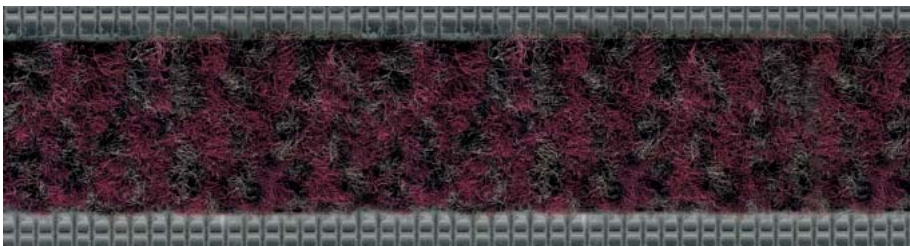
INSERT: **80/20+ GREEN***
GRID SHOWN: **HOLLY GREEN**



INSERT: **80/20+ GREY***
GRID SHOWN: **DARK GREY**



INSERT: **SANDSTONE**
GRID SHOWN: **DARK GREY**



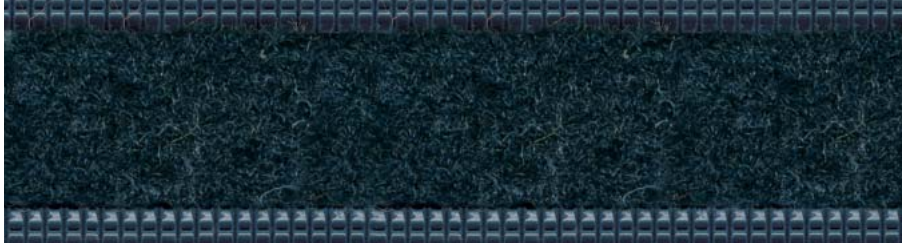
INSERT: **SLATE**
GRID SHOWN: **BLACK**



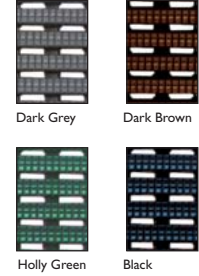
* 80% wool, 20% nylon and nylon monofilament scrapers.

This provides a combination of 50 differing colourways designed to create the optimum choice for today's interior designer and specifier alike. (See www.plastexmatting.com/frontrunner-plus.html for full specifications).

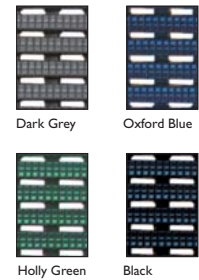
INSERT: 602
 GRID SHOWN: OXFORD BLUE



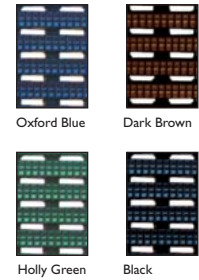
ALTERNATIVE
 GRID COLOURS:



INSERT: 605
 GRID SHOWN: DARK BROWN



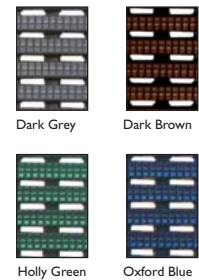
INSERT: 606
 GRID SHOWN: DARK GREY



INSERT: 607
 GRID SHOWN: BLACK



INSERT: 608
 GRID SHOWN: BLACK



FRONTRUNNER SB

Vinyl ribbed, solid backed entrance matting

Laid directly on top of sub-floor, Frontrunner SB, being 6.5mm thick, removes the need for a matwell and fits easily within existing floor coverings or surrounded by carpet tiles.

Frontrunner SB's ribbed pattern scrapes dirt at the entrance area, which is effectively contained away from the traffic area. The solid backing and ribbed construction enable quick and effective vacuuming.

Frontrunner SB can also be used on top of current flooring with ramped edging to provide a slip resistant walkway.



BENEFITS

- Certified slip resistance **DIN 51130: R11** **ASTM C1028: 0.6/0.6**
- Fire resistant
- Surface mounted
- Can be adhered to sub-floor in high traffic areas
- Easy to cut on site, contours to uneven surfaces
- Seamless, quick and easy installations
- Light to handle
- Heel and wheel-proof
- Rolling resistance

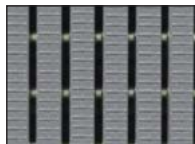
FEATURES

- Etched pattern
- Certified **EN 13501 - I : 2007- Cfl - S1** **ASTM E648: Class 2**
- 6.5mm (17/64") grid height
- Solid backing
- Made from flexible PVC
- Supplied in 10m (33') and 20m (66') rolls
- One layer hollow construction
- Close mesh grid matting
- ASTM F2753:** No apparent damage to the vinyl portion of the system after 1,000 cycles at 500lbs

STANDARD COLOURS



BLACK



GREY



STANDARD SIZES

PRODUCT	HEIGHT	STANDARD ROLL OPTIONS	
Frontrunner SB	6.5mm (17/64")	10 x 1m (33' x 3'3")	20 x 1m (66' x 3'3")

FRONTRUNNER SB+

Vinyl ribbed, solid backed entrance matting with carpet inserts

Without the need of a recessed matwell, Frontrunner SB+ cleans, scrapes and dries dirt and moisture at the entrance.

In addition to Frontrunner SB's ribbed pattern that scrapes dirt off shoes and solid back for containment of dirt, Frontrunner SB+ has added absorbent inserts with monofilament scrapers to remove moisture at the entrance.

Featuring a grid of 6.5mm thickness, Frontrunner SB+ can either be laid directly on top of sub-floor or be used on top of current flooring with ramped edging.



BENEFITS

- Certified slip resistance **DIN 51130: R11** **ASTM 1677: 0.6/0.6**
- Maximum moisture removal
- Fire resistant
- Surface mounted
- Can be adhered to sub-floor in high traffic areas
- Easy to cut on site, contours to uneven surfaces
- Seamless, quick and easy installations
- Light to handle
- Heel and wheel-proof
- Rolling resistance

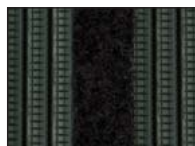
FEATURES

- Etched pattern
- Absorbent inserts with monofilament scrapers
- EN 13501 - I : 2007- Cf1 - SI** **ASTM E648: Class 2**
- 6.5mm (1/4") grid height
- Solid backing
- Made from flexible PVC
- Supplied in 10m (33') and 20m (66') rolls or modules
- One layer hollow construction
- Close mesh grid matting
- ASTM F2753: 0.080in** lost of thickness after 1,000 cycles at 500lbs

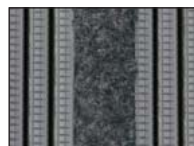
STANDARD COLOURS



BLACK WITH 607 INSERT



BLACK WITH 608 INSERT



GREY WITH 606 INSERT



GREY WITH 607 INSERT



STANDARD SIZES

PRODUCT	HEIGHT	STANDARD ROLL OPTIONS		STANDARD MODULE OPTION*
Frontrunner SB+	6.5/8mm (17/64-5/16")	10 x 1m (33' x 3'3")	20 x 1m (66' x 3'3")	1 x 1.5m (3'3" x 4'11")

*Surface modules are supplied with factory fitted PVC ramped edging to four sides.

FRONTRUNNER ENTRANCE

Frontrunner modules can be positioned in minutes and are available in three standard sizes as shown below, in a range of colours with factory fitted ramped edging to four sides.



Frontrunner Entry



Frontrunner Brush



Frontrunner Brush Wide



Frontrunner Plus



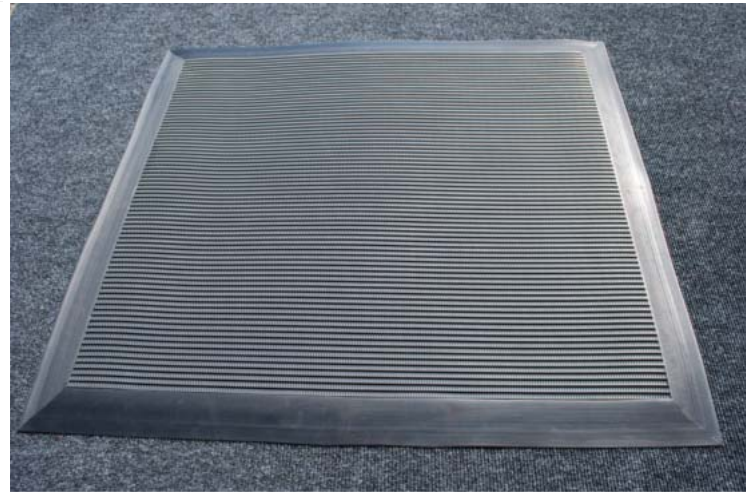
Frontrunner Plus



Frontrunner SB+

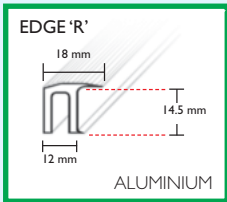
PRODUCT	HEIGHT	STANDARD MODULE OPTIONS		
Frontrunner Entry	14mm (9/16")	80 x 120cm (2'7" x 4')	100 x 150cm (3'3" x 4'11")	110 x 200cm (3'7" x 6'7")
Frontrunner Brush	19mm (3/4")	80 x 120cm (2'7" x 4')	100 x 150cm (3'3" x 4'11")	110 x 200cm (3'7" x 6'7")
Frontrunner Brush Wide	19mm (3/4")	80 x 120cm (2'7" x 4')	100 x 150cm (3'3" x 4'11")	110 x 200cm (3'7" x 6'7")
Frontrunner Plus	16mm (5/8")	80 x 120cm (2'7" x 4')	100 x 150cm (3'3" x 4'11")	110 x 200cm (3'7" x 6'7")
Frontrunner SB+	8mm (5/16")		100 x 150cm (3'3" x 4'11")	

FLOORING SURFACE MODULES

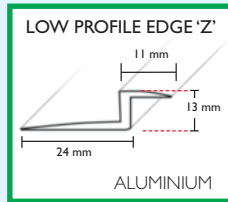
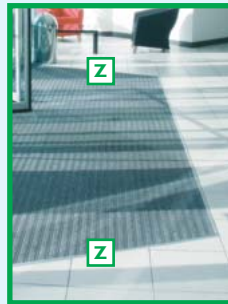


Recessed Ancillaries

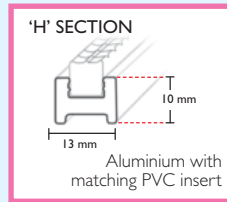
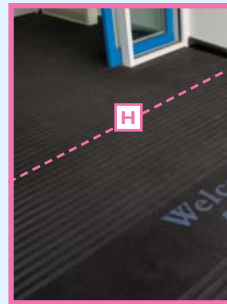
For recessed applications, a full range of frames and dividers are purposely designed to provide level and smooth transitions, and simple installations during actual entrance fit out. For full details visit www.plastexmatting.com/recessed-ancillaries.html



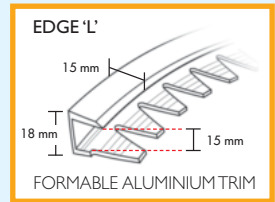
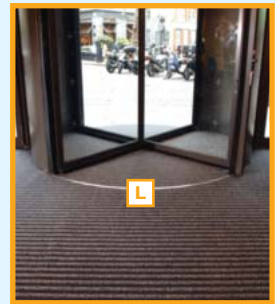
For left and right extremities of well to cap and secure ends of 14mm/10.5mm matting.



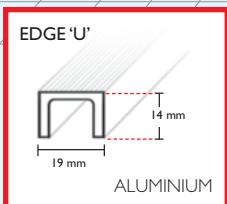
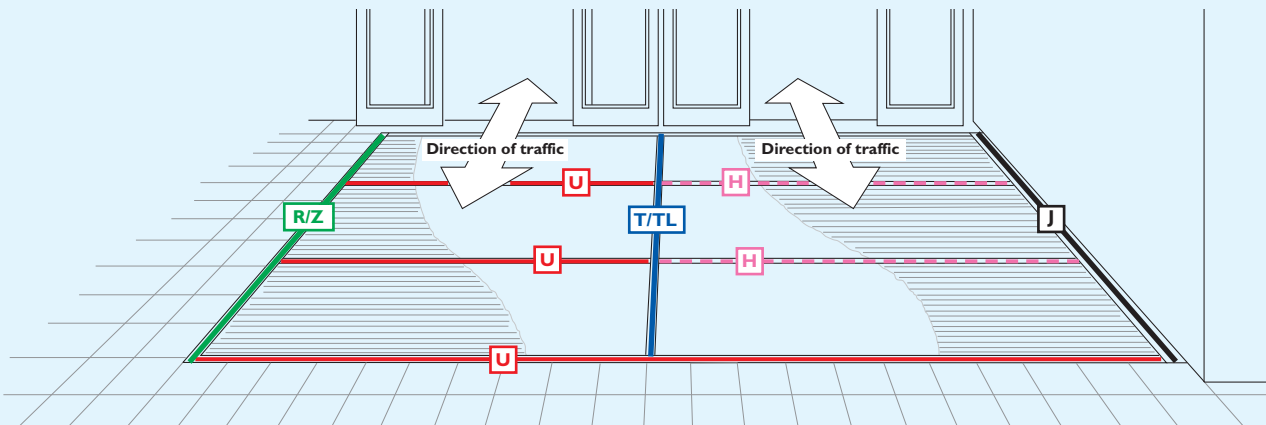
Used for left and right extremities of 10.5mm matting in conjunction with ceramic tiles.



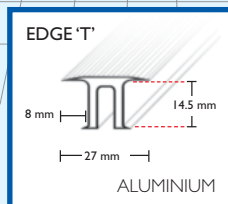
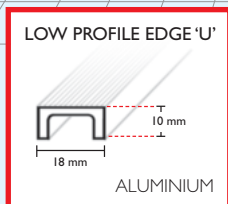
Used as "an invisible divider" for front to back installations of 14mm/10.5mm matting.



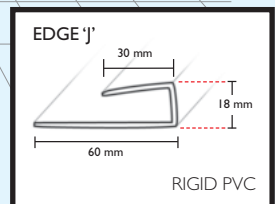
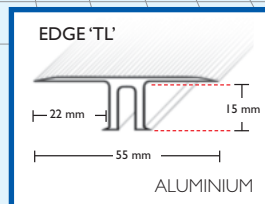
For circular door and non-rectangular installations of 14mm matting.



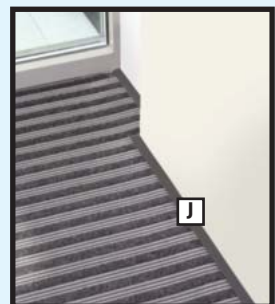
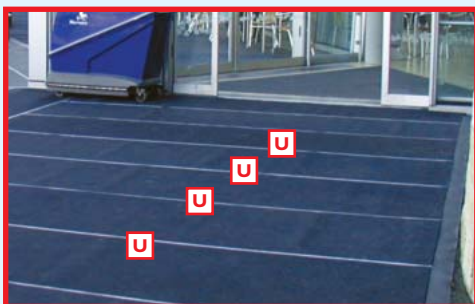
A front to back frame or divider used with 14mm/10.5mm matting.



Frames of different widths used as dividers for large left to right installations of 14mm matting.



For left and right extremities of well to cap and secure ends of 14mm matting when against a wall.



Aluminium frames are available in natural anodised finish. For design elegance and colour continuity, the U, R and T frames are also available in Dark Grey and Black. Edge J, in rigid PVC, is available in Dark Grey or Black.

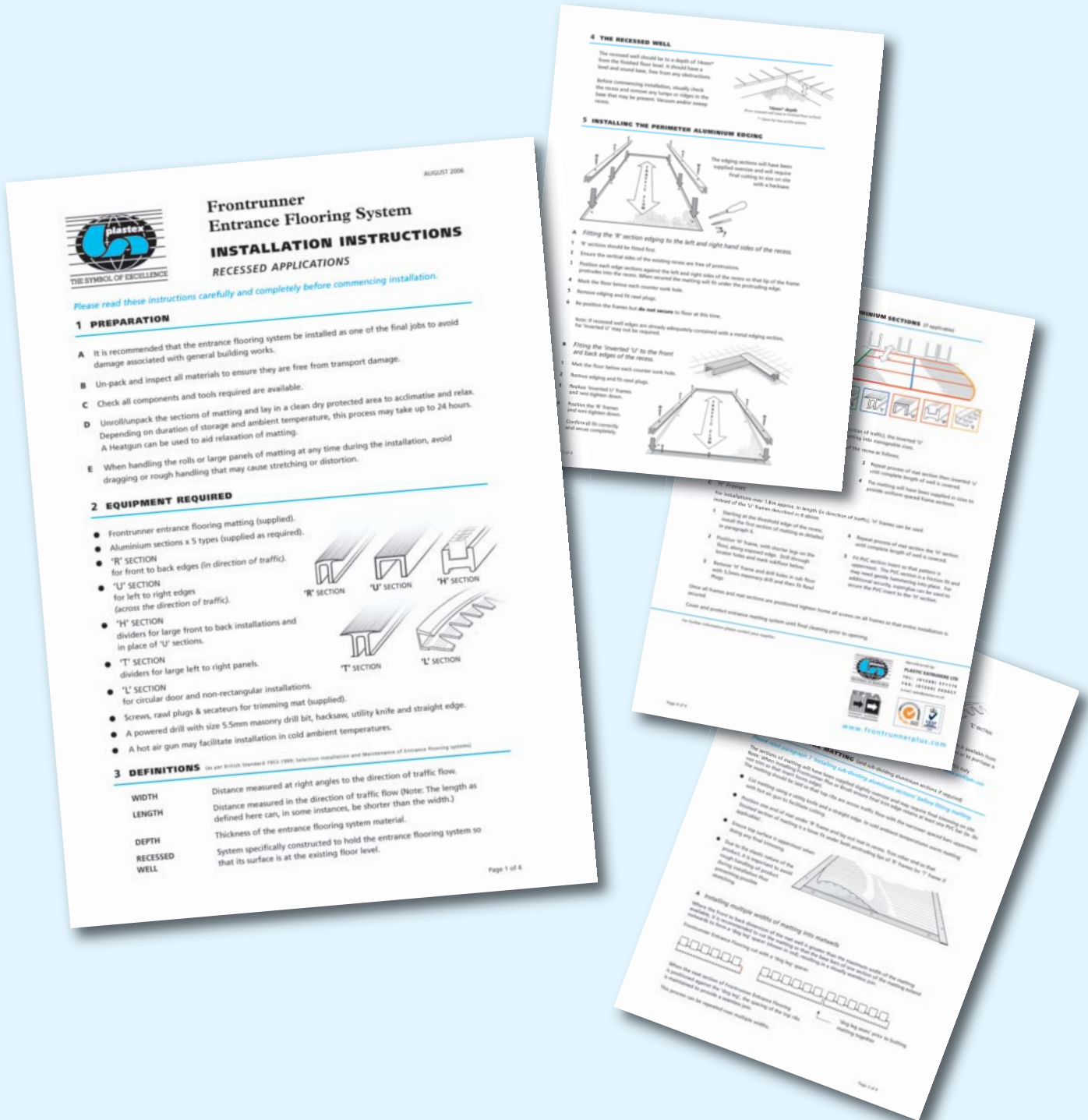
Recessed Installation Instructions

No advance templating is required - cut on site, save time and money

The Fronrunner Entrance Flooring System uses a simple but effective framing method, which is installed at the same time as the entrance flooring. As the system is supplied in rolls, the installation is quick and easy and does not require any advance templating. Additional visits to site for fitting the matwell frame when the floor slab is poured are also not required.

A range of frames are utilised where large areas of matting are to be installed. The frames are used to divide, cap and secure ends or form shaped edges where required (see page 58).

The simplicity of the Fronrunner Entrance Flooring System allows it to be installed by flooring professionals nationwide. Easy to follow instructions are included with each delivery.



Entrance matting surface mounted ancillaries

Fronrunner Entry & Fronrunner Plus



14mm x 60mm x 10.1m
(9/16" x 2 1/2" x 33')

60mm PVC edging strip

Supplied in rolls of 10.1m (33') length with cold welding paste.

Colours: Black, Dark Grey



14mm x 100mm x 10.1m
(9/16" x 3 3/4" x 33')

100mm PVC edging strip

Supplied in rolls of 10.1m (33') length with cold welding paste.

Colours: Black, Dark Grey, Yellow

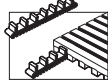


15mm x 45mm x 2m
(5/8" x 1 13/16" x 6'6")

45mm Aluminium edging strip

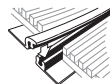
Supplied in sections of 2m (6'6") length with fixing screws and plugs.

Colours: Anodised Aluminium, Powder Coated Yellow



Connector clips - side to side

For joining sections of matting side to side. Supplied in packs of 10.



14mm x 2.5m
(9/16" x 8'2")

Snap Track

2 part snap track can be welded to join rolls end to end or side to side for large area covering.

Supplied with cold welding paste.

Colour: Dark Grey

Fronrunner Entry Low Profile

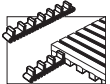


10mm x 50mm x 10.1m
(3/8" x 2" x 33')

50mm PVC edging strip

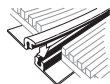
Supplied in rolls of 10.1m (33') length with cold welding paste.

Colours: Black, Dark Grey



Connector clips - side to side

For joining sections of matting side to side. Supplied in packs of 10.



10.5mm x 1.8m
(13/32" x 5'11")

Snap Track - Low Profile

2 part low profile snap track can be welded to join rolls end to end or side to side for large area covering.

Supplied with cold welding paste.

Fronrunner Plus Low Profile

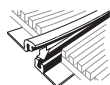


10mm x 50mm x 10.1m
(3/8" x 2" x 33')

50mm PVC edging strip

Supplied in rolls of 10.1m (33') length with cold welding paste.

Colours: Black, Dark Grey



10.5mm x 1.8m
(13/32" x 5'11")

Snap Track - Low Profile

2 part low profile snap track can be welded to join rolls end to end or side to side for large area covering.

Supplied with cold welding paste.

Colour: Dark Grey

Fronrunner Brush & Fronrunner Brush Wide



14mm x 60mm x 10.1m
(9/16" x 2 1/2" x 33')

60mm PVC edging strip

Supplied in rolls of 10.1m (33') length with cold welding paste.

Colours: Black, Dark Grey



14mm x 100mm x 10.1m
(9/16" x 3 3/4" x 33')

100mm PVC edging strip

Supplied in rolls of 10.1m (33') length with cold welding paste.

Colours: Black, Dark Grey, Yellow



15mm x 45mm x 2m
(5/8" x 1 13/16" x 6'6")

45mm Aluminium edging strip

Supplied in sections of 2m (6'6") length with fixing screws and plugs.

Colours: Anodised Aluminium, Powder Coated Yellow



14mm x 2.5m
(9/16" x 8'2")

Snap Track

2 part snap track can be welded to join rolls end to end or side to side for large area covering.

Supplied with welding paste.

Colour: Dark Grey

Fronrunner XT



14mm x 60mm x 10.1m
(9/16" x 2 1/2" x 33')

60mm PVC edging strip

Supplied in rolls of 10.1m (33') length with cold welding paste.

Colours: Black, Dark Grey

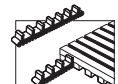


15mm x 45mm x 2m
(5/8" x 1 13/16" x 6'6")

45mm Aluminium edging strip

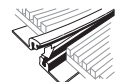
Supplied in sections of 2m (6'6") length with fixing screws and plugs.

Colours: Anodised Aluminium, Powder Coated Yellow



Connector clips - side to side

For joining sections of matting side to side. Supplied in packs of 10.



14mm x 2.5m
(9/16" x 8'2")

Snap Track

2 part snap track can be welded to join rolls end to end or side to side for large area covering.

Supplied with cold welding paste.

Colour: Dark Grey

Fronrunner SB & Fronrunner SB+



6.5mm x 30mm x 60m
(1/4" x 1" x 197')

30mm PVC edging strip

Supplied in rolls of 60m (197') length with cold welding paste.

Colours: Black, Dark Grey



3.5mm x 3.6m
(1/8" x 11'9")

T Joining Strip

1 part strip can be welded to join rolls end to end or side to side for larger area covering.

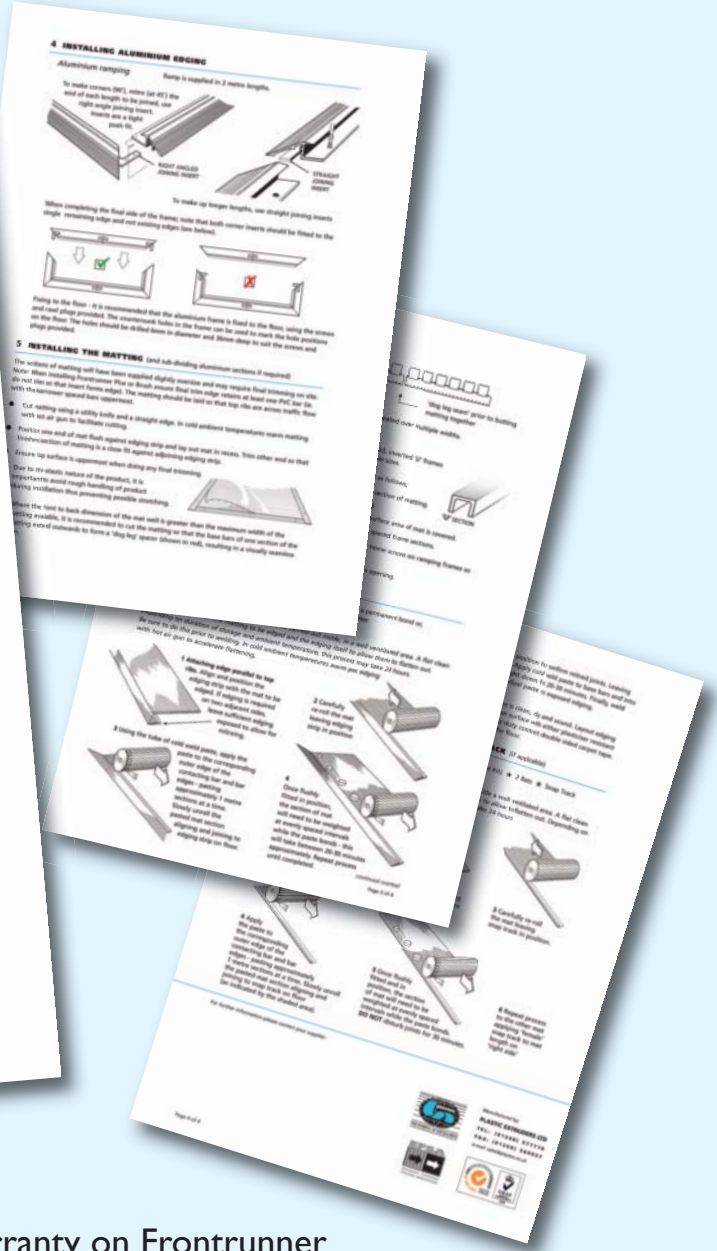
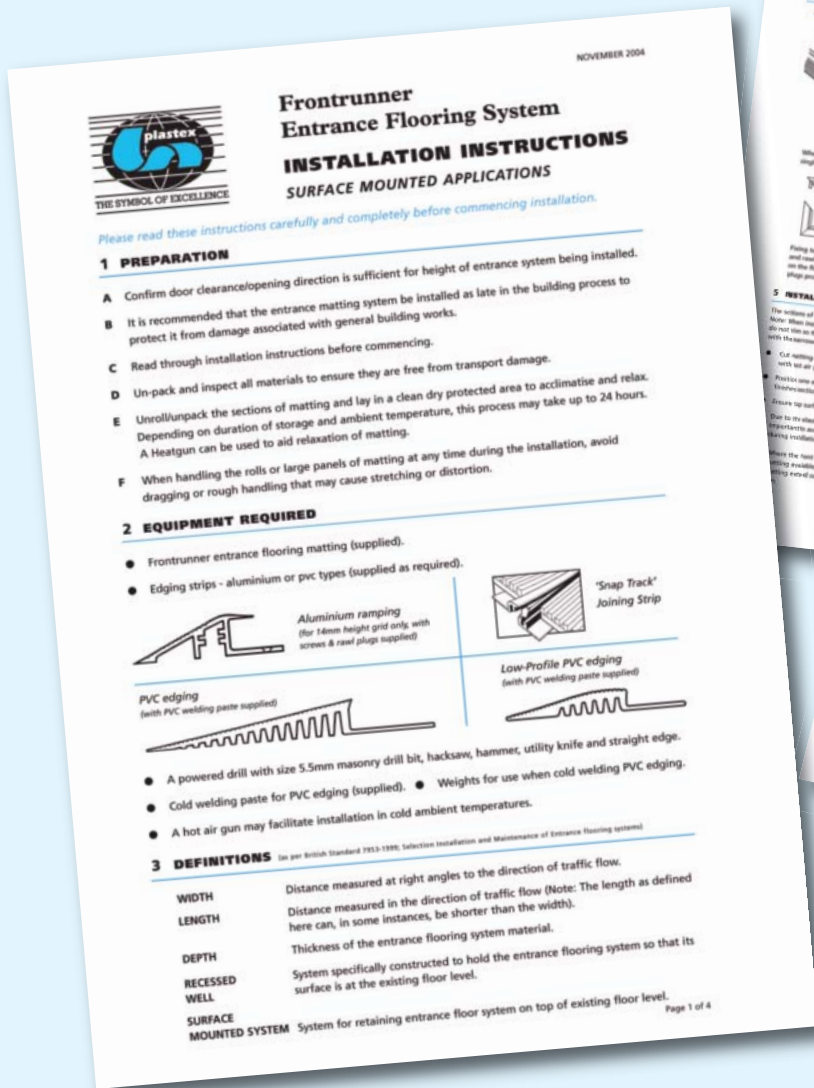
Colour: Black

Surface Mounted Installation Instructions

Easy to follow instructions

Fitting PVC or aluminium ramped ancillaries and connector clips is quick and simple.

Instructions are included with each delivery.



Cleaning Guidance

Fronrunner is also very easy to clean within normal cleaning schedules and doesn't require any specialised cleaning products.

Full cleaning instructions come with Fronrunner when delivered or are available at www.plastexmatting.com/fronrunner-cleaning.html

Warranty on Fronrunner Entrance Flooring Systems

Fronrunner entrance flooring systems are very durable and many of the installations shown in this brochure have been in place for over ten years and are still performing with admirable style and service. This applies to large retail centres with all the heavy footfall traffic, where we confidently offer a 2-4 year warranty on all of the Fronrunner range.

Full warranty statement: www.plastexmatting.com/warranty-policy.html



Multi-Purpose

FLOOR COVERINGS

◆ Introduction 63

◆ International Applications 64 - 65

SHEET FLOORING

◆ Flexi Dot 66

Flexi Dot Extra 66

Eco Dot 66

Eco Dot Extra 66

◆ Flexi Coin 67

Eco Coin 67

◆ Flexi Button 68

◆ Flexi Tred 69

◆ Flexi Line 70

◆ Flexi Ridge 71

TILES

◆ Plastex Chex 72

◆ Plastex Lok 73

◆ Plastex Grid 74

◆ Ancillaries 75



www.plastexmatting.com

Why multi-purpose floor coverings?

When you need form and function for larger floor areas the Plastex Multi-Purpose range provides comfort, safety, style and cleanliness as well as protection for floor, bench and components.

2 formats - large one piece covering by standard rolls up to 1.5m (5') x 25m (82') or interlocking tiles.

How to choose your multi-purpose mat

Colour & Design

Often in larger areas colour is an important factor. After all floors usually make up the largest area of single colour in any interior design. Plastex has an extensive range of colours and patterns to choose from.

Surface pattern is important for several reasons...

Dot Pattern

As a rule of thumb the higher the dot the greater the grip, the smaller the dot the easier it is to clean and for small wheels to cross. Also design perspective comes into play – big dots make rooms look smaller; small dots make rooms look bigger. We produce mats with three sizes from big to small - coin, button and dot.

DOT PATTERN						
PRODUCT	PAGE	DOT SIZE	COLOURS	THICKNESS	SPILLAGE	USAGE
Flexi Dot	6		2			Contemporary small dot pattern.
Flexi Dot Extra	6		2			Contemporary small dot pattern for heavier traffic areas.
Eco Dot	6		2			Contemporary small dot eco-friendly product.
Eco Dot Extra	6		2			Ecological pattern for heavier traffic areas.
Flexi Coin	7		1			Large stud vinyl alternative.
Eco Coin	7		2			Large stud vinyl eco-friendly product
Flexi Button	8		2			Heavy duty deep stud flooring.

Ridge Pattern

Striped surfaces provide a bit of extra comfort and can deal better with spillage. We have grooved stripe products for extra grip.

RIDGE PATTERN						
PRODUCT	PAGE	PATTERN SIZE	COLOURS	THICKNESS	SPILLAGE	USAGE
Flexi Tred	9		4			Heavy duty ribbed matting suitable for use where electrical safety is required.
Flexi Line	10		3			Fine ribbed matting designed for areas alongside or on top of benches.
Flexi Ridge	11		2			Hard wearing ribbed matting with high component and noise protection.

Open Grid Pattern

For areas with the likelihood of heavy spillage our Plastex Grid and Plastex Lok products provide comfort and support for both chemical and non-chemical environments.

GRID PATTERN						
PRODUCT	PAGE	GRID	COLOURS	THICKNESS	SPILLAGE	USAGE
Plastex Grid	14	Open	5	25mm (1")		Heavy duty rigid grid tiling for where large volumes of liquid require efficient dispersal.
Plastex Grid	14	Closed	2	25mm (1")		Heavy duty rigid grid solid surface tiling for coverage of large areas.
Plastex Lok	13	Open	1	16mm (5/8")		Heavy duty open grid 100% recycled PVC tiles.
Plastex Chex	12	Closed	1	14mm (4/9")		Heavy duty solid surface 100% recycled PVC tiles.

Durability

The thicker the mat the longer it wears - so take the amount of traffic into account. Of course the thicker mats also provide more protection for floors, benches and components.

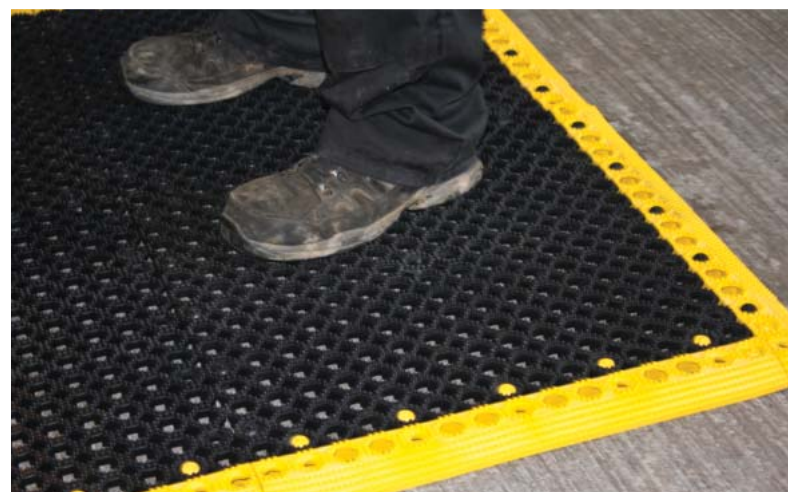
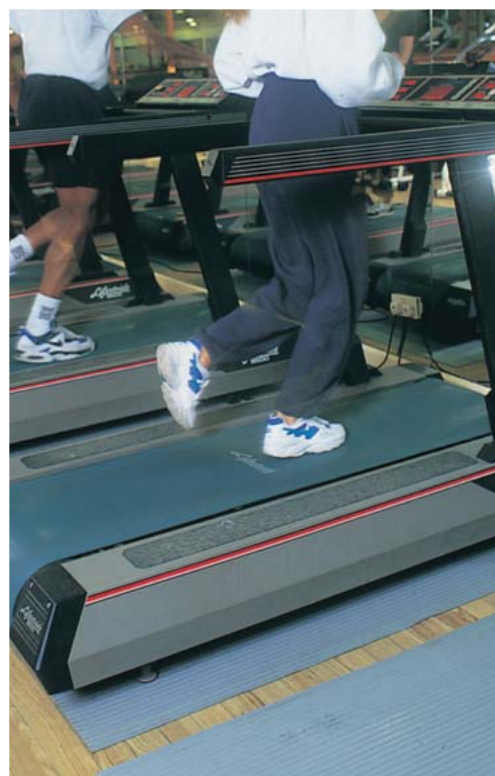
Environment

All the above products are 100% recyclable and made from 100% DINP (REACH compliant) PVC, including recycled versions ("Eco" products, Plastex Lok and Plastex Chex).

DIVERSITY, FUNCTION



A N D P R O T E C T I O N



A L L R E A S O N S

FLEXI DOT

Contemporary small dot pattern

A light duty, attractive vinyl in a choice of colours with a dot pattern as a main feature.

More than just attractive, but also highly functional, Flexi Dot performs well and the roll format enables large area coverage with a minimum of seams/joints.



BENEFITS

- Good slip resistance
- Chemical, oil and acid resistant
- Easy to cut on site, contours to uneven surfaces
- Quick to install
- Environmentally-friendly
- Fire resistant

FEATURES

- Dot pattern surface
- Vinyl sheets in roll format
- Made from flexible PVC
- Supplied in convenient roll formats
- 'Eco' version manufactured from reprocessed factory waste
- EN 13501 - 1 : 2007- Bfl - S1

Eco Dot

Providing an eco-friendly and economical alternative, Eco Dot is manufactured to the same specification but using recycled factory materials only.

Flexi Dot Extra & Eco Dot Extra

Thicker 2.5mm (3/32") versions for heavier traffic areas.

STANDARD COLOURS

FLEXI DOT



RED BLUE

ECO DOT



DARK GREY BLACK

FLEXI DOT EXTRA



RED BLUE

ECO DOT EXTRA



DARK GREY BLACK

STANDARD SIZES

PRODUCT	HEIGHT	STANDARD ROLL OPTION
Flexi Dot	1.6mm (1/16")	25 x 0.98m (82' x 3'2")
Eco Dot	1.6mm (1/16")	25 x 0.98m (82' x 3'2")

PRODUCT	HEIGHT	STANDARD ROLL OPTION
Flexi Dot Extra	2.5mm (3/32")	20 x 0.98m (65' 7" x 3'2")
Eco Dot Extra	2.5mm (3/32")	20 x 0.98m (65' 7" x 3'2")

FLEXI COIN

The large stud vinyl alternative

Attractive large stud vinyl floor covering also available in 'eco' version.

Large areas can be covered economically using just one piece of material in 98cm (3'2") or 150cm (5') widths. This multi-purpose product is a high quality alternative to conventional floorings in many light duty applications.



BENEFITS

- Good slip resistance
- Chemical, oil and acid resistant
- Easy to cut on site, contours to uneven surfaces
- Quick to install
- Environmentally-friendly
- Fire resistant

FEATURES

- Large stud design
- Vinyl sheets in roll format
- Made from flexible PVC
- Supplied in convenient roll formats
- 'Eco' version manufactured from reprocessed factory waste
- EN 13501 - 1 : 2007- Bfl - S1

Eco Coin

The eco-friendly and more economical version of Flexi Coin manufactured from 100% recyclable factory waste.

STANDARD COLOURS

FLEXI COIN

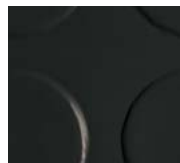


BLUE

ECO COIN



DARK GREY



BLACK

STANDARD SIZES

PRODUCT	HEIGHT	STANDARD ROLL OPTIONS	
Flexi Coin	1.6mm (1/16")	25 x 0.98m (82' x 3'2")	25 x 1.5m (82' x 5')
Eco Coin	1.6mm (1/16")	25 x 0.98m (82' x 3'2")	25 x 1.5m (82' x 5')

FLEXI BUTTON

Heavy duty deep stud floor covering

A multi-purpose, heavy duty sheet vinyl for commercial and medium duty industrial applications.

The distinctive deep stud design is not only an attractive feature but also a practical one. Flexi Button is easy to clean, slip resistant, chemical, oil and acid resistant and formulated to cope with light spillages.



BENEFITS

- Good slip resistance and hardwearing
- Chemical, oil and acid resistant
- Easy to cut on site, contours to uneven surfaces
- Quick to install
- Fire resistant

FEATURES

- Deep stud design
- Vinyl sheets in roll format
- Made from flexible PVC
- Supplied in convenient roll formats
- EN 13501 - 1 : 2007- Bfl - S1

STANDARD COLOURS



BLUE

DARK GREY

BLACK

STANDARD SIZES

PRODUCT	HEIGHT	STANDARD ROLL OPTION
Flexi Button	3.3mm (1/8")	20 x 0.98m (65' 7" x 3' 2")



FLEXI TRED

Heavy duty ribbed matting

Providing electrical resistance and enhanced safety for demanding applications.

A durable, chemical resistant sheet vinyl with a textured broad rib surface for enhanced safety. Flexi Tred insulates from the dangers of electric shock and meets DIN/EN 60243-1 with a breakdown voltage of 27kV.



BENEFITS

- Good slip and wear resistance
- Insulates from electric shock
- Chemical, oil and acid resistant
- Easy to cut on site, contours to uneven surfaces
- Quick to install
- Fire resistant

FEATURES

- Textured broad rib surface
- Breakdown voltage of 27kV
- Vinyl sheets in roll format
- Made from flexible PVC
- Supplied in convenient roll formats
- EN 13501 - 1 : 2007- Cl1 - S1

STANDARD COLOURS



BLUE



BROWN



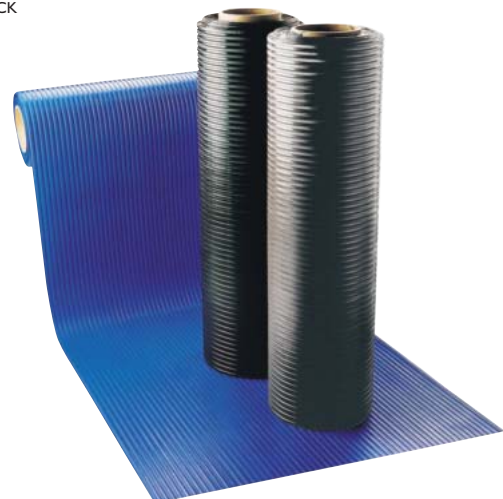
LIGHT GREY



BLACK

STANDARD SIZES

PRODUCT	HEIGHT	STANDARD ROLL OPTION
Flexi Tred	4.0 (5/32")	10 x 1 (33' x 3'3")



Fine ribbed matting

Fluted surface resists oils, chemicals and acids.

The practical alternative to conventional rubber runners, Flexi Line is a fine ribbed vinyl matting designed for areas alongside or on top of benches. Flexi Line has a slip resistant fluted surface and dense composition to reduce the impact of noise and/or vibration.



BENEFITS

- Good slip resistance
- Chemical, oil and acid resistant
- Easy to cut on site, contours to uneven surfaces
- Quick to install
- Fire resistant

FEATURES

- Fine ribbed surface
- Vinyl sheets in roll format
- Made from flexible PVC
- Supplied in convenient roll formats
- EN 13501 - 1 : 2007- Bfl - S1

STANDARD COLOURS



RED



LIGHT GREY



BLACK

STANDARD SIZES

PRODUCT	HEIGHT	STANDARD ROLL OPTION
Flexi Line	2mm (5/64")	25 x 1m (82' x 3'3")



FLEXI RIDGE

Hard wearing ribbed matting

For component protection and dispersion of light spillages.

Scuff resistant flooring or bench top matting with high component and noise protection featuring easy to clean ridges to enhance resilience and disperse light spillages, in a one piece homogenous roll.



BENEFITS

- Good slip and wear resistance
- Chemical, oil and acid resistant
- Easy to cut on site, contours to uneven surfaces
- Quick to install
- Fire resistant

FEATURES

- Ribbed surface
- Vinyl sheets in roll format
- Made from flexible PVC
- Supplied in convenient roll formats
- EN 13501 - 1 : 2007- Bfl - S1

STANDARD COLOURS



GREEN



DARK GREY



STANDARD SIZES

PRODUCT	HEIGHT	STANDARD ROLL OPTION
Flexi Ridge	2.8mm (7/16")	20 x 1m (65'7" x 3'3")

PLASTEX CHEX

100% recycled heavy duty checker plate PVC tiles

Plastex Chex is a hard wearing tiling system, delivering long life and value for money.

It can be used as a temporary or permanent flooring solution for coverage of large areas in the workplace, such as work stations, finishing/assembly areas, laboratories, localised workcells and machine shops.

Plastex Chex solid surface absorbs shock and noise as well as being resistant to chemicals and extreme temperatures.



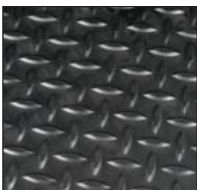
BENEFITS

- Slip resistant and hard wearing
- Insulating and chemical, oil and acid resistant
- Quick to install
- Environmentally-friendly
- REACH compliant
- Finished areas

FEATURES

- Checker plate surface
- Non-porous PVC (impermeable to fluids)
- Interlocking jigsaw tiles
- Made from 100% recycled material
- Made with certified recycled material
- PVC ramped edging

STANDARD COLOUR



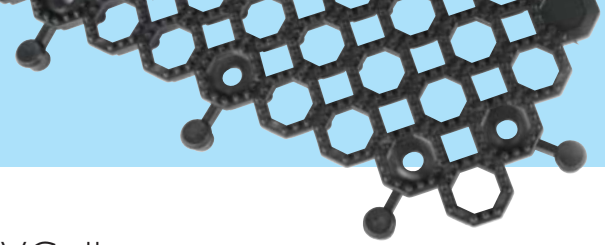
BLACK

STANDARD SIZES

PRODUCT	HEIGHT	STANDARD TILE SIZE
Plastex Chex	14mm (9/16")	0.5 x 0.5m (1'8" x 1'8")

Available in packs of 16 tiles





100% recycled heavy duty open grid PVC tiles

Plastex Lok is a hard wearing open grid tiling system, delivering long life and value for money.

It can be used as a temporary or permanent flooring solution for coverage of large areas in the workplace with the likelihood of heavy spillage, such as work stations, finishing/assembly areas, laboratories, localised work cells and machine shops.

Plastex Lok's pimpled open grid surface guarantees excellent slip resistance (DIN 51130 R12) and, at the same time, facilitates drainage (DIN 51130 V10) and soil removal.



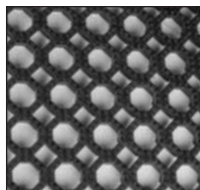
BENEFITS

- Certified slip resistance **DIN 51130:R12**
- Excellent drainage **DIN 51130:V10**
- Chemical, oil and acid resistant
- Quick to install
- Environmentally-friendly
- Easy to cut on site, contours to uneven surfaces
- Finished areas

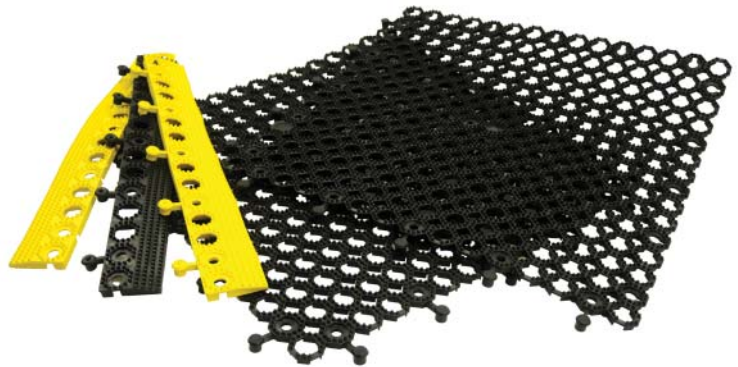
FEATURES

- Pimpled surface
- Raised construction
- Non-porous PVC (impermeable to fluids)
- Interlocking tiles
- Made from 100% recycled material
- Made from flexible PVC
- PVC ramped edging

STANDARD COLOUR



BLACK



STANDARD SIZES

PRODUCT	HEIGHT	STANDARD TILE SIZE
Plastex Lok	16mm (5/8")	0.5 x 0.5m (1'8" x 1'8")

Available in packs of 16 tiles

PLASTEX GRID

Heavy duty rigid grid tiling

A versatile flooring solution in multiple industrial applications.

Rigid polyethylene grid tiles with a secure, quick and easy 'lock-fit' connection, Plastex Grid provides a raised floor surface standing 25mm (1") above ground.



BENEFITS

- Open grid or solid grid design
- Good slip resistance
- Resistant to detergents, industrial chemicals and acids
- 25mm (1") high surface
- Effective coverage of large areas

FEATURES

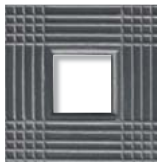
- Open grid for removal of large volumes of liquid
- Textured surface
- Made from rigid polyethylene
- Withstands weights of up to 50T/m²
- Secure 'lock fit' connection

STANDARD COLOURS

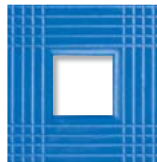
PLASTEX GRID OPEN



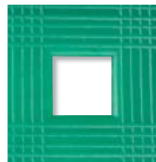
RED



DARK GREY



BLUE

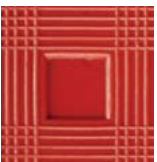


GREEN



WHITE

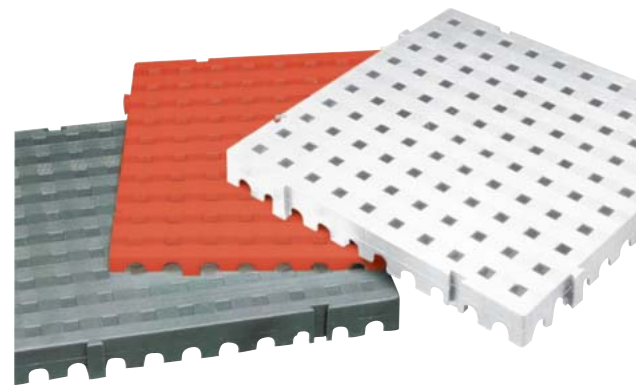
PLASTEX GRID CLOSED



RED

STANDARD SIZES

PRODUCT	HEIGHT	STANDARD TILE SIZE	WEIGHT
Plastex Grid Open	25mm (1")	50 x 50cm (1' 8" x 1' 8")	3.6 kg/m ² (0.66 lbs/sft)
Plastex Grid Closed	25mm (1")	50 x 50cm (1' 8" x 1' 8")	4.4 kg/m ² (0.80 lbs/sft)



Matting and tiling floor covering applications & ancillaries

One Piece Covering

If you have a large floor area and are looking for a one-piece covering or runner, look no further than our multi-purpose flooring range.

We can manufacture a standard width roll to any length you specify.

The only thing to bear in mind, when it comes to fitting for larger areas, is that weight may be an issue; for example a 30m (100') roll of FlexiTred weighs about 125kilos (275lbs).



Loose Lay or fixed

Plastex multi-purpose flooring also offers you the versatility of choosing between loose lay or permanent fixing. Loose lay is the perfect instant solution to dirty or unfinished floors.

For the longer-term, our range of colours and surface patterns allows you to include our multi-purpose matting as fixed design feature.

You'll find the matting can be easily cut and shaped on site, and once stuck down, is an elegant and long lasting design solution.



Plastex Grid



25mm x 66mm x 2m
(1" x 2 3/4" x 6'6")

66mm Aluminium strip

Supplied in sections of 2m (6'6") length with fixing screws and plugs

Colour: Anodised Aluminium

Plastex Chex



12mm x 50mm x 500mm
(1/2" x 2" x 1'8")

50mm PVC edging strip

Supplied in 50cm (1'8") lengths.

Colours: Black, Yellow

Plastex Lok



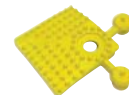
12mm x 50mm x 500mm
(1/2" x 2" x 1'8")

50mm PVC edging strip

Male and female strips available.

Supplied in 50cm lengths (1'8").

Colours: Black, Yellow



12mm x 50mm x 50mm
(1/2" x 2" x 2")

50mm PVC edge corner

Colours: Black, Yellow



Connector clips - end to end

For joining two ends of the edging together. One lug is supplied for every two pieces of edging in the relevant colour.

Colours: Black, Yellow

Specialist

APPLICATION MATTING

Why specialist matting?

With over 50 years of experience, customers have often requested our knowledge to research and develop matting products to meet specific needs. This section showcases a few of the most common 'special' matting solutions we have developed to meet various market and application requirements.

Wave Simulator Matting - p77



PillogriD - large space hollow tube for maximum cushioning and drainage.

Animal Cage Matting - p81



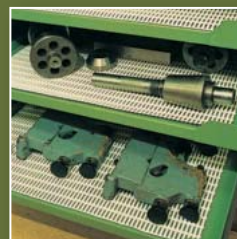
HVD - smooth yet hardwearing with good cushioning & drainage properties. Ideal in veterinary applications.

Roof Walkway Matting - p78-79



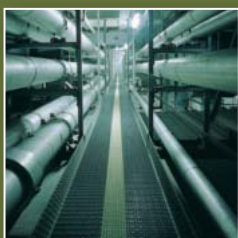
Crossgrip PVC and Crossgrip TPO - slip resistant and self draining high level mats for safe access in all weathers and roof membrane protection.

Cushion Matting - p82



Pillomat - lightweight, hygienic cushioned matting suitable for bench tops, working surfaces and shelving. Impact, chemical, oil and acid resistant.

Escape Route Matting - p80



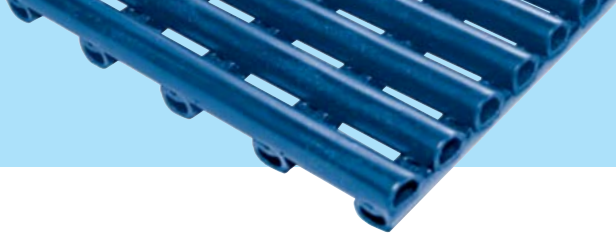
Heronair Photoluminescent - escape route matting with a light emitting strip to mark escape routes if lighting fails.

ESD Matting - p83



Zed Land ESD - superior quality, patented foam matting for standing areas in static sensitive environments.

P I L L O G R I D



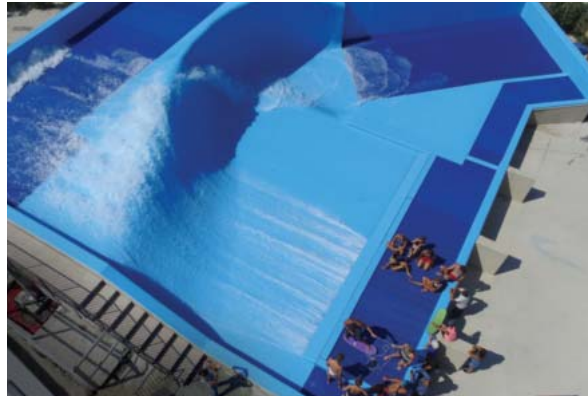
Cushioning matting for wave simulators

A large open grid and soft vinyl with hollow profile combining phenomenal drainage with a soft landing.

Designed to be placed over metal grates at the back and front of surfing machines, PillogriD matting was specifically developed to provide excellent drainage and superior cushioning for aquatic safety.

Large roll format further adds to safety by removing the need for joints in action areas.

This matting can be supplied in factory welded panels for quick and easy installation.



BENEFITS

- Soft landing
- High volume drainage
- Highly resistant
- Easy to cut on site, contours to uneven surfaces
- Quick to install
- UV resistant
- Hard wearing
- Hygienic

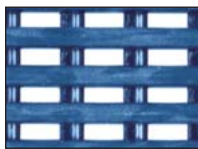
FEATURES

- Hollow tube construction
- Large open grid format
- "D" profile for maximum weld strength
- Made from flexible PVC
- Supplied in rolls or fabricated panels
- Can be used indoor or outdoor
- All welded construction
- All flexible PVC construction

STANDARD COLOURS



BLACK



BLUE



STANDARD SIZES

PRODUCT	HEIGHT	STANDARD ROLL OPTIONS*			
PillogriD	20mm (3/4")	5 x 0.6m (16'6" x 2)	5 x 0.91m (16'6" x 3)	10 x 0.6m (33' x 2)	10 x 0.91m (33' x 3)

*Contact us for bespoke dimensions.

CROSSGRIP PVC

Roof walkway matting in PVC

A two layer roof walkway matting that protects the roof membrane and provides safe access for general maintenance works. Compatible with various roof surfaces.

Made from non-porous PVC with cross directional top ribs and a 'diamond cut' surface for a firm underfoot grip, Crossgrip PVC carries a high R10 slip resistant rating under DIN 51130.

Impermeable in all weathers, Crossgrip is highly specialised matting system for flat roofs, gantries and high level walkways. When laid flat, it will remain stable in winds up to 60 mph-96 km/h*.



BENEFITS

Certified slip resistance **DIN 51130: R10** **ASTM 1677: 1.0/0.9**

Excellent drainage **DIN 51130: V10**

Roof membrane protection

Compatible with PVC roof membranes

Quick to install

Contours to the roof structure

Loose lay, no fixing required

Long life

FEATURES

Diamond cut pattern

Two layer construction

Durable one piece construction

PVC construction

Supplied in 10m rolls

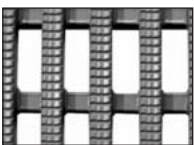
Made from flexible PVC

Stable in winds up to 60mph (96km/h)*

UV resistant

* Tests at the University of Hertfordshire, School of Aerospace, Automotive & Design Engineering showed Crossgrip PVC when laid flat on a stable platform remained in position for wind speeds of 94mph (150km/h).

STANDARD COLOURS



LIGHT GREY



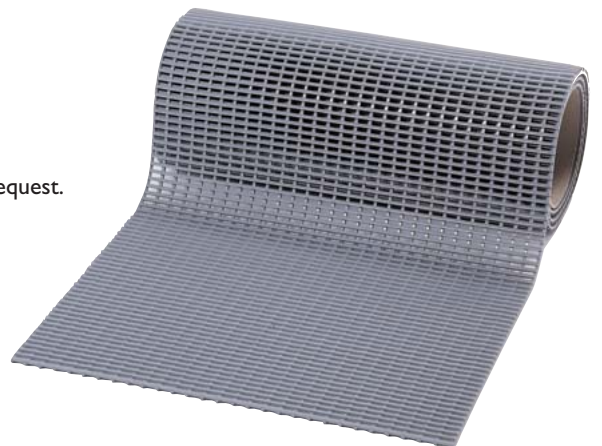
BLACK

Other colours available on request.

STANDARD SIZES

PRODUCT	HEIGHT	STANDARD ROLL OPTIONS**		
Crossgrip PVC	14mm (9/16")	10 x 0.6m (33' x 2')	10 x 0.91m (33' x 3')	10 x 1.22m (33' x 4')

**Contact us for bespoke dimensions.



CROSSGRIP TPO

Roof walkway matting in TPO

A roof walkway matting compatible with TPO and EPDM roofs.

Crossgrip TPO gives continuous all weather protection to roof membranes from dropped tools, heavy foot traffic and maintenance equipment.

Designed for use on flat roofs, Crossgrip TPO's 12mm (1/2") one piece welded open grid design offers permanent slip resistance, even in areas where water may pool.



BENEFITS

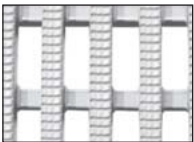
- Certified slip resistance **DIN 51130: R9**
- Excellent drainage **DIN 51130: V10**
- Fire resistant
- Roof membrane protection
- Compatible with TPO and EPDM roof membranes
- Quick to install
- Contours to the roof structure
- Loose lay, no fixing required
- Long life

FEATURES

- Embossed surface
- Two layer construction
- EN 13501-1 : 2007- Dfl-S1**
- Durable welded construction
- TPO construction
- Supplied in 10m rolls
- Made from flexible TPO
- Stable in winds up to 55mph (89km/h)*
- UV resistant

* Tests at the University of Hertfordshire, School of Aerospace, Automotive & Design Engineering showed Crossgrip TPO when laid flat on a stable platform remained in position for wind speeds of 88mph (142km/h).

STANDARD COLOUR



WHITE

STANDARD SIZES

PRODUCT	HEIGHT	STANDARD ROLL OPTIONS**
Crossgrip TPO	12mm (1/2")	10 x 0.75m (33' x 2'6")

**Contact us for bespoke dimensions.



HERONAIR PHOTOLUMINESCENT

Escape route matting with glow in the dark properties

Photoluminescent centre strip marks escape routes after ambient light failure.

Manufactured to the same specification as Heronair and incorporating a 10cm photoluminescent strip, this light emitting band marks escape routes if lighting fails.

Heronair Photoluminescent is tested to DIN 67510 Part 1 after glow properties (33.9/4.4-588/w-k).

Especially suitable for open grid and metal checker plate surfaces.



BENEFITS

- Certified slip resistance **DIN 51130: R11 - ASTM 1677: 0.6/0.6**
- Excellent drainage **DIN 51130: V10**
- Light to carry
- Indicates escape route after ambient light failure
- Loose lay, contours to uneven surfaces
- Quick to install

FEATURES

- Etched pattern
- Two layer construction
- Tubular construction
- Photoluminescent light emitting band
- Made from flexible PVC
- Supplied in 10m rolls

STANDARD COLOUR



BLACK WITH PHOTOLUMINESCENT CENTRE STRIP

Other colours available on request.



STANDARD SIZES

PRODUCT	HEIGHT	STANDARD ROLL OPTIONS*	
Heronair	10mm (3/8")	10 x 0.6m (33' x 2')	10 x 0.9m (33' x 3')

*Contact us for bespoke dimensions.



Animal cage matting

A top performer where comfort and cleanliness count.

HVD is a simple to cut and fit vinyl matting with a particularly smooth upper surface, which provides an extremely high level of cushioning and drainage, whilst also being hygienic, comfortable and easy to clean.

As a result of this special combination of benefits, HVD is ideal for lining kennel cages and is widely used in veterinary clinics, kennels, research facilities and zoos.



BENEFITS

- Warm and comfortable
- High drainage
- Easy to clean
- Easy to cut on site, contours to uneven surfaces
- Quick to install

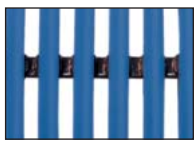
FEATURES

- Extra smooth surface
- Two layer construction
- Non-toxic and inert
- Made from flexible PVC
- Supplied in 10m rolls

STANDARD COLOURS



BLACK



BLUE

Other colours available on request.



STANDARD SIZES

PRODUCT	HEIGHT	STANDARD ROLL OPTIONS*		
HVD	13.5mm (17/32")	10 x 0.6m (33' x 2')	10 x 0.91m (33' x 3')	10 x 1.22m (33' x 4')

*Contact us for bespoke dimensions.

P I L L O M A T

Cushion matting

Designed for the covering of work and storage surfaces. A bonus wherever delicate components and tools are stored or handled.

Pillomat is an all-purpose cushioned matting of tubular construction with air-filled hollow sections providing a lightweight working surface matting solution, which is ideal for a wide variety of industries - from marine compartments to general manufacturing where it is widely used on bench tops.

It is also extremely effective as a lining for shelving and compartments.



BENEFITS

- Component protection
- Good drainage and fall through
- Hygienic and easy to clean
- Easy to cut on site, contours to uneven surfaces
- Quick to install
- Fire resistant

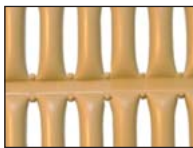
FEATURES

- Extra smooth surface and tubular construction
- Open grid
- Non-porous PVC (impermeable to fluids)
- Made from flexible PVC
- Supplied in 10m rolls
- Certified EN 13501 - 1 :2007- Bfl - S1

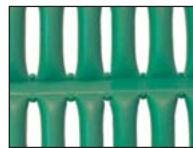
STANDARD COLOUR



MAHOGANY



BEIGE



GREEN



WHITE

STANDARD SIZES

PRODUCT	HEIGHT	STANDARD ROLL OPTIONS*	
Pillomat	8mm (5/16")	10 x 0.6m (33' x 2)	10 x 0.91m (33' x 3)

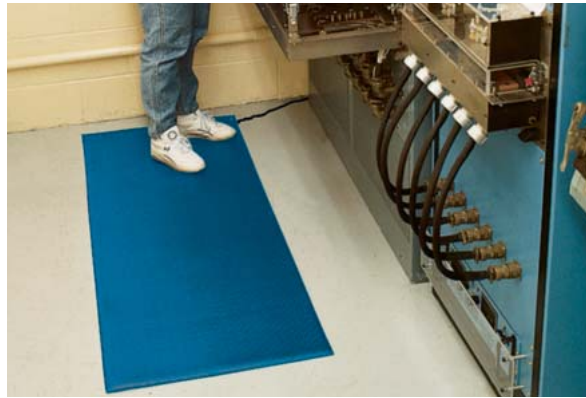
*Contact us for bespoke dimensions.



Patented foam construction with ESD properties

Made from high molecular density foam with 'bounce' properties up to 4 times as effective as standard foam matting for improved comfort and productivity.

Standing employees working on Zed Land will feel better and have improved productivity. Dropped components will also be protected from accidental damage. Zed Land will not deaden and shows minimal wear after 2000 taber abrator cycles in test conditions to ASTM D4060.



BENEFITS

- Certified wear resistance **ASTM 4060: $\leq 1.5\%$ ***
- Good slip resistance
- Excellent standing fatigue reducing properties will boost productivity
- Easy to cut to shape and quick to install
- Provides underfoot comfort in static sensitive environments

FEATURES

- Minimal wear standing foam which will not deaden
- Embossed pebble surface
- Patented vinyl foam construction with superior resilience
- Supplied in 18m rolls or standard modules
- Electrostatic dissipative (ESD) properties
Certified **ASTM D257: 10^9**

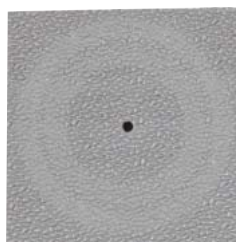
STANDARD COLOURS



BLUE

DARK GREY

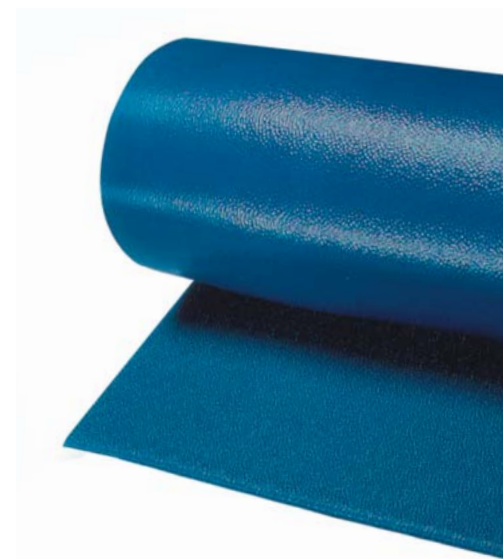
Other colours available on request.



*ASTM 4060 @ 2000 cycles

STANDARD SIZES

PRODUCT	HEIGHT	STANDARD ROLL OPTION	STANDARD MODULE OPTIONS		
Zed Land	9mm (3/8")	18 x 0.91m (60' x 3')	0.6 x 0.91m (2' x 3')	0.91 x 1.5m (3' x 5')	0.91 x 3m (3' x 10')



Ancillaries for specialist application matting

Crossgrip PVC



14mm x 60mm x 10.1m
(9/16" x 2 1/2" x 33')

60mm PVC edging strip

Supplied in rolls of 10.1m (33') length with cold welding paste.

Colours: Black, Dark Grey, Dark Brown, Holly Green, Oxford Blue, Yellow



14mm x 100mm x 10.1m
(9/16" x 3 3/4" x 33')

100mm PVC edging strip

Supplied in rolls of 10.1m (33') length with cold welding paste.

Colours: Black, Dark Grey, Yellow

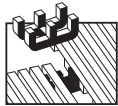


15mm x 45mm x 2m
(5/8" x 1 13/16" x 6'6")

45mm Aluminium edging strip

Supplied in sections of 2m (6'6") length with fixing screws and plugs.

Colours: Anodised Aluminium, Powder Coated Yellow



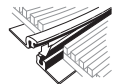
Connector clips - dual purpose

For joining sections of matting together side to side or end to end.
Supplied in packs of 10.



Connector clips - side to end

For joining sections of matting together side to end.
Supplied in packs of 10.



14mm x 2.5m
(9/16" x 8'2")

Snap Track

2 part snap track can be welded to join rolls end to end or side to side for large area covering.

Supplied with cold welding paste.

Colour: Dark Grey



Small floor hook

For securing sections of matting to floor.
Supplied in packs of 10 with screws and plugs.

HVD



14mm x 60mm x 10.1m
(9/16" x 2 1/2" x 33')

60mm PVC edging strip

Supplied in rolls of 10.1m (33') length with cold welding paste.

Colours: Black, Dark Grey, Dark Brown, Holly Green, Oxford Blue, Yellow



14mm x 100mm x 10.1m
(9/16" x 3 3/4" x 33')

100mm PVC edging strip

Supplied in rolls of 10.1m (33') length with cold welding paste.

Colours: Black, Dark Grey, Yellow

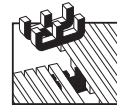


15mm x 45mm x 2m
(5/8" x 1 13/16" x 6'6")

45mm Aluminium edging strip

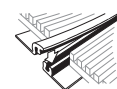
Supplied in sections of 2m (6'6") length with fixing screws and plugs.

Colours: Anodised Aluminium, Powder Coated Yellow



Connector clips - dual purpose

For joining sections of matting together side to side or end to end.
Supplied in packs of 10.



14mm x 2.5m
(9/16" x 8'2")

Snap Track

2 part snap track can be welded to join rolls end to end or side to side for large area covering.

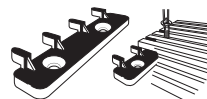
Supplied with cold welding paste.

Colour: Dark Grey



Small floor hook

For securing sections of matting to floor.
Supplied in packs of 10 with screws and plugs.



Large floor hook

For securing sections of matting to floor.
Supplied in packs of 10 with screws and plugs.

PillogriD



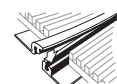
5m (16') on the shorter of 2 dimensions x physical weight of panel @ 7.1 kg/sq.m (1.45 lb/sq.ft)

Bespoke size panels

Plastex can supply simulator machine manufacturers with prefabricated robot welded panels. The maximum dimension of these panels is 5m (16') on the shorter of the length or width.

Consideration should also be given to handling and shipping of the overall weight of the fabricated panel. PillogriD weighs 7.1kg/sq.m (1.45lb/sq.ft).

Zed Land ESD



10.5mm x 1.8m
(13/32" x 5'11")

Snap Track - Low Profile

2 part low profile snap track can be welded to join rolls end to end or side to side for large area covering.

Supplied with cold welding paste.

Colour: Dark Grey



ESD Screw Fit Earthing Lead

Supplied in 4.5m (14'9") lengths

Extensive know-how

When you purchase from Plastex, you can do so with the confidence of knowing we have been designing and manufacturing matting for a diverse range of uses for over 55 years.

We design and build our proprietary equipment used to manufacture our quality products.



***‘tell us what you need
...and we’ll make it ’***

At Plastex, we realise not every flooring need can be solved by an off the peg solution. As EU & USA, manufacturers we are here to help, by designing and manufacturing a product to your custom specification.

Full Manufacturer Warranty - Another good reason to choose Plastex

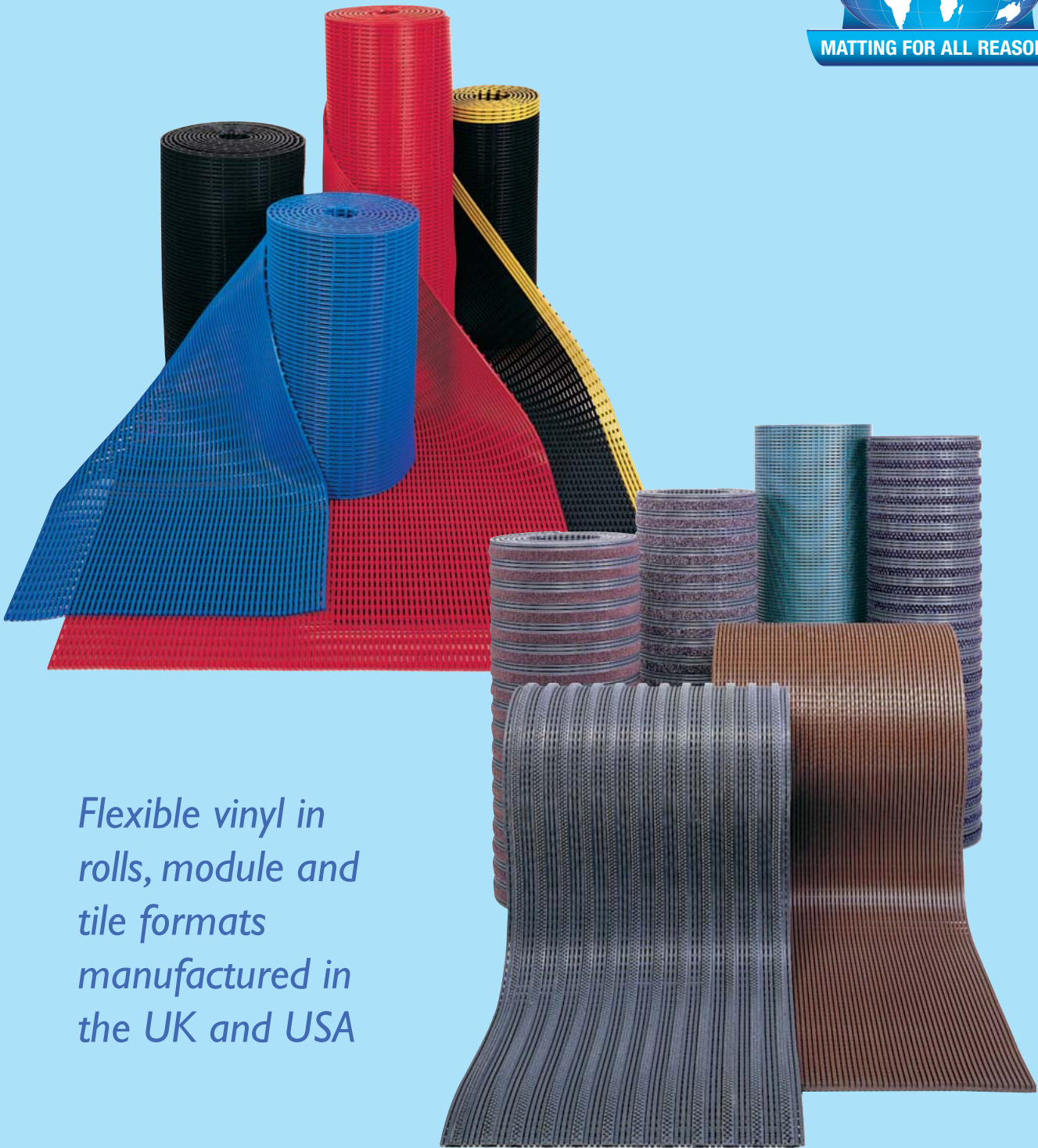
All Plastex flooring and matting products will give excellent and long service. In the unlikely event a Plastex product has a defect in workmanship, we offer a full refund or replacement warranty. The warranty periods vary depending on the product, please view full terms and details at www.plastexmatting.com/warranty-policy.html.

Product Index

Crossgrip PVC	78
Crossgrip TPO	79
Eco Coin	67
Eco Dot	66
Eco Dot Extra	66
Firmagrip	15
Flexi Button	68
Flexi Coin	67
Flexi Dot	66
Flexi Dot Extra	66
Flexigrid	14
Flexi Line	70
Flexi Ridge	71
Flexi Tred	69
Floorline Water Polo	39
Floorline - Workplace	12
Floorline - Wetside	38
Frontrunner Brush	48
Frontrunner Brush Wide	49
Frontrunner Entry	46
Frontrunner Modules	56
Frontrunner Plus	50
Frontrunner Plus Insert Colours	52
Frontrunner Plus Logos	51
Frontrunner SB	54
Frontrunner SB+	55
Frontrunner XT	47
Heronair - Anti-fatigue	30
Heronair - Workplace	11
Heronair Photoluminescent	80
Herongripa	13
Heronrib	36
Herontile	37
HVD	81
PillogriD - Wetside	40
PillogriD - Specialist	77
Pillomat	82
Plastex Grid	74
Plastex Chex - Specialist	72
Plastex Chex - Workplace	16
Plastex Lok - Specialist	73
Plastex Lok - Workplace	17
Sparksafe	29
Trackgrip	18
Tuff Spun	23
Tuff Spun Deck	25
Tuff Spun Wear	24
Vynagrip	8
Vynagrip Modules	10
Vynagrip Plus	9
Zed Chex	28
Zed Land	26
Zed Land ESD	83
Zed Tred	27



MATTING FOR ALL REASONS



*Flexible vinyl in
rolls, module and
tile formats
manufactured in
the UK and USA*



www.plastexmatting.com

Plastic Extruders Ltd.

Russell Gardens, Wickford,
Essex SS11 8DN, England

Tel: +44 (0) 1268 571116

Plastex Matting, Inc.

120 55th Street NE
Fort Payne, AL 35967 USA

Tel: +1 256 845 7725

