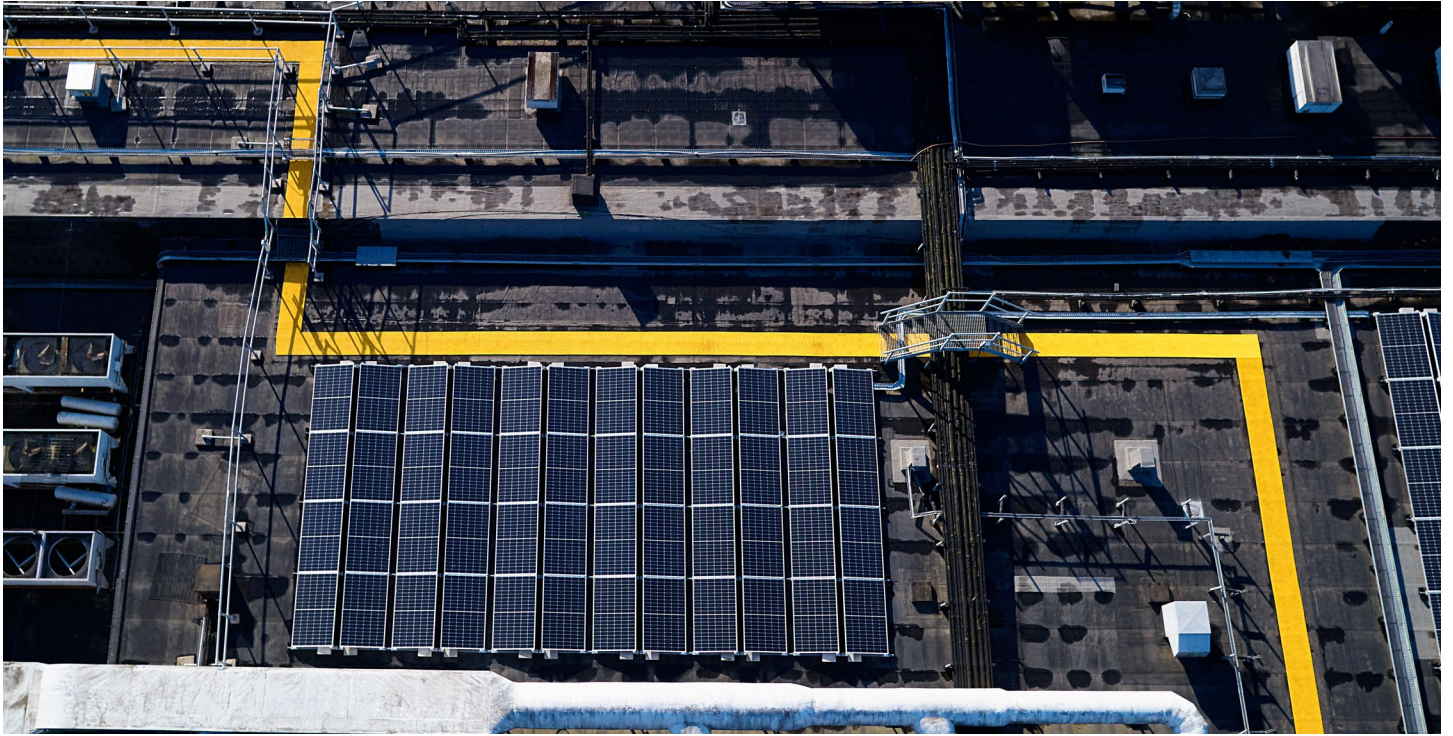


# Crossgrip® 20/20



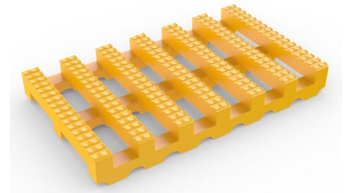
Specialised flat roof walkway system with a superior four-way drainage system and 10 year warranty.



Introducing Crossgrip 20/20, an external safety walkway system that combines all the best features of Crossgrip with an added four-way drainage system, enhanced slip resistance and an unbeatable 10-year warranty.

Crossgrip 20/20 has a redesigned base bar that boasts a superior four-way drainage system, plus a revamped top bar featuring a deeper cut to offer excellent slip resistance underfoot. The addition of improved UV weatherability and a 10-year warranty means Crossgrip 20/20 offers unparalleled performance, even in the most adverse conditions.

The durable, welded construction contours to the roof structure to help protect the roof surface from any potential damage, while the cross-directional top ribs ensure a firm grip underfoot.



## Features:



Deep-cut pattern



Two-layer construction and channelled underbars



Flexible, one-piece construction



Loose lay, no fixing required



Supplied in 10m (33') rolls



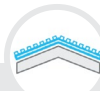
## Benefits:



Certified slip resistance (DIN 51130:R11)



Four-way drainage (DIN 51130:V10)



Contours to any surface



Stable in winds up to 60 mph/hr



Quick to install and move if needed



## Plastic Extruders Ltd.

Russell Gardens, Wickford  
Essex, SS11 8DN  
+44 (0) 1268 571 116

UK + USA manufactured matting products:  
[plastexmatting.com](http://plastexmatting.com)



# Crossgrip® 20/20

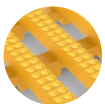
## Data sheet



### Standard sizes:

Product	Crossgrip 20/20
Height	14mm (9/16")
Standard roll options	10 x 0.6m (33' x 2')
	10 x 0.91m (33' x 3')
	10 x 1.22m (33' x 4')
Weight	5.8kg/m <sup>2</sup> (1.2 lb/sq.ft)

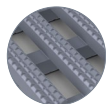
### Standard colours:



Yellow



White



Light grey



More colours  
available  
upon request

### Installation:

Crossgrip 20/20's one-piece construction means installation is simple:

- Loose lay, no fixing required
- Durable, one-piece construction
- Supplied in 10m rolls; simply cut to fit on site

### Cleaning:

Keeping Crossgrip 20/20 looking good is easy:

- Simply lift or roll to clean
- Easy to clean with a high pressure hose

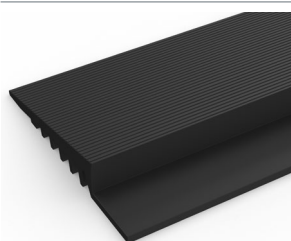
### Technical information:

<b>Acoustic</b>	Excellent sound absorption
<b>Chemical</b>	Resistant to most acids, alkalines and oils. You can read more about specific chemical resistances by downloading this <a href="#">information sheet</a> .
<b>Composition</b>	Flexible Polyvinyl Chloride (PVC)
<b>Drainage</b>	DIN 51130:V10
<b>Environment</b>	Crossgrip 20/20 is 100% recyclable. We don't use any substances included in the SVHC list under REACH in any of our matting products.
<b>Fire</b>	EN ISO 13501 - I : 2007 - Cf1 - S1
<b>Hygiene</b>	Made from non-porous PVC that's naturally resistant to bacteria growth.
<b>Reversion</b>	Thermoplastic shrinkage can result in size reductions up to 2%. This may be accelerated in hot environments. You can read more about the causes of shrinkage by <a href="#">downloading this information sheet</a> .
<b>Slip resistance</b>	DIN 51130:R11 ASTM E303 Dry/Wet with lines along-lines across 78-90 / 63-71
<b>Thermal</b>	Designed to function at temperatures from -23°C and up to +60°C. Slight size variation may occur at temperature extremes.
<b>UV light</b>	Resistant to PVC degradation
<b>Warranty</b>	Ten years. The product will remain functional and will not degrade in such a manner as to cause leaks in the PVC roof membrane. Visit our <a href="#">policies page</a> for more information about warranties.
<b>Wind resistance</b>	Crossgrip 20/20 remains stable in winds up to 60mph (96km/h). Tests at PRI Construction Materials Technologies LLC in Florida showed Crossgrip 20/20 when laid flat on a stable platform remained in position for wind speeds of 125mph (200 km/h).

### Ancillaries:

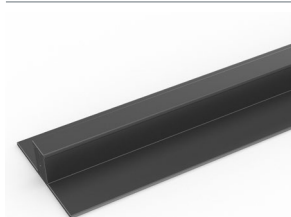
#### > Crossgrip 20/20

PVC edging (H: 14mm, W: 60mm)



Supplied in rolls of 10.1m (33') length. One tube of cold welding paste recommended for every 10m of edging. Comes in black, dark grey, dark brown, holly green, Oxford blue, yellow. Size: 14mm x 60mm x 10.1m (9/16" x 2 1/2" x 33')

PVC snap track (H: 14mm)



Two-part snap track that can be welded together to join rolls end-to-end or side-to-side to cover large areas. We recommend one tube of cold welding paste for every 10m of edging. Comes in black and dark grey. Size: 14mm x 2.5m (9/16" x 8'2")

Connector clips: dual purpose (H: 14mm)



For joining sections of matting together side-to-side or end-to-end. Supplied in packs of 10