

# Frontrunner Brush Wide

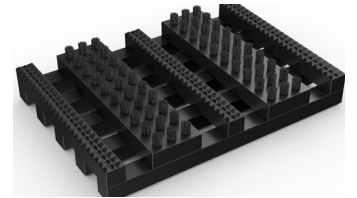


Extra wide external matting with brush inserts designed for trapping large debris.



Large debris is no match for Frontrunner Brush Wide, a hard-wearing entrance mat specifically designed to trap stones, snow, ice and shingle.

Heavy-duty brush strips with bristles scrape shoes clean, while the extra wide open grid traps and collects the large debris, preventing it from being walked inside. Frontrunner Brush Wide works either as a standalone entrance mat, or can be interchanged with another Frontrunner system, like Frontrunner Brush or Frontrunner XT, in the summer months.



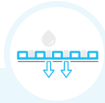
## Features:



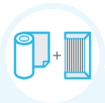
Diamond cut pattern



Two layer open-grid construction



Nylon brush inserts



Comes in 10m (33') rolls or modules



Made from flexible PVC



## Benefits:



Slip resistant, high soil removal



Excellent drainage



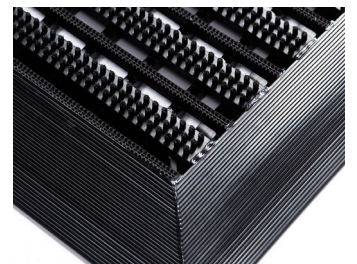
Scrapes shoes clean



Seamless installation



Easy to cut to fit on site, contours to uneven surfaces



## Plastic Extruders Ltd.

Russell Gardens, Wickford  
Essex, SS11 8DN  
+44 (0) 1268 571 116

UK + USA manufactured  
matting products:  
[plastexmatting.com](http://plastexmatting.com)



# Frontrunner Brush Wide



## Data sheet

### Standard sizes:

<b>Product</b>	<b>Frontrunner Brush Wide</b>
<b>Height</b>	14 - 19mm (9/16" - 3/4")
<b>Standard roll options</b>	10 x 0.6m (33' x 2')
	10 x 0.91m (33' x 3')
	5 x 1.2m (16'6" x 4')
<b>Standard module options</b>	0.8 x 1.2m (2'7" x 4')
	1 x 1.5m (3'3" x 4'11")
	1.1 x 2m (3'7" x 6'7")
<b>Weight</b>	7.8 kg/m <sup>2</sup> (1.6 lb/sq.ft)

Surface modules are supplied with factory fitted PVC ramped edging to four sides.

### Tolerances:

	<b>Height (+/- 0.5mm)</b>	<b>Length (0+0.3mm)</b>	<b>Width (0+2mm)</b>	
<b>Frontrunner Brush Wide</b>	14/19 mm	10 m	60 cm	91 cm
	14/19 mm	5 m	120 cm	

All dimensions are nominal

### PVC grid technical information:

<b>Acoustic</b>	Excellent sound absorption
<b>Brush inserts</b>	Construction: Aligned tufting with Nylon 6.6 Monofilaments bristle content. Height: 4.5mm Diameter: 0.3mm
<b>Chemical</b>	Resistant to most acids, alkalines and oils. You can read more about specific chemical resistances by <a href="#">downloading this information sheet</a>
<b>Composition</b>	Flexible Polyvinyl Chloride (PVC)
<b>Environment</b>	We don't use any substances included in the SVHC list under REACH in any of our matting products.
<b>Fire</b>	Nylon brush fibres: UL94 - V2
<b>Reversion</b>	Thermoplastic shrinkage can result in size reductions up to 2%. This may be accelerated in hot environments. You can read more about the causes of shrinkage by <a href="#">downloading this information sheet</a> .
<b>Thermal</b>	Designed to function at temperatures from -23°C and up to +60°C. Slight size variation may occur at temperature extremes.
<b>UV light</b>	Resistant to PVC degradation
<b>Warranty</b>	Two years. Visit our <a href="#">policies page</a> for more information about warranties

### Nylon brush inserts technical information:

<b>Construction</b>	Aligned tufting
<b>Bristle diameter</b>	0.3mm
<b>Insert thickness</b>	12mm
<b>Bristle content</b>	Nylon 6.6 monofilaments
<b>Bristle height</b>	4.5mm
<b>Backing</b>	PVC

# Frontrunner Brush Wide

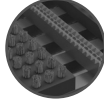


## Data sheet

### Colours:



Black



Dark grey

More colours available upon request

### Installation:

Frontrunner Brush Wide's one-piece construction means installation is simple:

- No special tools or previous site visits
- Fits with different well depths
- Contours to the floor

[Watch](#) or download the [recessed entrance matting installation instructions](#) and the [surface-mounted installation instructions](#).

### Cleaning:

Keeping Frontrunner Brush Wide looking good is easy:

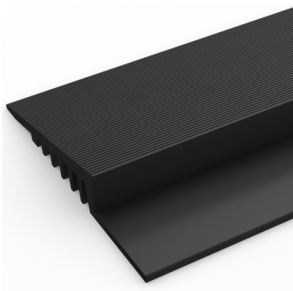
- Reduces cleaning intervals
- Simply roll or lift to clean
- No special tools needed
- Easy to clean using a vacuum, plus a coarse brush for clearing the debris in the grid

[Watch](#) or [download](#) the the cleaning instructions.

### Ancillaries:

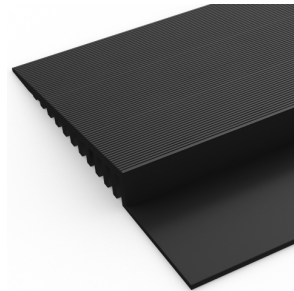
#### > For surface mounted installations

#### PVC edging (H: 14mm,W: 60mm)



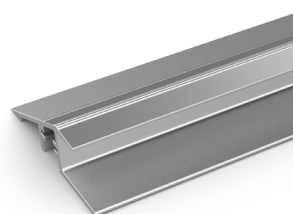
Supplied in rolls of 10.1m (33') length with cold welding paste. Comes in black, dark grey, dark brown, holly green, Oxford blue, yellow. Size: 14mm x 60mm x 10.1m (9/16" x 2 1/2" x 33')

#### PVC edging (H: 14mm,W: 100mm)



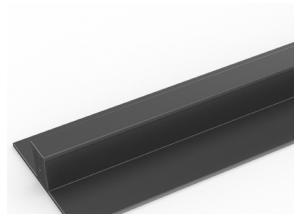
Supplied in rolls of 10.1m (33') length with cold welding paste. Comes in black, dark grey and yellow. Size: 14mm x 100mm x 10.1m (9/16" x 3 3/4" x 33')

#### Aluminium edging (H: 14mm)



Supplied in sections of 2m (6'6") length with fixing screws and plugs. Comes in anodised aluminium and powder coated yellow. Size: 14mm x 45mm x 2m (9/16" x 1 13/16" x 6'6")

#### PVC snap track (H: 14mm)



Two-part snap track that can be welded together to join rolls end-to-end or side-to-side to cover large areas. Supplied with cold welding paste. Comes in black and dark grey. Size: 14mm x 2.5m (9/16" x 8'2").

## Data sheet

### Ancillaries:

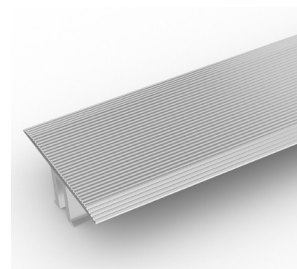
#### > For recessed installations

##### T frame (H: 14mm)



You can use a T frame (27mm) to divide the matting into sections left-to-right – this makes it easier to lift and clean. Supplied in sections of 3m (10') length with fixing screws and plugs. Comes in anodised aluminium, powder coated dark grey and black

##### TL frame (H: 14mm)



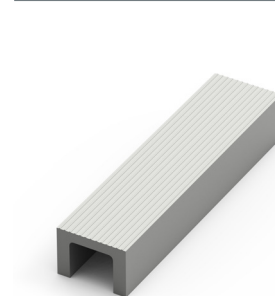
You can use a T/L frame (55mm) to divide the matting into sections left-to-right – this makes it easier to lift and clean. Supplied in sections of 3m (10') length with fixing screws and plugs. Comes in anodised aluminium

##### H section (H: 14mm)



If the front-to-back dimension of the mat well is greater than the final width of your matting, you may need a H section to secure the different sections together. Supplied in sections of 3m (10') length, with fixing screws and plugs. Comes in black, with mat insert colour specified. Size: 14mm x 13mm (9/16 x 1/2")

##### U section (H: 14mm)



If the front-to-back dimension of the mat well is greater than the final width of your matting, you may need a U section to secure the different sections together. Supplied in sections of 3m (10') length, with fixing screws and plugs. Comes in anodised aluminium, powder coated dark grey and black. Size: 14mm x 19mm (9/16" x 3/4")

##### L frame (H: 15mm)



Installing around a circular door or non rectangular space? You'll need a L frame to secure the matting. Size: 15mm x 2.7m length (5/8" x 8')