

Frontrunner Brush

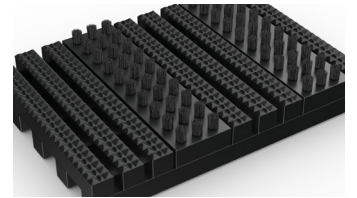


External entrance matting with heavy-duty brush inserts for maximum dirt removal.



Stop snow, ice and dirt in its tracks with Frontrunner Brush, an extra aggressive entrance mat designed for extreme weather conditions.

Heavy-duty brush strips scrape shoes clean, while the open grid traps and collects the debris, preventing it from being walked inside. Frontrunner Brush works as a standalone entrance mat, or you can pair it with a mat specifically designed for inside, like Frontrunner Plus.



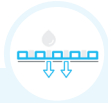
Features:



Diamond cut pattern



Two layer open-grid construction



Nylon brush inserts



Comes in 10m (33') rolls or modules



Made from flexible PVC



Benefits:



Slip resistant, high soil removal



Excellent drainage



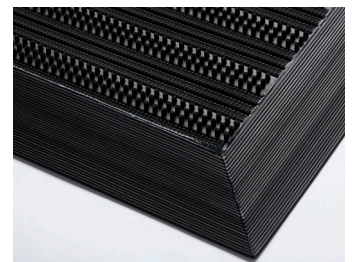
Scrapes shoes clean



Seamless installation



Easy to cut to fit on site, contours to uneven surfaces



Plastic Extruders Ltd.

Russell Gardens, Wickford
Essex, SS11 8DN
+44 (0) 1268 571 116

UK + USA manufactured
matting products:
plastexmatting.com



Frontrunner Brush



Data sheet

Standard sizes:

Product	Frontrunner Brush
Height	14 - 19mm (9/16" - 3/4")
Standard roll options	10 x 0.6m (33' x 2')
	10 x 0.91m (33' x 3')
	5 x 1.2m (16'6" x 4')
Standard module options	0.8 x 1.2m (2'7" x 4')
	1 x 1.5m (3'3" x 4'11")
	1.1 x 2m (3'7" x 6'7")
Weight	12.7 kg/m ² (2.6 lb/sq.ft)

Surface modules are supplied with factory fitted PVC ramped edging to four sides.

Tolerances:

	Height (+/- 0.5mm)	Length (0+0.3mm)	Width (0+2mm)
Frontrunner Brush	14/19 mm	10 m	60 cm 91 cm
	14/19 mm	5 m	120 cm

All dimensions are nominal

PVC grid technical information:

Acoustic	Excellent sound absorption
Chemical	Resistant to most acids, alkalines and oils. You can read more about specific chemical resistances by downloading this information sheet
Composition	Flexible Polyvinyl Chloride (PVC)
Environment	We don't use any substances included in the SVHC list under REACH in any of our matting products.
Fire	EN ISO 13501-1:2007-Cfl-S2. Nylon brush fibres: UL94-V2
Reversion	Thermoplastic shrinkage can result in size reductions up to 2%. This may be accelerated in hot environments. You can read more about the causes of shrinkage by downloading this information sheet .
Thermal	Designed to function at temperatures from -23°C and up to +60°C. Slight size variation may occur at temperature extremes.
UV light	Resistant to PVC degradation
Warranty	Two years. Visit our policies page for more information about warranties

Nylon brush inserts technical information:

Construction	Aligned tufting
Bristle diameter	0.3mm
Insert thickness	12mm
Bristle content	Nylon 6.6 monofilaments
Bristle height	4.5mm
Backing	PVC

Frontrunner Brush

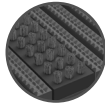


Data sheet

Colours:



Black



Dark grey

More colours
available
upon request

Installation:

Frontrunner Brush's one-piece construction means installation is simple:

- No special tools or previous site visits
- Fits with different well depths
- Contours to the floor

[Watch](#) or download the [recessed entrance matting installation instructions](#) and the [surface-mounted installation instructions](#).

Cleaning:

Keeping Frontrunner Brush looking good is easy:

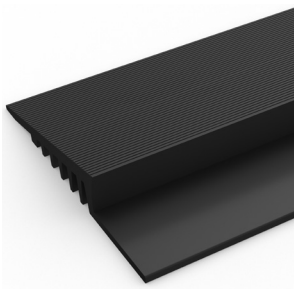
- Reduces cleaning intervals
- Simply roll or lift to clean
- No special tools needed
- Easy to clean using a vacuum, plus a coarse brush for clearing the debris in the grid

[Watch](#) or [download](#) the the cleaning instructions.

Ancillaries:

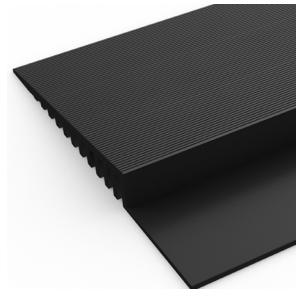
> For surface mounted installations

PVC edging (H: 14mm,W: 60mm)



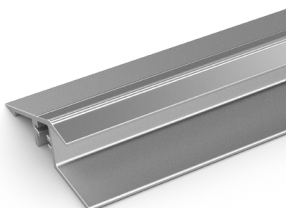
Supplied in rolls of 10.1m (33') length with cold welding paste. Comes in black, dark grey, dark brown, holly green, Oxford blue, yellow. Size: 14mm x 60mm x 10.1m (9/16" x 2 1/2" x 33')

PVC edging (H: 14mm,W: 100mm)



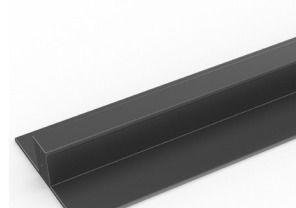
Supplied in rolls of 10.1m (33') length with cold welding paste. Comes in black, dark grey and yellow. Size: 14mm x 100mm x 10.1m (9/16" x 3 3/4" x 33')

Aluminium edging (H: 14mm)



Supplied in sections of 2m (6'6") length with fixing screws and plugs. Comes in anodised aluminium and powder coated yellow. Size: 14mm x 45mm x 2m (9/16" x 1 13/16" x 6'6")

PVC snap track (H: 14mm)



Two-part snap track that can be welded together to join rolls end-to-end or side-to-side to cover large areas. Supplied with cold welding paste. Comes in black and dark grey. Size: 14mm x 2.5m (9/16" x 8'2").

Ancillaries:

> For recessed installations

R frame (H: 14mm)



You'll need these to secure the matting on the left-to-right edges. Supplied in sections of 3m (10') length with fixing screws and plugs. Comes in anodised aluminium, powder coated dark grey and black. Size: 14mm x 12mm (9/16" x 15/32")

J frame (H: 18mm)



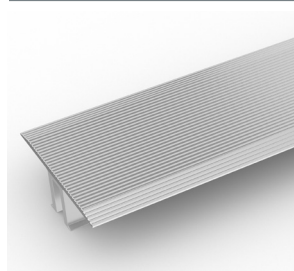
Installing Frontrunner against a wall? You'll need a J frame to secure the matting on the left-to-right edges. Supplied in sections of 3m (10') length with fixing screws and plugs. Comes in dark grey and black. Size: 18mm x 60mm (1 1/16" x 2 3/8")

T frame (H: 14mm)



You can use a T frame (27mm) to divide the matting into sections left-to-right – this makes it easier to lift and clean. Supplied in sections of 3m (10') length with fixing screws and plugs. Comes in anodised aluminium, powder coated dark grey and black

TL frame (H: 14mm)



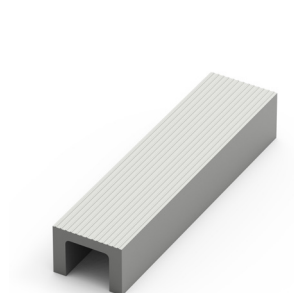
You can use a T/L frame (55mm) to divide the matting into sections left-to-right – this makes it easier to lift and clean. Supplied in sections of 3m (10') length with fixing screws and plugs. Comes in anodised aluminium

H section (H: 14mm)



If the front-to-back dimension of the mat well is greater than the final width of your matting, you may need a H section to secure the different sections together. Supplied in sections of 3m (10') length, with fixing screws and plugs. Comes in black, with mat insert colour specified. Size: 14mm x 13mm (9/16 x 1/2")

U section (H: 14mm)



If the front-to-back dimension of the mat well is greater than the final width of your matting, you may need a U section to secure the different sections together. Supplied in sections of 3m (10') length, with fixing screws and plugs. Comes in anodised aluminium, powder coated dark grey and black. Size: 14mm x 19mm (9/16" x 3/4")

L frame (H: 15mm)



Installing around a circular door or non rectangular space? You'll need a L frame to secure the matting. Size: 15mm x 2.7m length (5/8" x 8')