

Frontrunner Entry



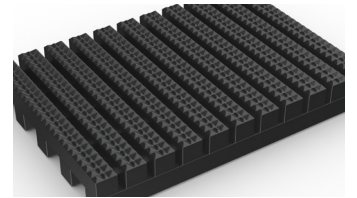
Open-grid, slip-resistant entrance matting designed for high traffic areas.



Set the scene with Frontrunner Entry, the perfect entrance matting for high traffic areas.

The mat's aggressive tread pattern scrapes shoes and wheels clean, while the open grid traps and collects the dirt and debris, preventing it from being tracked inside. This expands the life of your floor finishes and keeps interiors looking stylish for longer.

Working with ceramic floor tiles or carpet? Frontrunner Entry also comes in a 1 3/32" low profile, which means you don't need to create a deeper mat well in the existing subfloor.



Features:



Diamond cut pattern



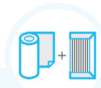
Two layer open-grid construction



Close mesh grid



Made from flexible PVC



Comes in 33' (10m) rolls or modules



Benefits:



Certified slip resistant (DIN 51130:R11, ASTM 1677:0.6/0.6)



Excellent drainage (DIN 51130:V10)



Wheel-and-heel proof



Easy to cut on site, contours to uneven surfaces



Seamless installation



Plastex Matting Inc.

120 55th St NE
Fort Payne, AL 35967
+1 256 845 7725

USA + UK manufactured matting products:
plastexmatting.com

Frontrunner Entry

Data sheet



Standard sizes:

Product	Frontrunner Entry	Low Profile
Height	9/16" (14mm)	13/32" (10.5mm)
Standard roll options	33' x 2' (10 x 0.6m)	33' x 2' (10 x 0.6m)
	33' x 3' (10 x 0.91m)	33' x 3' (10 x 0.91m)
	33' x 4' (10 x 1.2m)	33' x 3' (10 x 1.2m)
Standard module option	2'7" x 4' (0.8 x 1.2m)	
	3'3" x 4'11" (1 x 1.5m)	
	3'7" x 6'7" (1.1 x 2m)	
Weight	2lbs/sq.ft (10.5kg/m ²)	1.6lbs/sq.ft (8.7kg/m ²)

Surface modules are supplied with factory fitted PVC ramped edging to four sides

Tolerances:

	Height (+/- 0.05")	Length (0+1.0')	Width (+/- 1/2")
Frontrunner Entry	9/16"	33'	2' 3' 4'
Frontrunner Entry Low Profile	13/32"	33'	2' 3' 4'

All dimensions are nominal

Technical information:

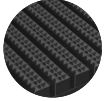
Acoustic	Excellent sound absorption
Chemical	Resistant to most acids, alkalines and oils. You can read more about specific chemical resistances by downloading this information sheet
Composition	Flexible Polyvinyl Chloride (PVC)
Environment	Frontrunner Entry is 100% recyclable. Our Frontrunner Entrance matting system qualifies for LEED IEQ Credit 5, and when produced in black or gray, our Frontrunner range may also qualify for LEED MR Credit 4. We don't use any substances included in the SVHC list under REACH in any of our matting products.
Reversion	Thermoplastic shrinkage can result in size reductions up to 2%. This may be accelerated in hot environments. You can read more about the causes of shrinkage by downloading this information sheet .
Slip resistance	ASTM F 1677- Dry/Wet: 0.6/0.6 DIN 51130: R11, V10
Thermal	Designed to function at temperatures from -9°F and up to +140°F. Slight size variation may occur at temperature extremes.
UV light	Resistant to PVC degradation
Warranty	Two years. Visit our policies page for more information about warranties

Frontrunner Entry

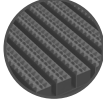


Product data sheet

Colors:



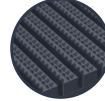
Black



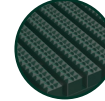
Dark gray



Dark brown



Oxford blue



Holly green

More colors
available
upon request

Installation:

Frontrunner Entry's one-piece construction means installation is simple:

- Cut to fit on site – no special tools or previous site visits needed
- Integrates with all internal floor coverings
- Fits with different well depths
- Contours to the floor

[Watch](#) or download the [recessed entrance matting installation instructions](#) and the [surface-mounted installation instructions](#)

Cleaning:

Keeping Frontrunner Entry looking good is easy:

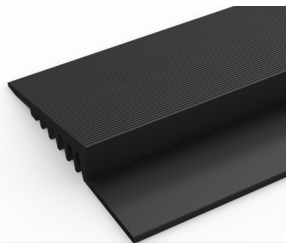
- Simply roll or lift to clean
- No special tools needed
- Easy to clean using a vacuum, plus a coarse brush for clearing the debris in the grid

[Watch](#) or [download](#) the the cleaning instructions.

Ancillaries:

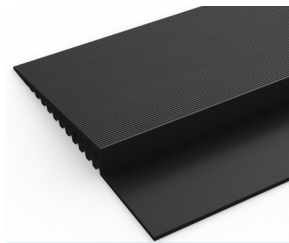
> For surface mounted installations

PVC edging (H: 9/16, W: 2 1/2")



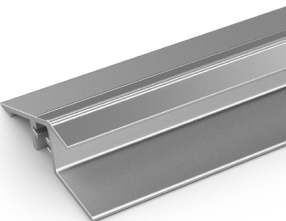
Supplied in rolls of 33' (10.1m) length with cold welding paste. Comes in black, dark gray, dark brown, holly green, Oxford blue, yellow. Size: 9/16" x 2 1/2" x 33' (14mm x 60mm x 10.1m)

PVC edging (H: 9/16, W: 3 3/4")



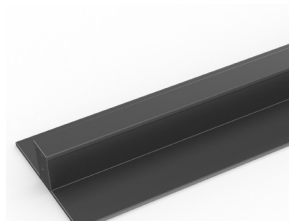
Supplied in rolls of 33' (10.1m) length with cold welding paste. Comes in black, dark gray and yellow. Size: 9/16" x 3 3/4" x 33' (14mm x 100mm x 10.1m)

Aluminium edging (H: 9/16")



Supplied in sections of 6'6" (2m) length with fixing screws and plugs. Comes in anodized aluminum and powder coated yellow. Size: 9/16" x 1 13/16" x 6'6" (14mm x 45mm x 2m)

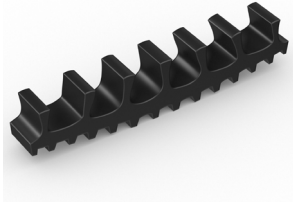
PVC snap track (H: 9/16")



Two-part snap track that can be welded together to join rolls end-to-end or side-to-side to cover large areas. Supplied with cold welding paste. Comes in dark gray. Size: 9/16" x 8'2" (14mm x 2.5m)

Ancillaries:

Connector clips: side-to-side (H: 9/16")



For joining sections of matting together side-to-side. Supplied in packs of 10

> For recessed installations

R frame (H: 9/16")



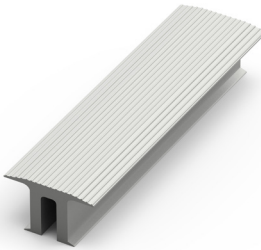
You'll need these to secure the matting on the left-to-right edges. Supplied in sections of 10' (3m) length with fixing screws and plugs. Comes in anodized aluminum, powder coated dark gray and black. Size: 9/16" x 15/32" (14mm x 12mm)

J frame (H: 1 1/16")



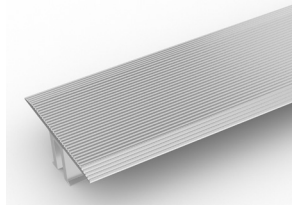
Installing Frontrunner against a wall? You'll need a J frame to secure the matting on the left-to-right edges. Supplied in sections of 10' (3m) length with fixing screws and plugs. Comes in dark gray and black. Size: 1 1/16" x 2 3/8" (18mm x 60mm)

T frame (H: 9/16")



You can use a T frame (1") to divide the matting into sections left-to-right – this makes it easier to lift and clean. Supplied in sections of 10' (3m) length with fixing screws and plugs. Comes in anodized aluminum, powder coated dark gray and black

TL frame (H: 9/16")



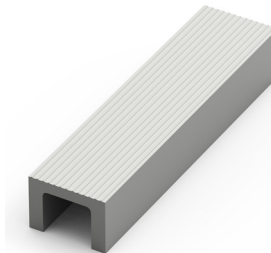
You can use a T/L frame (2") to divide the matting into sections left-to-right – this makes it easier to lift and clean. Supplied in sections of 10' (3m) length with fixing screws and plugs. Comes in anodized aluminium

H section (H: 9/16")



If the front-to-back dimension of the mat well is greater than the final width of your matting, you may need a H section to secure the different sections together. Supplied in sections of 12' (3.6m) length, with fixing screws and plugs. Comes in black, with mat insert colour specified. Size: 9/16" x 1/2" (14mm x 13mm).

U section (H: 9/16")



If the front-to-back dimension of the mat well is greater than the final width of your matting, you may need a U section to secure the different sections together. Supplied in sections of 10' (3m) length, with fixing screws and plugs. Comes in anodized aluminum, powder coated dark gray and black. Size: 9/16" x 3/4" (14mm x 19mm)

Ancillaries:

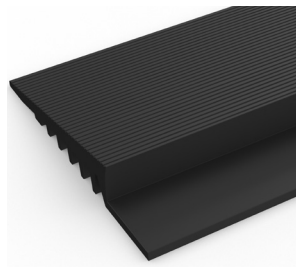
L frame (H: 5/8")



Installing around a circular door or non rectangular space? You'll need a L frame to secure the matting. Size: 5/8" x 8' (15mm x 2.7m length)

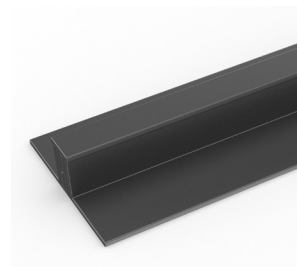
> For surface mounted installations: Low profile

PVC edging (H: 3/8", W: 2")



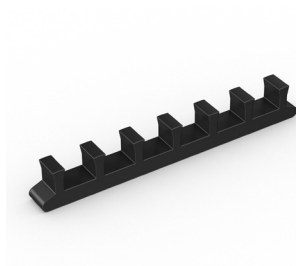
Supplied in rolls of 33' (10.1m) length with cold welding paste. Comes in black and dark gray. Size: 3/8" x 2" x 33' (10mm x 50mm x 10.1m)

PVC snap track (H: 13/32")



Two-part snap track that can be welded together to join rolls end-to-end or side-to-side to cover large areas. Supplied with cold welding paste. Comes in dark gray and black. Size: 13/32" x 8'2" (10.5mm x 2.5m)

Connector clips: side-to-side (H: 3/8")



For joining sections of low profile matting together side-to-side. Supplied in packs of 10

Ancillaries:

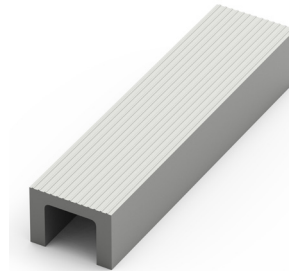
> For recessed installations: Low profile

R frame (H: 3/8")



You'll need these to secure the matting on the left-to-right edges. Supplied in sections of 10' (3m) length with fixing screws and plugs. Comes in anodized aluminum, powder coated dark gray and black. Size: 3/8" x 15/32" (10mm x 12mm)

U section (H: 3/8")



If the front-to-back dimension of the mat well is greater than the final width of your matting, you may need a U section to secure the different sections together. Supplied in sections of 10' (3m) length, with fixing screws and plugs. Comes in anodized aluminum, powder coated dark gray and black. Size: 3/8" x 11/16" (10mm x 18mm)

H section (H: 3/8")



If the front-to-back dimension of the mat well is greater than the final width of your matting, you may need a H section to secure the different sections together. Supplied in sections of 10' (3m) length, with fixing screws and plugs. Comes in black, with mat insert colour specified. Size: 3/8" x 1/2" (10mm x 13mm)

Z frame (H: 3/8")



Installing matting next to ceramic tiles? You'll need a Z frame to secure the matting. Supplied in sections of 11' (3.6m) length with fixing screws and plugs. Comes in anodized aluminum, powder coated dark gray and black. Size: 3/8" x 15/16" (10mm x 24mm)