

# Frontrunner Entry



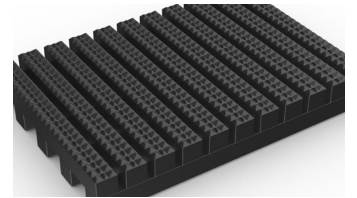
Open-grid, slip-resistant entrance matting designed for high traffic areas.



Set the scene with Frontrunner Entry, the perfect entrance matting for high traffic areas.

The mat's aggressive tread pattern scrapes shoes and wheels clean, while the open grid traps and collects the dirt and debris, preventing it from coming inside. This expands the life of your floor finishes and keeps interiors looking stylish for longer.

Working with ceramic floor tiles or carpet? Frontrunner Entry also comes in a 10.5mm low profile, which means you don't need to create a deeper mat well in the existing subfloor.



## Features:



Diamond cut pattern



Two layer open-grid construction



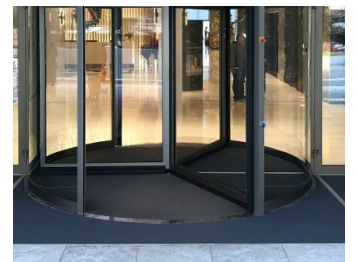
Close mesh grid



Made from flexible PVC



Comes in 10m (33') rolls or modules



## Benefits:



Certified slip resistant (DIN 51130:R11, ASTM 1677:0.6/0.6)



Excellent drainage (DIN 51130:V10)



Wheel-and-heel proof



Easy to cut on site, contours to uneven surfaces



Seamless installation



## Plastic Extruders Ltd.

Russell Gardens, Wickford  
Essex, SS11 8DN  
+44 (0) 1268 571 116

UK + USA manufactured  
matting products:  
[plastexmatting.com](http://plastexmatting.com)



# Fronrunner Entry



## Data sheet

### Standard sizes:

Product	Fronrunner Entry	Low Profile
Height	14mm (9/16")	10.5mm (13/32")
Standard roll options	10 x 0.6m (33' x 2')	10 x 0.6m (33' x 2')
	10 x 0.91m (33' x 3')	10 x 0.91m (33' x 3')
	5 x 1.2m (16'6" x 4')	5 x 1.2m (16'6" x 4')
Standard module options	0.8 x 1.2m (2'7" x 4')	
	1 x 1.5m (3'3" x 4'11")	
	1.1 x 2m (3'7" x 6'7")	
Weight	10.5 kg/m <sup>2</sup> (2 lbs/sq.ft)	8.7 kg/m <sup>2</sup> (1.6 lbs/sq.ft)

Surface modules are supplied with factory fitted PVC ramped edging to four sides

### Tolerances:

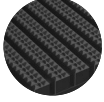
	Height (+/- 0.5mm)	Length (0+0.3mm)	Width (0+2mm)	
Fronrunner Entry	14 mm	10 m	60 cm	91 cm
	14 mm	5 m	120 cm	
Fronrunner Entry Low Profile	10.5 mm	10 m	60 cm	91 cm
	10.5 mm	5 m	120 cm	

All dimensions are nominal

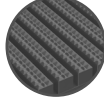
### Technical information:

Acoustic	Excellent sound absorption
Chemical	Resistant to most acids, alkalines and oils. You can read more about specific chemical resistances by <a href="#">downloading this information sheet</a>
Composition	Flexible Polyvinyl Chloride (PVC)
Environment	Fronrunner Entry is 100% recyclable. We don't use any substances included in the SVHC list under REACH in any of our matting products.
Fire	EN ISO 13501-1:2007-Bfl-S1, ASTM E648, Class I
Reversion	Thermoplastic shrinkage can result in size reductions up to 2%. This may be accelerated in hot environments. You can read more about the causes of shrinkage by <a href="#">downloading this information sheet</a> .
Slip resistance	ASTM F 1677- Dry/Wet: 0.6/0.6 DIN 51130: R11, V10
Thermal	Designed to function at temperatures from -23°C and up to +60°C. Slight size variation may occur at temperature extremes.
UV light	Resistant to PVC degradation
Warranty	Two years. Visit our <a href="#">policies page</a> for more information about warranties

### Colours:



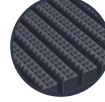
Black



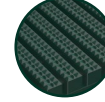
Dark grey



Dark brown



Oxford blue



Holly green

More colours available upon request

### Installation:

Frontrunner Entry's one-piece construction means installation is simple:

- Cut to fit on site – no special tools or previous site visits needed
- Integrates with all internal floor coverings
- Fits with different well depths
- Contours to the floor

[Watch](#) or download the [recessed entrance matting installation instructions](#) and the [surface-mounted installation instructions](#)

### Cleaning:

Keeping Frontrunner Entry looking good is easy:

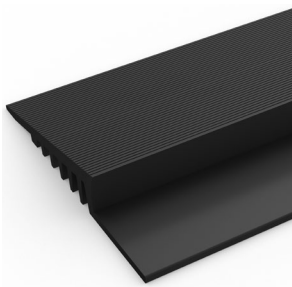
- Simply roll or lift to clean
- No special tools needed
- Easy to clean using a vacuum, plus a coarse brush for clearing the debris in the grid

[Watch](#) or [download](#) the the cleaning instructions.

### Ancillaries:

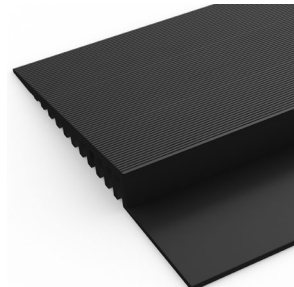
#### > For surface mounted installations

PVC edging (H: 14mm,W: 60mm)



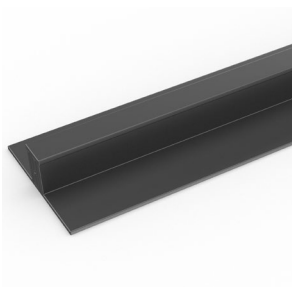
Supplied in rolls of 10.1m (33') length with cold welding paste. Comes in black, dark grey, dark brown, holly green, Oxford blue, yellow. Size: 14mm x 60mm x 10.1m (9/16" x 2 1/2" x 33')

PVC edging (H: 14mm,W: 100mm)



Supplied in rolls of 10.1m (33') length with cold welding paste. Comes in black, dark grey and yellow. Size: 14mm x 100mm x 10.1m (9/16" x 3 3/4" x 33')

PVC snap track (H: 14mm)



Two-part snap track that can be welded together to join rolls end-to-end or side-to-side to cover large areas. Supplied with cold welding paste. Comes in black and dark grey. Size: 14mm x 2.5m (9/16" x 8'2").

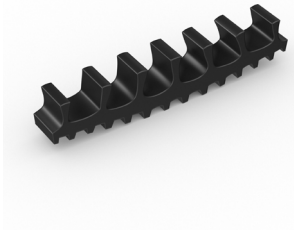
Aluminium edging (H: 14mm)



Supplied in sections of 2m (6'6") length with fixing screws and plugs. Comes in anodised aluminium and powder coated yellow. Size: 14mm x 45mm x 2m (9/16" x 1 13/16" x 6'6")

### Ancillaries:

Connector clips: side-to-side (H: 14mm and 10mm)



For joining sections of low profile matting together side-to-side. Supplied in packs of 10

### > For recessed installations

R frame (H: 14mm)



You'll need these to secure the matting on the left-to-right edges. Supplied in sections of 3m (10') length with fixing screws and plugs. Comes in anodised aluminium, powder coated dark grey and black. Size: 14mm x 12mm (9/16" x 15/32")

J frame (H: 18mm)



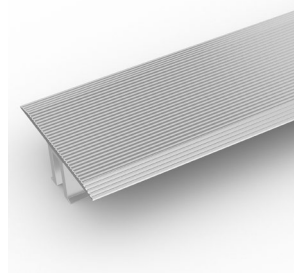
Installing Frontrunner against a wall? You'll need a J frame to secure the matting on the left-to-right edges. Supplied in sections of 3m (10') length with fixing screws and plugs. Comes in dark grey and black. Size: 18mm x 60mm (11/16" x 2 3/8")

T frame (H: 14mm)



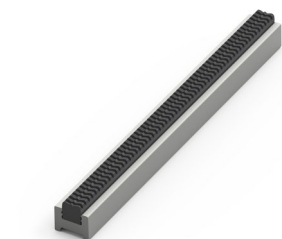
You can use a T frame (27mm) to divide the matting into sections left-to-right – this makes it easier to lift and clean. Supplied in sections of 3m (10') length with fixing screws and plugs. Comes in anodised aluminium, powder coated dark grey and black

TL frame (H: 14mm)



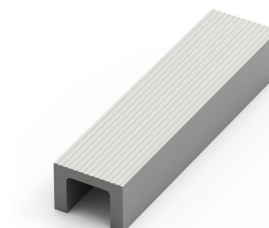
You can use a T/L frame (55mm) to divide the matting into sections left-to-right – this makes it easier to lift and clean. Supplied in sections of 3m (10') length with fixing screws and plugs. Comes in anodised aluminium

H section (H: 14mm)



If the front-to-back dimension of the mat well is greater than the final width of your matting, you may need a H section to secure the different sections together. Supplied in sections of 3m (10') length, with fixing screws and plugs. Comes in black, with mat insert colour specified. Size: 14mm x 13mm (9/16 x 1/2")

U section (H: 14mm)



If the front-to-back dimension of the mat well is greater than the final width of your matting, you may need a U section to secure the different sections together. Supplied in sections of 3m (10') length, with fixing screws and plugs. Comes in anodised aluminium, powder coated dark grey and black. Size: 14mm x 19mm (9/16" x 3/4")



### Ancillaries:

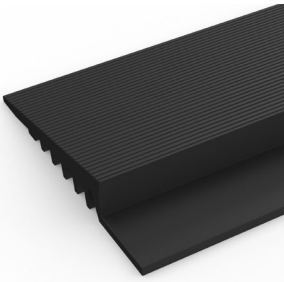
L frame (H: 15mm)



Installing around a circular door or non rectangular space? You'll need a L frame to secure the matting. Size: 15mm x 2.7m length (5/8" x 8')

### > For surface mounted installations: Low profile

PVC edging (H: 10mm, W: 50mm)



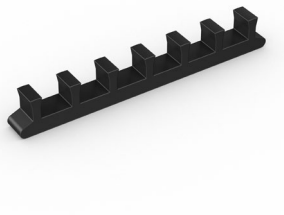
Supplied in rolls of 10.1m (33') length with cold welding paste. Comes in black and dark grey. Size: 10mm x 50mm x 10.1m (3/8" x 2" x 33')

PVC snap track (H: 10.5mm)



Two-part snap track that can be welded together to join rolls end-to-end or side-to-side to cover large areas. Supplied with cold welding paste. Comes in dark grey. Size: 10.5mm x 2.5m (13/32" x 8'2")

Connector clips: side-to-side (H: 10mm)



For joining sections of low profile matting together side-to-side. Supplied in packs of 10

### Ancillaries:

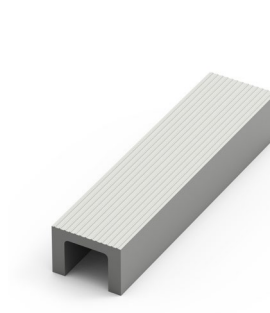
#### > For recessed installations: Low profile

##### R frame (H: 10mm)



You'll need these to secure the matting on the left-to-right edges. Supplied in sections of 3m (10') length with fixing screws and plugs. Comes in anodised aluminium, powder coated dark grey and black. Size: 10mm x 12mm (3/8" x 15/32")

##### U section (H: 10mm)



If the front-to-back dimension of the mat well is greater than the final width of your matting, you may need a U section to secure the different sections together. Supplied in sections of 3m (10') length, with fixing screws and plugs. Comes in anodised aluminium, powder coated dark grey and black. Size: 10mm x 18mm (3/8" x 11/16")

##### H section (H: 10mm)



If the front-to-back dimension of the mat well is greater than the final width of your matting, you may need a H section to secure the different sections together. Supplied in sections of 3m (10') length, with fixing screws and plugs. Comes in black, with mat insert colour specified. Size: 10mm x 13mm (3/8" x 1/2")

##### Z frame (H: 10mm)



Installing matting next to ceramic tiles? You'll need a Z frame to secure the matting. Supplied in sections of 3.6m (11') length with fixing screws and plugs. Comes in anodised aluminium, powder coated dark grey and black. Size: 10mm x 24mm (3/8" x 15/16")