

Frontrunner Plus

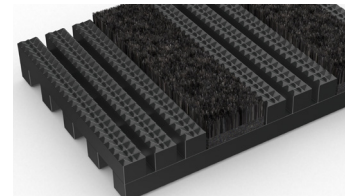


Internal entrance matting with carpet inserts for maximum moisture removal.



Frontrunner Plus is an absorbent entrance mat specifically designed to not only stop dirt in its tracks, but moisture too.

The mat's aggressive tread pattern scrapes shoes and wheels clean, while heavy-duty absorbent carpet inserts removes and dries any moisture. This reduces maintenance of internal areas, expands the life of your floor finishes and keeps interiors looking stylish for longer. Slip resistant, wheel-proof and heel-proof, Frontrunner Plus is an ideal choice for commercial entrances, especially businesses and shopping centers with high traffic. Choose from 50 color and style combinations – you can also add a logo panel for added branding.



Features:



Diamond cut pattern



Two layer open-grid construction



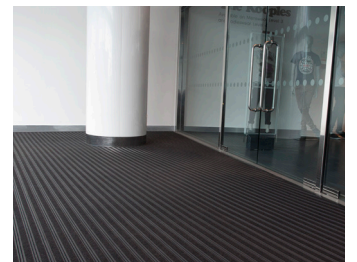
Absorbent carpet inserts



Close mesh grid



Comes in 33' (10m) rolls or modules



Benefits:



Slip resistant, high soil removal



Excellent drainage



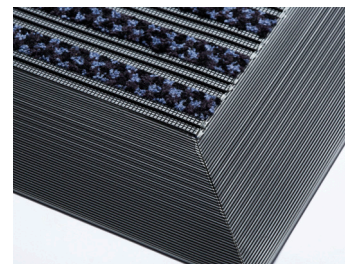
Maximum moisture removal



Heel-and-wheel proof



Seamless installation



Plastex Matting Inc.

120 55th St NE
Fort Payne, AL 35967
+1 256 845 7725

USA + UK manufactured matting products:
plastexmatting.com

Frontrunner Plus



Data sheet

Standard sizes:

Product	Frontrunner Plus	Low Profile
Height	9/16" – 5/8" (14-16mm)	13/32" - 1/2" (10.5-12mm)
Standard roll options	33' x 2' (10 x 0.6m)	33' x 2' (10 x 0.6m)
	33' x 3' (10 x 0.91m)	33' x 3' (10 x 0.91m)
	33' x 4' (10 x 1.2m)	33' x 4' (10 x 1.2m)
Standard module option	2'7" x 4' (0.8 x 1.2m)	
	3'3" x 4'11" (1 x 1.5m)	
	3'7" x 6'7" (1.1 x 2m)	
Weight	2lbs/sq.ft (10.5 kg/m ²)	1.8lbs/sq.ft (8.7kg/m ²)

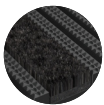
Surface modules are supplied with factory fitted PVC ramped edging to four sides

Tolerances:

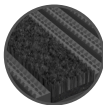
	Height (+/- 0.05")	Length (0+1.0')	Width (+/- 1/2")
Frontrunner Plus	9/16"	33'	2' 3' 4'
Frontrunner Plus Low Profile	13/32"	33'	2' 3' 4'

All dimensions are nominal

Colors:



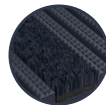
Black



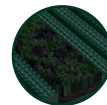
Dark gray



Dark brown



Oxford blue



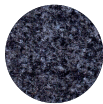
Green

More colors
available
upon request

Carpets:



Brown 605



Gray 606



Dark gray 607



Black 608

PVC grid technical information:

Acoustic	Excellent sound absorption
Chemical	Resistant to most acids, alkalines and oils. You can read more about specific chemical resistances by downloading this information sheet
Composition	Flexible Polyvinyl Chloride (PVC)
Environment	Our Frontrunner system qualifies for LEED IEQ Credit 5, and when produced in black or gray, Frontrunner may also qualify for LEED MR Credit 4. We don't use any substances included in the SVHC list under REACH in any of our matting products.
Reversion	Thermoplastic shrinkage can result in size reductions up to 2%. This may be accelerated in hot environments. You can read more about the causes of shrinkage by downloading this information sheet .
Slip resistance	ASTM E303 Dry/Wet with lines along-lines across 72-97 / 65-81
Thermal	Designed to function at temperatures from -9°F and up to +140°F. Slight size variation may occur at temperature extremes.
UV light	Resistant to PVC degradation
Warranty	Frontrunner Plus: three years. Frontrunner Plus Low Profile: two years. Visit our policies page or more information about warranties

Absorbent inserts (Zeno 600 series) technical information:

Wear classification	EN 1307 - 33, Commercial heavy
Pile material	ECONYL®, 100% regenerated polyamide BCF
Tuft base	100% regenerated non woven polyester Colback™
Phthalate Free backing	Waterproof Comfort™ vinyl
Total height	EN 1765 ± 11/32"
Pile height	EN 1766 ± 17/64"
Total weight	EN 8543 ± 101.09 lb/ft ²
Pile yarn weight	± 19.46 lb/ft ²
Pile density	± 0.00459 lbs/in ³
Fire	EN ISO 13501-1:2007 Cf1-S1
Suitable for castor chairs	EN 985 A, intensive use r=2.8
Colours	10

Installation:

Frontrunner Plus' one-piece construction means installation is simple:

- Cut to fit on site – no special tools or previous site visits needed
- Integrates with all internal floor coverings
- Fits with different well depths
- Contours to the floor

[Watch](#) or download the [recessed entrance matting installation instructions](#) and the [surface-mounted installation instructions](#).

Cleaning:

Keeping Frontrunner Plus looking good is easy:

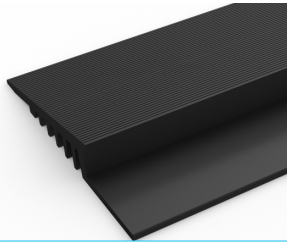
- Reduces cleaning intervals
- Simply roll or lift to clean
- No special tools needed
- Easy to vacuum

[Watch](#) or [download](#) the the [cleaning instructions](#).

Ancillaries:

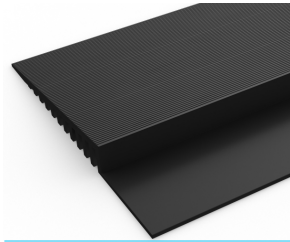
> For surface mounted installations

PVC edging (H: 9/16, W: 2 1/2")



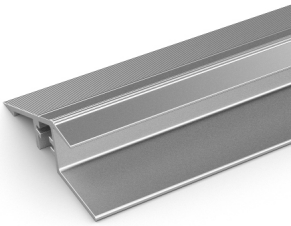
Supplied in rolls of 33' (10.1m) length with cold welding paste. Comes in black, dark gray, dark brown, holly green, Oxford blue, yellow. Size: 9/16" x 2 1/2" x 33' (14mm x 60mm x 10.1m)

PVC edging (H: 9/16, W: 3 3/4")



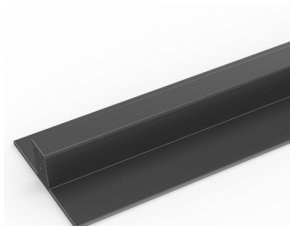
Supplied in rolls of 33' (10.1m) length with cold welding paste. Comes in black, dark gray and yellow. Size: 9/16" x 3 3/4" x 33' (14mm x 100mm x 10.1m)

Aluminium edging (H: 9/16")



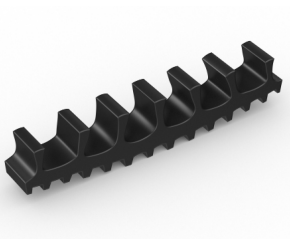
Supplied in sections of 6'6" (2m) length with fixing screws and plugs. Comes in anodized aluminum and powder coated yellow. Size: 9/16" x 1 13/16" x 6'6" (15mm x 45mm x 2m)

PVC snap track (H: 9/16")



Two-part snap track that can be welded together to join rolls end-to-end or side-to-side to cover large areas. Supplied with cold welding paste. Comes in dark gray. Size: 9/16" x 8'2" (14mm x 2.5m)

Connector clips: side-to-side (H: 9/16")



For joining sections of matting together side-to-side. Supplied in packs of 10

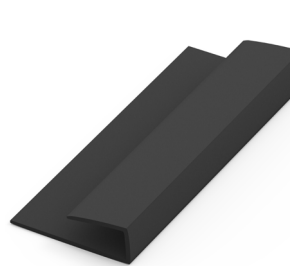
> For recessed installations

R frame (H: 9/16")



You'll need these to secure the matting on the left-to-right edges. Supplied in sections of 10' (3m) length with fixing screws and plugs. Comes in anodized aluminum, powder coated dark gray and black. Size: 9/16" x 15/32" (14mm x 12mm)

J frame (H: 1 1/16")



Installing Frontrunner against a wall? You'll need a J frame to secure the matting on the left-to-right edges. Supplied in sections of 10' (3m) length with fixing screws and plugs. Comes in dark gray and black. Size: 1 1/16" x 2 3/8" (18mm x 60mm)

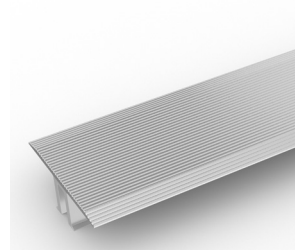
Ancillaries:

T frame (H: 9/16")



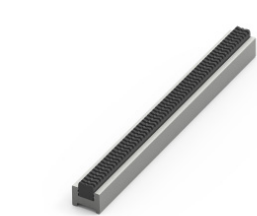
You can use a T frame (1") to divide the matting into sections left-to-right – this makes it easier to lift and clean. Supplied in sections of 10' (3m) length with fixing screws and plugs. Comes in anodized aluminum, powder coated dark gray and black

TL frame (H: 9/16")



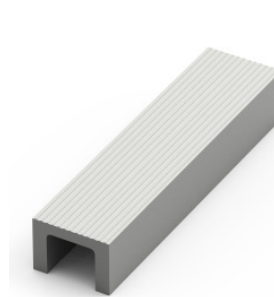
You can use a T/L frame (2") to divide the matting into sections left-to-right – this makes it easier to lift and clean. Supplied in sections of 10' (3m) length with fixing screws and plugs. Comes in anodized aluminium

H section (H: 9/16")



If the front-to-back dimension of the mat well is greater than the final width of your matting, you may need a H section to secure the different sections together. Supplied in sections of 9/16" (3m) length, with fixing screws and plugs. Comes in black, with mat insert colour specified. Size: 3/8" x 1/2" (14mm x 13mm).

U section (H: 9/16")



If the front-to-back dimension of the mat well is greater than the final width of your matting, you may need a U section to secure the different sections together. Supplied in sections of 10' (3m) length, with fixing screws and plugs. Comes in anodized aluminum, powder coated dark gray and black. Size: 9/16" x 3/4" (14mm x 19mm)

L frame (H: 5/8")

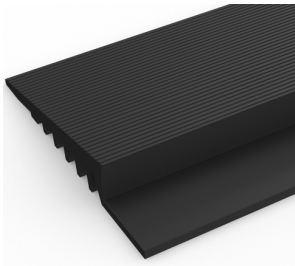


Installing around a circular door or non rectangular space? You'll need a L frame to secure the matting. Size: 5/8" x 8' (15mm x 2.7m length)

Ancillaries:

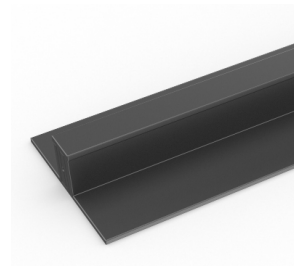
> For surface mounted installations: Low profile

PVC edging (H: 3/8", W: 2")



Supplied in rolls of 33' (10.1m) length with cold welding paste. Comes in black and dark gray. Size: 3/8" x 2" x 33' (10mm x 50mm x 10.1m)

PVC snap track (H: 3/8")



Two-part snap track that can be welded together to join rolls end-to-end or side-to-side to cover large areas. Supplied with cold welding paste. Comes in dark gray and black. Size: 13/32" x 8'2" (10.5mm x 2.5m)

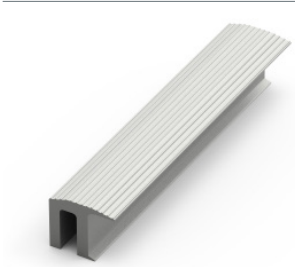
Connector clips: side-to-side (H: 3/8")



For joining sections of low profile matting together side-to-side. Supplied in packs of 10

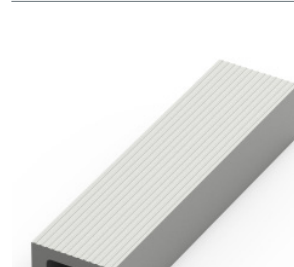
> For recessed installations: Low profile

R frame (H: 3/8")



You'll need these to secure the matting on the left-to-right edges. Supplied in sections of 10' (3m) length with fixing screws and plugs. Comes in anodized aluminum, powder coated dark gray and black. Size: 3/8" x 15/32" (10mm x 12mm)

U section (H: 3/8")



If the front-to-back dimension of the mat well is greater than the final width of your matting, you may need a U section to secure the different sections together. Supplied in sections of 10' (3m) length, with fixing screws and plugs. Comes in anodized aluminum, powder coated dark gray and black. Size: 3/8" x 11/16" (10mm x 18mm)

H section (H: 3/8")



If the front-to-back dimension of the mat well is greater than the final width of your matting, you may need a H section to secure the different sections together. Supplied in sections of 10' (3m) length, with fixing screws and plugs. Comes in black, with mat insert colour specified. Size: 3/8" x 1/2" (10mm x 13mm)

Z frame (H: 3/8")



Installing matting next to ceramic tiles? You'll need a Z frame to secure the matting. Supplied in sections of 11' (3.6m) length with fixing screws and plugs. Comes in anodized aluminum, powder coated dark gray and black. Size: 3/8" x 15/16" (10mm x 24mm)