

Frontrunner Entrance Flooring System



SB and SB+ – installation instructions

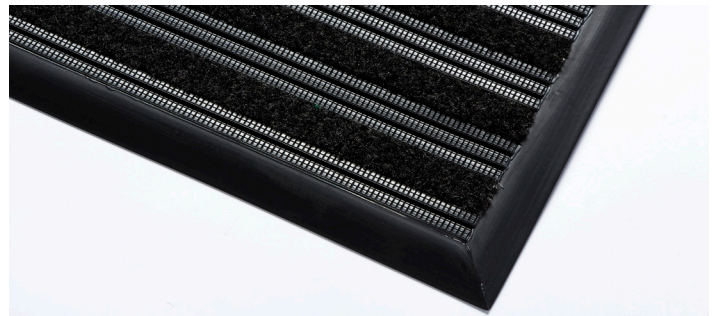
Please read these instructions carefully and completely before commencing installation.

1. PREPARATION

- a) It is recommended that the entrance flooring system be installed as one of the final jobs to avoid damage associated with general building works.
- b) Unpack and inspect all materials to ensure they are free from transport damage.
- c) Check all components and tools required are available.
- d) Unroll/unpack the sections of matting and lay in a clean dry protected area to acclimatise and relax. Depending on duration of storage and ambient temperature, this process may take up to 24 hours.
- e) When handling the rolls of large panels of matting at any time during the installation, avoid dragging or rough handling that may cause stretching or distortion.

2. EQUIPMENT REQUIRED

- Frontrunner SB or SB+ entrance flooring matting (supplied)
- PVC sections (as required)
- Utility knife and straight edge for trimming sections of mat
- Adhesive (as required) for sticking down Frontrunner SB and SB+ mats (if applicable)



3. TYPE OF INSTALLATION

Loose laid

Small areas of mats can be loose laid. In these cases, ensure that the sub floor is clean, dry and level. A PVC edging is recommended to finish any traffic edges.

Adhered

For larger installations and/or high traffic areas, it is recommended to adhere Frontrunner SB/SB+ to the sub-floor. Adhesion must be carried out in accordance with instructions of the adhesive manufacturer. In the market place there are many adhesives suitable for PVC floor coverings. Before commencing installation, thoroughly clean the sub-floor and visually check that it is smooth and sound.

Plastex Matting Inc.

120 55th St NE
Fort Payne, AL 35967
+1 256 845 7725

USA + UK manufactured
matting products:
[plastexmatting.com](https://www.plastexmatting.com)

Watch our Frontrunner entrance system in action:
<https://www.plastexmatting.com/uk/videos>

Frontrunner Entrance Flooring System



SB and SB+ – installation instructions

4. INSTALLING THE MATTING

Frontrunner SB and SB+ should be installed wall to wall, or edge to edge with adjacent floor coverings in the entrance area. The matting should be installed so that ribs are against traffic flow, running left to right as entering.

- Cut matting to length using a utility knife and a straight edge. Allow extra 5cm (2") on length (left to right) for final trimming of ends once fully adhered.
- Ensure top surface is uppermost when cutting.
- Due to the elastic nature of the product, it is important to avoid rough handling of product during installation thus preventing possible stretching.

Installing multiple widths of matting (front to back dimension)

- Where the front to back dimension of the entrance area is greater than 100cm, multiple panels will be required.
- Frontrunner SB & SB+ rolls are supplied with one flush edge (left) and one edge where the base protrudes (right).
- Lay and cut multiple widths as described in step 4 above and lay flush edge to protruding edge to maintain a visually uniform spacing of the ribs.
- 10m and 20m rolls of Frontrunner SB+ are supplied with 2 plastic ribs on either side. When installing multiple widths of Frontrunner SB+, it will be recommended to trim off 1 bar to ensure visually uniform spacing of the ribs.
- That this will reduce the effective width to 98cm.
- Ensure multiple panels are orientated in the same direction to avoid shade/pattern clash.
- Trim extremities flush to surrounding floor or wall finishes.

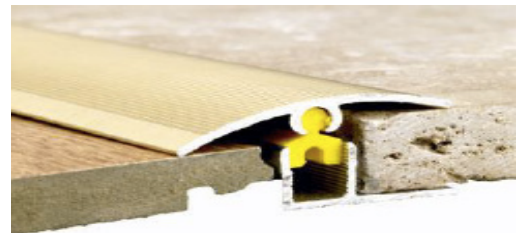


5. FINISHING ENDS / MATTING PERIMETER

Finish any exposed edges or transitions to other floor surfaces with locally available aluminium floor trims as examples below:



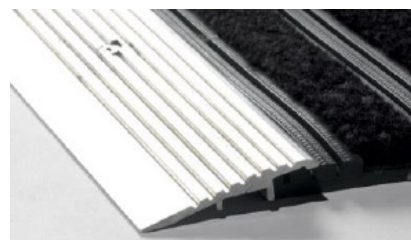
Same height between floors



Different height between floors



For edges, use PVC edging



For edges, use locally available aluminium

Cover and protect entrance flooring system until final cleaning prior to opening.