

# Gateway Plus (Frontrunner Plus)



Internal entrance matting with carpet inserts for maximum moisture removal.



**Gateway Plus is an absorbent entrance mat specifically designed to not only stop dirt in its tracks, but moisture too.**

The mat's aggressive tread pattern scrapes shoes and wheels clean, while heavy-duty absorbent carpet inserts removes and dries any moisture. This reduces cleaning internals, expands the life of your floor finishes and keeps interiors looking stylish for longer. Slip resistant, wheel-proof and heel-proof, Gateway Plus is an ideal choice for commercial entrances, especially for businesses and shopping centres with high traffic. Choose from 50 colour and style combinations – you can also add a logo panel for added branding.



## Features:



Embossed pattern



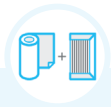
Two layer open-grid construction



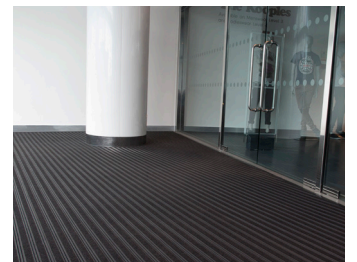
Absorbent carpet inserts



Close mesh grid



Comes in 10m (33') rolls or modules



## Benefits:



Slip resistant, high soil removal



Excellent drainage



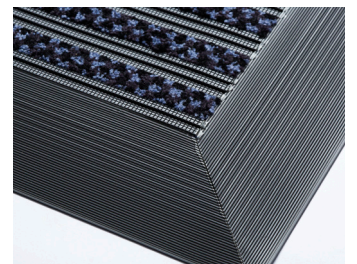
Maximum moisture removal



Heel-and-wheel proof



Seamless installation



## Plastex Matting Inc.

120 55th St NE  
Fort Payne, AL 35967  
+1 256 845 7725

USA + UK manufactured matting products:  
[plastexmatting.com](http://plastexmatting.com)

## Data sheet

### Standard sizes:

Product	Gateway 14 Plus	Gateway 10 Plus
Height	14-16mm (9/16" – 5/8")	10.5-12mm (13/32" - 1/2")
Standard roll options	10 x 0.6m (33' x 2')	10 x 0.6m (33' x 2')
	10 x 0.91m (33' x 3')	10 x 0.91m (33' x 3')
	5 x 1.2m (16'6" x 4')	5 x 1.2m (16'6" x 4')
Standard module option	0.8 x 1.2m (2'7" x 4')	
	1 x 1.5m (3'3" x 4'11")	
	1.1 x 2m (3'7" x 6'7")	
Weight	10.5 kg/m <sup>2</sup> (2lbs/sq.ft)	8.7kg/m <sup>2</sup> (1.6lbs/sq.ft)

Surface modules are supplied with factory fitted PVC ramped edging to four sides

### Tolerances:

	Height (+/- 0.5mm)	Length (0+0.3mm)	Width (0+2mm)
Gateway 14 Plus	14/16 mm	10 m	60 cm 91 cm
	14/16 mm	5 m	120 cm
Gateway 10 Plus	10.5/12 mm	10 m	60 cm 91 cm
	10.5/12 mm	5 m	120 cm

All dimensions are nominal

### Colours:



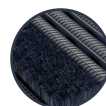
Black



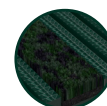
Dark grey



Dark brown



Oxford blue



Green

More colours available upon request

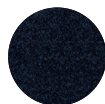
### Carpets:



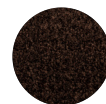
Black 608



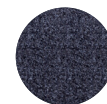
Dark grey 607



Blue 602



Brown 605



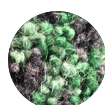
Grey 606



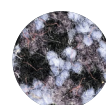
Slate



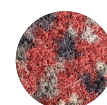
Basalt



Green



Grey



Sandstone

### PVC grid technical information:

<b>Acoustic</b>	Excellent sound absorption
<b>Chemical</b>	Resistant to most acids, alkalines and oils. You can read more about specific chemical resistances by <a href="#">downloading this information sheet</a>
<b>Composition</b>	Flexible Polyvinyl Chloride (PVC)
<b>Environment</b>	We don't use any substances included in the SVHC list under REACH in any of our matting products.
<b>Fire</b>	Gateway 14 Plus: EN ISO 13501-1:2007-Cfl-S1, ASTM E648 – Class I Gateway 10 Plus: EN ISO 13501-1:2007-Cfl-S2
<b>Reversion</b>	Thermoplastic shrinkage can result in size reductions up to 2%. This may be accelerated in hot environments. You can read more about the causes of shrinkage by <a href="#">downloading this information sheet</a> .
<b>Slip resistance</b>	ASTM E303 Dry/Wet with lines along-lines across 74-93 / 48-75
<b>Thermal</b>	Designed to function at temperatures from -23°C and up to +60°C. Slight size variation may occur at temperature extremes.
<b>UV light</b>	Resistant to PVC degradation
<b>Warranty</b>	Gateway 14 Plus: three years. Gateway 10 Plus: two years. Visit our <a href="#">policies page</a> for more information about warranties

### Absorbent inserts (Zeno 600 series) technical information:

<b>Wear classification</b>	EN 1307 - 33, Commercial heavy
<b>Pile material</b>	ECONYL®, 100% regenerated polyamide BCF
<b>Tuft base</b>	100% regenerated non woven polyester Colback™
<b>Phthalate Free backing</b>	Waterproof Comfort™ vinyl
<b>Total height</b>	EN 1765 ± 8.7 mm
<b>Pile height</b>	EN 1766 ± 6.7 mm
<b>Total weight</b>	EN 8543 ± 4260 g/m <sup>2</sup>
<b>Pile yarn weight</b>	± 820 g/m <sup>2</sup>
<b>Pile density</b>	± 0,127 g/cm <sup>3</sup>
<b>Fire</b>	EN ISO 13501-1:2007 Cfl-S1
<b>Suitable for castor chairs</b>	EN 985 A, intensive use r=2.8
<b>Colours</b>	10

#### Installation:

Gateway Plus' one-piece construction means installation is simple:

- Cut to fit on site – no special tools or previous site visits needed
- Integrates with all internal floor coverings
- Fits with different well depths
- Contours to the floor

[Watch](#) or download the [recessed entrance matting installation instructions](#) and the [surface-mounted installation instructions](#).

#### Cleaning:

Keeping Gateway Plus looking good is easy:

- Reduces cleaning intervals
- Simply roll or lift to clean
- No special tools needed
- Easy to vacuum

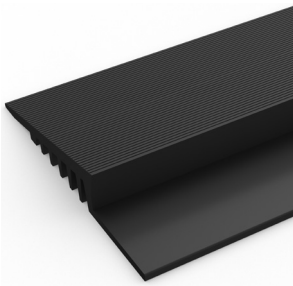
[Watch](#) or [download](#) the the cleaning instructions.

## Data sheet

### Ancillaries:

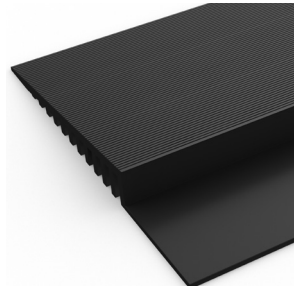
#### > For surface mounted installations: Gateway 14

##### PVC edging (H: 14mm, W: 60mm)



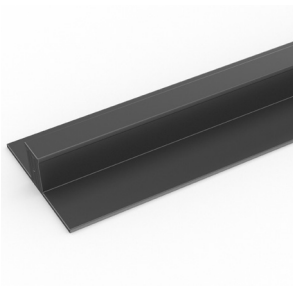
Supplied in rolls of 10.1m (33') length. One tube of cold welding paste recommended for every 10m of edging. Comes in black, dark grey, dark brown, holly green, Oxford blue, yellow. Size: 14mm x 60mm x 10.1m (9/16" x 2 1/2" x 33')

##### PVC edging (H: 14mm, W: 100mm)



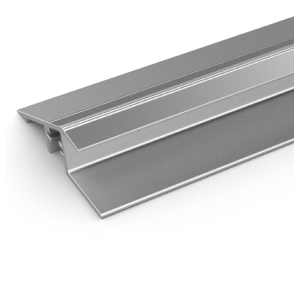
Supplied in rolls of 10.1m (33') length. One tube of cold welding paste recommended for every 10m of edging. Comes in black, dark grey and yellow. Size: 14mm x 100mm x 10.1m (9/16" x 3 3/4" x 33')

##### PVC snap track (H: 14mm)



Two-part snap track that can be welded together to join rolls end-to-end or side-to-side to cover large areas. We recommend one tube of cold welding paste for every 10m of edging. Comes in black and dark grey. Size: 14mm x 2.5m (9/16" x 8'2").

##### Aluminum edging (H: 15mm)



Supplied in sections of 2m (6'6") length with fixing screws and plugs. Comes in anodized aluminum and powder coated yellow. Size: 14mm x 45mm x 2m (9/16" x 1 13/16" x 6'6")

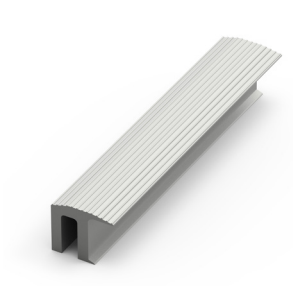
##### Connector clips: side-to-side (H: 14mm)



For joining sections of Gateway 10 Plus matting together side-to-side. Supplied in packs of 10

#### > For recessed installations: Gateway 14

##### R frame (H: 14mm)



You'll need these to secure the matting on the left-to-right edges. Supplied in sections of 3m (10') length with fixing screws and plugs. Comes in anodized aluminum, powder coated dark grey and black. Size: 14mm x 12mm (9/16" x 15/32")

##### J frame (H: 18mm)



Installing Gateway against a wall? You'll need a J frame to secure the matting on the left-to-right edges. Supplied in sections of 3m (10') length with fixing screws and plugs. Comes in dark grey and black. Size: 18mm x 60mm (1 1/16" x 2 3/8")

## Data sheet

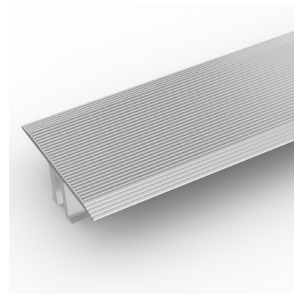
### Ancillaries:

#### T frame (H: 14mm)



You can use a T frame (27mm) to divide the matting into sections left-to-right – this makes it easier to lift and clean. Supplied in sections of 3m (10') length with fixing screws and plugs. Comes in anodized aluminum, powder coated dark grey and black

#### TL frame (H: 14mm)



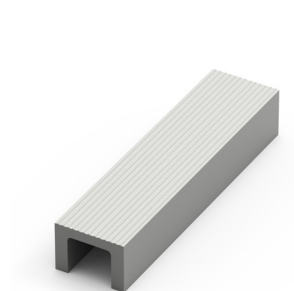
You can use a T/L frame (55mm) to divide the matting into sections left-to-right – this makes it easier to lift and clean. Supplied in sections of 3m (10') length with fixing screws and plugs. Comes in anodized aluminum

#### H section (H: 14mm)



If the front-to-back dimension of the mat well is greater than the final width of your matting, you may need a H section to secure the different sections together. Supplied in sections of 3m (10') length, with fixing screws and plugs. Comes in black, with mat insert colour specified. Size: 14mm x 13mm (9/16" x 1/2")

#### U section (H: 14mm)



If the front-to-back dimension of the mat well is greater than the final width of your matting, you may need a U section to secure the different sections together. Supplied in sections of 3m (10') length, with fixing screws and plugs. Comes in anodized aluminum, powder coated dark grey and black. Size: 14mm x 19mm (9/16" x 3/4")

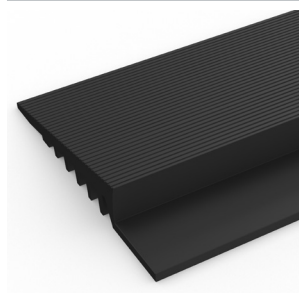
#### L frame (H: 15mm)



Installing around a circular door or non rectangular space? You'll need a L frame to secure the matting. Size: 15mm x 2.7m length (5/18" x 8')

### > For surface mounted installations: Gateway 10 Plus

#### PVC edging (H: 10mm, W: 50mm)



Supplied in rolls of 10.1m (33') length. One tube of cold welding paste recommended for every 10m of edging. Comes in black and dark grey. Size: 10mm x 50mm x 10.1m (3/8" x 2" x 33')

#### PVC snap track (H: 10.5mm)

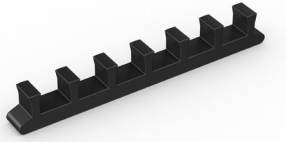


Two-part snap track that can be welded together to join rolls end-to-end or side-to-side to cover large areas. We recommend one tube of cold welding paste for every 10m of edging. Comes in dark grey. Size: 10.5mm x 2.5m (13/32" x 8'2")

## Data sheet

### Ancillaries:

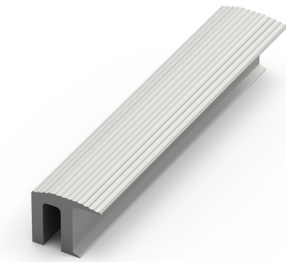
Connector clips: side-to-side (H: 10mm)



For joining sections of Gateway 10 Plus matting together side-to-side. Supplied in packs of 10

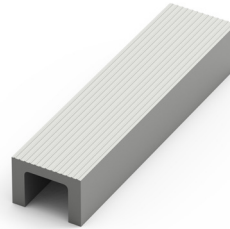
### > For recessed installations: Gateway 10 Plus

R frame (H: 10mm)



You'll need these to secure the matting on the left-to-right edges. Supplied in sections of 3m (10') length with fixing screws and plugs. Comes in anodized aluminum, powder coated dark grey and black. Size: 10mm x 12mm (3/8" x 15/32")

U section (H: 10mm)



If the front-to-back dimension of the mat well is greater than the final width of your matting, you may need a U section to secure the different sections together. Supplied in sections of 3m (10') length, with fixing screws and plugs. Comes in anodized aluminum, powder coated dark grey and black. Size: 10mm x 18mm (3/8" x 11/16")

H section (H: 10mm)



If the front-to-back dimension of the mat well is greater than the final width of your matting, you may need a H section to secure the different sections together. Supplied in sections of 3m (10') length, with fixing screws and plugs. Comes in black, with mat insert colour specified. Size: 10mm x 13mm (3/8" x 1/2")

Z frame (H: 10mm)



Installing matting next to ceramic tiles? You'll need a Z frame to secure the matting. Supplied in sections of 3.6m (11') length with fixing screws and plugs. Comes in anodized aluminum, powder coated dark grey and black. Size: 10mm x 24mm (3/8" x 15/16")