

Gateway XT (Frontrunner XT)

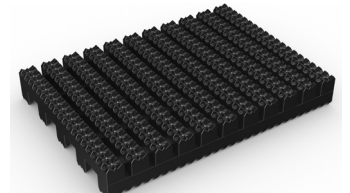


Extra slip-resistant entrance matting perfect for high traffic exterior and interior areas.



Gateway XT is a heavy-duty entrance mat designed to combat substantial amounts of dirt and large debris.

Its deep-etched tread scrapes shoes and wheels clean, while the open grid traps and collects the debris, preventing it from coming inside. This extra slip resistant mat is ideal for walkways like hardwood decking and bridges that tend to get slippery in wet weather. You can use Gateway XT inside and outside, or combine with entrance matting specifically designed for high traffic inside areas, like Gateway Plus.



Features:



Diamond cut pattern



Two layer open-grid construction



Close mesh grid



Made from flexible PVC



Comes in 10m (33') rolls



Benefits:



Certified slip resistant (DIN 51130: R12)



Excellent drainage (DIN 51130: V10)



Wheel-and-heel proof



Easy to cut on site, contours to uneven surfaces



Seamless installation



Plastex Matting Inc.

120 55th St NE
Fort Payne, AL 35967
+1 256 845 7725

USA + UK manufactured matting products:
plastexmatting.com

Data sheet

Standard sizes:

Product	Gateway I4 XT	Gateway I0 XT
Height	14mm (9/16")	10.5mm (13/32")
Standard roll options	10 x 0.6m (33' x 2')	10 x 0.6m (33' x 2')
	10 x 0.91m (33' x 3')	10 x 0.91m (33' x 3')
	5 x 1.2m (16'6" x 4')	5 x 1.2m (16'6" x 4')
Weight	10.5kg/m ² (2lbs/sq.ft)	8.7kg/m ² (1.8lbs/sq.ft)

Tolerances:

	Height (+/- 0.5mm)	Length (0+0.3mm)	Width (0+2mm)	
Gateway I4 XT	14 mm	10 m	60 cm	91 cm
	14 mm	5 m	120 cm	
Gateway I0 XT	10.5 mm	10 m	60 cm	91 cm
	10.5 mm	5 m	120 cm	

All dimensions are nominal

Technical information:

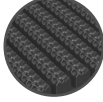
Acoustic	Excellent sound absorption
Chemical	Resistant to most acids, alkalines and oils. You can read more about specific chemical resistances by downloading this information sheet
Composition	Flexible Polyvinyl Chloride (PVC)
Environment	Gateway XT is 100% recyclable. We don't use any substances included in the SVHC list under REACH in any of our matting products.
Fire	EN ISO 13501-1:2007-Bfl-S1, ASTM E648, Class I
Reversion	Thermoplastic shrinkage can result in size reductions up to 2%. This may be accelerated in hot environments. You can read more about the causes of shrinkage by downloading this information sheet .
Slip resistance	ASTM E303 Dry/Wet with lines along-lines across 77-94 / 58-71 DIN 51130: R12, V10 (Gateway I4 XT) DIN 51130: R11, V10 (Gateway I0 XT)
Thermal	Designed to function at temperatures from -23°C and up to +60°C. Slight size variation may occur at temperature extremes.
UV light	Resistant to PVC degradation

Data sheet

Colours:



Black



Dark grey



Oxford blue

More colours
available
upon request

Installation:

Gateway XT's one-piece construction means installation is simple:

- No special tools or previous site visits
- Integrates with all internal floor coverings
- Fits with different well depths
- Contours to the floor

[Watch](#) or download the [recessed entrance matting installation instructions](#) and the [surface-mounted installation instructions](#)

Cleaning:

Keeping Gateway XT looking good is easy:

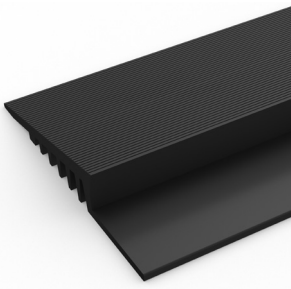
- Reduces cleaning intervals
- Simply roll or lift to clean
- No special tools needed
- Easy to vacuum or clean with a pressure hose

[Watch](#) or [download](#) the the cleaning instructions.

Ancillaries:

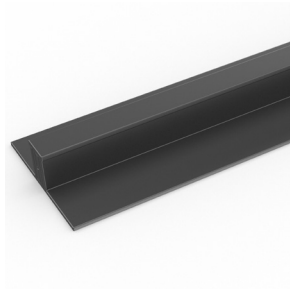
> For surface mounted installations: Gateway I4

PVC edging (H: 14mm, W: 60mm)



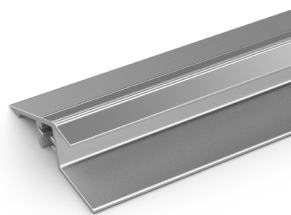
Supplied in rolls of 10.1m (33') length. One tube of cold welding paste recommended for every 10m of edging. Comes in black, dark grey, dark brown, holly green, Oxford blue, yellow. Size: 14mm x 60mm x 10.1m (9/16" x 2 1/2" x 33')

PVC snap track (H: 14mm)



Two-part snap track that can be welded together to join rolls end-to-end or side-to-side to cover large areas. We recommend one tube of cold welding paste for every 10m of edging. Comes in black and dark grey. Size: 14mm x 2.5m (9/16" x 8'2").

Aluminum edging (H: 15mm)



Supplied in sections of 2m (6'6") length with fixing screws and plugs. Comes in anodized aluminum and powder coated yellow. Size: 15mm x 45mm x 2m (9/16" x 1 13/16" x 6'6")

Connector clips: side-to-side (H: 14mm)



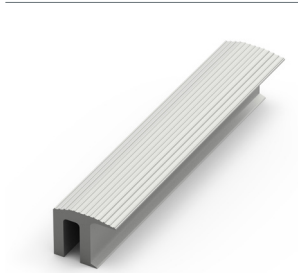
For joining sections of Gateway I4 matting together side-to-side. Supplied in packs of 10

Data sheet

Ancillaries:

> For recessed installations: Gateway I4

R frame (H: 14mm)



You'll need these to secure the matting on the left-to-right edges. Supplied in sections of 3m (10') length with fixing screws and plugs. Comes in anodized aluminum, powder coated dark grey and black. Size: 14mm x 12mm (9/16" x 15/32")

J frame (H: 18mm)



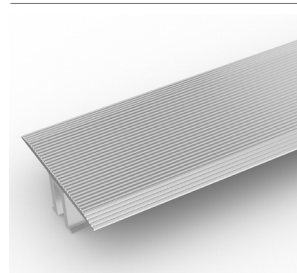
Installing Gateway against a wall? You'll need a J frame to secure the matting on the left-to-right edges. Supplied in sections of 3m (10') length with fixing screws and plugs. Comes in dark grey and black. Size: 18mm x 60mm (11/16" x 2 3/8")

T frame (H: 14mm)



You can use a T frame (27mm) to divide the matting into sections left-to-right – this makes it easier to lift and clean. Supplied in sections of 3m (10') length with fixing screws and plugs. Comes in anodized aluminum, powder coated dark grey and black

TL frame (H: 14mm)



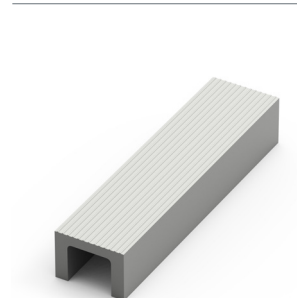
You can use a T/L frame (55mm) to divide the matting into sections left-to-right – this makes it easier to lift and clean. Supplied in sections of 3m (10') length with fixing screws and plugs. Comes in anodized aluminum

H section (H: 14mm)



If the front-to-back dimension of the mat well is greater than the final width of your matting, you may need a H section to secure the different sections together. Supplied in sections of 3m (10') length, with fixing screws and plugs. Comes in black, with mat insert colour specified. Size: 14mm x 13mm (9/16 x 1/2")

U section (H: 14mm)



If the front-to-back dimension of the mat well is greater than the final width of your matting, you may need a U section to secure the different sections together. Supplied in sections of 3m (10') length, with fixing screws and plugs. Comes in anodized aluminum, powder coated dark grey and black. Size: 14mm x 19mm (9/16" x 3/4")

L frame (H: 15mm)



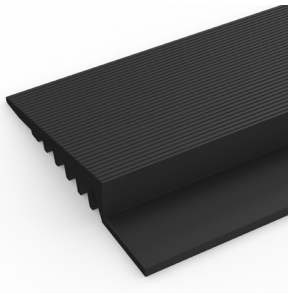
Installing around a circular door or non rectangular space? You'll need a L frame to secure the matting. Size: 15mm x 2.7m length (5/8" x 8')

Data sheet

Ancillaries:

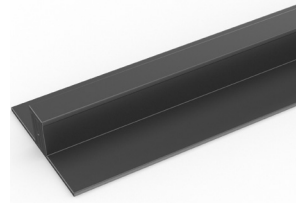
> For surface mounted installations: Gateway 10

PVC edging (H: 10mm, W: 50mm)



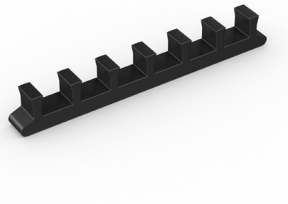
Supplied in rolls of 10.1m (33') length. One tube of cold welding paste recommended for every 10m of edging. Comes in black and dark grey. Size: 10mm x 50mm x 10.1m (3/8" x 2" x 33')

PVC snap track (H: 10.5mm)



Two-part snap track that can be welded together to join rolls end-to-end or side-to-side to cover large areas. We recommend one tube of cold welding paste for every 10m of edging. Comes in dark grey. Size: 10.5mm x 2.5m (13/32" x 8'2")

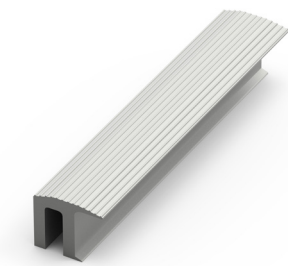
Connector clips: side-to-side (H: 10mm)



For joining sections of Gateway 10 matting together side-to-side. Supplied in packs of 10

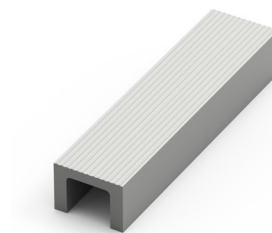
> For recessed installations: Gateway 10

R frame (H: 10mm)



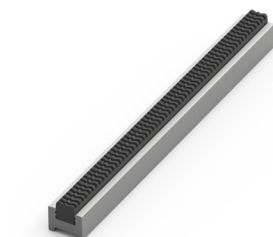
You'll need these to secure the matting on the left-to-right edges. Supplied in sections of 3m (10') length with fixing screws and plugs. Comes in anodized aluminum, powder coated dark grey and black. Size: 10mm x 12mm (3/8" x 15/32")

U section (H: 10mm)



If the front-to-back dimension of the mat well is greater than the final width of your matting, you may need a U section to secure the different sections together. Supplied in sections of 3m (10') length, with fixing screws and plugs. Comes in anodized aluminum, powder coated dark grey and black. Size: 10mm x 18mm (3/8" x 11/16")

H section (H: 10mm)



If the front-to-back dimension of the mat well is greater than the final width of your matting, you may need a H section to secure the different sections together. Supplied in sections of 3m (10') length, with fixing screws and plugs. Comes in black, with mat insert colour specified. Size: 10mm x 13mm (3/8" x 1/2")

Z frame (H: 10mm)



Installing matting next to ceramic tiles? You'll need a Z frame to secure the matting. Supplied in sections of 3.6m (11') length with fixing screws and plugs. Comes in anodized aluminum, powder coated dark grey and black. Size: 10mm x 24mm (3/8" x 15/16")