

Gateway Brush Wide (Frontrunner Brush Wide)

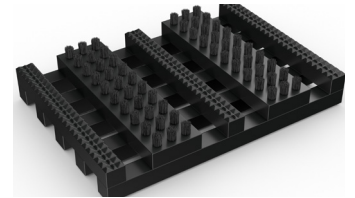


Extra wide external matting with brush inserts designed for trapping large debris.



Large debris is no match for Gateway Brush Wide, a hard-wearing entrance mat specifically designed to trap stones, snow, ice and shingle.

Heavy-duty brush strips with bristles scrape shoes clean, while the extra wide open grid traps and collects the large debris, preventing it from being walked inside. Gateway Brush Wide works either as a standalone entrance mat, or can be interchanged with another Gateway system, like Gateway Brush or Gateway XT, in the summer months.



Features:



Diamond-cut pattern



Two layer open-grid construction



Nylon brush inserts



Comes in 10m (33') rolls or modules



Made from flexible PVC



Benefits:



Slip resistant, high soil removal



Excellent drainage



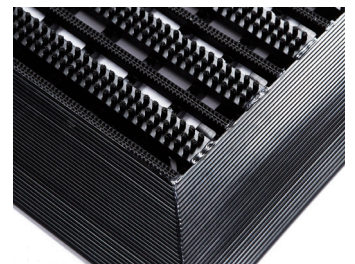
Scrapes shoes clean



Seamless installation



Easy to cut to fit on site, contours to uneven surfaces



Plastex Matting Inc.

120 55th St NE
Fort Payne, AL 35967
+1 256 845 7725

USA + UK manufactured matting products:
plastexmatting.com

Data sheet

Standard sizes:

Product	Gateway Brush Wide
Height	14 - 19mm (9/16" - 3/4")
Standard roll options	10 x 0.6m (33' x 2')
	10 x 0.91m (33' x 3')
	5 x 1.2m (16'6" x 4')
Standard module options	0.8 x 1.2m (2'7" x 4')
	1 x 1.5m (3'3" x 4'11")
	1.1 x 2m (3'7" x 6'7")
Weight	7.8 kg/m ² (1.6 lb/sq.ft)

Surface modules are supplied with factory fitted PVC ramped edging to four sides.

Tolerances:

	Height (+/- 0.5mm)	Length (0+0.3mm)	Width (0+2mm)	
Gateway Brush Wide	14/19 mm	10 m	60 cm	91 cm
	14/19 mm	5 m	120 cm	

All dimensions are nominal

PVC grid technical information:

Acoustic	Excellent sound absorption
Chemical	Resistant to most acids, alkalines and oils. You can read more about specific chemical resistances by downloading this information sheet
Composition	Flexible Polyvinyl Chloride (PVC)
Environment	We don't use any substances included in the SVHC list under REACH in any of our matting products.
Fire	Nylon brush fibres: UL94 - V2
Reversion	Thermoplastic shrinkage can result in size reductions up to 2%. This may be accelerated in hot environments. You can read more about the causes of shrinkage by downloading this information sheet .
Thermal	Designed to function at temperatures from -23°C and up to +60°C. Slight size variation may occur at temperature extremes.
UV light	Resistant to PVC degradation
Warranty	Two years. Visit our policies page for more information about warranties

Nylon brush inserts technical information:

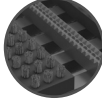
Construction	Aligned tufting
Bristle diameter	0.3mm
Insert thickness	12mm
Bristle content	Nylon 6.6 monofilaments
Bristle height	4.5mm
Backing	PVC

Data sheet

Colours:



Black



Dark grey

More colours
available
upon request

Installation:

Gateway Brush Wide's one-piece construction means installation is simple:

- No special tools or previous site visits
- Fits with different well depths
- Contours to the floor

[Watch](#) or download the [recessed entrance matting installation instructions](#) and the [surface-mounted installation instructions](#).

Cleaning:

Keeping Gateway Brush Wide looking good is easy:

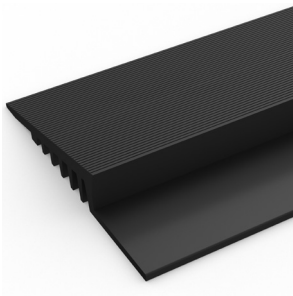
- Reduces cleaning intervals
- Simply roll or lift to clean
- No special tools needed
- Easy to clean using a vacuum, plus a coarse brush for clearing the debris in the grid

[Watch](#) or [download](#) the the cleaning instructions.

Ancillaries:

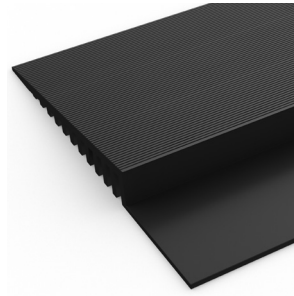
> For surface mounted installations

PVC edging (H: 14mm, W: 60mm)



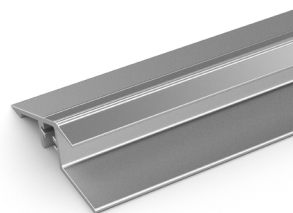
Supplied in rolls of 10.1m (33') length. One tube of cold welding paste recommended for every 10m of edging. Comes in black, dark grey, dark brown, holly green, Oxford blue, yellow. Size: 14mm x 60mm x 10.1m (9/16" x 2 1/2" x 33')

PVC edging (H: 14mm, W: 100mm)



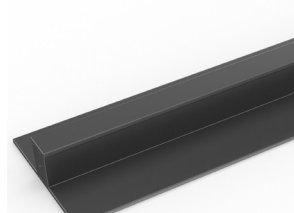
Supplied in rolls of 10.1m (33') length. One tube of cold welding paste recommended for every 10m of edging. Comes in black, dark grey and yellow. Size: 14mm x 100mm x 10.1m (9/16" x 3 3/4" x 33')

Aluminum edging (H: 15mm)



Supplied in sections of 2m (6'6") length with fixing screws and plugs. Comes in anodized aluminum and powder coated yellow. Size: 15mm x 45mm x 2m (9/16" x 1 13/16" x 6'6")

PVC snap track (H: 14mm)



Two-part snap track that can be welded together to join rolls end-to-end or side-to-side to cover large areas. We recommend one tube of cold welding paste for every 10m of edging. Comes in black and dark grey. Size: 14mm x 2.5m (9/16" x 8'2").

Data sheet

Ancillaries:

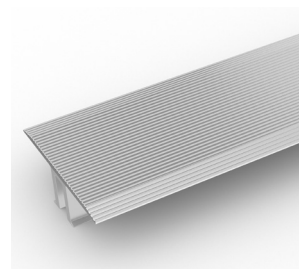
> For recessed installations

T frame (H: 14mm)



You can use a T frame (27mm) to divide the matting into sections left-to-right – this makes it easier to lift and clean. Supplied in sections of 3m (10') length with fixing screws and plugs. Comes in anodized aluminum, powder coated dark grey and black

TL frame (H: 14mm)



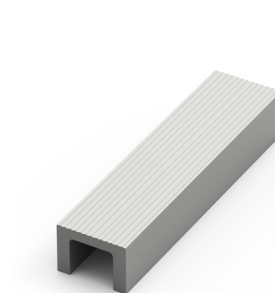
You can use a T/L frame (55mm) to divide the matting into sections left-to-right – this makes it easier to lift and clean. Supplied in sections of 3m (10') length with fixing screws and plugs. Comes in anodized aluminum

H section (H: 14mm)



If the front-to-back dimension of the mat well is greater than the final width of your matting, you may need a H section to secure the different sections together. Supplied in sections of 3m (10') length, with fixing screws and plugs. Comes in black, with mat insert colour specified. Size: 14mm x 13mm (9/16 x 1/2")

U section (H: 14mm)



If the front-to-back dimension of the mat well is greater than the final width of your matting, you may need a U section to secure the different sections together. Supplied in sections of 3m (10') length, with fixing screws and plugs. Comes in anodized aluminum, powder coated dark grey and black. Size: 14mm x 19mm (9/16" x 3/4")

L frame (H: 15mm)



Installing around a circular door or non rectangular space? You'll need a L frame to secure the matting. Size: 15mm x 2.7m length (5/8" x 8')