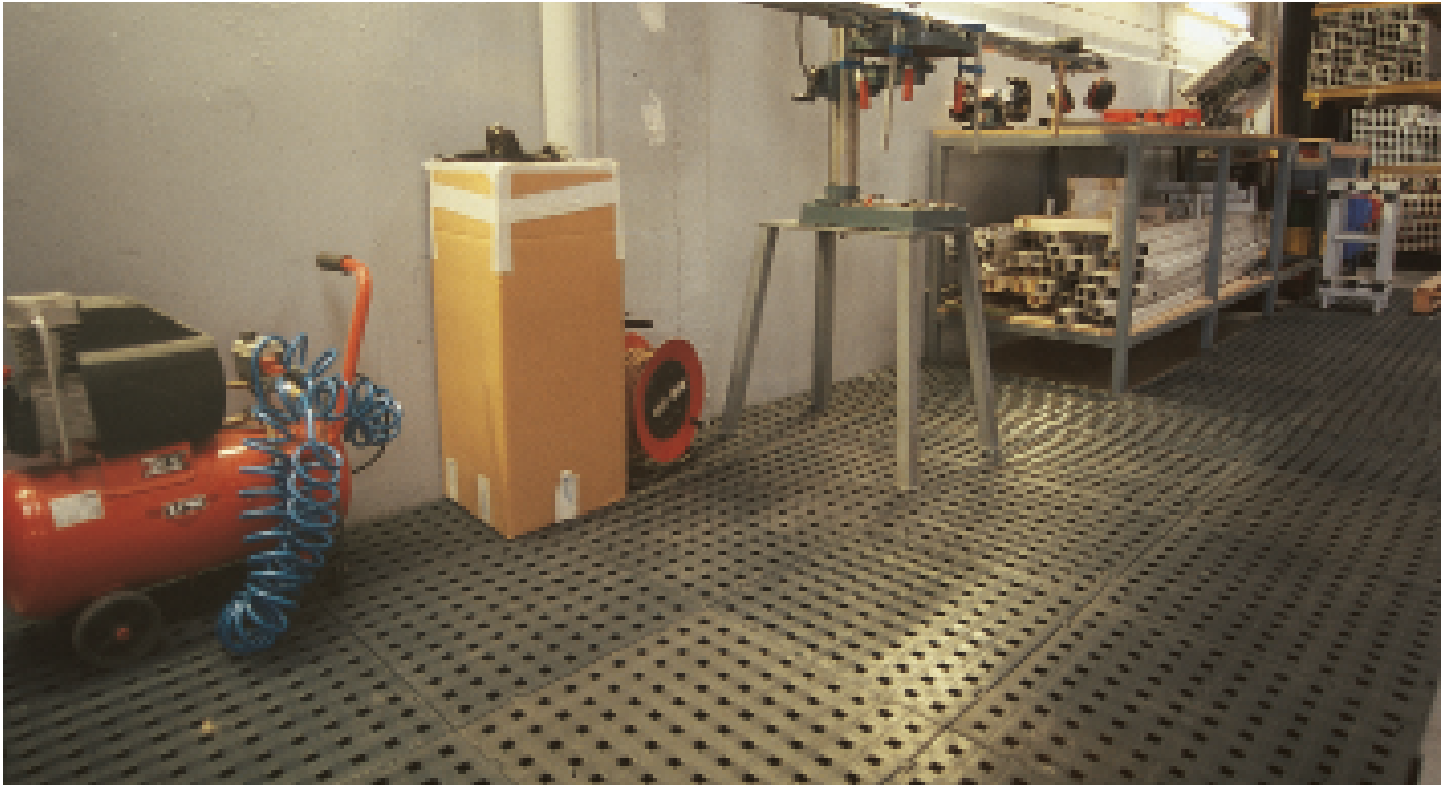


Plastex Grid

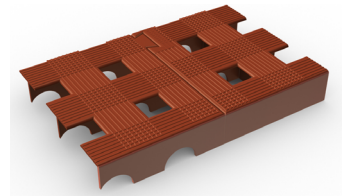


Heavy-duty open-grid tiling that interlocks together to create raised work surfaces.



With its open-grid design and easy 'lock-fit' connection, Plastex Grid is ideal for covering large areas in industrial workplaces.

The tiles' heavy-duty open grid can withstand weights up to 50t/m² and provides excellent drainage, making it the perfect tiling system for industrial workplaces where detergents, industrial chemicals and acids are likely to be spilled. Sitting at a raised height of 25mm, the tiles easily lock into place, creating an elevated work surface that's flexible yet hard wearing.



Features:



25mm raised surface



Open-grid



Textured design



Made from rigid polyethylene



Secure 'lock fit' connection



Benefits:



Surface protection; reduces fatigue



Removes large quantities of liquids



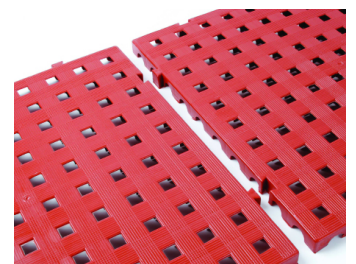
Provides good slip resistance



Withstands weights up to 50T/m²



Easy to install, can be moved around as needed



Plastic Extruders Ltd.

Russell Gardens, Wickford
Essex, SS11 8DN
+44 (0) 1268 571 116

UK + USA manufactured
matting products:
plastexmatting.com





Standard sizes:

Product	Plastex Grid
Height	25mm (1")
Standard tile options	50 x 50cm (1'8" x 1'8")
Weight	3.3kg/m ² (0.7lb/sq.ft)

Tolerances:

	Height (+/- 0.5mm)	Dimensions (+/- 1cm)
Plastex Grid	25mm	50cm x 50cm

All dimensions are nominal

Technical information:

Chemical	Resistant to most acids, alkalines and oils. You can read more about specific chemical resistances by downloading this information sheet .
Composition	Made from linear low density polyethylene (LLDPE).
Hygiene	Made from non-porous 100% LLDPE (linear low-density polyethylene), which inhibits the growth of bacteria.
Thermal	Designed to function at temperatures from -23°C and up to +60°C. Slight size variation may occur at temperature extremes.
Warranty	Two years. Visit our policies page for more information about warranties

Installation:

Plastex Grid's 'lock fit' connection means installation is simple:

- The tiles easily and securely lock into place
- Creates a raised 25mm work surface
- Effectively covers large areas
- No special tools or previous site visits needed for installation

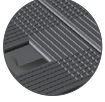
[Download the full installation instructions here.](#)

Cleaning:

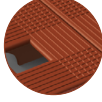
Keeping Plastex Grid looking good is easy:

- Light to handle
- Simply lift to clean
- Easy to clean with a high pressure hose

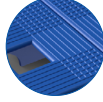
Colours:



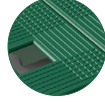
Dark grey



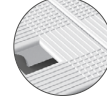
Red



Blue



Green



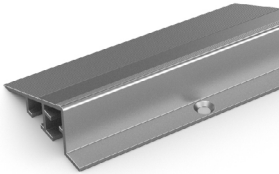
White

More colours
available
upon request

Ancillaries:

> Plastex Grid

Aluminum edging (H: 25mm)



Supplied in sections of 2m (6'6") length with fixing screws and plugs. Comes in anodised aluminum. Size: 25mm x 66mm x 2m (1" x 2 3/4" x 6'6")