

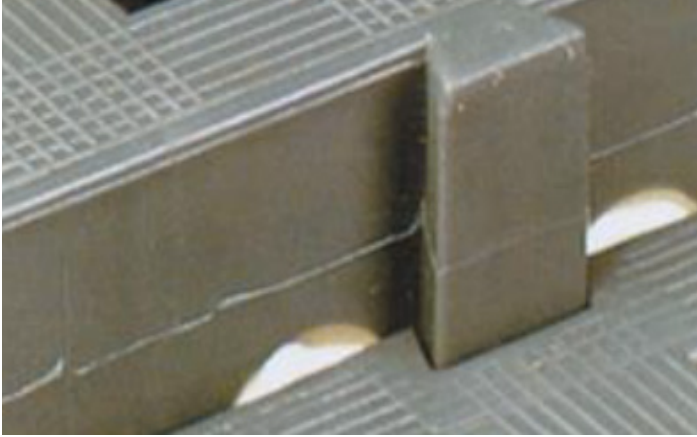
Plastex Grid

Installation instructions

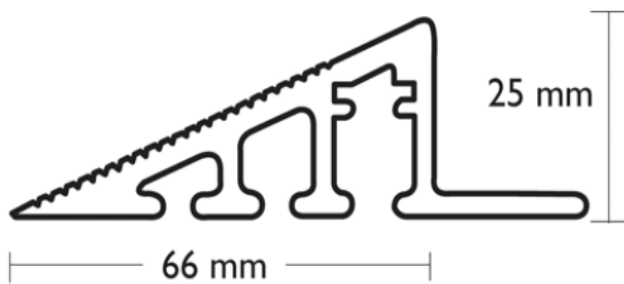


Open or solid tiles

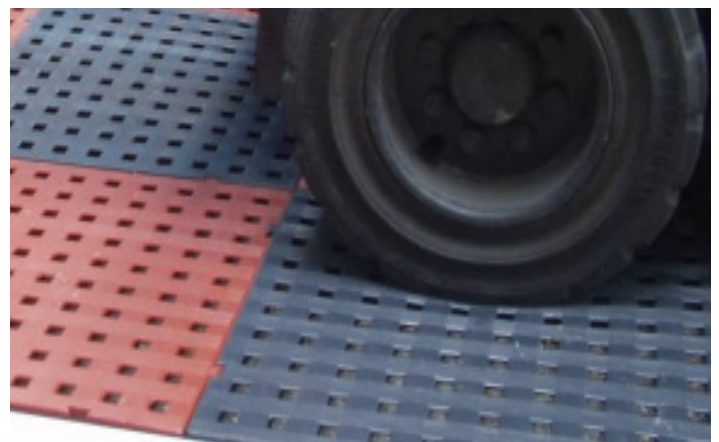
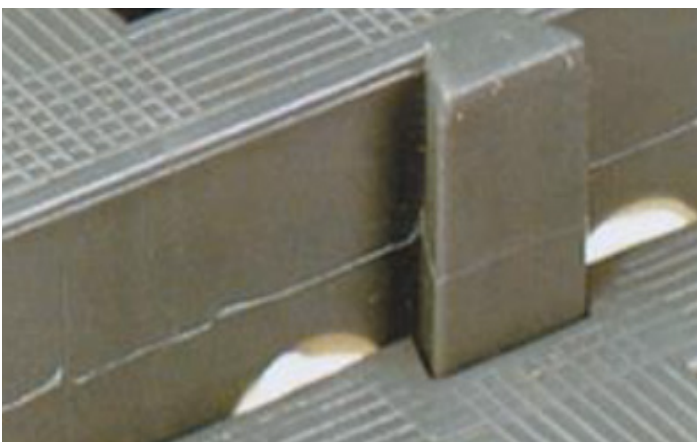
- 1) Plastex Grid is an interlocking tile, so simply slot the connection tag in the groove.



- 2) If you use the aluminum ramp, screw the ramp down to the floor with the screws provided:



- 3) When the aluminum ramp meets the side of the tile, the extra tag can be removed by simply cutting it.



Note: the pictures shown in this guide are for illustrative purposes only.

Plastex Matting Inc.

120 55th St NE
Fort Payne, AL 35967
+1 256 845 7725

USA + UK manufactured
matting products:
plastexmatting.com