

Open-grid, interlocking PVC tiles designed for busy industrial workplaces where spillages are likely.



A hard-wearing tiling system that's certified slip resistant and made from 100% recycled material, Plastex Lok is ideal for busy industrial workplaces where spillages are frequent.

Its dimpled surface provides the highest level of slip resistance, while the non-porous PVC naturally resists chemicals, oils and acids. Ramped edges and a raised construction make it the perfect matting for work stations, assembly areas, laboratories and storage areas where spillages happen frequently and drainage is needed.



## Features:



Dimpled surface



Raised construction



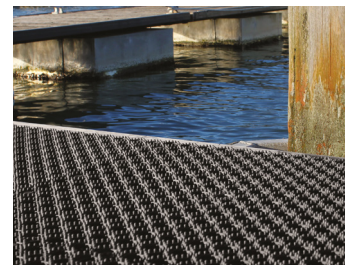
Made from non-porous PVC



Interlocking tiles with ramped edging



Made from 100% recycled material



## Benefits:



Certified slip resistant (DIN 51130:R12)



Excellent drainage (DIN 51130:V10)



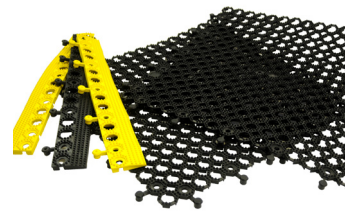
Resistant to chemicals, acids, oils



Seamless installation



Environmentally friendly



## Plastic Extruders Ltd.

Russell Gardens, Wickford  
Essex, SS11 8DN  
+44 (0) 1268 571 116

UK + USA manufactured matting products:  
[plastexmatting.com](http://plastexmatting.com)



### Standard sizes:

<b>Product</b>	Plastex Lok
<b>Height</b>	16mm (5/8")
<b>Standard tile size</b>	0.5m x 0.5m (1'8" x 1'8")
<b>Weight</b>	4.8kg/m <sup>2</sup> (1.10lb/sq.ft)

### Tolerances:

	Height (+/- 0.5mm)	Standard tile size (+/- 1cm)
Plastex Lok	16mm	50cm x 50cm

All dimensions are nominal

### Technical information:

<b>Acoustic</b>	Excellent sound absorption
<b>Chemical</b>	Resistant to most acids, alkalines and oils. You can read more about specific chemical resistances by downloading this <a href="#">information sheet</a> .
<b>Composition</b>	Flexible Polyvinyl Chloride (PVC).
<b>Environment</b>	Plastex Lok is 100% recyclable and made from 100% post-industrial recycled PVC. We don't use any substances included in the SVHC list under REACH in any of our tiling products.
<b>Reversion</b>	Thermoplastic shrinkage can result in size reductions up to 2%. This may be accelerated in hot environments. You can read more about the causes of shrinkage by <a href="#">downloading this information sheet</a> .
<b>Thermal</b>	Designed to function at temperatures from -23°C and up to +60°C. Slight size variation may occur at temperature extremes.
<b>UV light</b>	Resistant to PVC degradation
<b>Warranty</b>	Two years. Visit our <a href="#">policies page</a> for more information about warranties

### Installation:

Plastex Lok's interlocking system means installation is simple:

- Tiles easily and securely lock into place
- Effectively covers large areas
- No special tools needed

[Download the full installation instructions](#)

### Cleaning:

Keeping Plastex Lok looking good is easy:

- Light to handle
- Simply lift to clean
- Easy to clean with a high pressure hose

### Colours:



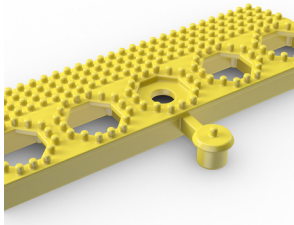
Black

More colours  
available  
upon request

### Ancillaries:

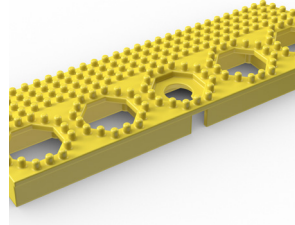
#### > Plastex Lok

##### Plastex Lok edging (male)



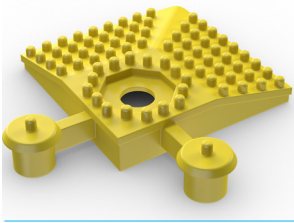
Supplied in 50cm (1'8") lengths. Both male and female strips are available. Comes in black and yellow. Size: 12mm x 50mm x 50cm (1/2" x 2" x 1'8")

##### Plastex Lok edging (female)



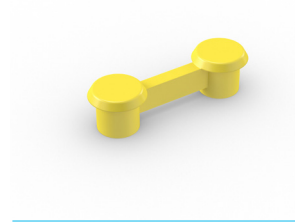
Supplied in 50cm (1'8") lengths. Both male and female strips are available. Comes in black and yellow. Size: 12mm x 50mm x 50cm (1/2" x 2" x 1'8")

##### Plastex Lok ramped corner



Comes in black and yellow. Size: 12mm x 50mm x 50mm (1/2" x 2" x 2")

##### Plastex Lok edging connector clips



For joining two ends of the edging together. One lug is supplied for every two pieces of edging in the relevant colour