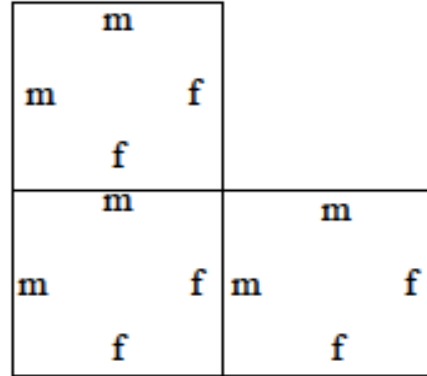
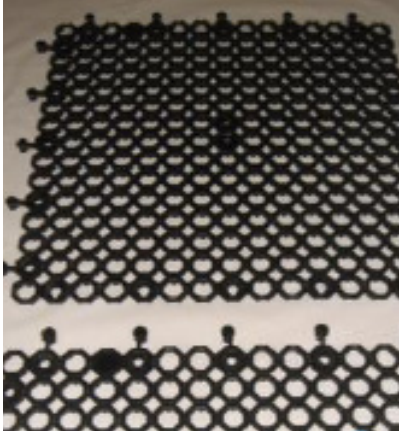


Installation instructions

JOINING THE TILES

- a) Position the tiles with the "finger" clips facing the same direction. "M" stands for male, with finger clips, "F" for female, with holes to fit finger clips.



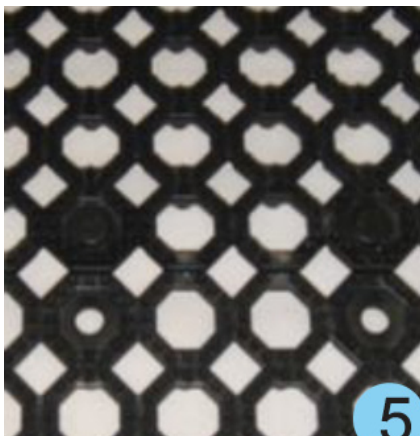
- b) Position the "finger" clips below each corresponding hole



- c) Using a rubber mallet, bang the top of all holes to join the tiles together



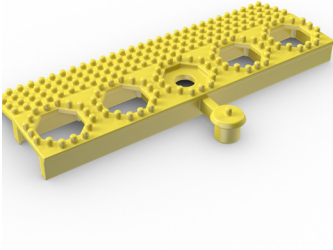
- b) Tiles joined with head of fingers showing through joining holes



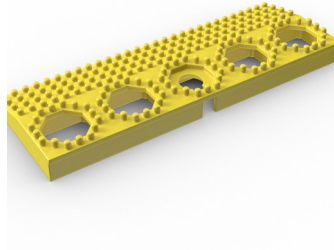
FITTING THE EDGINGS

- a) Familiarize yourself with the three kinds of edgings: male, female and corner

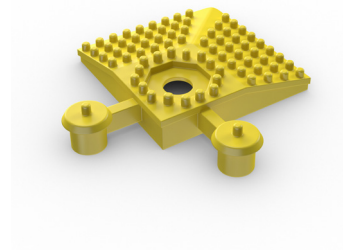
Male edging



Female edging

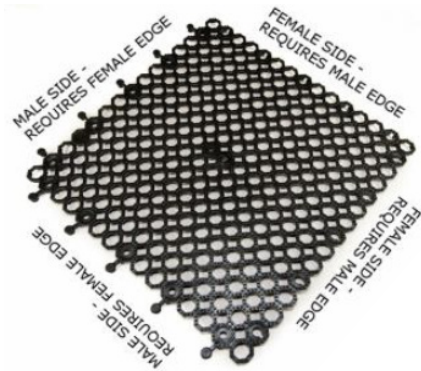


Corner



- b) Once the tiles are joined together, you need to know the type of edging required for each tile

- c) Position the finger clips of the male edgings below the corresponding hole of the tile and use a rubber mallet to join them to the tiles



- d) Position the holes of the female edgings above each corresponding finger clips of the tile and use a rubber mallet to join them to the tiles

- e) For external or internal corners, position the finger clips of the corner edging below the holes of the tiles and use a rubber mallet to join them to the tiles



Note: the pictures shown in this guide are for illustrative purposes only. Type of edgings may vary from diagram shown