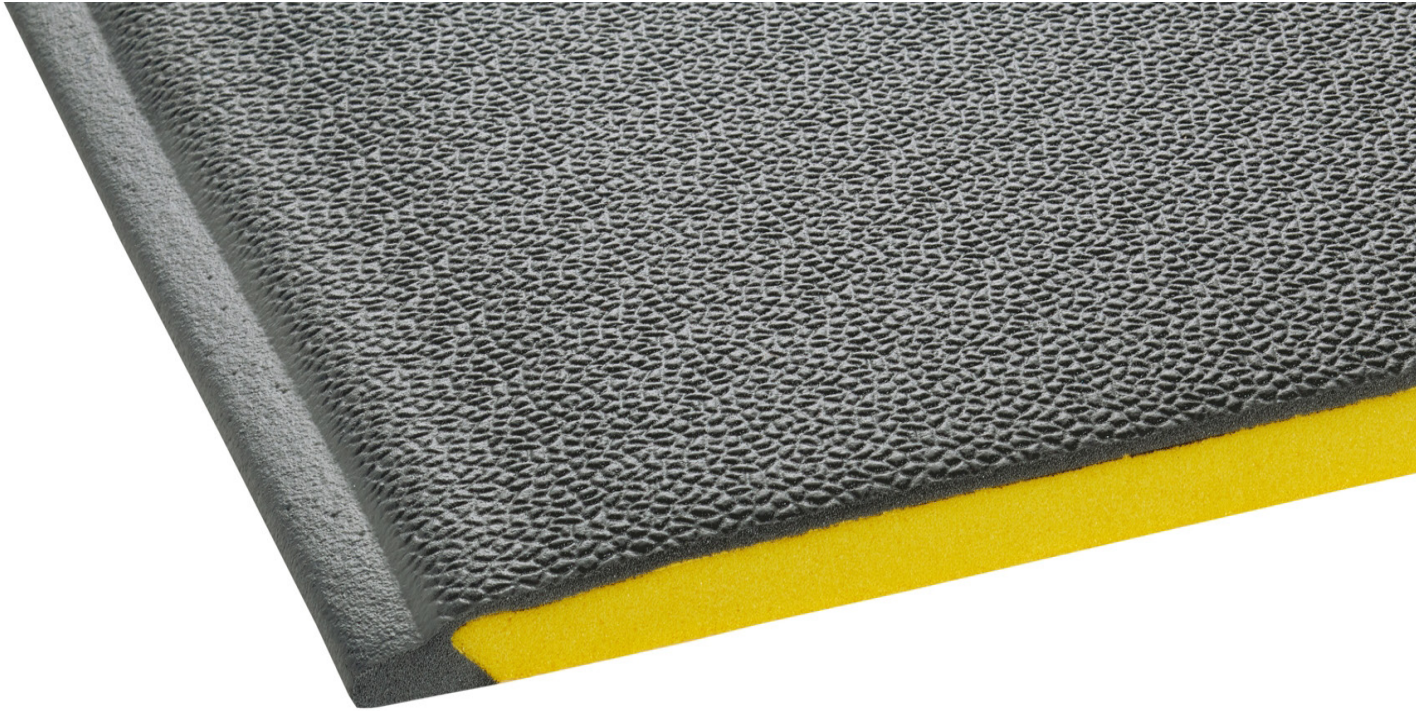


# Tuff Spun Wear

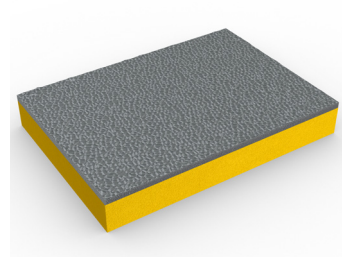


High-performance, anti-fatigue matting perfect for commercial and retail workplaces.



With its thick foam composition and heavy-duty top layer, Tuff Spun Wear is the ideal anti-fatigue matting for commercial and retail workplaces.

50% thicker than Tuff Spun, this ultra-cushioned matting provides extra comfort for standing employees, helping to reduce fatigue and boosting productivity.



## Features:



Heavy-duty top layer



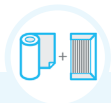
Embossed pebble surface



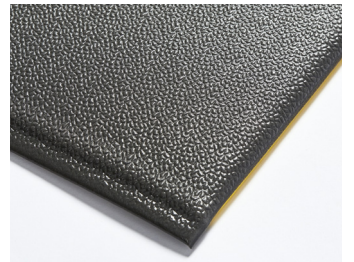
Increased foam thickness



Closed cell construction



Comes in 18m (60') rolls and standard modules



## Benefits:



Certified wear resistant (ASTM 4060: <0.3g loss)



Good slip resistance



Extra cushioning to improve comfort



Protects dropped items from damage



Quick to install



## Plastex Matting Inc.

120 55th St NE  
Fort Payne, AL 35967  
+1 256 845 7725

USA + UK manufactured matting products:  
[plastexmatting.com](http://plastexmatting.com)

### Standard sizes:

| Product                 | Tuff Spun Wear                       |
|-------------------------|--------------------------------------|
| Height                  | 14mm (9/16")                         |
| Standard roll option    | 18 x 0.91m (60' x 3')                |
| Standard module options | 0.6 x 0.91m (2' x 3')                |
|                         | 0.91 x 1.5m (3' x 5')                |
|                         | 0.91 x 3m (3' x 10')                 |
| Weight                  | 4kg/m <sup>2</sup> (0.74 lbs/sq.ft.) |

Surface modules are supplied with factory fitted PVC ramped edging to four sides

### Tolerances:

|                | Height (+/- 0.5mm) | Lengths (0+0.3m) | Widths (+/- 1cm) |
|----------------|--------------------|------------------|------------------|
| Tuff Spun Wear | 14 mm              | 18 m             | 91 cm            |

All dimensions are nominal

### Technical information:

|             |   |
|-------------|---|
| Acoustic    | Excellent sound absorption  |
| Composition | Vinyl foam/vinyl wear layer.  |
| Thermal     | Designed to function at temperatures from -23°C and up to +60°C. Slight size variation may occur at temperature extremes. |
| Wear rating | ASTM 4060: <0.3g loss.  |
| Warranty    | One year. Visit our <a href="#">policies page</a> for more information about warranties                                   |

### Installation:

Tuff Spun Wear's one-piece construction means installation is simple:

- Comes in rolls or modules for quick installation
- Easy to cut to size and shape
- No special tools needed

### Cleaning:

Keeping Tuff Spun Wear looking good is easy:

- Light to handle
- Simply lift or roll to clean
- Easy to clean and maintain

### Colours:



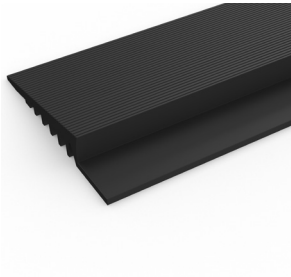
Dark grey

More colours  
available  
upon request

### Ancillaries:

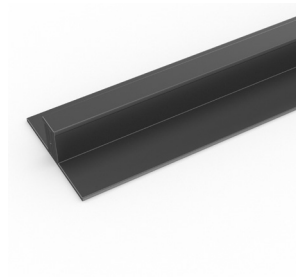
#### > Tuff Spun Wear

PVC edging (H: 10mm, W: 60mm)



Supplied in rolls of 10.1m (33') length. One tube of cold welding paste recommended for every 10m of edging. Comes in black and dark grey. Size: 10mm x 60mm x 10.1m (9/16" x 2 1/2" x 33')

PVC snap track (H: 10mm)



Two-part snap track that can be welded together to join rolls end-to-end or side-to-side to cover large areas. We recommend one tube of cold welding paste for every 10m of edging. Comes in dark grey. Size: 10.5mm x 2.5m (13/32" x 8'2")