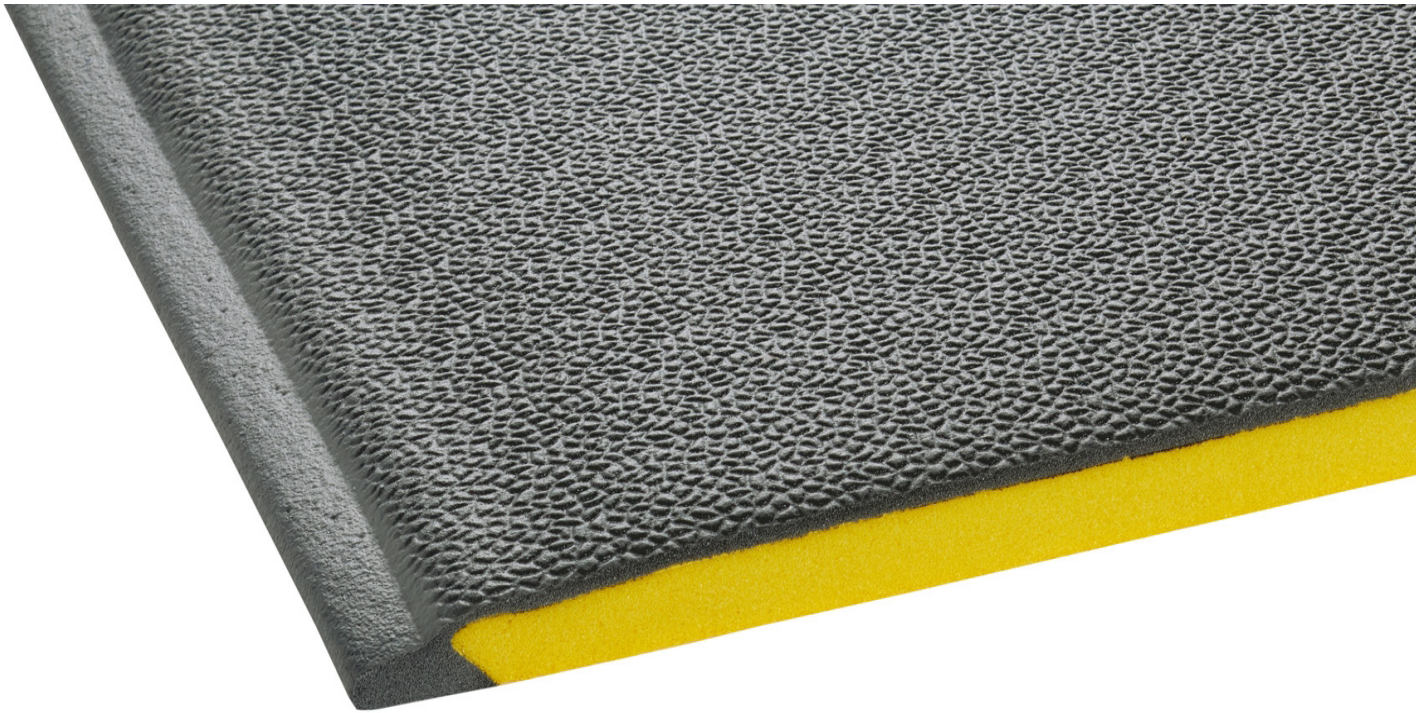


Tuff Spun Wear

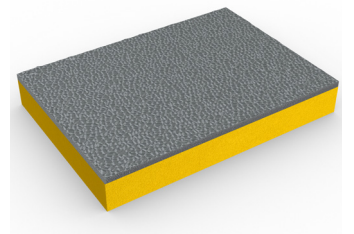


High-performance, anti-fatigue matting perfect for commercial and retail workplaces.



With its thick foam composition and heavy-duty top layer, Tuff Spun Wear is the ideal anti-fatigue matting for commercial and retail workplaces.

50% thicker than Tuff Spun, this ultra-cushioned matting provides extra comfort for standing employees, helping to reduce fatigue and boosting productivity.



Features:



Heavy-duty top layer



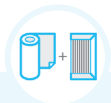
Embossed pebble surface



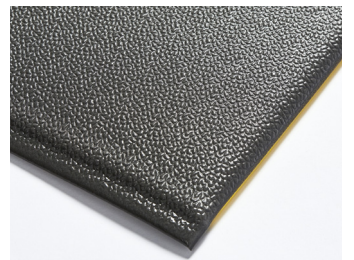
Increased foam thickness



Closed cell construction



Comes in 60' (18m) rolls and standard modules



Benefits:



Certified wear resistant (ASTM 4060: <0.3g loss)



Good slip resistance



Extra cushioning to improve comfort



Protects dropped items from damage



Quick to install



Plastex Matting Inc.

120 55th St NE
Fort Payne, AL 35967
+1 256 845 7725

USA + UK manufactured matting products:
plastexmatting.com

Tuff Spun Wear

Data sheet



Standard sizes:

Product	Tuff Spun Wear
Height	9/16" (14mm)
Standard roll option	60' x 3' (18 x 0.91m)
Standard module options	2' x 3' (0.6 x 0.91m)
	3' x 5' (0.91 x 1.5m)
	3' x 10' (0.91 x 3m)
Weight	0.74 lbs/sq.ft (4kg/m ²)

Surface modules are supplied with factory fitted PVC ramped edging to four sides

Tolerances:

	Height (+/- 0.05")	Lengths (0+1.0')	Widths (+/- 1/2")
Tuff Spun Wear	9/16"	60'	3'

All dimensions are nominal

Technical information:

Acoustic	Excellent sound absorption
Composition	Vinyl foam/vinyl wear layer.
Thermal	Designed to function at temperatures from -9°F and up to +140°F. Slight size variation may occur at temperature extremes.
Wear rating	ASTM 4060: <0.3g loss.
Warranty	One year. Visit our policies page for more information about warranties

Installation:

Tuff Spun Wear's one-piece construction means installation is simple:

- Comes in rolls or modules for quick installation
- Easy to cut to size and shape
- No special tools needed

Cleaning:

Keeping Tuff Spun Wear looking good is easy:

- Light to handle
- Simply lift or roll to clean
- Easy to clean and maintain

Colors:



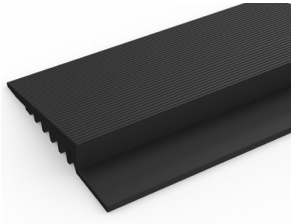
Dark gray

More colors
available
upon request

Ancillaries:

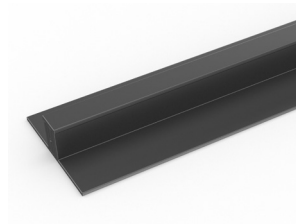
> Tuff Spun Wear

PVC edging (H: 9/16, W: 2 1/2")



Supplied in rolls of 33' (10.1m) length with cold welding paste. Comes in black, dark gray, dark brown, holly green, Oxford blue, yellow. Size: 9/16" x 2 1/2" x 33' (14mm x 60mm x 10.1m)

PVC snap track (H: 9/16")



Two-part snap track that can be welded together to join rolls end-to-end or side-to-side to cover large areas. Supplied with cold welding paste. Comes in dark gray. Size: 9/16" x 8'2" (14mm x 2.5m)