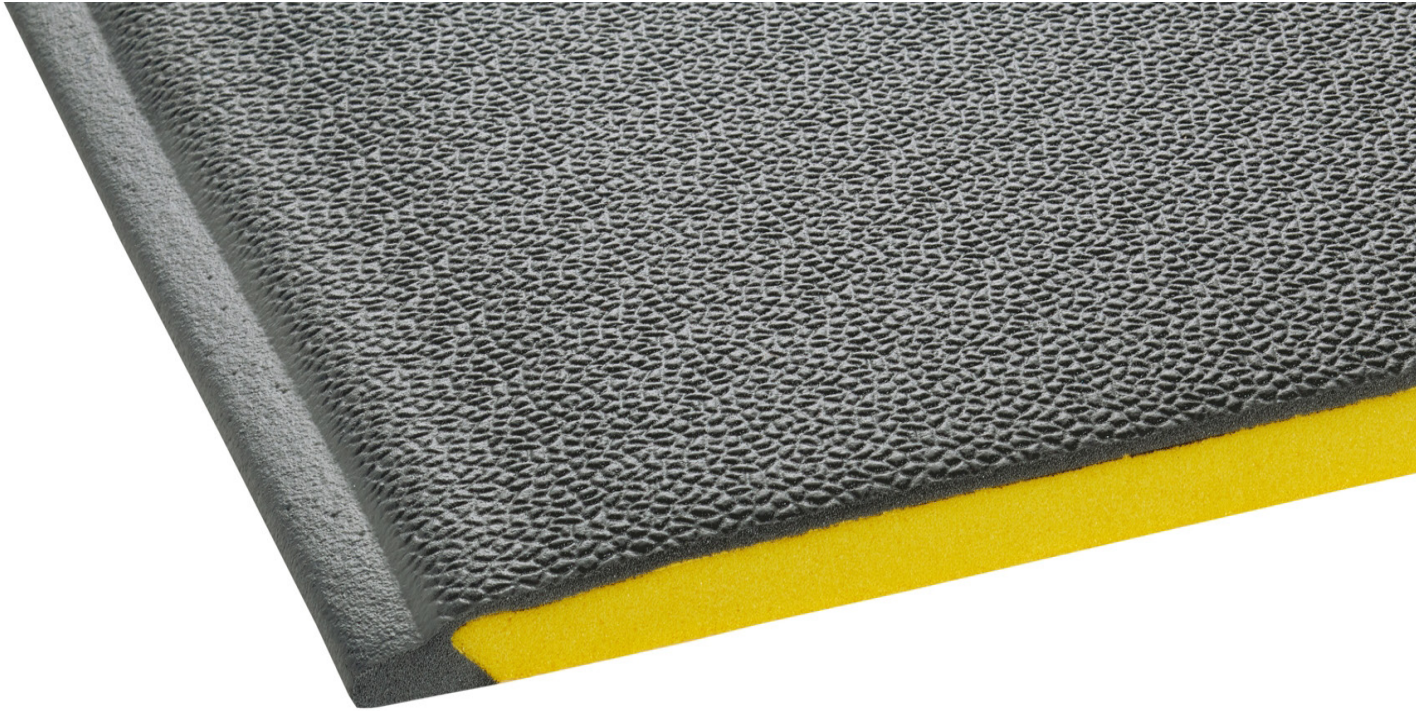


# Tuff Spun Wear

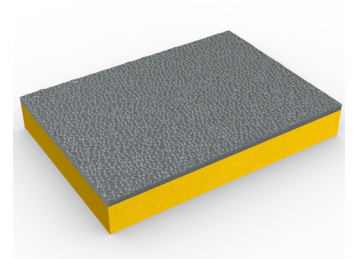


High-performance, anti-fatigue matting perfect for commercial and retail workplaces.



With its thick foam composition and heavy-duty top layer, Tuff Spun Wear is the ideal anti-fatigue matting for commercial and retail workplaces.

50% thicker than Tuff Spun, this ultra-cushioned matting provides extra comfort for standing employees, helping to reduce fatigue and boosting productivity.



## Features:



Heavy-duty top layer



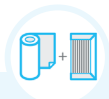
Embossed pebble surface



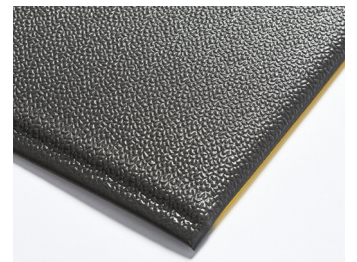
Increased foam thickness



Closed cell construction



Comes in 18m (60') rolls and standard modules



## Benefits:



Certified wear resistant (ASTM 4060: <0.3g loss)



Good slip resistance



Extra cushioning to improve comfort



Protects dropped items from damage



Quick to install



## Plastic Extruders Ltd.

Russell Gardens, Wickford  
Essex, SS11 8DN  
+44 (0) 1268 571 116

UK + USA manufactured  
matting products:  
[plastexmatting.com](http://plastexmatting.com)



### Standard sizes:

Product	Tuff Spun Wear
Height	14mm (9/16")
Standard roll option	18 × 0.91m (60' × 3')
Standard module options	0.6 × 0.91m (2' × 3')
	0.91 × 1.5m (3' × 5')
	0.91 × 3m (3' × 10')
Weight	4kg/m <sup>2</sup> (0.74 lbs/sq.ft.)

Surface modules are supplied with factory fitted PVC ramped edging to four sides

### Tolerances:

	Height (+/- 0.5mm)	Lengths (0+0.3m)	Widths (+/- 1cm)
Tuff Spun Wear	14 mm	18 m	91 cm

All dimensions are nominal

### Technical information:

Acoustic	Excellent sound absorption
Composition	Vinyl foam/vinyl wear layer.
Thermal	Designed to function at temperatures from -23°C and up to +60°C. Slight size variation may occur at temperature extremes.
Wear rating	ASTM 4060: <0.3g loss.
Warranty	One year. Visit our <a href="#">policies page</a> for more information about warranties

### Installation:

Tuff Spun Wear's one-piece construction means installation is simple:

- Comes in rolls or modules for quick installation
- Easy to cut to size and shape
- No special tools needed

### Cleaning:

Keeping Tuff Spun Wear looking good is easy:

- Light to handle
- Simply lift or roll to clean
- Easy to clean and maintain

### Colours:



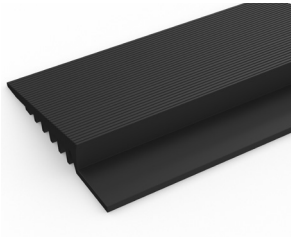
Dark grey

More colours  
available  
upon request

### Ancillaries:

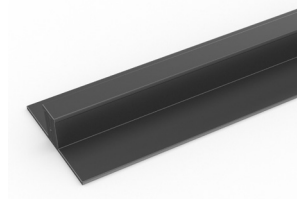
#### > Tuff Spun Wear

PVC edging (H: 10mm, W: 60mm)



Supplied in rolls of 10.1m (33') length with cold welding paste. Comes in black and dark grey. Size: 10mm x 60mm x 10.1m (9/16" x 2 1/2" x 33')

PVC snap track (H: 10mm)



Two-part snap track that can be welded together to join rolls end-to-end or side-to-side to cover large areas. Supplied with cold welding paste. Comes in dark grey. Size: 10.5mm x 2.5m (13/32" x 8'2")